

- 1
- 2
- 3
- 4
- 5
- 6
- 7
- 8
- 9
- 10
- 11
- 12
- 13
- 14
- 15
- 16
- 17
- 18

MATERIAL

Anodised aluminium

COLOUR

Natural, matte finish.

ROTATING PIN

AISI 304 stainless steel.

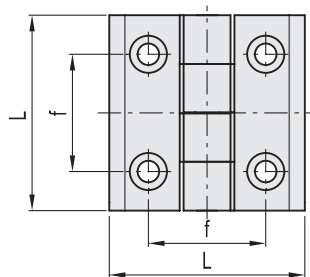
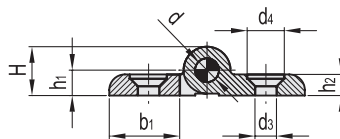
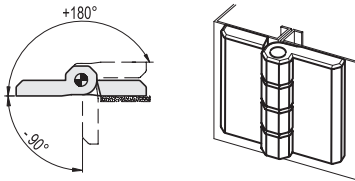
STANDARD EXECUTION

Pass-through holes for countersunk head screws.

ROTATION ANGLE (APPROXIMATE VALUE)

Max 270° (-90° and +180° being 0° the condition where the two inter-connected surfaces are on the same plane).

Do not exceed the rotation angle limit so as not to prejudice the hinge mechanical performance.



| Conversion Table | |
|-------------------|------|
| 1 mm = 0,039 inch | |
| L | |
| mm | inch |
| 40 | 1.57 |
| 50 | 1.97 |
| 60 | 2.36 |

METRIC

| Code | Description | L | d3 | d4 | f | H | h1 | h2 | b1 | d | Δ |
|--------|----------------|----|-----|------|----|------|-----|----|------|---|----|
| 428649 | CMM-AL-40-SH-5 | 40 | 5.5 | 10.5 | 25 | 10.5 | 5.5 | 5 | 14 | 4 | 25 |
| 428651 | CMM-AL-50-SH-5 | 50 | 5.5 | 10.5 | 30 | 12.5 | 6.5 | 6 | 17 | 6 | 50 |
| 428652 | CMM-AL-50-SH-6 | 50 | 6.5 | 12.5 | 30 | 12.5 | 6.5 | 6 | 17 | 6 | 47 |
| 428655 | CMM-AL-60-SH-8 | 60 | 8.5 | 16.5 | 36 | 16.5 | 8.5 | 8 | 20.5 | 8 | 94 |