

**Before you plug  
into your PC you  
must read this!**

Don't plug in your DCA Pro yet.  
You must install the software first!

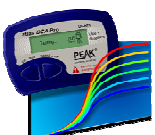
**For Windows XP,**  
please see the 2<sup>nd</sup> page.

**For Windows Vista, 7, 8 and 10**  
please read this page:

## **Vista and Windows 7, 8 and 10 – DON'T PLUG IN JUST YET!**

---

1. Make sure you have the latest Windows Updates and Service Pack.
2. Run "Setup.exe" on the supplied USB flash drive. Alternatively, download and run the file from our website: [www.peakelec.co.uk/downloads/dcaprosetup.exe](http://www.peakelec.co.uk/downloads/dcaprosetup.exe)
3. During the setup process, you may be asked to install .NET Framework 4. The installation files for that are included on the USB stick and don't need to be downloaded. If you're using the downloaded DCA Pro software installation then you may be prompted to additionally download .NET Framework 4. Accept the Microsoft agreement and the process will complete in a few minutes (sometimes up to 10 minutes).
4. Some systems may warn you that the driver is not signed, this is ok and it is fine to accept the warning and proceed. The DCA Pro software itself and the installation file are digitally signed by Peak Electronic Design Ltd.
5. When the DCA Pro software installation is complete, you can plug in your DCA Pro to a convenient USB socket. It's best to choose a socket directly on your computer rather than a hub.
6. Windows should install the drivers automatically although it can take a minute or two. You should see the driver installation activity in the bottom right of your screen.
7. If prompted, let Windows download the latest WinUSB drivers. That can take a few minutes.



8. After a few moments, your DCA Pro should chime and your software is ready to use. Double click the new desktop DCA Pro icon and you should see the "DCA Pro connected" message in the bottom left of the program's window.

## Windows XP – **DON'T PLUG IN JUST YET!**

1. Make sure you have the latest Windows Updates and Service Pack 3.
2. Run "Setup.exe" on the supplied USB flash drive. Alternatively, download and run the file from our website: [www.peakelec.co.uk/downloads/dcaprosetup.exe](http://www.peakelec.co.uk/downloads/dcaprosetup.exe)
3. During the setup process, you may be asked to install .NET Framework 4. The installation files for that are included on the USB stick and don't need to be downloaded. If you're using the downloaded DCA Pro software installation then you may be prompted to additionally download .NET Framework 4. Accept the Microsoft agreement and the process will complete in a few minutes (sometimes up to 10 minutes).
4. When the DCA Pro software installation is complete, you can plug in your DCA Pro to a convenient USB socket. It's best to choose a socket directly on your computer rather than a hub.

5. You should be presented with the following window:

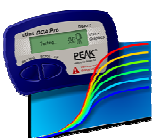
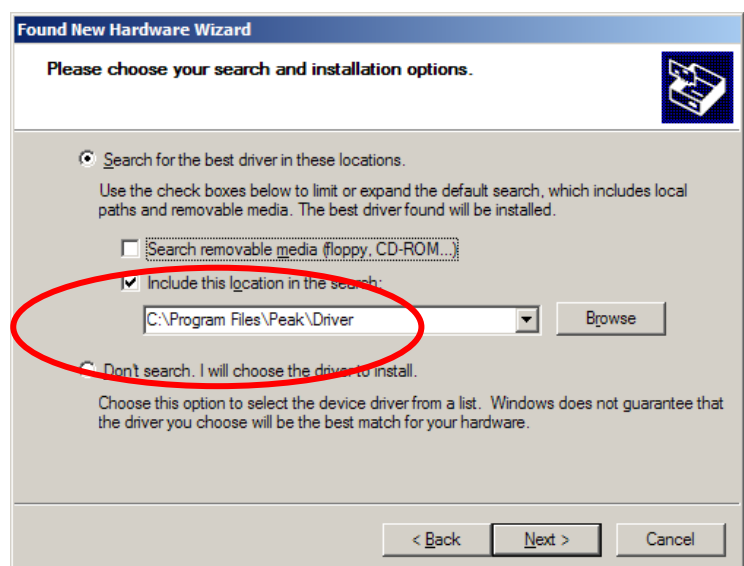
Make sure you select "Install from a list or specific location" and then click Next.



6. You will then be presented with the following window:

Make sure the box "Include this location in the search" is checked.

It should already be filled with the location for the Peak Driver. Then click Next.



7. After a few moments, your DCA Pro should chime and your software is ready to use. Double click the new desktop DCA Pro icon and you should see the "DCA Pro connected" message in the bottom left of the program's window.