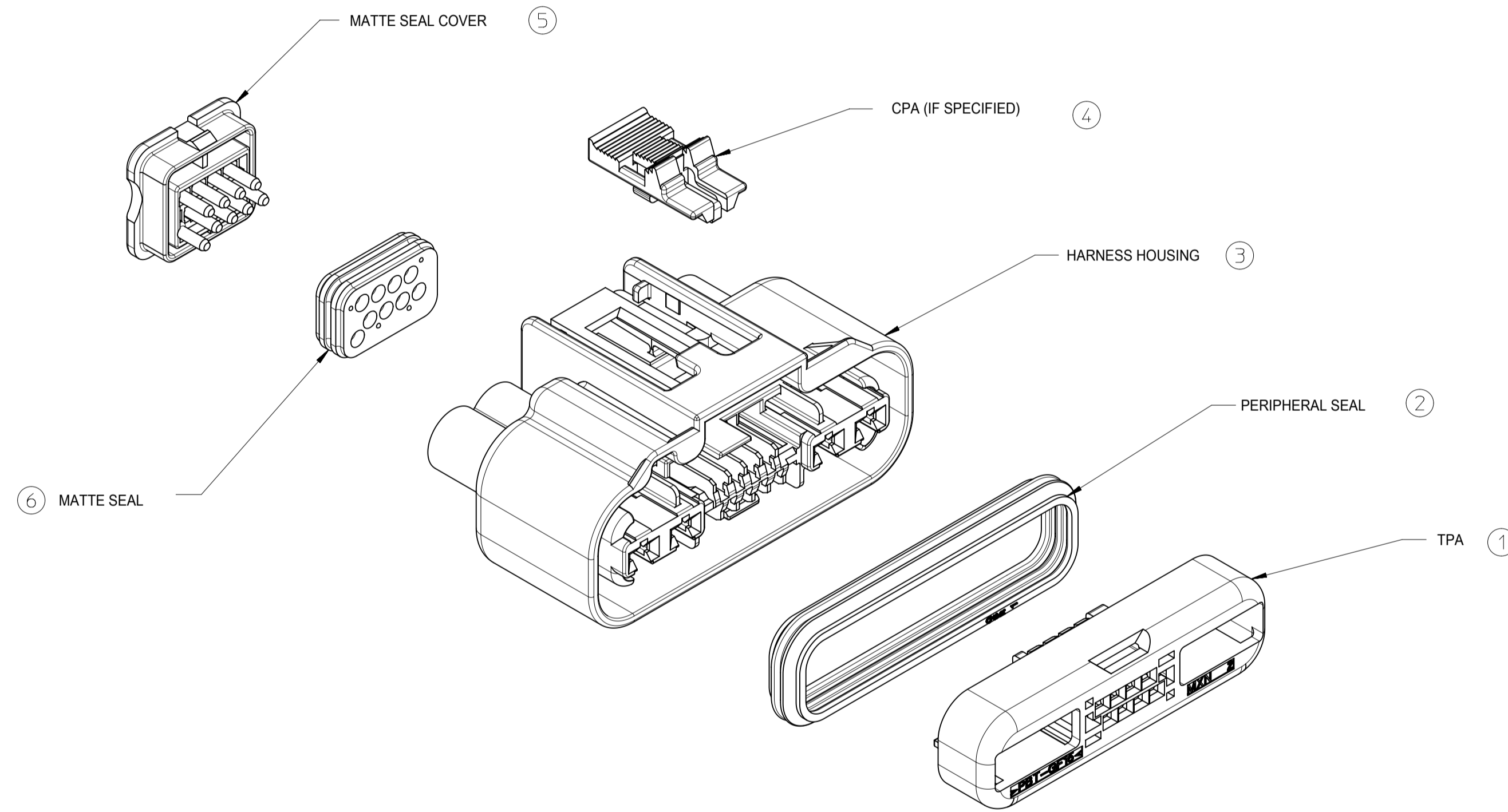
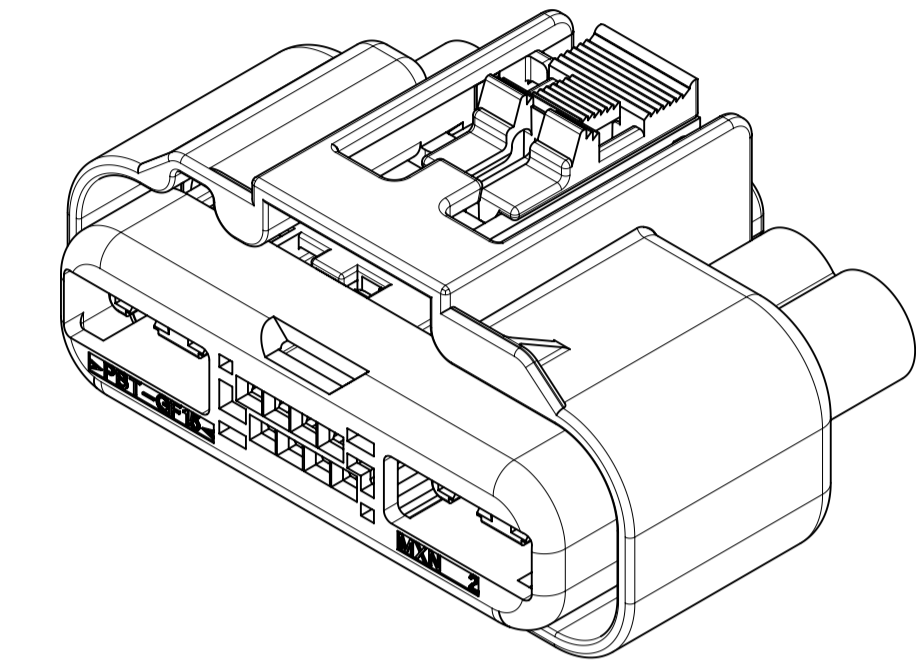


TABLE OF CONTENTS	
SHEET NO.	SHEET DESCRIPTION
1	NOTES
2	FIN ASSEMBLY
3	BOM
4	HEADER HOUSING DIMENSION
5	HEADER ASSEMBLY DIMENSION



- NOTE:
- CONNECTOR TO BE SHIPPED WITH TPA IN PRE-LOAD POSITION AS SHOWN IN SECTION A-A.
  - DATE CODE DESCRIPTION:  
 -1st DIGIT: LAST DIGIT OF CALENDAR YEAR, (EXAMPLE: 2000 = "0")  
 -2nd THROUGH 4th DIGIT: "DAY#" OF THE CALENDAR YEAR, (EXAMPLE: FEB. 3rd = "034")  
 SERIAL NUMBER DESCRIPTION:  
 -STARTS AT "00001" AND IS RESET FOR EACH NEW "DAY#".  
 PART NUMBER:  
 -SEE TABLE ON SHEET 3.
  - ALL DIMENSIONS SHOWN ARE FUNCTIONAL. DIMENSIONS NOT SHOWN CAN BE OBTAINED FROM THE ASSOCIATED MODEL.
  - TEST SUMMARY DOCUMENT: 310340001
  - TERMINAL TO BE USED FOR THIS SYSTEM, SEE TERMINAL TABLE ON SHEET 3

ITEM NO	DESCRIPTION	MATERIAL	COLOR
6	MATTE SEAL	SILICONE RUBBER	DARK BLUE
5	MATTE SEAL COVER	PBT GF15	BLACK
4	CPA	PPE/PA GF10	NATURAL
3	HARNESS HOUSING	SPS GF30	BLACK
2	PERIPHERAL SEAL	SILICONE RUBBER	LT. BLUE
1	TPA	PBT GF15	NATURAL

D	ADD 31034-6025	ER 608393
C	ADD 31034-5021	ER 602910
B	ADD 31034-6024	10889293
A1	UPDATE DRAWING ON SHEET 5	10868575
A	INITIAL RELEASE	10859355
REV	REV DESCRIPTION	ECN SAP#

QUALITY SYMBOLS		THIS DRAWING CONTAINS INFORMATION THAT IS PROPRIETARY TO MOLEX ELECTRONIC TECHNOLOGIES, LLC AND SHOULD NOT BE USED WITHOUT WRITTEN PERMISSION		DIMENSION UNITS		SCALE		
FA = 0	2018/12/04	GENERAL TOLERANCES (UNLESS SPECIFIED)	mm	1:1	DRWN BY	DATE		
FE = 0	2018/12/07	ANGULAR TOL ± 0.5 °	PXU25	2017/08/09	CHK'D BY	DATE		
FF = 0	2018/12/07	4 PLACES ±	GLI04	2017/09/05	APPR BY	DATE		
FG = 0	608393	3 PLACES ±	JDENG02	2017/09/19	DRAWING SIZE	THIRD ANGLE PROJECTION		
FD = 0	DRWN: HKLIANG	2 PLACES ± 0.13	A1		SERIES	MATERIAL NUMBER		CUSTOMER
FC = 0	CHKD: JDENG02	1 PLACE ± 0.25	31034	SEE CHART	DOCUMENT NUMBER	DOC TYPE	DOC PART	SHEET NUMBER
FB = 0	REV: APPR: JDENG02	0 PLACES ±	SD-31034-001	PSD	001	001	1 OF 5	
FA = 0		DRAFT WHERE APPLICABLE MUST REMAIN WITHIN DIMENSIONS						

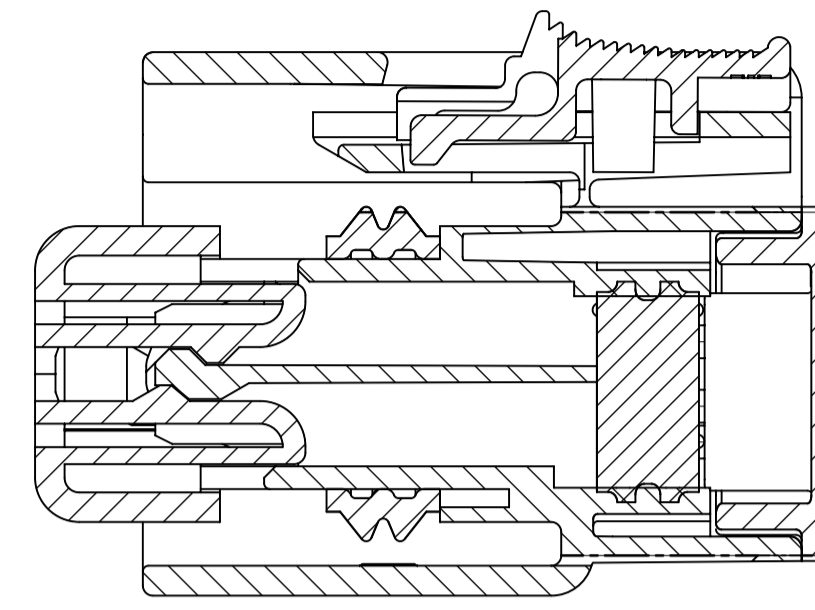
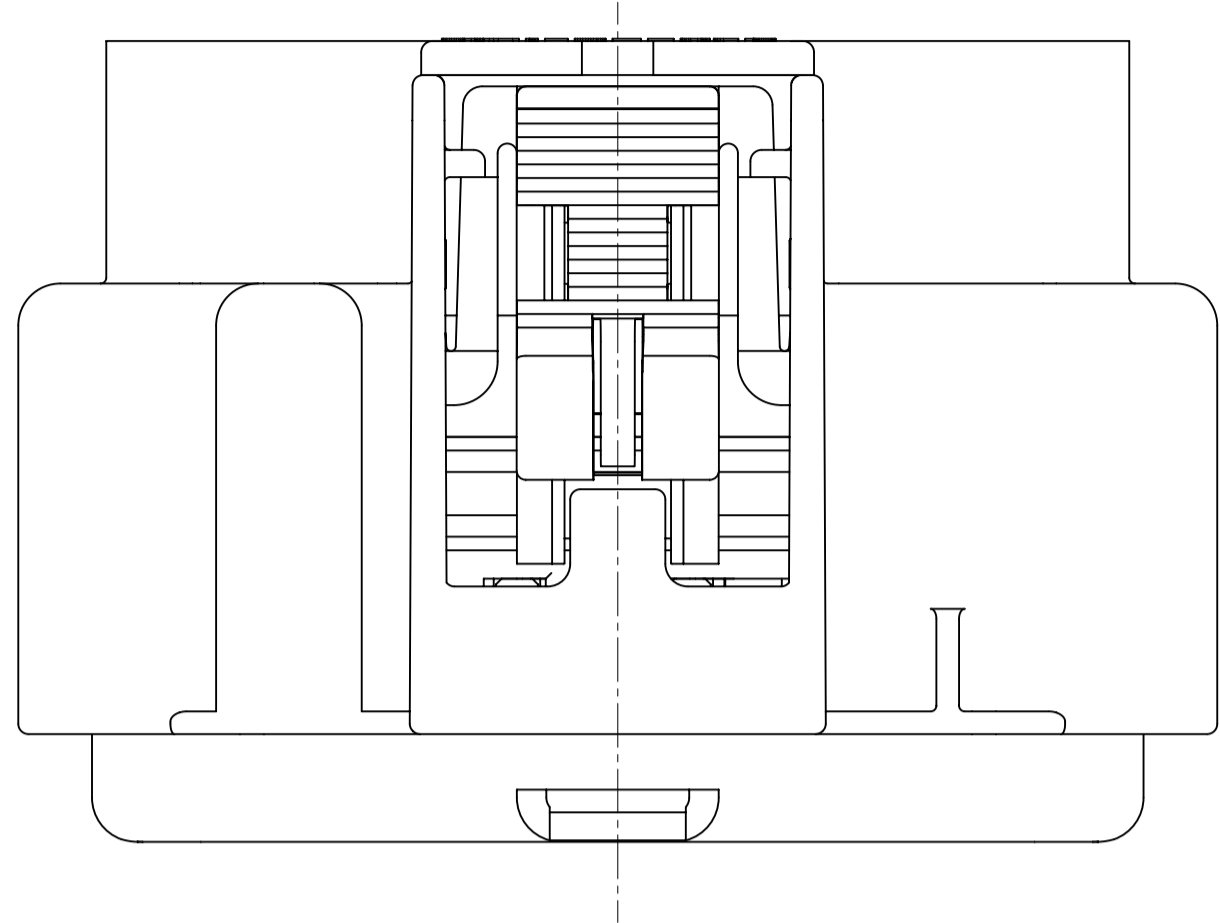
12 WAY HYBRID HARNESS CONNECTOR ASSEMBLY ISO WIRE

PRODUCT CUSTOMER DRAWING

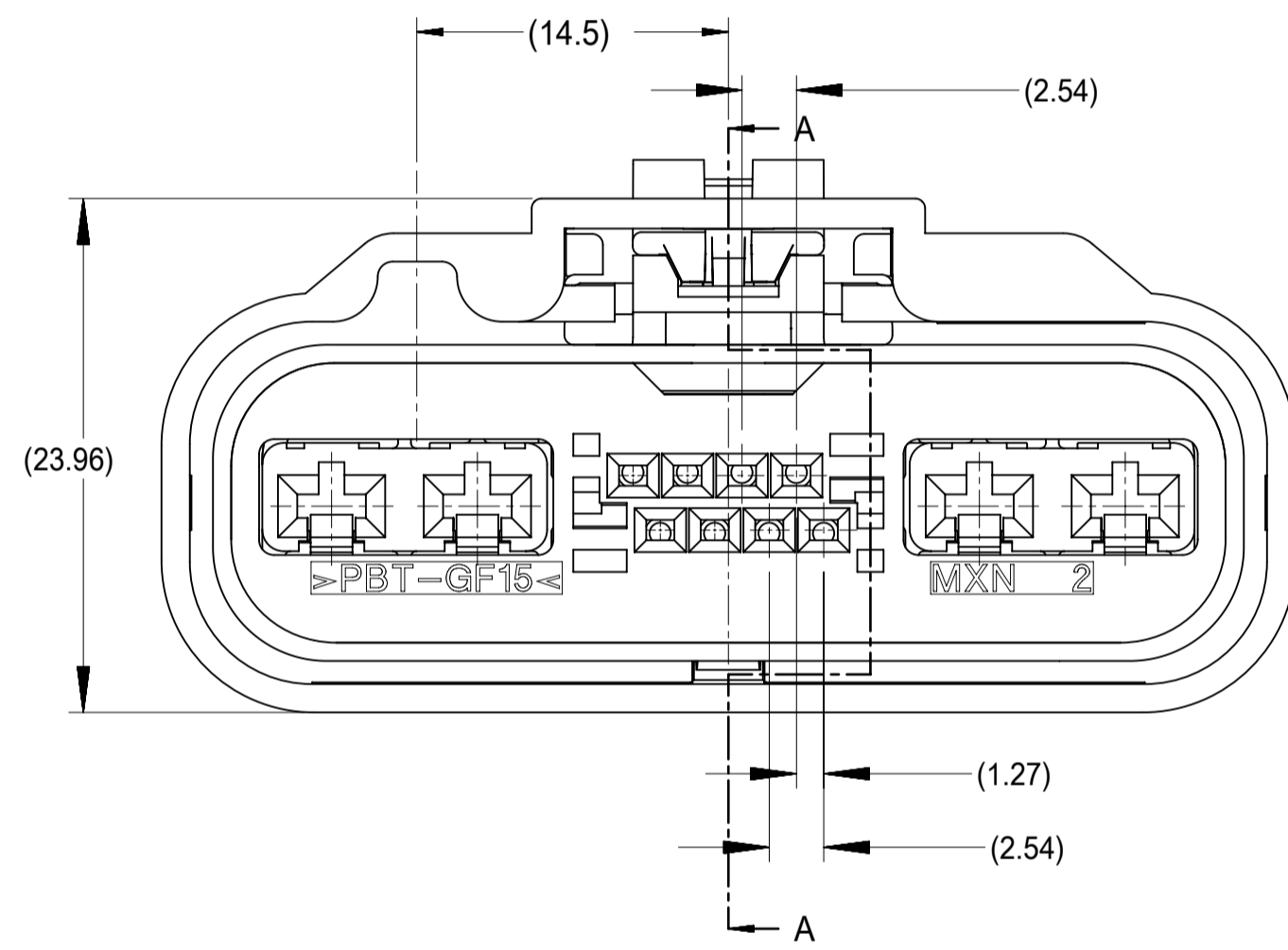
SERIES MATERIAL NUMBER CUSTOMER

31034 SEE CHART

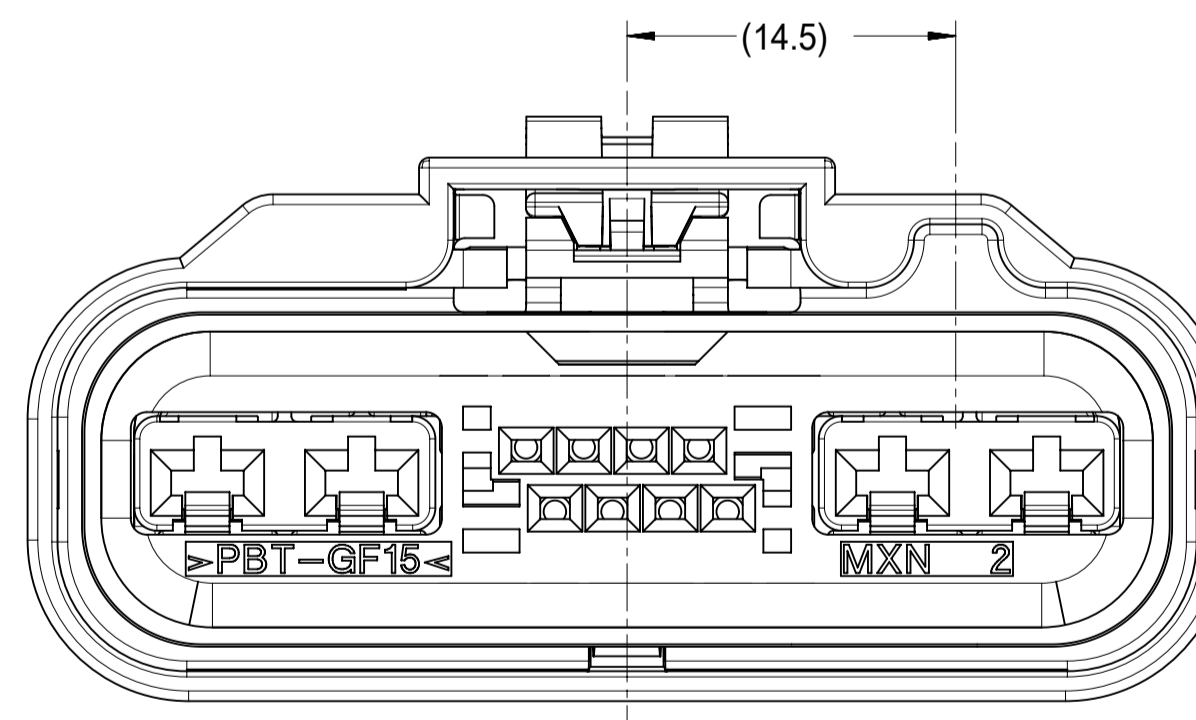
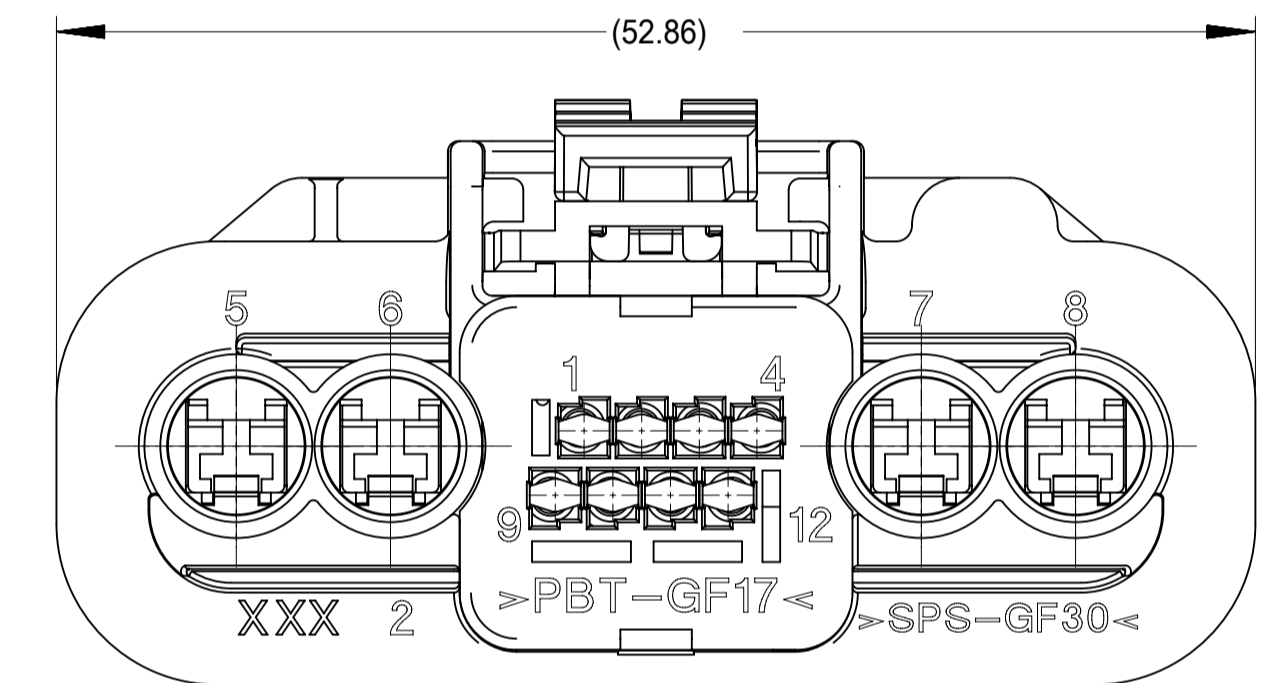
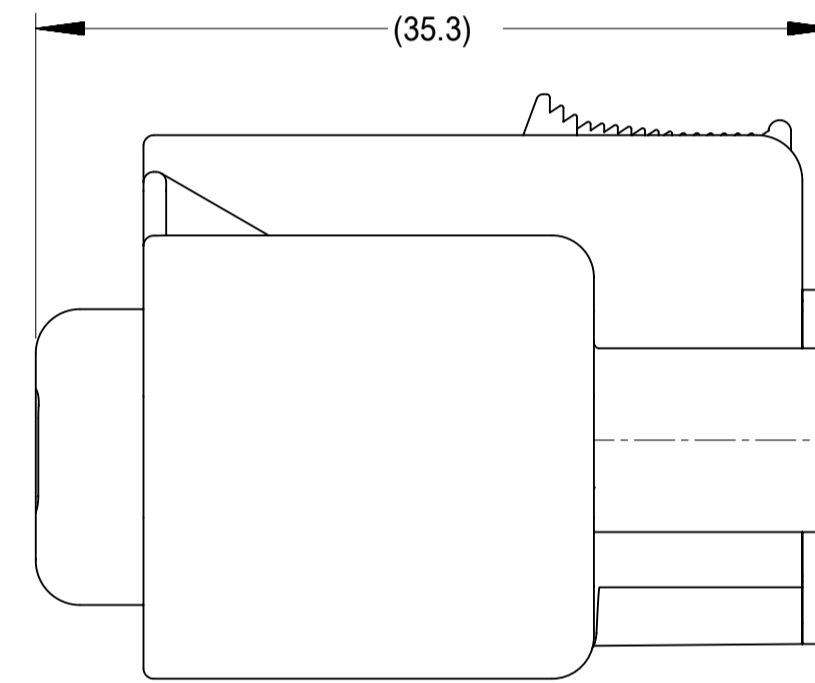
DOCUMENT NUMBER SD-31034-001 DOC TYPE PSD DOC PART 001 SHEET NUMBER 1 OF 5



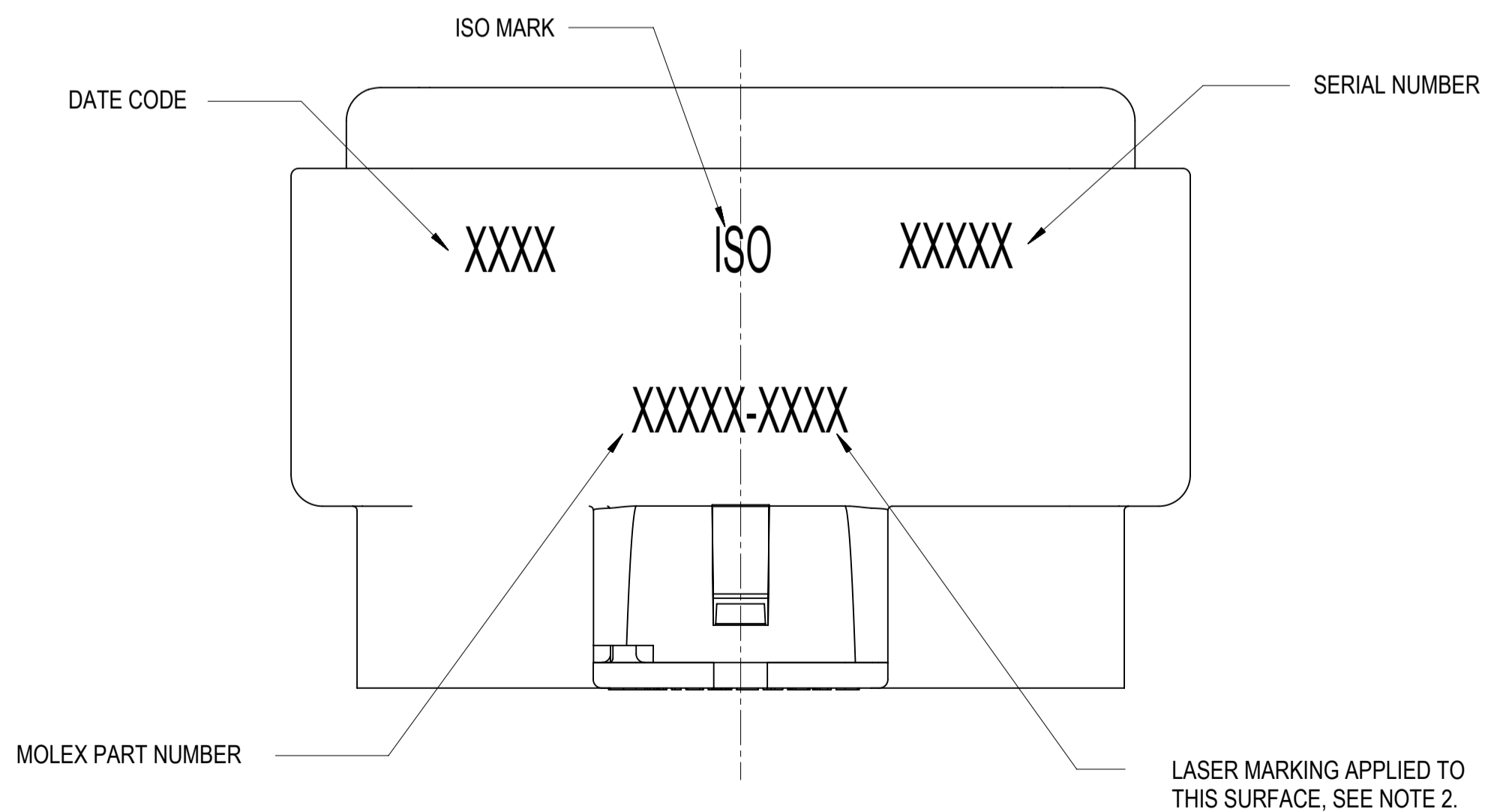
SECTION A-A



POLARIZATION A



POLARIZATION B



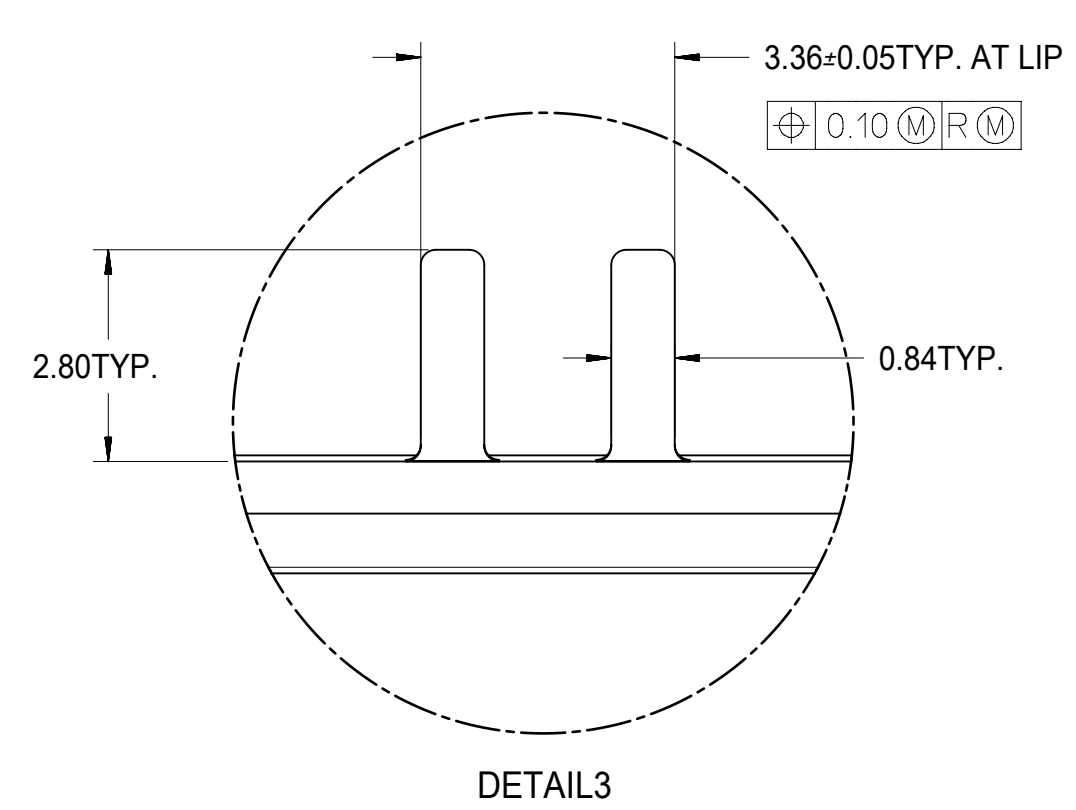
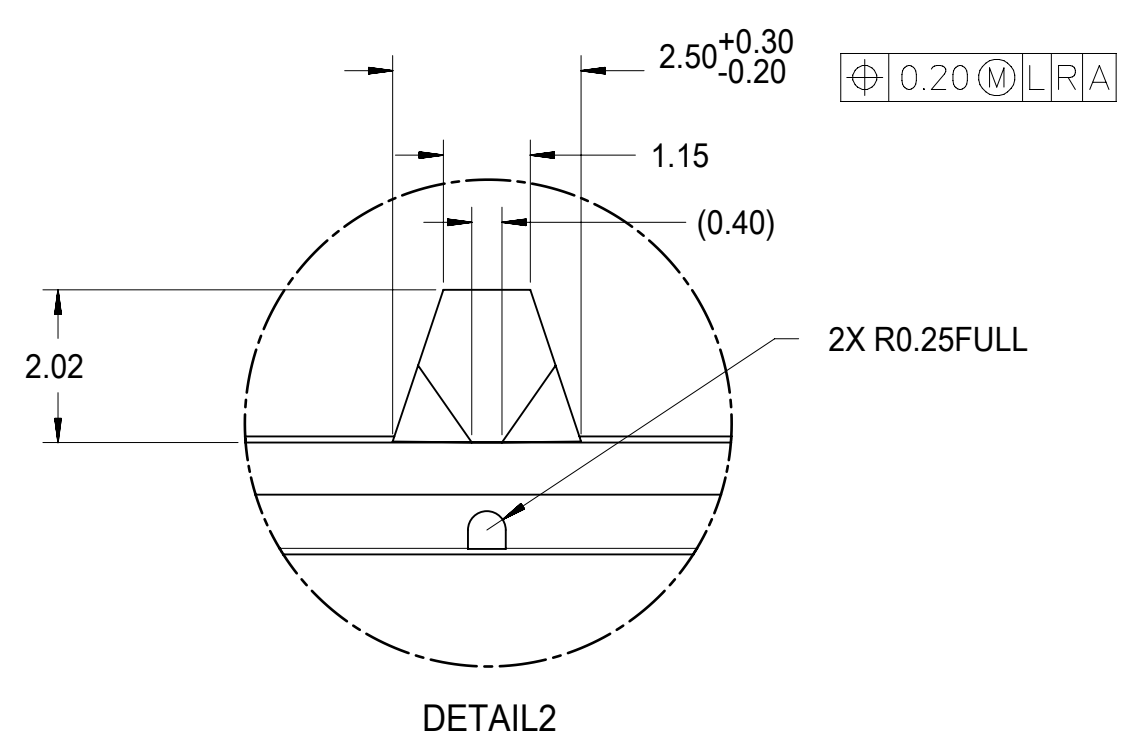
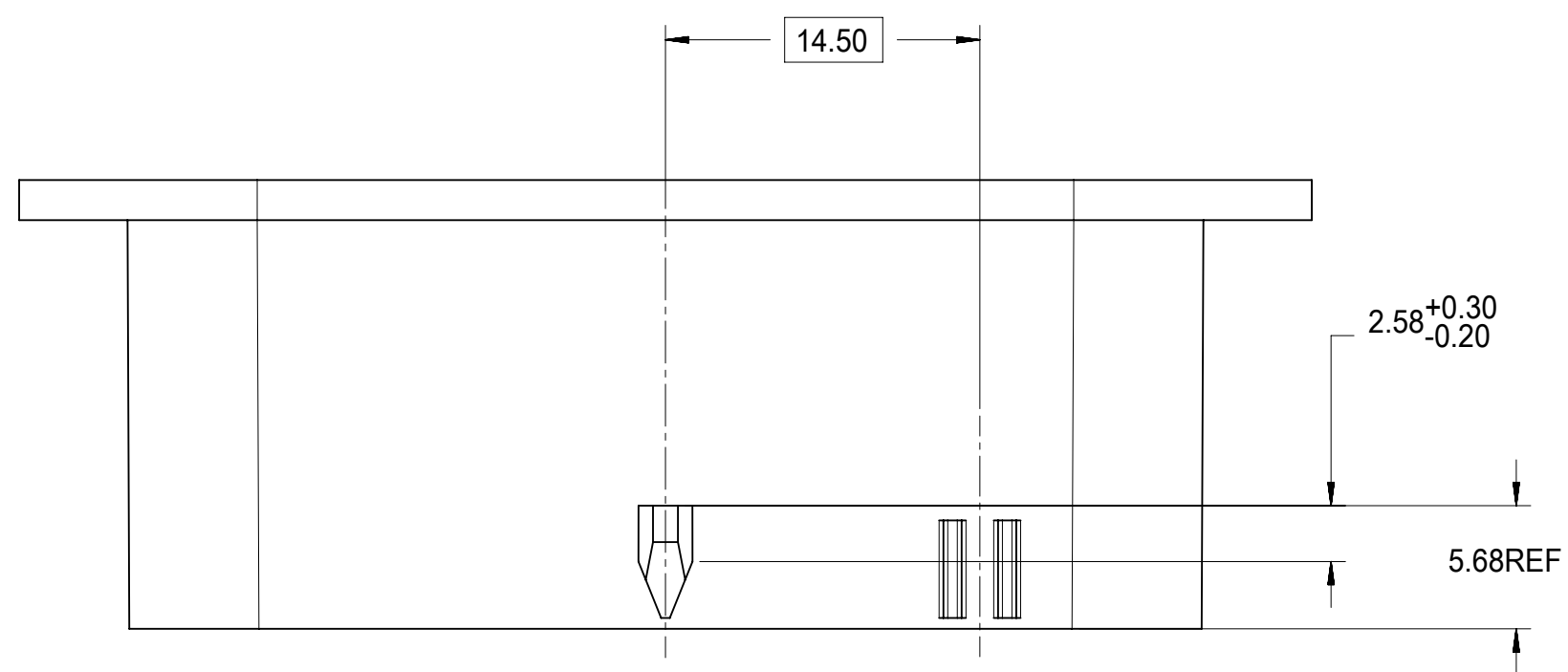
<b>QUALITY SYMBOLS</b> FA = 0 FE = 0 FE = 0 ▼ = 0 C = 0 ☒ = 0 ■ = 0 ∇ = 0	THIS DRAWING CONTAINS INFORMATION THAT IS PROPRIETARY TO MOLEX ELECTRONIC TECHNOLOGIES, LLC AND SHOULD NOT BE USED WITHOUT WRITTEN PERMISSION			
	EC NO: 608393 DRWN: HKLIANG CHKD: JDENG02 REV: APPR: JDENG02	2018/12/04 2018/12/07 2018/12/07	GENERAL TOLERANCES (UNLESS SPECIFIED) ANGULAR TOL ± 0.5 ° 4 PLACES ± 3 PLACES ± 2 PLACES ± 0.13 1 PLACE ± 0.25 0 PLACES ± DRAFT WHERE APPLICABLE MUST REMAIN WITHIN DIMENSIONS	DIMENSION UNITS: mm SCALE: 1:1 DRWN BY: PXU25 DATE: 2017/08/09 CHK'D BY: GLI04 DATE: 2017/09/05 APPR BY: JDENG02 DATE: 2017/09/19 DRAWING SIZE: A1 THIRD ANGLE PROJECTION
12 WAY HYBRID HARNESS CONNECTOR ASSEMBLY ISO WIRE				PRODUCT CUSTOMER DRAWING
SERIES: 31034		MATERIAL NUMBER: SEE CHART		CUSTOMER:
DOCUMENT NUMBER: SD-31034-001		DOC TYPE: PSD	DOC PART: 001	SHEET NUMBER: 2 OF 5

MOLEX ASSEMBLY NUMBER	CONNECTOR W/ CPA OPTION	HARNESS HOUSING NUMBER	POLARIZATION	MATTE SEAL COVER NUMBER	PLUGGED TERMINAL CAVITY LOCATIONS								TOTAL NUMBER OF PLUGGED CAVITIES	
31034-5000	NO	31035-1000	A	31037-1000										0
31034-5001	NO	31035-1000	A	31037-1001	1	2	3	4	9	10	11	12		8
31034-5002	NO	31035-1000	A	31037-1002		2	3							2
31034-5003	NO	31035-1000	A	31037-1003		2								1
31034-5004	NO	31035-1000	A	31037-1004				4						1
31034-5005	NO	31035-1000	A	31037-1005		2	4							2
31034-5006	NO	31035-1000	A	31037-1006		2	3	4						3
31034-6000	YES	31035-1000	A	31037-1000										0
31034-6001	YES	31035-1000	A	31037-1001	1	2	3	4	9	10	11	12		8
31034-6002	YES	31035-1000	A	31037-1002		2	3							2
31034-6003	YES	31035-1000	A	31037-1003		2								1
31034-6004	YES	31035-1000	A	31037-1004				4						1
31034-6005	YES	31035-1000	A	31037-1005		2	4							2
31034-6006	YES	31035-1000	A	31037-1006		2	3	4						3
31034-6010	YES	31035-1000	A	31037-1009			3	4						2
31034-6007	YES	31035-1001	B	31037-1000										0
31034-5007	NO	31035-1001	B	31037-1000										0
31034-6008	YES	31035-1001	B	31037-1007		2			9	10				3
31034-6009	YES	31035-1001	B	31037-1008		2			9	10	11	12		5
31034-6011	YES	31035-1001	B	31037-1010		2			9	10	11			4
31034-6012	YES	31035-1001	B	31037-1011		2			9					2
31034-6013	YES	31035-1001	B	31037-1012		2			9		11	12		4
31034-6014	YES	31035-1001	B	31037-1013		2	3		9	10	11	12		6
31034-6015	YES	31035-1001	B	31037-1014		2				10	11			3
31034-5016	NO	31035-1000	A	31037-1015		2	3		9					3
31034-5017	NO	31035-1000	A	31037-1016				4		10	11			3
31034-6016	YES	31035-1001	B	31037-1017		2	3		9	10				4
31034-6017	YES	31035-1001	B	31037-1015		2	3		9					3
31034-6018	YES	31035-1001	B	31037-1018		2	3		9		11	12		5
31034-5018	NO	31035-1000	A	31037-1017		2	3		9	10				4
31034-5019	NO	31035-1000	A	31037-1019		2	3		9	10	12			5
31034-6019	YES	31035-1000	A	31037-1015		2	3		9					3
31034-6020	YES	31035-1000	A	31037-1017		2	3		9	10				4
31034-6021	YES	31035-1000	A	31037-1018		2	3		9		11	12		5
31034-6022	YES	31035-1000	A	31037-1013		2	3		9	10	11	12		6
31034-6024	YES	31035-1000	A	31037-1020		2	3		9	10	11			5
31034-5021	NO	31035-1000	A	31037-1013		2	3		9	10	11	12		6
31034-6025	YES	31035-1001	B	31037-1002		2	3							2

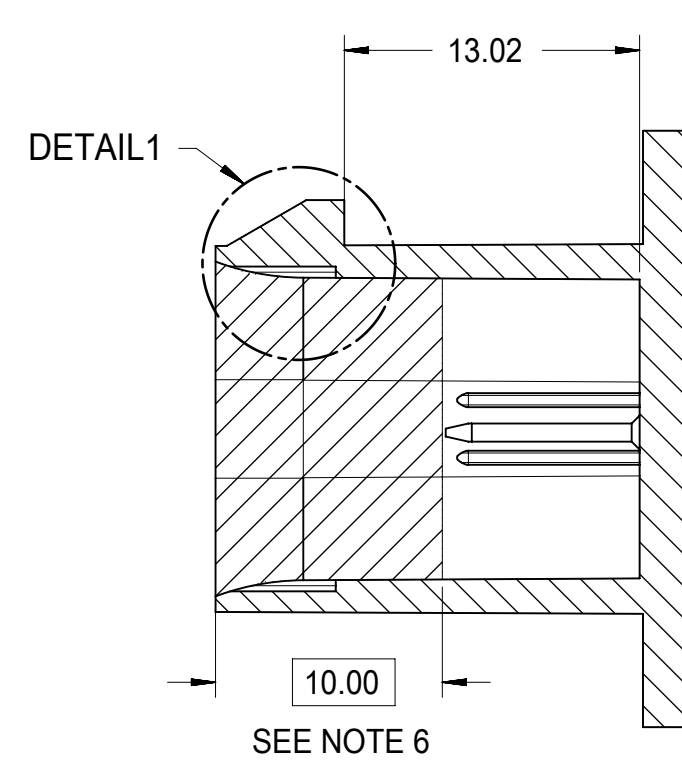
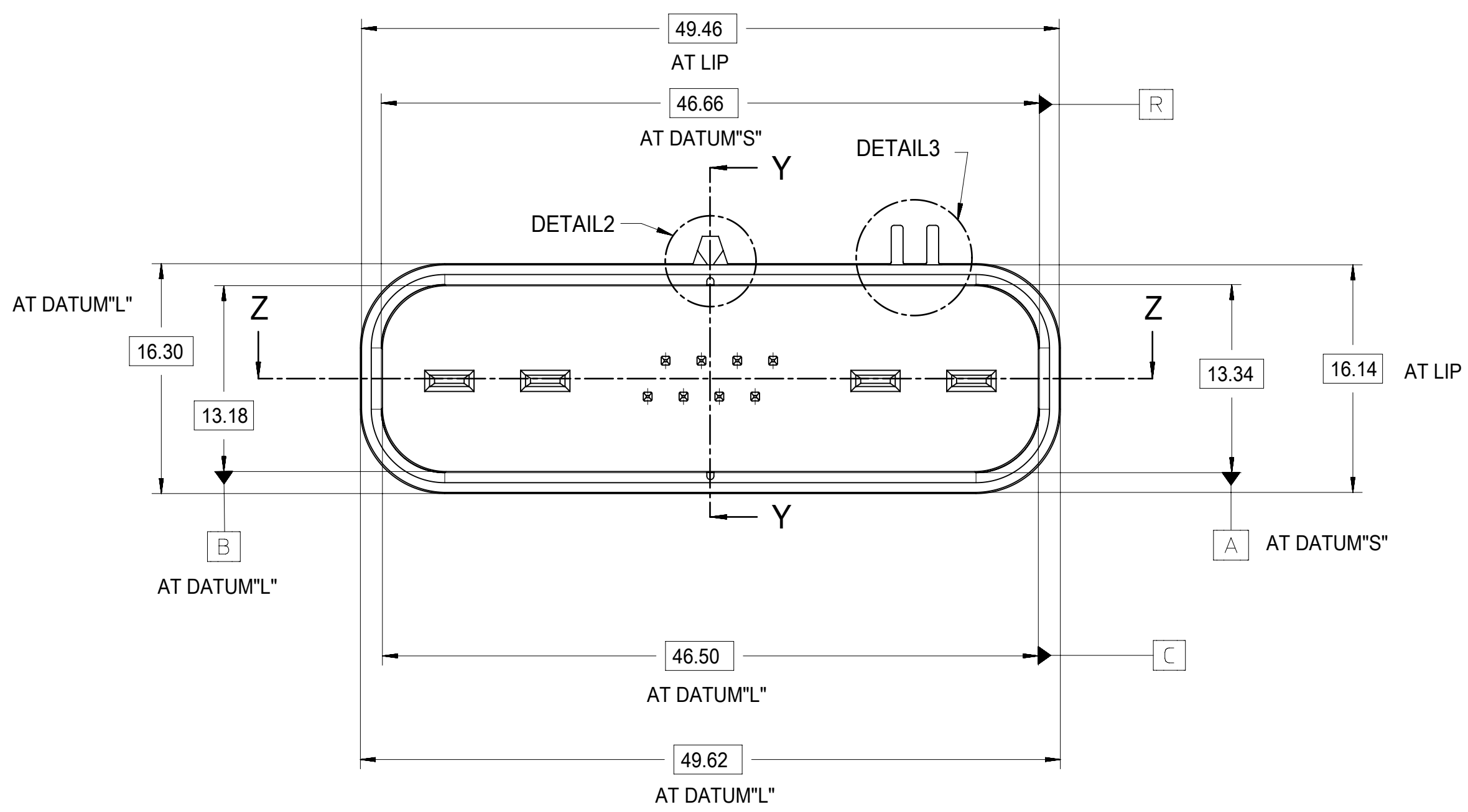
ⓓ

TERMINAL TABLE				
DESCRIPTION	NORMINAL TERMINAL SIZE	PART NUMBER	WIRE SIZE	INSULATION DIAMETER RANGE
TE-RECEPTACLE	0.64 (SN)	1393367-1	22AWG 0.35MM <sup>2</sup>	1.2-1.65MM
TE-RECEPTACLE	0.64 (SN)	1393366-1	18-20AWG 0.75-0.5MM <sup>2</sup>	1.4-2.06MM
TE-RECEPTACLE	2.80 (SN)	1326032-6	12AWG	3.1-3.3MM
TE-RECEPTACLE	2.80 (SN)	1326032-5	14AWG	2.1-3.0MM
TE-RECEPTACLE	2.80 (SN)	1326032-4	16AWG	1.8-2.3MM
TE-RECEPTACLE	2.80 (SN)	1326032-3	18AWG	1.8-2.3MM
TE-RECEPTACLE	2.80 (SN)	1326032-2	20AWG	1.2-1.9MM
TE-RECEPTACLE	2.80 (SN)	1326032-1	22AWG	1.2-1.9MM

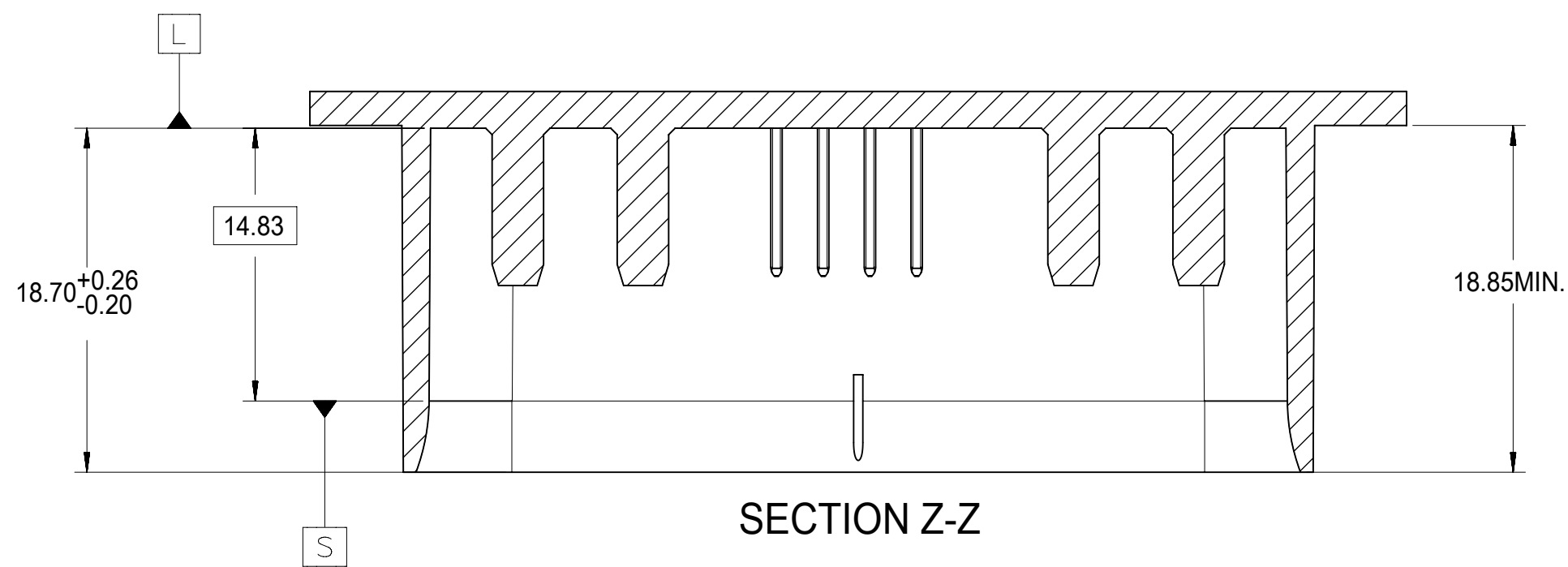
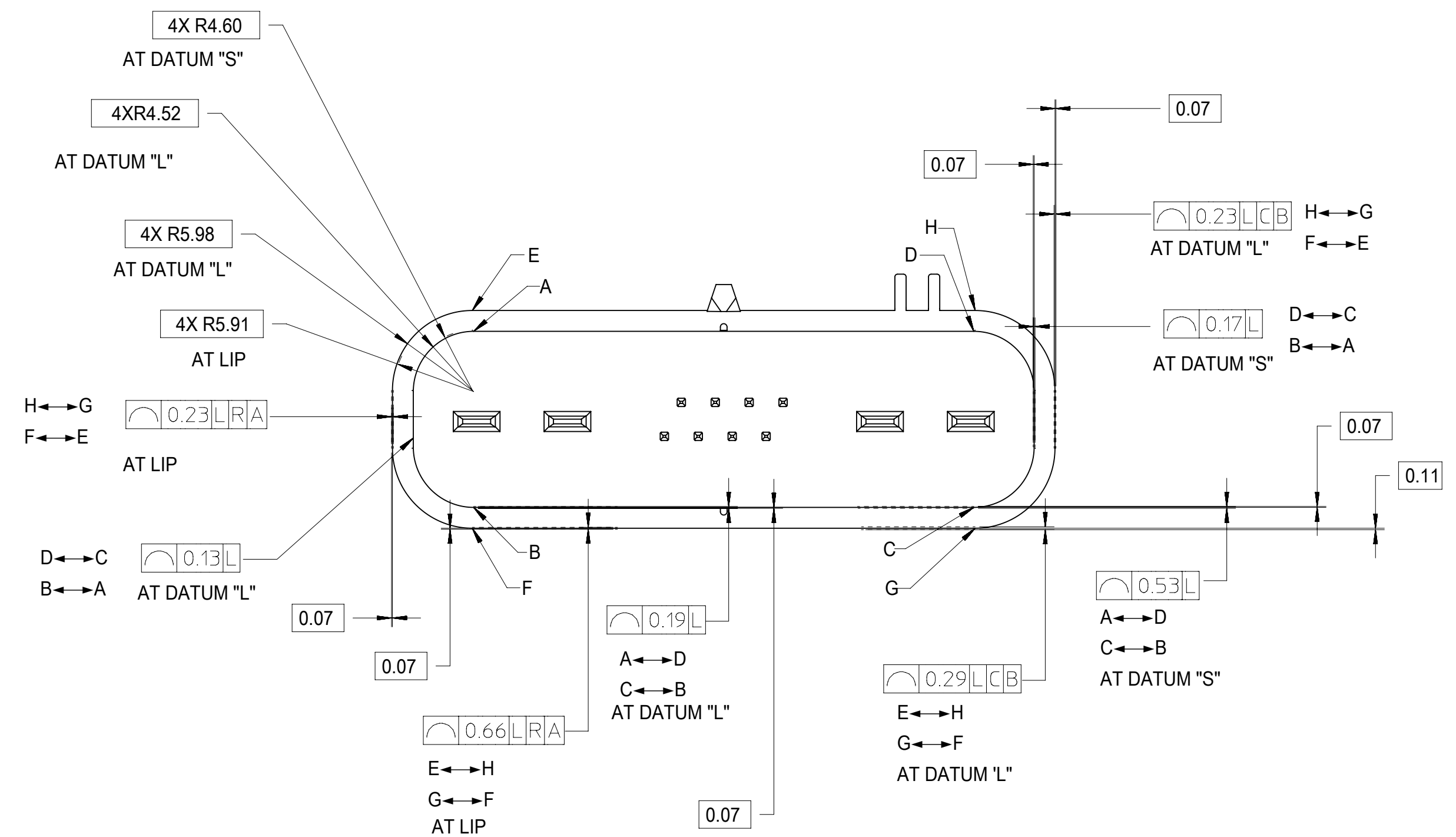
<b>QUALITY SYMBOLS</b> 	THIS DRAWING CONTAINS INFORMATION THAT IS PROPRIETARY TO MOLEX ELECTRONIC TECHNOLOGIES, LLC AND SHOULD NOT BE USED WITHOUT WRITTEN PERMISSION										
	EC NO: 608393 DRWN: HKLIANG CHKD: JDENG02 REV APPR: JDENG02	2018/12/04	GENERAL TOLERANCES (UNLESS SPECIFIED)		DIMENSION UNITS	SCALE					
		2018/12/07	ANGULAR TOL ± 0.5 °		mm	1:1					
	PXU25		DATE		2017/08/09		12 WAY HYBRID HARNESS CONNECTOR ASSEMBLY ISO WIRE				
	GLI04		DATE		2017/09/05						
	JDENG02		DATE		2017/09/19		PRODUCT CUSTOMER DRAWING				
	DRAWING SIZE		THIRD ANGLE PROJECTION		A1						
	DRAFT WHERE APPLICABLE MUST REMAIN WITHIN DIMENSIONS		A1				SERIES	MATERIAL NUMBER	CUSTOMER		
	D		31034		SEE CHART		DOCUMENT NUMBER		DOC TYPE	DOC PART	SHEET NUMBER
			SD-31034-001		PSD		001		3 OF 5		



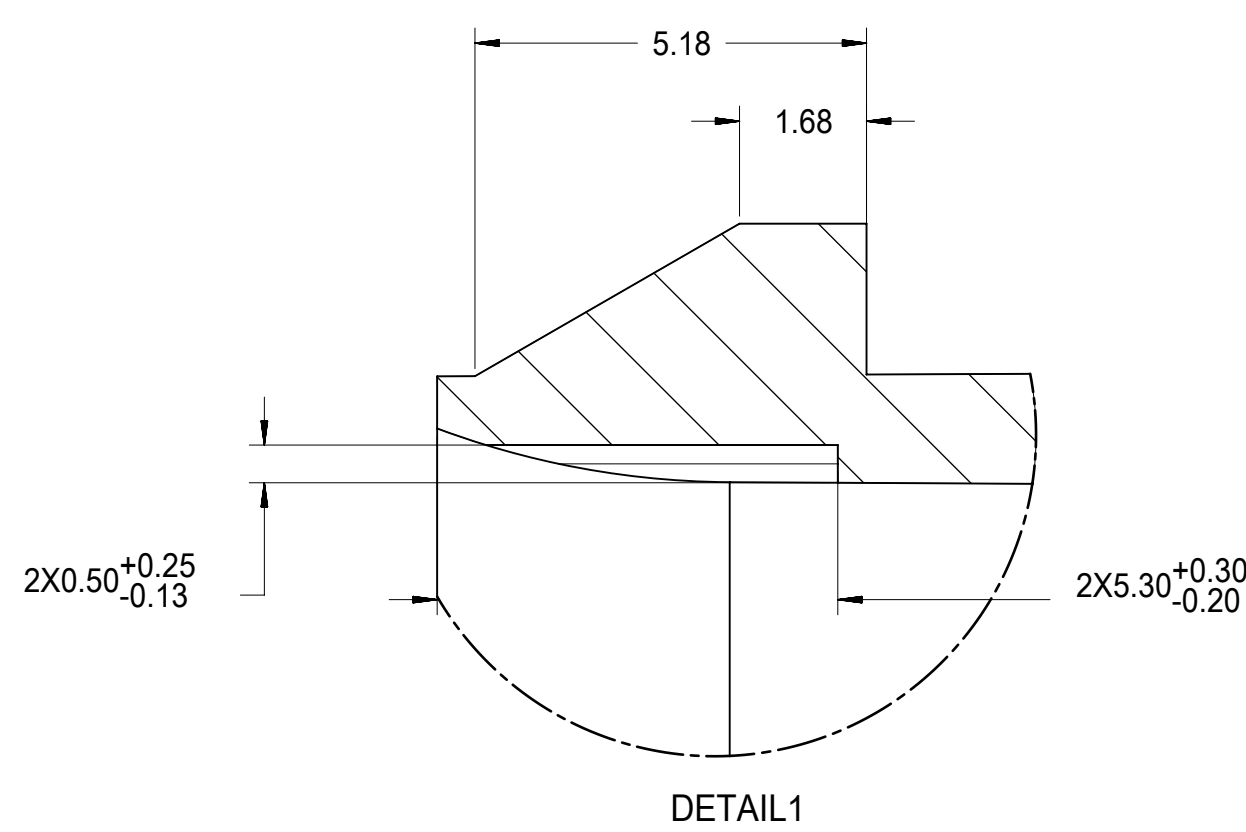
POLARIZATION A



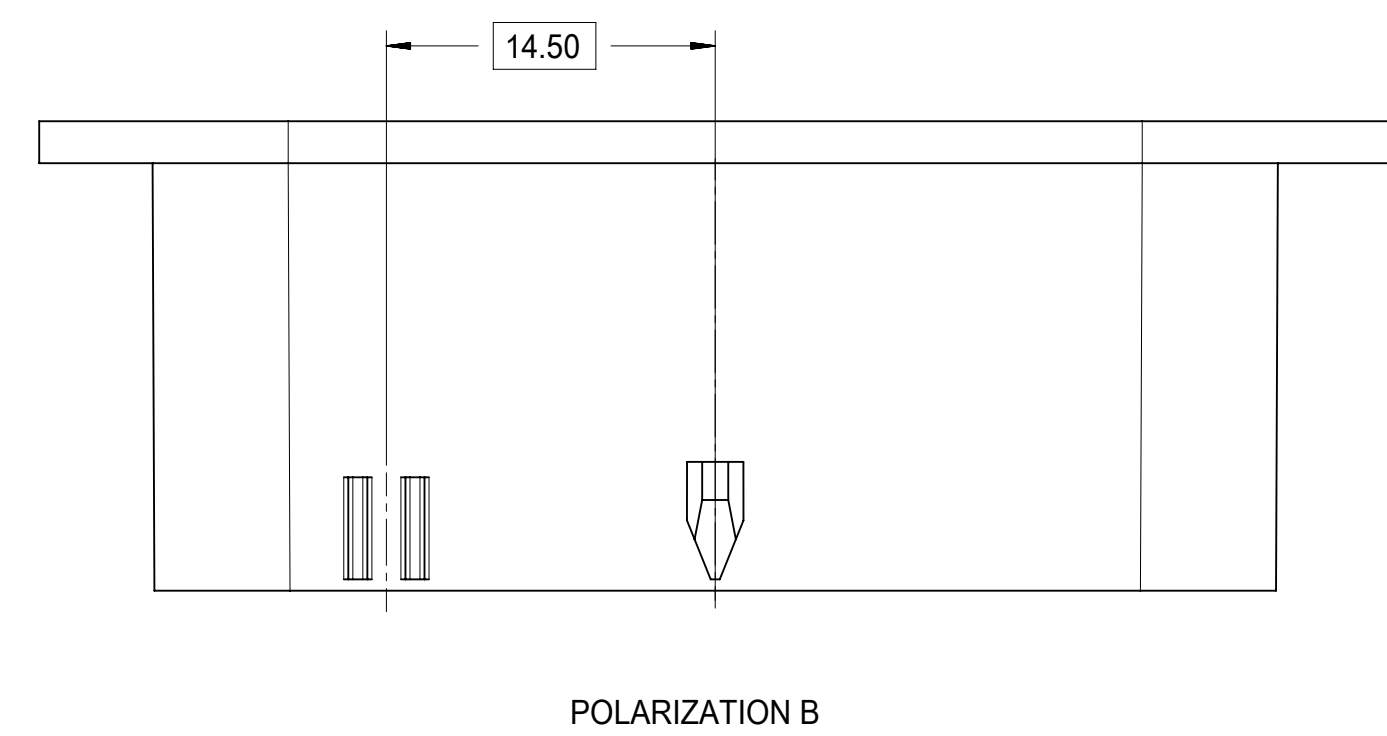
SECTION Y-Y



SECTION Z-Z



DETAIL1

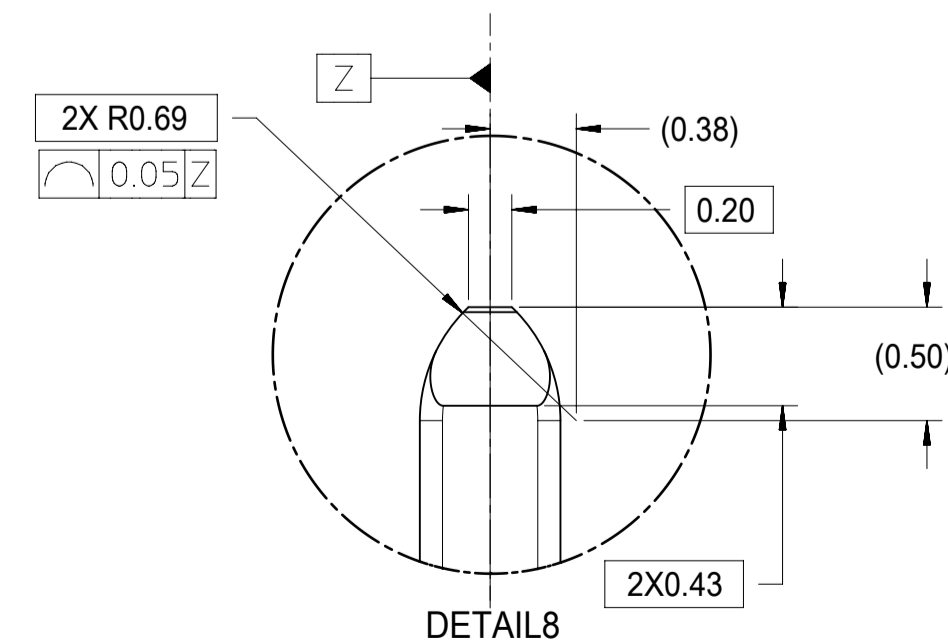
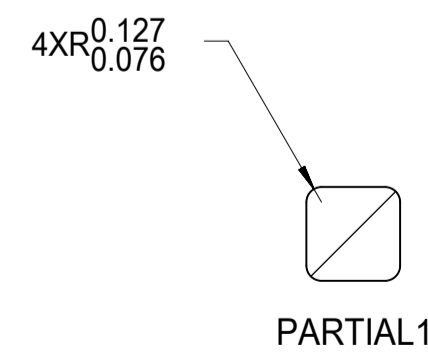
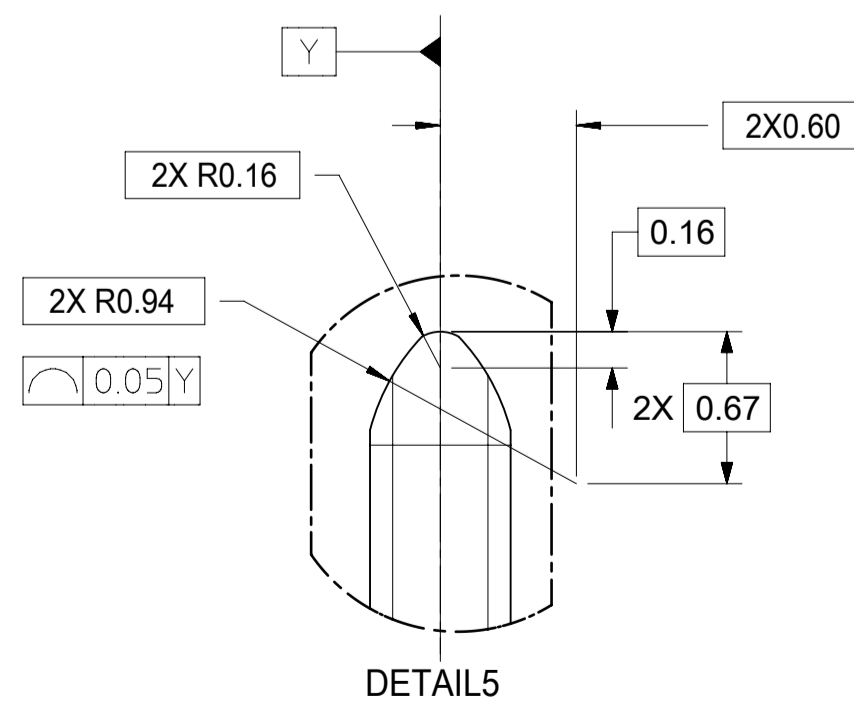
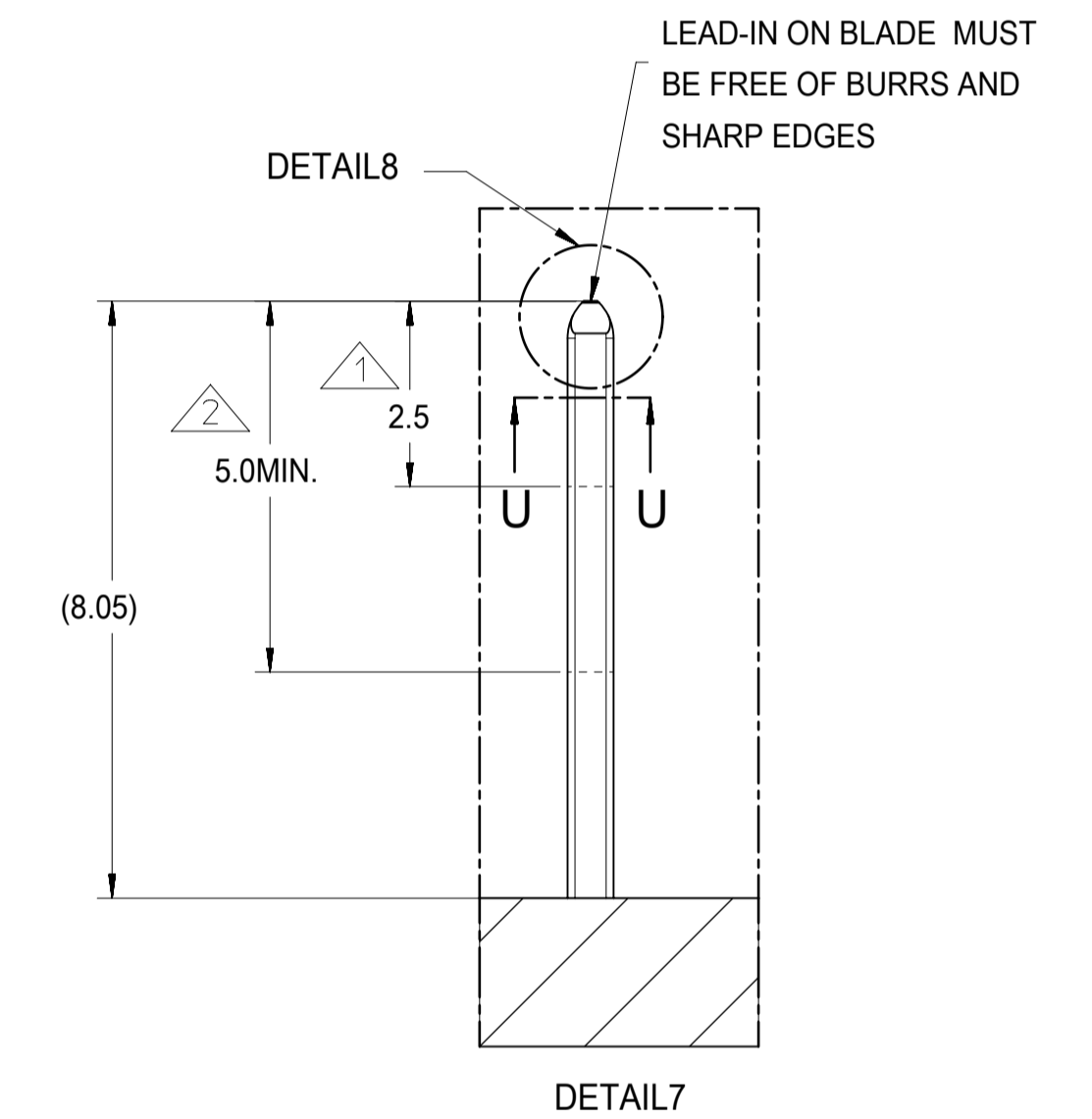
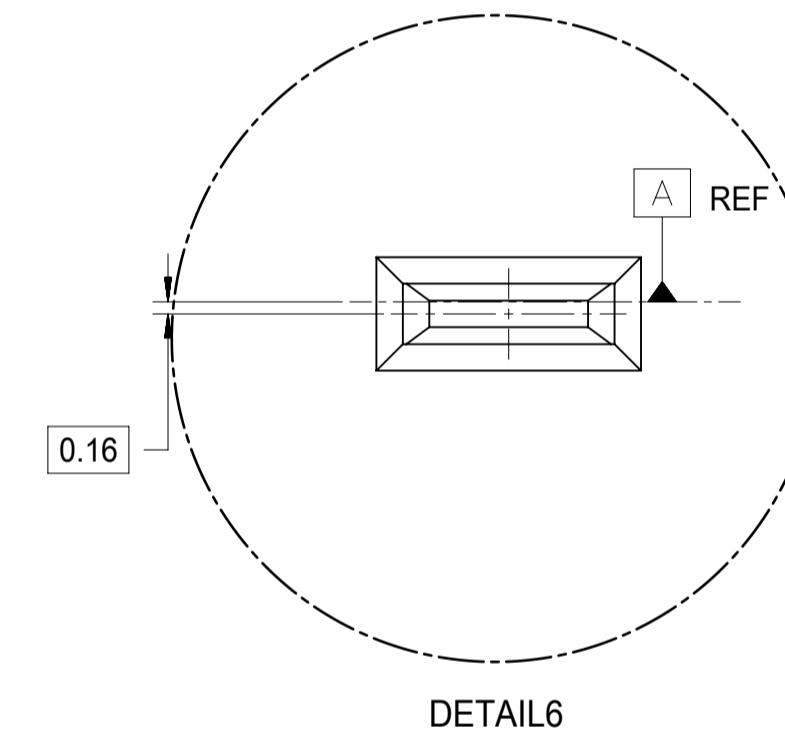
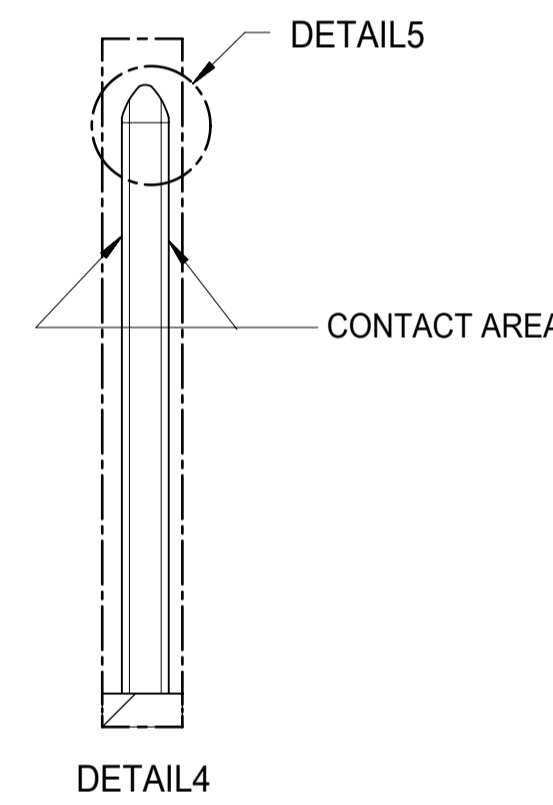
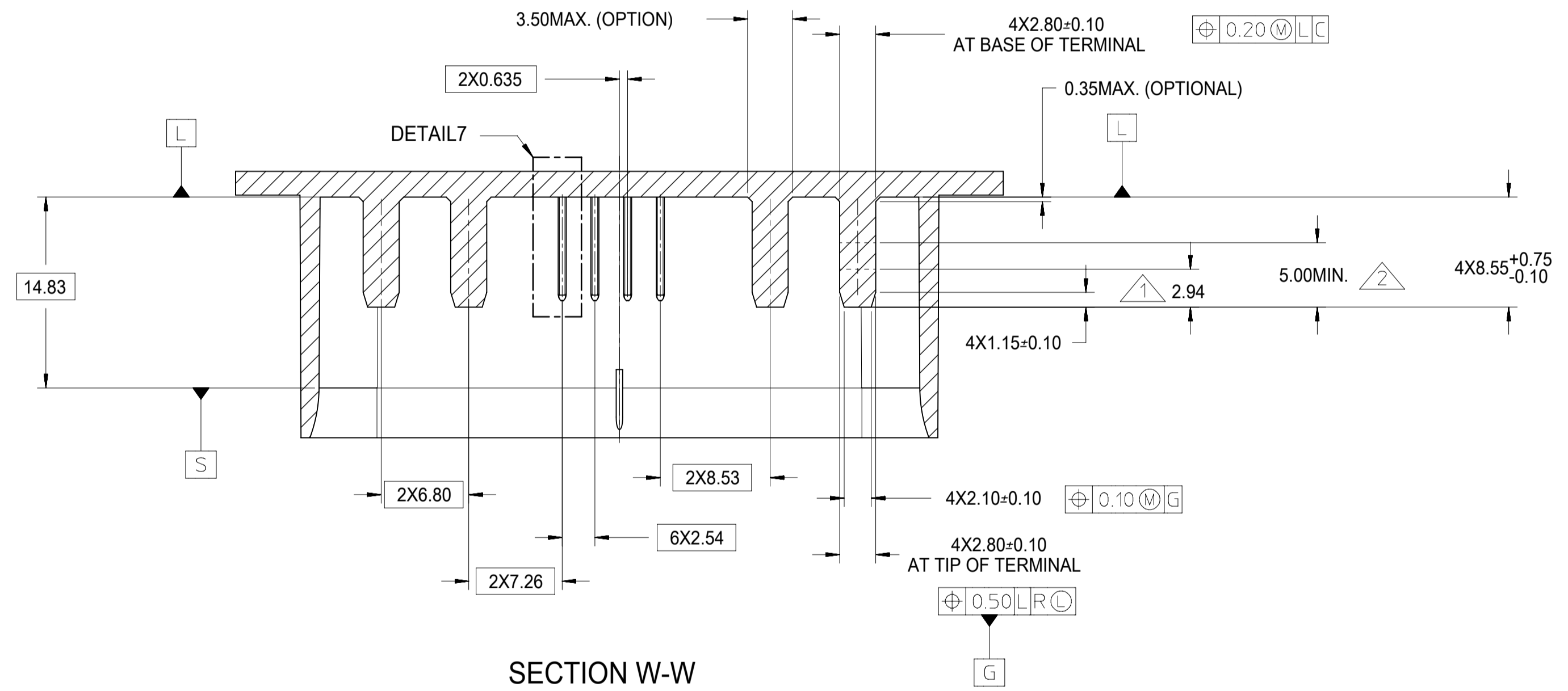
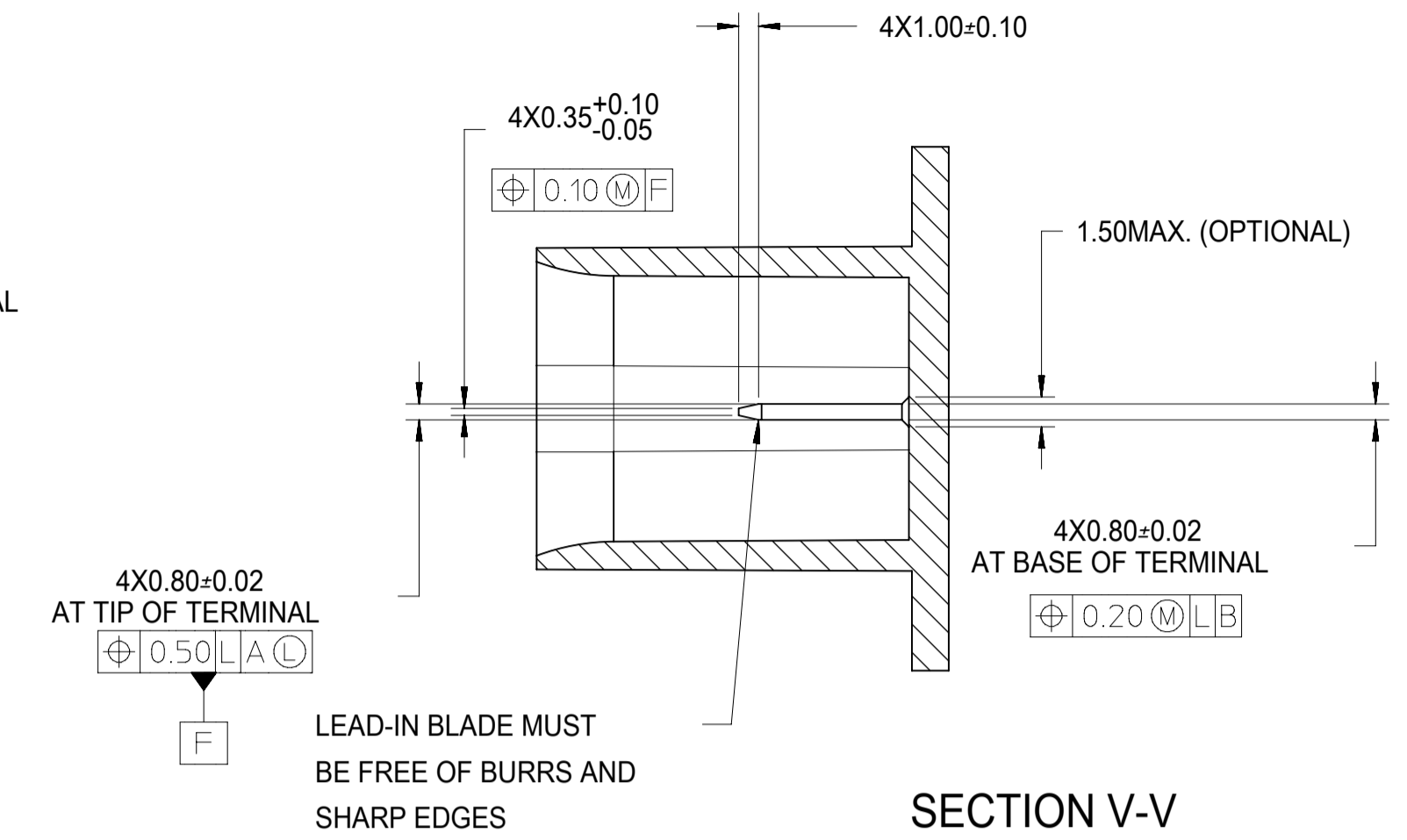
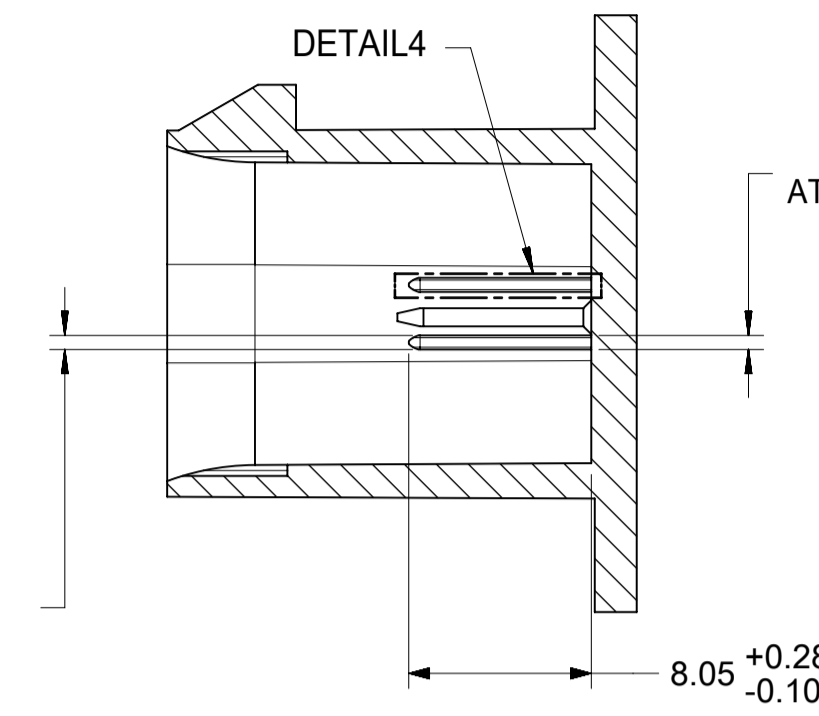
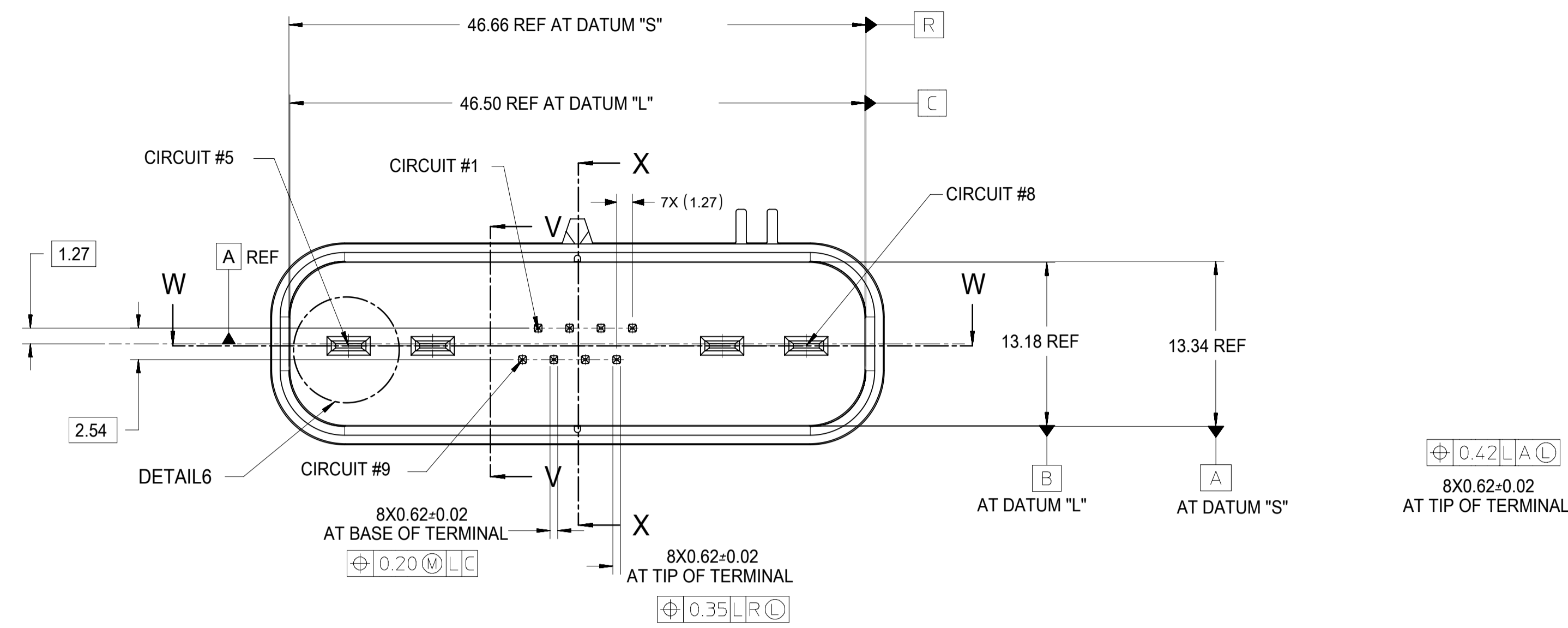


POLARIZATION B

NOTES: UNLESS OTHERWISE SPECIFIED.

6. THE STEEL THAT FORMS THE INSIDE SURFACE OF THE HEADER FLANGE TO 10.00MM INSIDE MUST BE POLISHED WITH A DIAMOND FINISH (SPI A-2) OVER THE FULL PERIPHERY OF THE TOOL. THIS SURFACE MUST ALSO HAVE NO STEEL MATCH OR PARTING LINES.

<b>QUALITY SYMBOLS</b> FA = 0 FE = 0 EE = 0 TD = 0 CC = 0 X = 0 ■ = 0 V = 0	THIS DRAWING CONTAINS INFORMATION THAT IS PROPRIETARY TO MOLEX ELECTRONIC TECHNOLOGIES, LLC AND SHOULD NOT BE USED WITHOUT WRITTEN PERMISSION				<b>molex</b> 12 WAY HYBRID HARNESS CONNECTOR ASSEMBLY ISO WIRE PRODUCT CUSTOMER DRAWING		
	EC NO: 608393 DRWN: HKLIANG CHKD: JDENG02 REV: APPR: JDENG02	2018/12/04 2018/12/07 2018/12/07	GENERAL TOLERANCES (UNLESS SPECIFIED) ANGULAR TOL ± 0.5 ° 4 PLACES ± 3 PLACES ± 2 PLACES ± 0.13 1 PLACE ± 0.25 0 PLACES ± DRAFT WHERE APPLICABLE MUST REMAIN WITHIN DIMENSIONS	DIMENSION UNITS: mm SCALE: 1:1 DRWN BY: PXU25 DATE: 2017/08/09 CHK'D BY: GLI04 DATE: 2017/09/05 APPR BY: JDENG02 DATE: 2017/09/19 DRAWING SIZE: A1 THIRD ANGLE PROJECTION			



NOTES: UNLESS OTHERWISE SPECIFIED.

▲ PLATING POINT OF MEASUREMENT.

▲ PLATING TO BE 2.50-4.00 MICROMETERS BRIGHT TIN OVER 1.25-2.25 MICROMETERS NICKEL PER FORD ES-F8D8-14A229-AA/BA/CA/DA, REVISION"RELEASE". NO BARE EDGES ALLOWED.

QUALITY SYMBOLS FA = 0 FE = 0 FE = 0 ▼ = 0 C = 0 ☒ = 0 ■ = 0 ∇ = 0		THIS DRAWING CONTAINS INFORMATION THAT IS PROPRIETARY TO MOLEX ELECTRONIC TECHNOLOGIES, LLC AND SHOULD NOT BE USED WITHOUT WRITTEN PERMISSION		GENERAL TOLERANCES (UNLESS SPECIFIED) DIMENSION UNITS: mm SCALE: 1:1		<b>molex</b> <sup>®</sup>	
EC NO: 608393 DRWN: HKLIANG CHKD: JDENG02 REV: APPR: JDENG02		DRWN BY: PXU25 DATE: 2017/08/09 CHKD BY: GLI04 DATE: 2017/09/05 APPR BY: JDENG02 DATE: 2017/09/19		12 WAY HYBRID HARNESS CONNECTOR ASSEMBLY ISO WIRE		PRODUCT CUSTOMER DRAWING	
DRAFT WHERE APPLICABLE MUST REMAIN WITHIN DIMENSIONS		DRAWING SIZE: A1 THIRD ANGLE PROJECTION		SERIES: 31034 MATERIAL NUMBER: SEE CHART CUSTOMER:		DOCUMENT NUMBER: SD-31034-001 DOC TYPE: PSD DOC PART: 001 SHEET NUMBER: 5 OF 5	