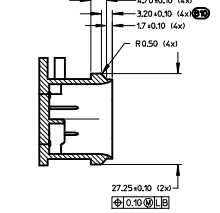
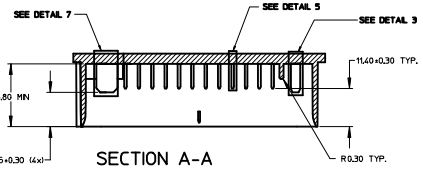
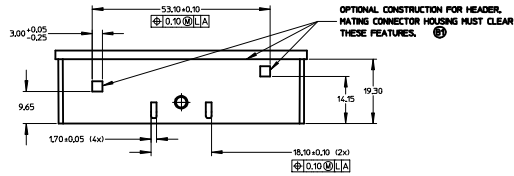


NOTES:

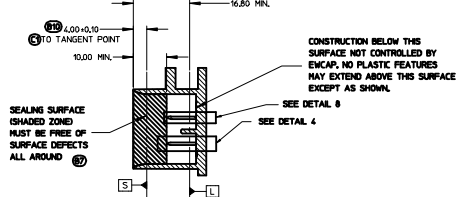
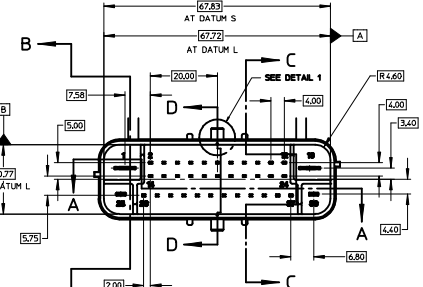
1. ALL DIMENSIONS SHOWN IN MILLIMETERS.
2. DIMENSIONING AND TOLERANCING PER ASME Y14.5-1994.
3. RADIUS ON ALL CORNERS SHOWN SHARP OR ALL UNSPECIFIED RADII 0.25 EXCEPT AS NOTED.
4. REFER TO "SAE/USCAR-12 CONNECTOR DESIGN GUIDELINES" FOR ADDITIONAL INFORMATION.
5. 0.25 DEGREE DRAFT ON ALL INSIDE SURFACES, UNLESS OTHERWISE SPECIFIED.
6. STANDARD COLORS FOR POLARIZATION - DEVIATION REQUIRES APPROVAL OF AUTHORIZED PERSON.
7. REFER TO DRAWING EMCAP-001 FOR TERMINAL GEOMETRY AND PLATING DETAILS.



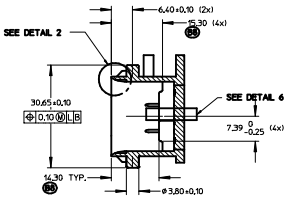
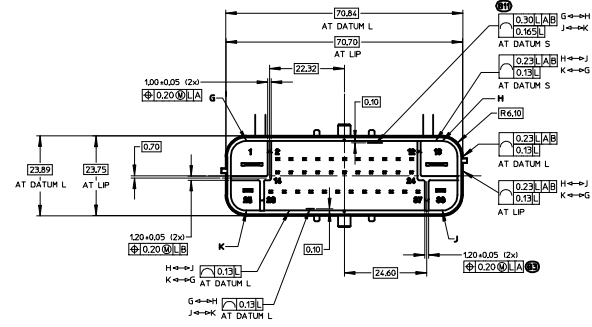
SECTION C-C



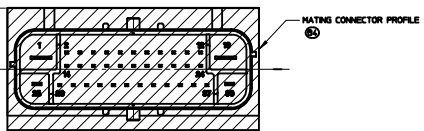
SECTION A-A



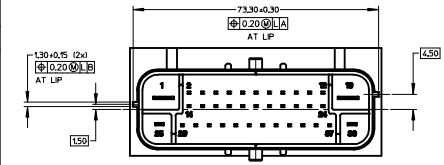
SECTION B-B



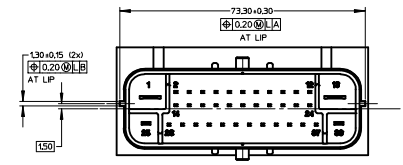
SECTION D-D



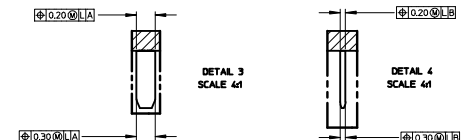
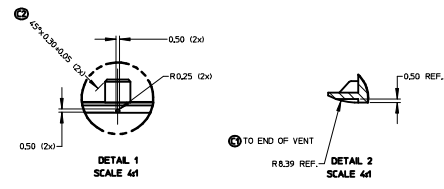
999-S-039-001	C	BROWN
999-S-039-001	B	GRAY
999-S-039-001	A	BLACK
USCAR PART NO.	OPTION	COLOR



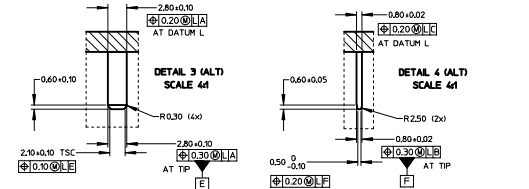
POLARIZATION 'A'



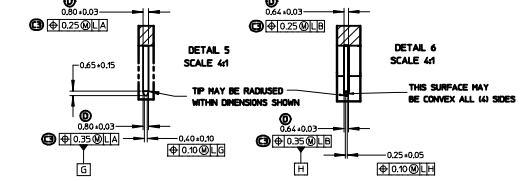
POLARIZATION 'B'



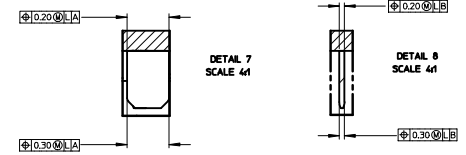
2.80MM BLADE DETAIL  
SEE DRAWING EMCAP-001 FOR DETAILS



2.80MM BLADE DETAIL (ALTERNATE) #2



0.80X0.64MM BLADE DETAIL #3  
(ABS INTERFACE ONLY)



6.30MM BLADE DETAIL  
SEE DRAWING EMCAP-001 FOR DETAILS

009	D	REVISED 0.64mm x 0.60mm PIN SIZE TOLERANCE +0.03	03292005	MCD	BBW
0091	C5	REVISED 0.64mm POS. 0.25 BASE/0.35 TIP	11022004	MCD	BBW
	C2	ADDED CHAMFER DIMENSION 45°±0.30±0.05			
	C1	CLARIFIED LOCATION OF TANGENT POINT			
	B11	INCREASED TOLERANCE ON LONG SIDES			
	B9	DIMENSION FEATURES TO FRONT OF SHROUD			
	B8	REVISED GD&T ON 0.80X0.64 BLADE			
	B7	ADDED CIRCUIT DIVIDER HEIGHT			
	B6	ADDED SEALING AREA DESCRIPTION			
0021	A	RELEASED	02022003	MCD	BBW
0021		B	08252003	MCD	BBW

OWNER: CIRCULAR 2003

LET REVISION RECORD DATE DWN CHK

TOLERANCES UNLESS OTHERWISE SPECIFIED: DIMENSIONS ARE IN MILLIMETERS

ANGLE °' ✓ HLT ✓ HLT

SCALE 2:1 DRAWN BY DANIELS CHECKED BY WILSON DATE 08/25/2003

TITLE 30 CIRCUIT ABS CONNECTOR INTERFACE -OPTION 2

REV: 01 DRAWN: DANIELS



TO BE DETERMINED  
POLARIZATION 'C'

**TABLE OF CONTENTS**

SHEET NO.	SHEET DESCRIPTION
1	NOTES AND BOM
2	CONFIGURATIONS
3	RECEPTACLE CONNECTOR ASSEMBLY
4	WIRE SHIELD

**MATING INTERFACE DRAWINGS**

SERIES	INTERFACE DEFINITION
31380	*999-S-038-3-Z01
31381	*999-S-038-3-Z02

NOTES: VALID UNLESS OTHERWISE SPECIFIED

- CONNECTOR TO BE SHIPPED WITH TPA IN PRE-LOAD POSITION AS SHOWN IN SECTION Z-Z.
- ALL TEXT TO BE CLEARLY LEGIBLE AND 1.50MM MIN. HEIGHT. MARKING ORIENTATION MAY BE PARALLEL TO THE LENGTH OF THE PART, AS SHOWN, OR PERPENDICULAR TO THE LENGTH OF THE PART.

DATE CODE DESCRIPTION:

- 1st THROUGH 3rd DIGIT = "DAY#" OF THE CALENDAR YEAR. (EXAMPLE FEB. 3rd = '034')
  - LAST DIGIT = LAST DIGIT OF CALENDAR YEAR. (EXAMPLE: 2000 = '0')
- SERIAL NUMBER DESCRIPTION:
- FIRST CHARACTER "M." = ASSEMBLY MACHINE NUMBER
  - FOLLOWING NUMBER STARTS AT "00001" AND IS RESET FOR EACH NEW "DAY#".
- MOLEX PART NUMBER:
- SEE TABLE

3. DIMENSIONS NOT SHOWN CAN BE OBTAINED FROM THE ASSOCIATED MODEL.

4. GENERAL:

- APPLICATION SPECIFICATION SEE: AS-31380-001
  - CONTAINS: PRODUCT INTRODUCTION, PRODUCT SUMMARY, HARNESS ASSEMBLY, CONNECTOR MATING, AND SERVICE INSTRUCTIONS.
  - DESIGNED TO MATE WITH DEVICE AS SPECIFIED IN THE MATING INTERFACE DRAWINGS CHART.
  - \*DENOTES DRAWINGS THAT CAN BE ACCESSED AT <<http://ewcap.uscarteams.org/>>.
- PRODUCT SPECIFICATION SEE: PS-31380-100
  - CONTAINS: PRODUCT INTRODUCTION, PRODUCT SUMMARY, RATINGS (CURRENT AND TEMPERATURE), TERMINALS, WIRE DIAMETER RANGE, PRODUCT VALIDATION, AND PRODUCT DEVIATIONS.
- PACKAGING SPECIFICATION PER MOLEX DRAWING: PK-31300-550
- PARTS MUST BE IN COMPLIANCE TO MOLEX CHEMICAL SUBSTANCES FOR PRODUCTS AND PACKAGING SPECIFICATION: QEHS-699000-300
- DATA MUST BE SUBMITTED UNDER THE MOLEX PART NUMBER TO IMDS (COMPANY ID#13255)

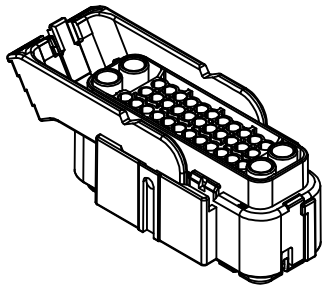
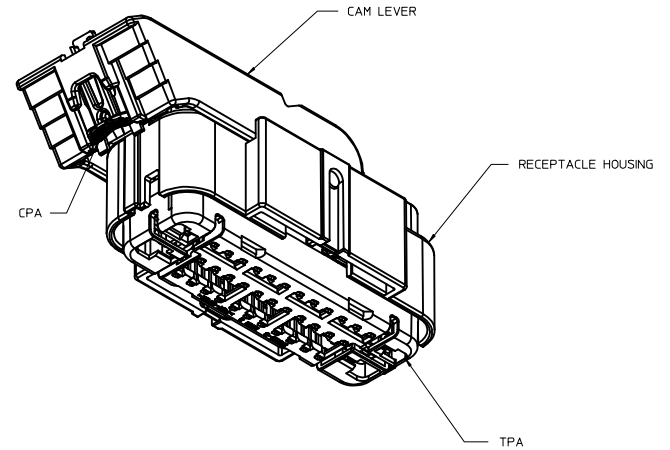
5. DESIGN - MATERIALS:

- SEE BOM TABLE IN SD-31380-0002

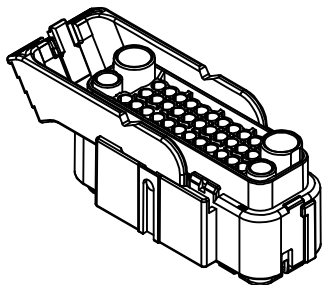
6. DESIGN - GEOMETRY:

- THE 3-D CAD DATA IS BASIC (WITHOUT TOLERANCE) AND MASTER FOR THIS PART WITH THE EXCEPTION OF UNDERLINED DIMENSIONS. DIMENSIONAL INFORMATION NOT SHOWN ON THIS DRAWING IS DEFINED BY THE DATA FILE AT ITS LATEST REVISION.
- GEOMETRIC DIMENSIONS AND TOLERANCES PER ASME Y14.5M-2009
- EDGES AND UNDIMENSIONED DETAILS PER ISO13715
- CORNERS SHOWN AS SHARP TO BE R 0.2 MAX.
- VISUAL DEFECTS SHALL MEET COSMETIC STANDARD PS-45499-002 (Class B).

7. MUST BE USED WITH WIRE SHIELD - MOLEX PART NUMBER 31382-1001. WIRE SHIELD SHIPPED SEPARATELY.



31381 SERIES



31380 SERIES

INSPECTION NUMBER LOG	
LAST NUMBER: 2	A INITIAL RELEASE
ADDED:	
REMOVED:	

REVISION	DESCRIPTION	QUALITY SYMBOLS		GENERAL TOLERANCES (UNLESS SPECIFIED)		DIMENSION STYLE		DRAWN BY	DATE	CHECKED BY	DATE	APPROVED BY	DATE	MATERIAL NO.	DOCUMENT NO.	SHEET NO.
		mm	INCH	MM ONLY	SCALE	DESIGN UNITS	THIRD ANGLE PROJECTION									
1	ENTER DESCRIPTION EC NO: UAU2014-1972 DRWNAFF/ITT 2014/06/26 CHKOKR/IZI 2014/06/27 APPR:VKOSHY 2014/06/30	▽=0	▽=0	4 PLACES ±---	±---	MM ONLY	1.5:1	APPROFIT	2014/06/26			APPROVED BY	2014/06/30	SEE NOTE 5a.	SD-31380-0001	1 OF 4
		▽=0	▽=0	3 PLACES ±---	±---											
		▽=0	▽=0	2 PLACES ±0.13	±---											
		▽=0	▽=0	1 PLACE ±0.25	±---											
		▽=0	▽=0	0 PLACE ±---	±---											
				ANGULAR ± 1°												
				DRAFT WHERE APPLICABLE MUST REMAIN WITHIN DIMENSIONS												

USCAR 38 WAY HYBRID RCPT SEALED ASSEMBLY

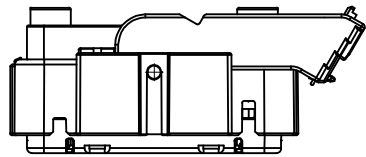
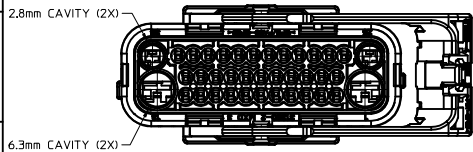


SD-31380-0001

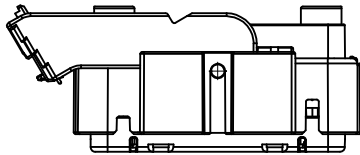
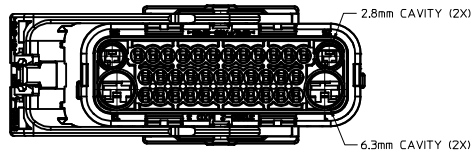
THIS DRAWING CONTAINS INFORMATION THAT IS PROPRIETARY TO MOLEX INCORPORATED AND SHOULD NOT BE USED WITHOUT WRITTEN PERMISSION

**SHEET DESCRIPTION**

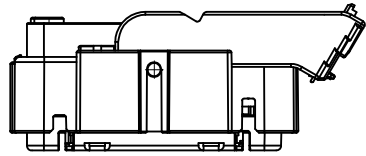
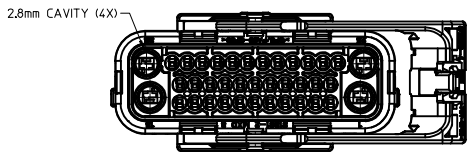
CONFIGURATIONS



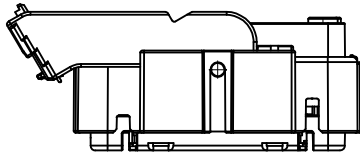
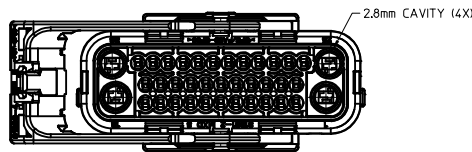
31380-10XX  
TYPE II HARNESS ASSEMBLY  
COUNTERCLOCKWISE LEVER THROW



31380-11XX  
TYPE II HARNESS ASSEMBLY  
CLOCKWISE LEVER THROW



31381-10XX  
TYPE I HARNESS ASSEMBLY  
COUNTERCLOCKWISE LEVER THROW

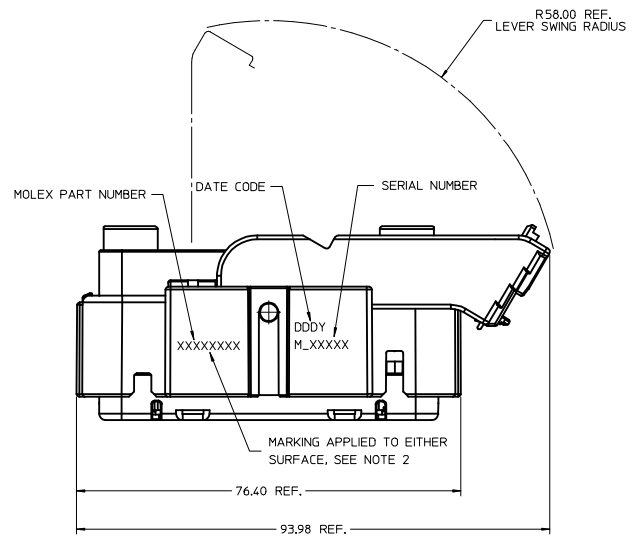
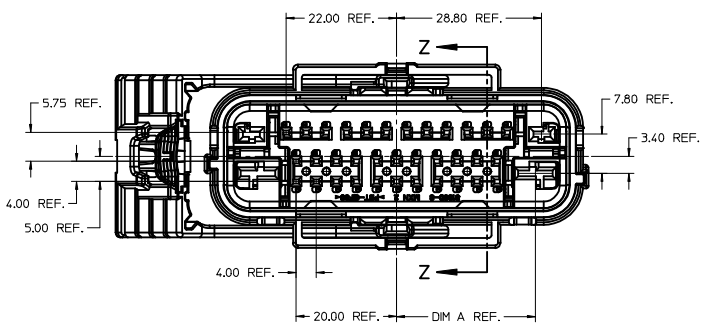
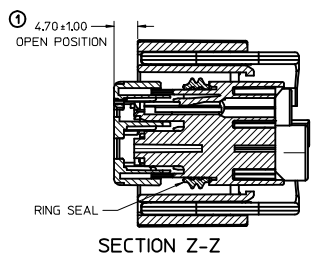
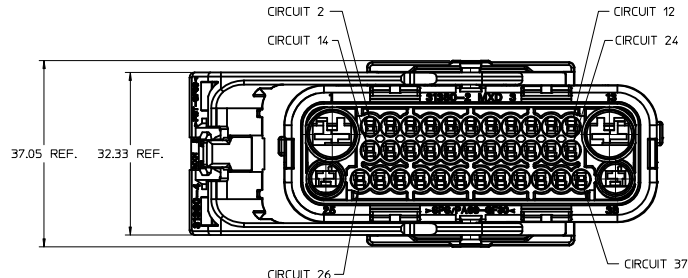


31381-11XX  
TYPE I HARNESS ASSEMBLY  
CLOCKWISE LEVER THROW

<b>ENTER DESCRIPTION</b> EDC NO: UAU2014-1972 DRAWN BY: APROFFITT 2014/06/26 CHECKED BY: CHYKORIZZI 2014/06/27 APPR: VKOSHY 2014/06/30 A	QUALITY SYMBOLS ▽=0 ▽=0 ▽=0	GENERAL TOLERANCES (UNLESS SPECIFIED) mm INCH 4 PLACES ± --- ± --- 3 PLACES ± --- ± --- 2 PLACES ± 0.13 ± --- 1 PLACE ± 0.25 ± --- 0 PLACE ± --- ± --- ANGULAR ± 1 ° DRAFT WHERE APPLICABLE MUST REMAIN WITHIN DIMENSIONS	DIMENSION STYLE <b>MM ONLY</b> DRAWN BY: APROFFITT DATE: 2014/06/26 CHECKED BY: DATE: APPROVED BY: VKOSHY DATE: 2014/06/30 MATERIAL NO.: SEE NOTE 5a. SIZE: 1 THIS DRAWING CONTAINS INFORMATION THAT IS PROPRIETARY TO MOLEX INCORPORATED AND SHOULD NOT BE USED WITHOUT WRITTEN PERMISSION	SCALE: 1.5:1 DESIGN UNITS: METRIC THIRD ANGLE PROJECTION	TITLE: USCAR 38 WAY HYBRID RCPT SEALED ASSEMBLY <b>molex</b> DOCUMENT NO.: SD-31380-0001 SHEET NO.: 2 OF 4
---	--------------------------------------	---	---	--	---

**SHEET DESCRIPTION**  
RECEPTACLE CONNECTOR ASSEMBLY

CHARTED DIMENSIONS	
SERIES	DIMENSION
31380	A
31381	27.58
	27.90



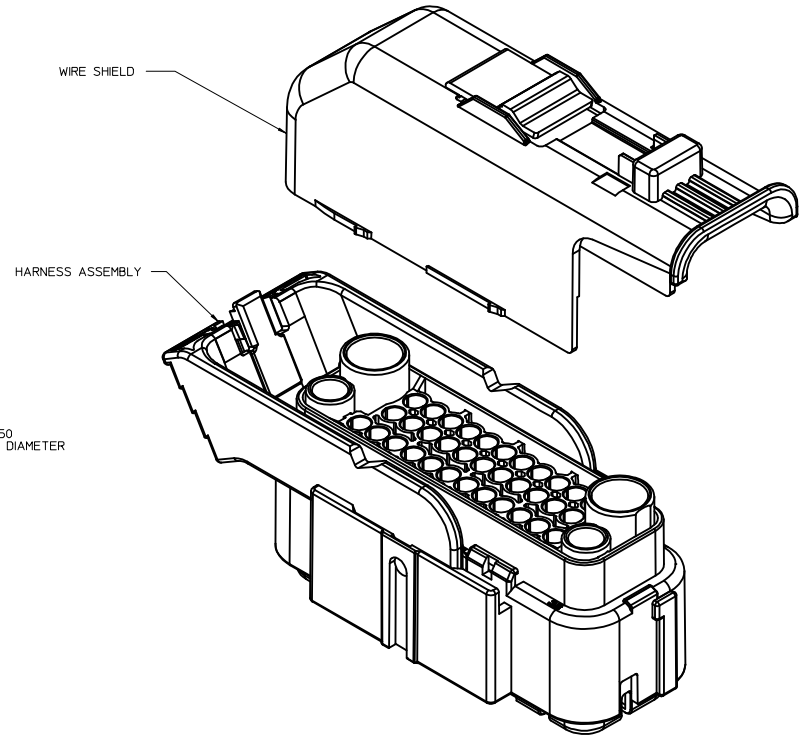
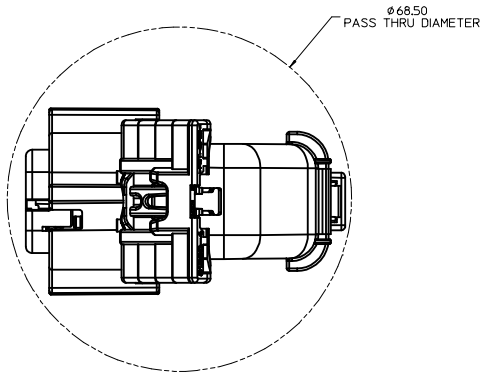
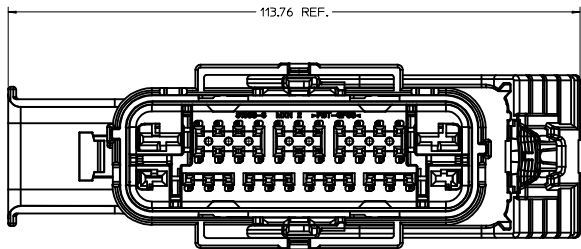
<b>ENTER DESCRIPTION</b> EC NO: UAU2014-1972 DRW/APPROFIT: 2014/06/26 CHK/KR/IZI: 2014/06/27 APPR:VKOSHY: 2014/06/30	<b>QUALITY SYMBOLS</b> ∇=0 ∇=0 ∇=0 ∇=0	<b>GENERAL TOLERANCES (UNLESS SPECIFIED)</b>		<b>DIMENSION STYLE</b> MM ONLY		SCALE 2:1	DESIGN UNITS METRIC	THIRD ANGLE PROJECTION	
		4 PLACES ± --- ± --- 3 PLACES ± --- ± --- 2 PLACES ± 0.13 ± --- 1 PLACE ± 0.25 ± --- 0 PLACE ± --- ± ---	m/m INCH	DRAWN BY APROFFITT	DATE 2014/06/26	TITLE USCAR 38 WAY HYBRID RCPT SEALED ASSEMBLY			
		ANGULAR ± 1 ° DRAFT WHERE APPLICABLE MUST REMAIN WITHIN DIMENSIONS		APPROVED BY VKOSHY	DATE 2014/06/30	MATERIAL NO. SEE NOTE 5a.			
				DOCUMENT NO. SD-31380-0001		SHEET NO. 3 OF 4			



**SHEET DESCRIPTION**  
WIRE SHIELD

WIRESHIELD NOTES: VALID UNLESS OTHERWISE SPECIFIED

1. GENERAL:  
 a. APPLICATION SPECIFICATION SEE: AS-31380-001  
 -WIRE SHIELD (MOLEX PART NUMBER 31382-1001) MUST BE USED WITH HARNESS ASSEMBLY  
 -WIRE SHIELD SHIPPED SEPARATELY  
 -FOR ADDITIONAL INFORMATION SEE THE WIRE SHIELD COMPONENT DRAWING SD-31382-100.



<b>ENTER DESCRIPTION</b> EC NO: UAU2014-1972 DRWNG: APROFF/TT 2014/06/26 CHKDR: R/ZZI 2014/06/27 APPR: VKOSHY 2014/06/30	<b>QUALITY SYMBOLS</b> ∇=0 ∇=0 ∇=0	<b>GENERAL TOLERANCES (UNLESS SPECIFIED)</b>		<b>DIMENSION STYLE</b> MM ONLY		SCALE 2.5:1	DESIGN UNITS METRIC	THIRD ANGLE PROJECTION
		4 PLACES ± --- ± --- 3 PLACES ± --- ± --- 2 PLACES ± 0.13 ± --- 1 PLACE ± 0.25 ± --- 0 PLACE ± --- ± ---	mm INCH	DRAWN BY APROFF/TT	DATE 2014/06/26	TITLE USCAR 38 WAY HYBRID RCPT SEALED ASSEMBLY		
		ANGULAR ± 1 °		APPROVED BY VKOSHY	DATE 2014/06/30	DOCUMENT NO. SD-31380-0001		
		DRAFT WHERE APPLICABLE MUST REMAIN WITHIN DIMENSIONS		SEE NOTE 5a.		SHEET NO. 4 OF 4		



