

6

5

4

3

2

1

D

D

C

C

B

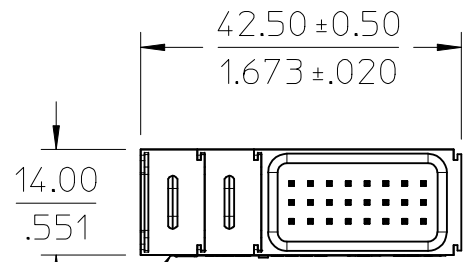
B

A

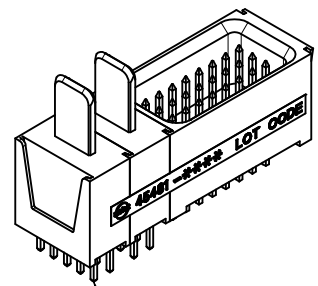
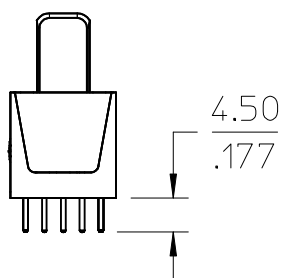
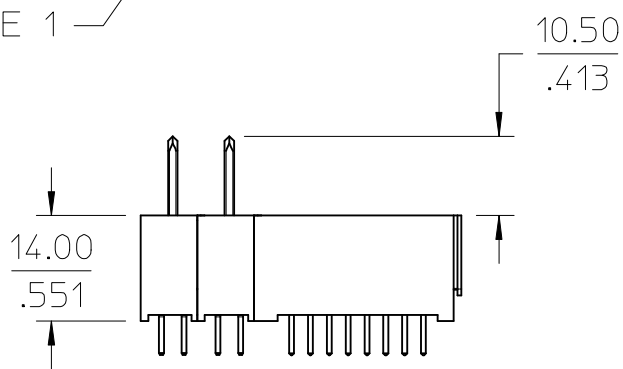
A

NOTES:

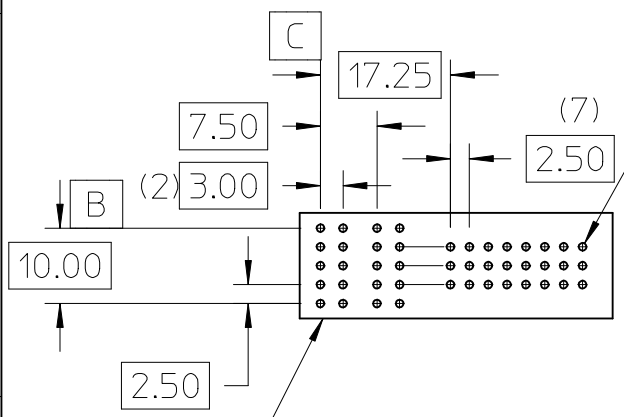
- 1. MATERIAL: LCP, GLASS FILLED, UL94V-0, BLACK
- 2. FINISH: SELECT GOLD 30 M.I.MIN
SELECT TIN 100 M.I.MIN
BOTH OVER NICKEL
- 3. PRODUCT SPECIFICATION: PS-45424-001
- 4. PACKAGING SPECIFICATION: PK-45481-001
- 5. THIS PART CONFORMS TO CLASS B REQUIREMENTS OF COSMETIC SPEC PS-45499-002



MODULE 1



MODULE 1



$\phi 1.02 \pm 0.05$
 $\phi \varnothing 0.05 \text{ (M) } ABC$

PCB LAYOUT: COMPONENT SIDE
 PCB THICKNESS: 2.36/.093 MIN.
 PCB TOLERANCE: ±0.05/.002

| | | |
|-----------|-----------|-----------|
| PD 101 | PD 101 | PD 300 |
|-----------|-----------|-----------|

MODULE 1

| | | | | | | | | | |
|--|-----------------|--|-----------------------------------|-----------------------------------|--|---|-------------------------------|-------------------------------|---------------------|
| INITIAL RELEASE EC NO: UCP2013-2639 DRWN: JSCHAFFER CH'KD: APPR: APATEL 2013/01/02 DESCRIPTION | QUALITY SYMBOLS | GENERAL TOLERANCES (UNLESS SPECIFIED) | | DIMENSION STYLE MM ONLY | | SCALE 1:1 | DESIGN UNITS METRIC | THIRD ANGLE PROJECTION | |
| | $\nabla = 0$ | mm | INCH | DRAWN BY JSCHAFFER | DATE 2012/12/18 | POWER DOCK ASSEMBLY POWER VERTICAL SOLDER TAIL | | | |
| | $\nabla = 0$ | 4 PLACES ± --- | ± --- | CHECKED BY | DATE | | | | |
| | $\nabla = 0$ | 3 PLACES ± --- | ± --- | APPROVED BY APATEL | DATE 2013/01/02 | molex | | DOCUMENT NO. SD-45481-0285 | SHEET NO. 1 OF 1 |
| $\nabla = 0$ | 2 PLACES ± 0.13 | ± --- | MATERIAL NO. 45481-0285 | | THIS DRAWING CONTAINS INFORMATION THAT IS PROPRIETARY TO MOLEX INCORPORATED AND SHOULD NOT BE USED WITHOUT WRITTEN PERMISSION | | | | |
| 1 | REV | ANGULAR ± 1/2° | | SIZE A | | | | | |
| | | DRAFT WHERE APPLICABLE MUST REMAIN WITHIN DIMENSIONS | | | | | | | |

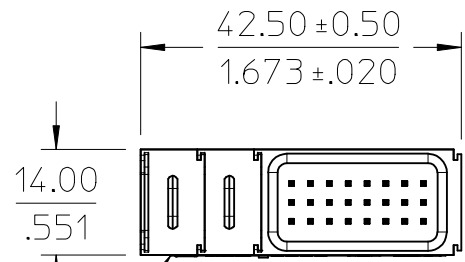
5

4

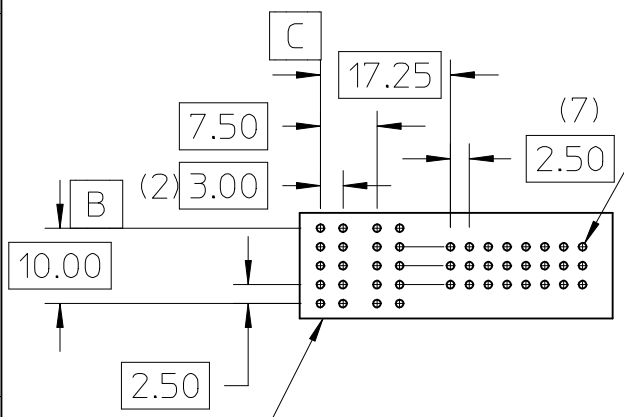
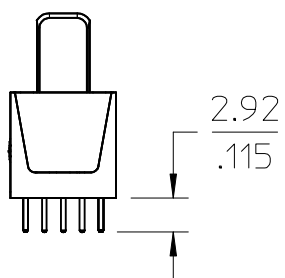
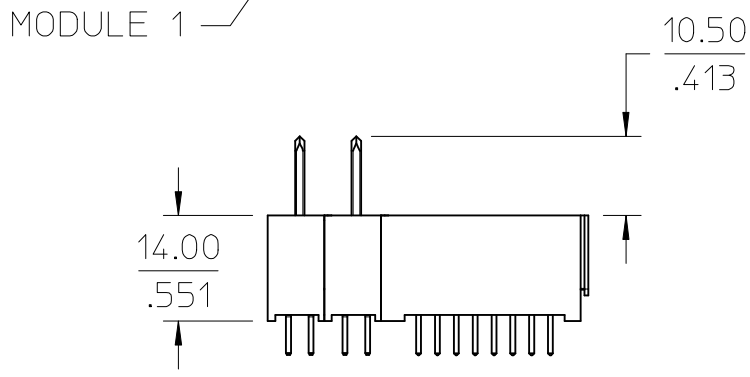
3

2

1

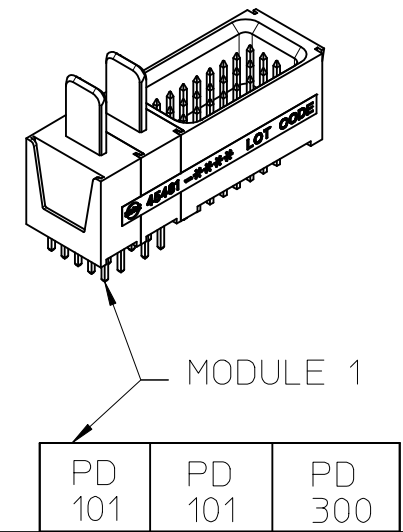


- NOTES:
1. MATERIAL: LCP, GLASS FILLED, UL94V-0, BLACK
 2. FINISH: SELECT GOLD 30 M.I.MIN
SELECT TIN 100 M.I.MIN
BOTH OVER NICKEL
 3. PRODUCT SPECIFICATION: PS-45424-001
 4. PACKAGING SPECIFICATION: PK-45481-001
 5. THIS PART CONFORMS TO CLASS B REQUIREMENTS OF COSMETIC SPEC PS-45499-002



$\phi 1.02 \pm 0.05$
 $\phi \varnothing 0.05 \text{ (M) } ABC$

PCB LAYOUT: COMPONENT SIDE
 PCB THICKNESS: 1.57/.062 MIN.
 PCB TOLERANCE: ±0.05/.002



| | | |
|------------|---------------------|------------|
| 2013/04/11 | INITIAL RELEASE | 2013/04/12 |
| | EC NO: UCP2013-4396 | |
| | DRWN: JSCHAFFER | |
| | CHKD: APATEL | |
| | APPR: APATEL | |
| 1 | DESCRIPTION | |

| QUALITY SYMBOLS | GENERAL TOLERANCES (UNLESS SPECIFIED) | |
|-----------------|--|-------|
| | mm | INCH |
| $\nabla = 0$ | 4 PLACES ± --- | ± --- |
| $\nabla = 0$ | 3 PLACES ± --- | ± --- |
| $\nabla = 0$ | 2 PLACES ± 0.13 | ± --- |
| $\nabla = 0$ | 1 PLACE ± 0.25 | ± --- |
| | 0 PLACE ± --- | ± --- |
| | ANGULAR ± 1/2° | |
| | DRAFT WHERE APPLICABLE MUST REMAIN WITHIN DIMENSIONS | |

| DIMENSION STYLE | |
|-----------------|------------|
| MM ONLY | |
| DRAWN BY | DATE |
| JSCHAFFER | 2013/04/11 |
| CHECKED BY | DATE |
| APPROVED BY | DATE |
| APATEL | 2013/04/12 |
| MATERIAL NO. | |
| 45481-0286 | |
| SIZE | |
| A | |

| | | |
|--|--------------|------------------------|
| SCALE | DESIGN UNITS | THIRD ANGLE PROJECTION |
| 1:1 | METRIC | |
| TITLE | | |
| POWER DOCK ASSEMBLY POWER VERTICAL SOLDER TAIL | | |
| molex | | |
| DOCUMENT NO. | SHEET NO. | |
| SD-45481-0286 | 1 OF 1 | |