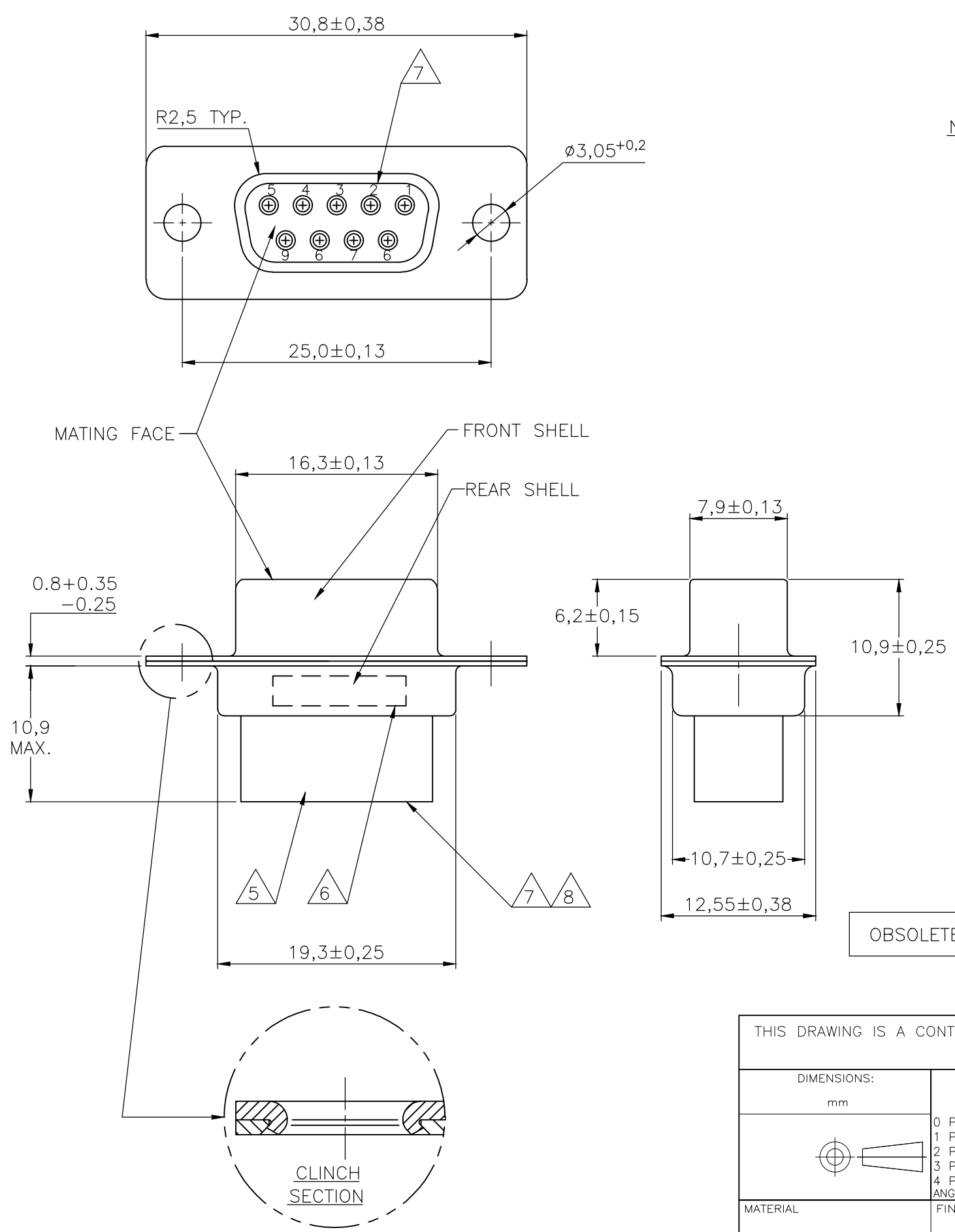


THIS DRAWING IS UNPUBLISHED. RELEASED FOR PUBLICATION
 © COPYRIGHT - By - ALL RIGHTS RESERVED.

REVISIONS				
P	LTR	DESCRIPTION	DATE	APVD
P		REVISED PER ECO-17-014522	26APR2018	AP DG



NOTES:

- THIS RECEPTACLE ACCEPTS SIZE 20 REC. CONTACTS.
- MAXIMUM WIRE INSULATION RECOMMENDED FOR USE WITH THIS RECEPTACLE IS 1,73 DIA. MAX..
- RETENTION TINES ARE AN INTEGRAL PART OF INSERT.
- FOLLOWING INSERTION/REMOVAL TOOLS ARE RECOMMENDED FOR USE WITH THESE CONNECTORS:
 32-28AWG/28-24AWG CONTACTS
 91067-3 INSERTION/REMOVAL
 726363-1 INSERTION ONLY
 24-20AWG CONTACTS
 726363-1 INSERTION ONLY
 726364-1 REMOVAL ONLY

OBSOLETE	BRIGHT TIN	BRIGHT TIN	STEEL	164531-9 $\triangle 8$
	BRIGHT TIN	BRIGHT TIN	STEEL	164531-4
	PLATING FRONT SHELL	PLATING REAR SHELL	MATERIAL SHELLS	PART NUMBER

THIS DRAWING IS A CONTROLLED DOCUMENT.		DWN D. KESSLER 11FEB99	STE TE Connectivity		
DIMENSIONS: mm		CHK W. SOOMERS			
TOLERANCES UNLESS OTHERWISE SPECIFIED:		APVD W. SOOMERS	9 POS HDP-20 RECEPTACLE CONNECTOR SIZE 1		
0 PLC $\pm -$		PRODUCT SPEC	-		
1 PLC $\pm 0,2$		APPLICATION SPEC	-		
2 PLC $\pm -$		WEIGHT	SIZE A3	CAGE CODE -	DRAWING NO C-164531
3 PLC $\pm -$		MATERIAL	RESTRICTED TO -		
4 PLC $\pm -$		FINISH	SCALE NTS		
ANGLES $\pm 2'$			SHEET 1 OF 1		
-			REV P		
-			CUSTOMER DRAWING		