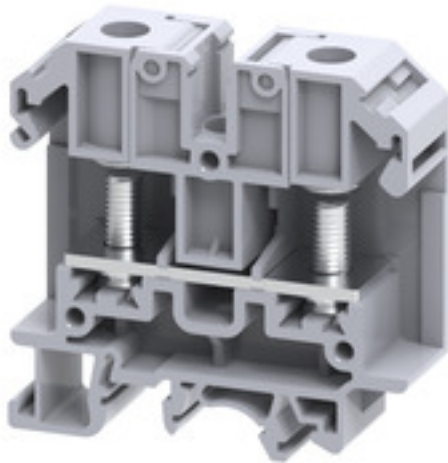


**SRL 6****Weidmüller Interface GmbH & Co. KG**

Klingenbergstraße 26

D-32758 Detmold

Germany

[www.weidmueller.com](http://www.weidmueller.com)**Product image****Klippon® Connect with stud Technology**

Our stud terminals are an established, robust connection alternative for particularly harsh environments. The extensive accessories and quality workmanship ensure high productivity in planning and installation – and sustainable safety in operation..

**General ordering data**

Order No.	<a href="#">2614960000</a>
Type	SRL 6
GTIN (EAN)	4050118654011
Qty.	50 pc(s).

## SRL 6

Weidmüller Interface GmbH &amp; Co. KG

Klingenbergstraße 26

D-32758 Detmold

Germany

www.weidmueller.com

## Technical data

## Dimensions and weights

Depth	63.1 mm	Depth (inches)	2.484 inch
Height	63.9 mm	Height (inches)	2.516 inch
Width	18 mm	Width (inches)	0.709 inch
Net weight	31 g		

## Temperatures

Storage temperature	-25 °C...55 °C	Continuous operating temp., min.	120 °C
Continuous operating temp., max.	-50 °C		

## Material data

Material	Polyamide	Colour	grey
----------	-----------	--------	------

## System specifications

End cover plate required	Yes	Number of potentials	1
Number of levels	1	Number of clamping points per level	2
Number of potentials per tier	1	PE connection	No
Rail	TS 35, TS 32	N-function	No
PE function	No	PEN function	No

## Additional technical data

Open sides	right
------------	-------

## CSA rating data

Certificate number (cCSAus)	70198655	Wire cross section max. (cCSAusX)	8 AWG
Wire cross section min. (cCSAusX)	22 AWG		

## Conductors for clamping (rated connection)

2 x cable lugs DIN 46 234	1.5...35 mm <sup>2</sup>	2 x cable lugs DIN 46 235	1.5...35 mm <sup>2</sup>
Cable lug to DIN 46234	1.5...35 mm <sup>2</sup>	Cable lug to DIN 46235	1.5...35 mm <sup>2</sup>
Clamping range, bolted connection , max.	35 mm <sup>2</sup>	Clamping range, bolted connection , min.	1.5 mm <sup>2</sup>
Connection cross-section, stranded, max.	35 mm <sup>2</sup>	Connection cross-section, stranded, min.	1.5 mm <sup>2</sup>
Connection direction	on side	Number of connections	2
Tightening torque, max.	3 Nm	Tightening torque, min.	3 Nm
Type of connection	Threaded stud connection	Wire connection cross section AWG, max.	AWG 2
Wire connection cross section AWG, min.	AWG 22		

## General

Rail	TS 35, TS 32	Standards	IEC 60947-7-1
Wire connection cross section AWG, max.	AWG 2	Wire connection cross section AWG, min.	AWG 22

**SRL 6**

**Weidmüller Interface GmbH & Co. KG**  
 Klingenbergstraße 26  
 D-32758 Detmold  
 Germany

www.weidmueller.com

**Technical data**

**Rating data**

Rated cross-section	35 mm <sup>2</sup>	Rated voltage	1,000 V
Rated DC voltage	1,000 V DC	Rated current	125 A
Standards	IEC 60947-7-1	Volume resistance according to IEC 60947-7-x	0.26 mΩ
Rated impulse withstand voltage	8 kV	Power loss in accordance with IEC 60947-7-x	4 W
Pollution severity	3		

**UL rating data**

Certificate No. (cURus)	E60693
-------------------------	--------

**Classifications**

ETIM 6.0	EC000897	ETIM 7.0	EC000897
ETIM 8.0	EC000897	ECLASS 9.0	27-14-11-20
ECLASS 9.1	27-14-11-20	ECLASS 10.0	27-14-11-20
ECLASS 11.0	27-14-11-20		

**Approvals**

Approvals



ROHS	Conform
UL File Number Search	E60693

**Downloads**

Engineering Data	<a href="#">CAD data – STEP</a>
User Documentation	<a href="#">StorageConditionsTerminalBlocks</a>
Catalogues	<a href="#">Catalogues in PDF-format</a>

**Data sheet**

**SRL 6**

**Weidmüller Interface GmbH & Co. KG**  
Klingenbergstraße 26  
D-32758 Detmold  
Germany

[www.weidmueller.com](http://www.weidmueller.com)

**Drawings**

