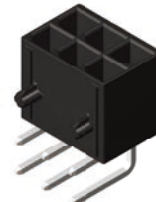




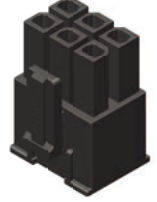
CP35 Series



CP-01X Series



CP60 Series



Series	Pitch	Row	Pin	Wire Range	Current Rating
CP35	3.00 mm	Single Row Dual Row	02~12 02~24	AWG#20~#30	1A~7A
CP-01X	4.20 mm	Single Row Dual Row	03~05 02~24	AWG#16~#26	2A~12A
CP60	5.70 mm	Dual Row	02~12	AWG#12~#16	12A~23A

Application

- Industrial Electronics
- Home Electronics
- Automotive Electronics



瀚荃集團
CviLux Group
Since 1990



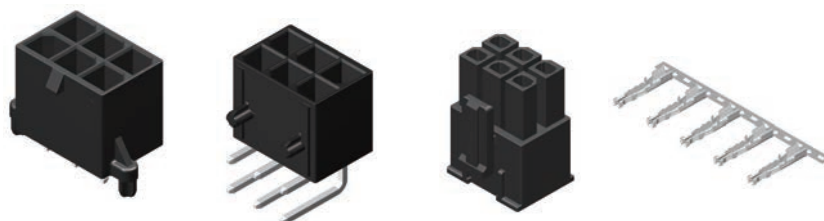
www.cvilux.com

Connect the World, Connect the Future.

NEW



CP60 Series : 5.70mm Wire to Board Power Connector



Specification	Material	Plating	CviLux P/N
Receptacle Housing No. of circuits: 02, 04, 06, 08, 10, 12	Nylon 94V-2 GWT	-	CP60**SN010
	PBT 94V-0	-	CP60**S0010
Female Crimp Terminal Wire gauge: AWG #12, #14, #16	High conductivity Copper alloy	Bright Tin	CP60T0*1PP0-HC
		Selective GF 15u" GF 30u"	CP60T0*BPP0-HC CP60T0*CPP0-HC
Vertical Header No. of circuits: 02, 04, 06, 08, 10, 12	LCP 94V-0 GWT	Bright Tin	CP60**P1V00-NH
		Selective GF 15u" Selective GF 30u"	CP60**PBV00-NH CP60**PCV00-NH
Right Angel Header No. of circuits: 02, 04, 06, 08, 10, 12	LCP 94V-0 GWT	Bright Tin	CP60**P1H00-NH
		Selective GF 15u" Selective GF 30u"	CP60**PBH00-NH CP60**PCH00-NH

ITEM	TEST CONDITION REQUIREMENT				
Rated voltage(max.)	600V AC (r.m.s.)				
Rated Current(max.) and Applicable Wire	Circuits/Wire gage	2	4	6	12
	AWG#12 wire gage, 4.00 mm ²	23A	20A	18A	16A
	AWG#14 wire gage, 2.50 mm ²	21A	17A	15A	13A
	AWG#16 wire gage, 1.50 mm ²	17A	15A	13A	12A
Suggestion	Highly suggest using Cvilux wire and board side together, it can secure the application safety.				

瀚荃集團
CviLux Group
Since 1990

APPLICABLE STANDARDS

- MIL - STD - 202 | Methods for test of connectors for electronic equipment
- EIA - 364 | Test methods for electrical connectors
- J-STD-020 | Resistance to soldering Temperature for through hole Mounted Devices
- SS-00254 | Test methods for electronic components ,LEAD-FREE soldering Part design standards

ACCOMMODATED P.C.BOARD

- Thickness | 1.6 mm (.063")
- PCB | See attached drawings



https://www.cvilux.com/product?id=307&level=pitch&text=5.70mm&product_id=1496