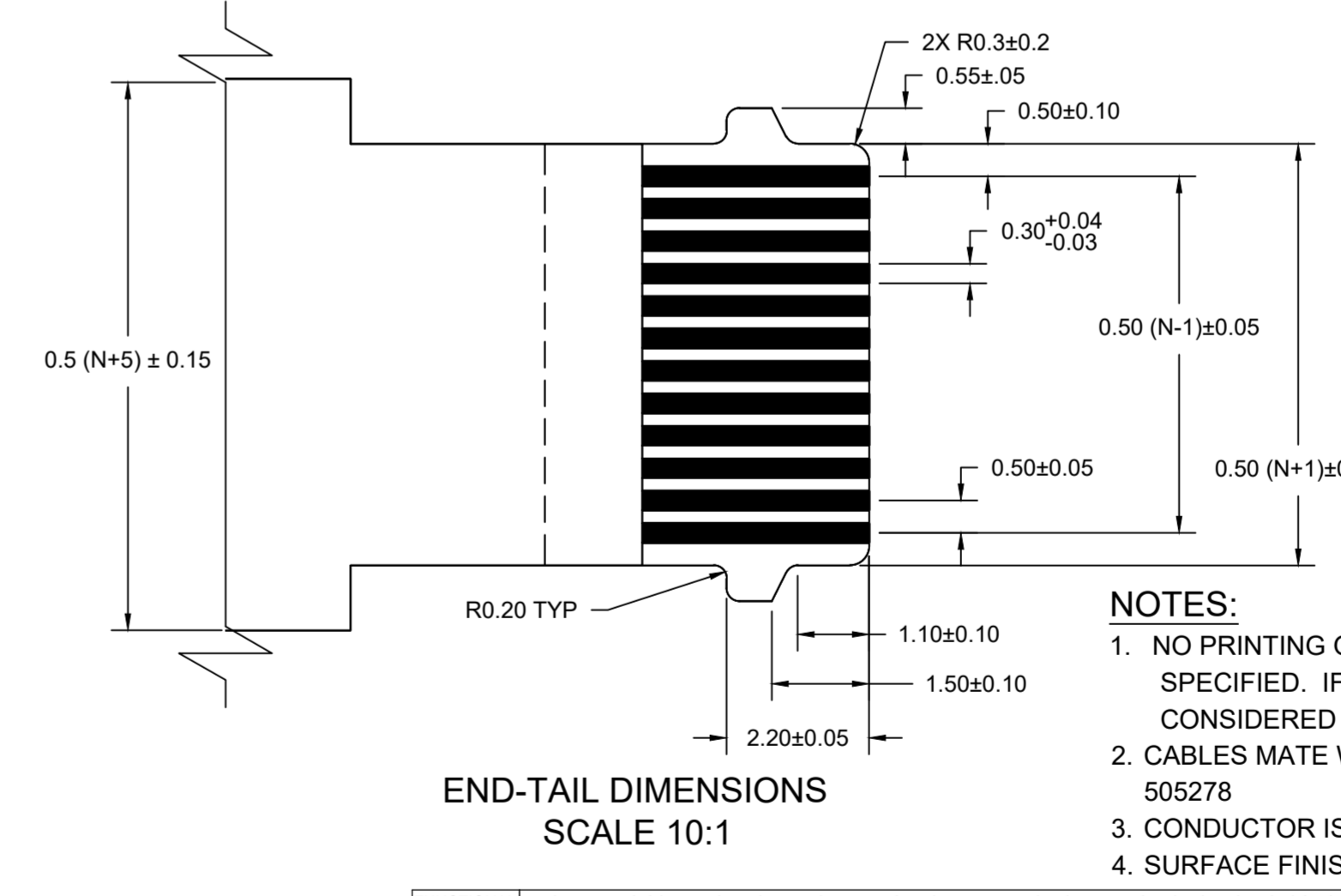
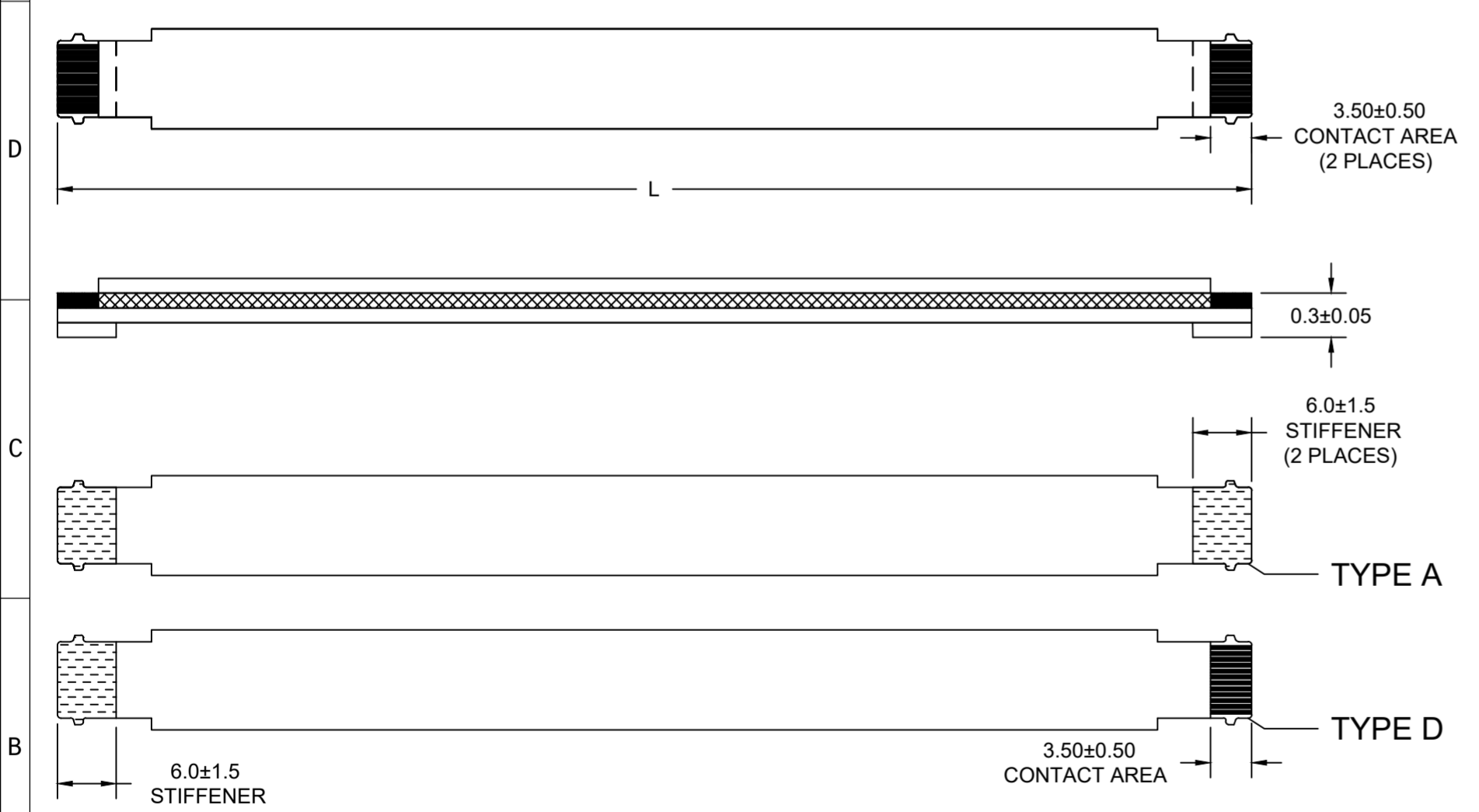
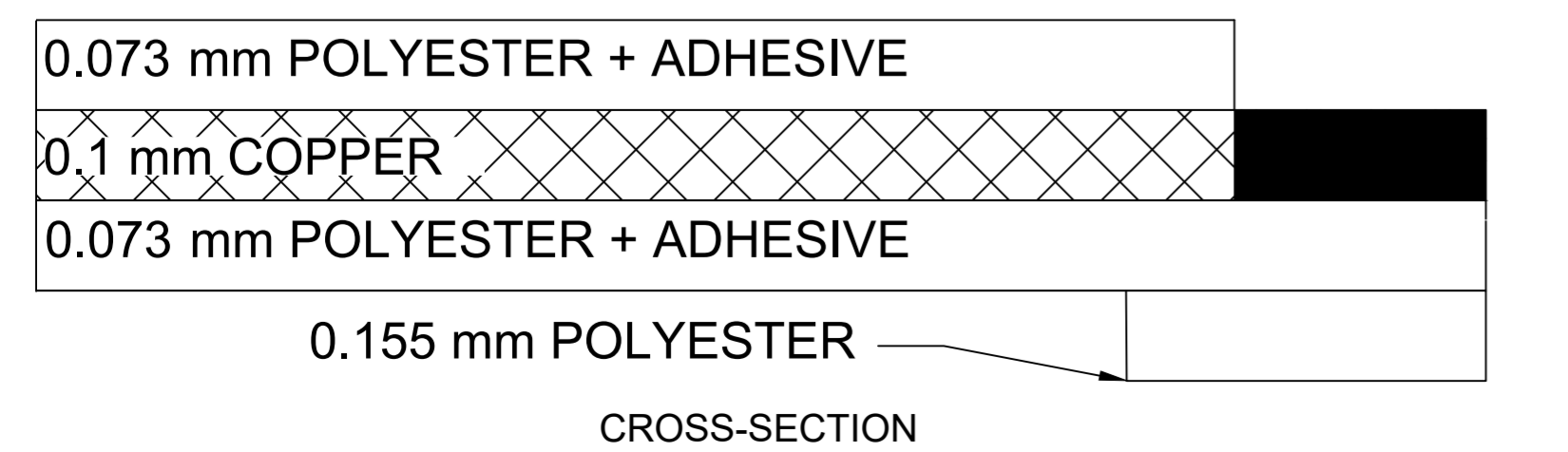


| | 12 | 11 | 10 | 9 | 8 | 7 | 6 | 5 | 4 | 3 | 2 | 1 | | | | | | | | |
|--------------|------------|-----------|------------|-----------|------------|-----------|------------|-----------|------------|-----------|------------|-----------|------------|-----------|------------|-----------|-------------|-----------|-------------|-----------|
| "L" DIM. → | 51 ± 2 MM | | 76 ± 3 MM | | 102 ± 3 MM | | 127 ± 4 MM | | 152 ± 4 MM | | 178 ± 4 MM | | 203 ± 4 MM | | 229 ± 5 MM | | 254 ± 5 MM | | 305 ± 5 MM | |
| REF DIM → | (2 INCHES) | | (3 INCHES) | | (4 INCHES) | | (5 INCHES) | | (6 INCHES) | | (7 INCHES) | | (8 INCHES) | | (9 INCHES) | | (10 INCHES) | | (12 INCHES) | |
| CABLE TYPE → | | | | | | | | | | | | | | | | | | | | |
| CIRCUITS ↓ | A | D | A | D | A | D | A | D | A | D | A | D | A | D | A | D | A | D | A | D |
| 4 | 154660204 | 154661204 | 154660304 | 154661304 | 154660404 | 154661404 | 154660504 | 154661504 | 154660604 | 154661604 | 154660704 | 154661704 | 154660804 | 154661804 | 154660904 | 154661904 | 154660004 | 154661004 | 154660104 | 154661104 |
| 5 | 154660205 | 154661205 | 154660305 | 154661305 | 154660405 | 154661405 | 154660505 | 154661505 | 154660605 | 154661605 | 154660705 | 154661705 | 154660805 | 154661805 | 154660905 | 154661905 | 154660005 | 154661005 | 154660105 | 154661105 |
| 6 | 154660206 | 154661206 | 154660306 | 154661306 | 154660406 | 154661406 | 154660506 | 154661506 | 154660606 | 154661606 | 154660706 | 154661706 | 154660806 | 154661806 | 154660906 | 154661906 | 154660006 | 154661006 | 154660106 | 154661106 |
| 7 | 154660207 | 154661207 | 154660307 | 154661307 | 154660407 | 154661407 | 154660507 | 154661507 | 154660607 | 154661607 | 154660707 | 154661707 | 154660807 | 154661807 | 154660907 | 154661907 | 154660007 | 154661007 | 154660107 | 154661107 |
| 8 | 154660208 | 154661208 | 154660308 | 154661308 | 154660408 | 154661408 | 154660508 | 154661508 | 154660608 | 154661608 | 154660708 | 154661708 | 154660808 | 154661808 | 154660908 | 154661908 | 154660008 | 154661008 | 154660108 | 154661108 |
| 9 | 154660209 | 154661209 | 154660309 | 154661309 | 154660409 | 154661409 | 154660509 | 154661509 | 154660609 | 154661609 | 154660709 | 154661709 | 154660809 | 154661809 | 154660909 | 154661909 | 154660009 | 154661009 | 154660109 | 154661109 |
| 10 | 154660210 | 154661210 | 154660310 | 154661310 | 154660410 | 154661410 | 154660510 | 154661510 | 154660610 | 154661610 | 154660710 | 154661710 | 154660810 | 154661810 | 154660910 | 154661910 | 154660010 | 154661010 | 154660110 | 154661110 |
| 11 | 154660211 | 154661211 | 154660311 | 154661311 | 154660411 | 154661411 | 154660511 | 154661511 | 154660611 | 154661611 | 154660711 | 154661711 | 154660811 | 154661811 | 154660911 | 154661911 | 154660011 | 154661011 | 154660111 | 154661111 |
| 12 | 154660212 | 154661212 | 154660312 | 154661312 | 154660412 | 154661412 | 154660512 | 154661512 | 154660612 | 154661612 | 154660712 | 154661712 | 154660812 | 154661812 | 154660912 | 154661912 | 154660012 | 154661012 | 154660112 | 154661112 |
| 13 | 154660213 | 154661213 | 154660313 | 154661313 | 154660413 | 154661413 | 154660513 | 154661513 | 154660613 | 154661613 | 154660713 | 154661713 | 154660813 | 154661813 | 154660913 | 154661913 | 154660013 | 154661013 | 154660113 | 154661113 |
| 14 | 154660214 | 154661214 | 154660314 | 154661314 | 154660414 | 154661414 | 154660514 | 154661514 | 154660614 | 154661614 | 154660714 | 154661714 | 154660814 | 154661814 | 154660914 | 154661914 | 154660014 | 154661014 | 154660114 | 154661114 |
| 15 | 154660215 | 154661215 | 154660315 | 154661315 | 154660415 | 154661415 | 154660515 | 154661515 | 154660615 | 154661615 | 154660715 | 154661715 | 154660815 | 154661815 | 154660915 | 154661915 | 154660015 | 154661015 | 154660115 | 154661115 |
| 16 | 154660216 | 154661216 | 154660316 | 154661316 | 154660416 | 154661416 | 154660516 | 154661516 | 154660616 | 154661616 | 154660716 | 154661716 | 154660816 | 154661816 | 154660916 | 154661916 | 154660016 | 154661016 | 154660116 | 154661116 |
| 17 | 154660217 | 154661217 | 154660317 | 154661317 | 154660417 | 154661417 | 154660517 | 154661517 | 154660617 | 154661617 | 154660717 | 154661717 | 154660817 | 154661817 | 154660917 | 154661917 | 154660017 | 154661017 | 154660117 | 154661117 |
| 18 | 154660218 | 154661218 | 154660318 | 154661318 | 154660418 | 154661418 | 154660518 | 154661518 | 154660618 | 154661618 | 154660718 | 154661718 | 154660818 | 154661818 | 154660918 | 154661918 | 154660018 | 154661018 | 154660118 | 154661118 |
| 19 | 154660219 | 154661219 | 154660319 | 154661319 | 154660419 | 154661419 | 154660519 | 154661519 | 154660619 | 154661619 | 154660719 | 154661719 | 154660819 | 154661819 | 154660919 | 154661919 | 154660019 | 154661019 | 154660119 | 154661119 |
| 20 | 154660220 | 154661220 | 154660320 | 154661320 | 154660420 | 154661420 | 154660520 | 154661520 | 154660620 | 154661620 | 154660720 | 154661720 | 154660820 | 154661820 | 154660920 | 154661920 | 154660020 | 154661020 | 154660120 | 154661120 |
| 22 | 154660222 | 154661222 | 154660322 | 154661322 | 154660422 | 154661422 | 154660522 | 154661522 | 154660622 | 154661622 | 154660722 | 154661722 | 154660822 | 154661822 | 154660922 | 154661922 | 154660022 | 154661022 | 154660122 | 154661122 |
| 24 | 154660224 | 154661224 | 154660324 | 154661324 | 154660424 | 154661424 | 154660524 | 154661524 | 154660624 | 154661624 | 154660724 | 154661724 | 154660824 | 154661824 | 154660924 | 154661924 | 154660024 | 154661024 | 154660124 | 154661124 |
| 26 | 154660226 | 154661226 | 154660326 | 154661326 | 154660426 | 154661426 | 154660526 | 154661526 | 154660626 | 154661626 | 154660726 | 154661726 | 154660826 | 154661826 | 154660926 | 154661926 | 154660026 | 154661026 | 154660126 | 154661126 |
| 28 | 154660228 | 154661228 | 154660328 | 154661328 | 154660428 | 154661428 | 154660528 | 154661528 | 154660628 | 154661628 | 154660728 | 154661728 | 154660828 | 154661828 | 154660928 | 154661928 | 154660028 | 154661028 | 154660128 | 154661128 |
| 30 | 154660230 | 154661230 | 154660330 | 154661330 | 154660430 | 154661430 | 154660530 | 154661530 | 154660630 | 154661630 | 154660730 | 154661730 | 154660830 | 154661830 | 154660930 | 154661930 | 154660030 | 154661030 | 154660130 | 154661130 |
| 35 | 154660235 | 154661235 | 154660335 | 154661335 | 154660435 | 154661435 | 154660535 | 154661535 | 154660635 | 154661635 | 154660735 | 154661735 | 154660835 | 154661835 | 154660935 | 154661935 | 154660035 | 154661035 | 154660135 | 154661135 |
| 40 | 154660240 | 154661240 | 154660340 | 154661340 | 154660440 | 154661440 | 154660540 | 154661540 | 154660640 | 154661640 | 154660740 | 154661740 | 154660840 | 154661840 | 154660940 | 154661940 | 154660040 | 154661040 | 154660140 | 154661140 |
| 45 | 154660245 | 154661245 | 154660345 | 154661345 | 154660445 | 154661445 | 154660545 | 154661545 | 154660645 | 154661645 | 154660745 | 154661745 | 154660845 | 154661845 | 154660945 | 154661945 | 154660045 | 154661045 | 154660145 | 154661145 |
| 50 | 154660250 | 154661250 | 154660350 | 154661350 | 154660450 | 154661450 | 154660550 | 154661550 | 154660650 | 154661650 | 154660750 | 154661750 | 154660850 | 154661850 | 154660950 | 154661950 | 154660050 | 154661050 | 154660150 | 154661150 |



- NOTES:**
- NO PRINTING ON JUMPER CABLE UNLESS OTHERWISE SPECIFIED. IF PRINTING IS REQUIRED, THEN IT WOULD BE CONSIDERED A SPECIAL JUMPER CABLE.
 - CABLES MATE WITH MOLEX FFC/FPC CONNECTOR SERIES # 505278
 - CONDUCTOR IS 0.1 MM COPPER THICKNESS
 - SURFACE FINISH: 0.4 um Sn



| | | | | | | | | | | |
|--------------------|---|-------|---|--|------------------------|--|------------|--|-----------------|--|
| FUNCTIONAL SYMBOLS | THIS DRAWING CONTAINS INFORMATION THAT IS PROPRIETARY TO MOLEX ELECTRONIC TECHNOLOGIES, LLC AND SHOULD NOT BE USED WITHOUT WRITTEN PERMISSION | | | | | | | | | |
| FA=0 | DIMENSION UNITS | SCALE | CURRENT REV DESC: DRAWING CORRECTION | | | | | | | |
| FE=0 | MM | 2:1 | molex 0.50MM CENTER FFC TIN PLATED WEARS FFC JUMPER CABLE (105°C, SN PLATED) CHART | | | | | | | |
| FP=0 | GENERAL TOLERANCES (UNLESS SPECIFIED) | | | | | | | | | |
| DIVISIONAL SYMBOLS | mm | INCH | EC NO: 728054 | | DRWN: DIEGOG7 | | 2022/11/10 | | 2022/11/14 | |
| 4 PLACES | ±---- | ±---- | CHK'D: JSMITH11 | | APPR: JSMITH11 | | 2022/11/14 | | 2022/11/14 | |
| 3 PLACES | ±---- | ±---- | INITIAL REVISION: | | DRWN: DIEGOG7 | | 2022/05/19 | | 2022/06/06 | |
| 2 PLACES | ±---- | ±---- | APPR: JSMITH11 | | DRWN: DIEGOG7 | | 2022/05/19 | | 2022/06/06 | |
| 1 PLACE | ±---- | ±---- | ANGULAR TOL ± 0.5 ° | | THIRD ANGLE PROJECTION | | DRAWING | | SERIES | |
| 0 PLACES | ±---- | ±---- | DRAFT WHERE APPLICABLE MUST REMAIN WITHIN DIMENSIONS | | C-SIZE | | 15466 | | MATERIAL NUMBER | |
| | | | | | | | | | CUSTOMER | |
| | | | | | | | | | SHEET NUMBER | |
| | | | | | | | | | 1 OF 1 | |