

Main Features

- Intel® Celeron® processor, Bay Trail J1900
- 2 x I210 LAN port for EtherCAT communication
- Encoder, D/I, D/O , MPG support
- 2x Mechatrolink III support

Product Overview

MCB355 is an Ether CAT/Mechatrolink hybrid mainboard. MCB355 equip rich I/O for CNC control application such as 2x I210 LAN port for Ether CAT communication, 2 x Mechatrolink, 1x VGA port, 2x LVDS 8bit signal channel, 1x (1x4) pin for resistive touch panel and 1x 3-pin for SMBus. MCB 355 also comes with Edge I/O Interface and FPGA I/O control Interface.

Specifications

CPU / Chipset

- Intel® Celeron® processor, Bay Trail J1900, 2.0GHz, 4-core processor.

Main Memory

- 1x 204-pin SO-DIMM DDR3L-1333MHz 4GB Max.

On Board Interface

- 1x (2X8) pin box header for VGA(1920 X 1200)
- 1x LVDS Dual channel 18/24bit
- 1x (1x4) pin for resistive touch panel
- 1x 3-pin for SMBus

FPGA I/O Control Interface

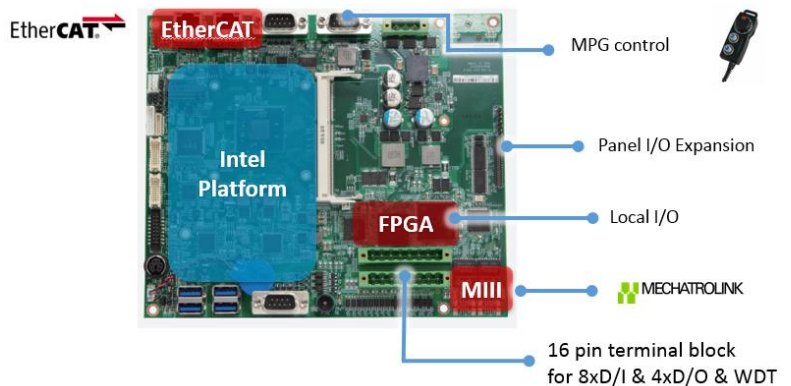
- 1 x DB9 for MPG control
- 2 x 8pin terminal block for 4xD/O & 8xD/I & WDT
- 1x (2x22) pin pin header for panel I/O
- 2x TE 197188501 for Mechatrolink III JL-101A

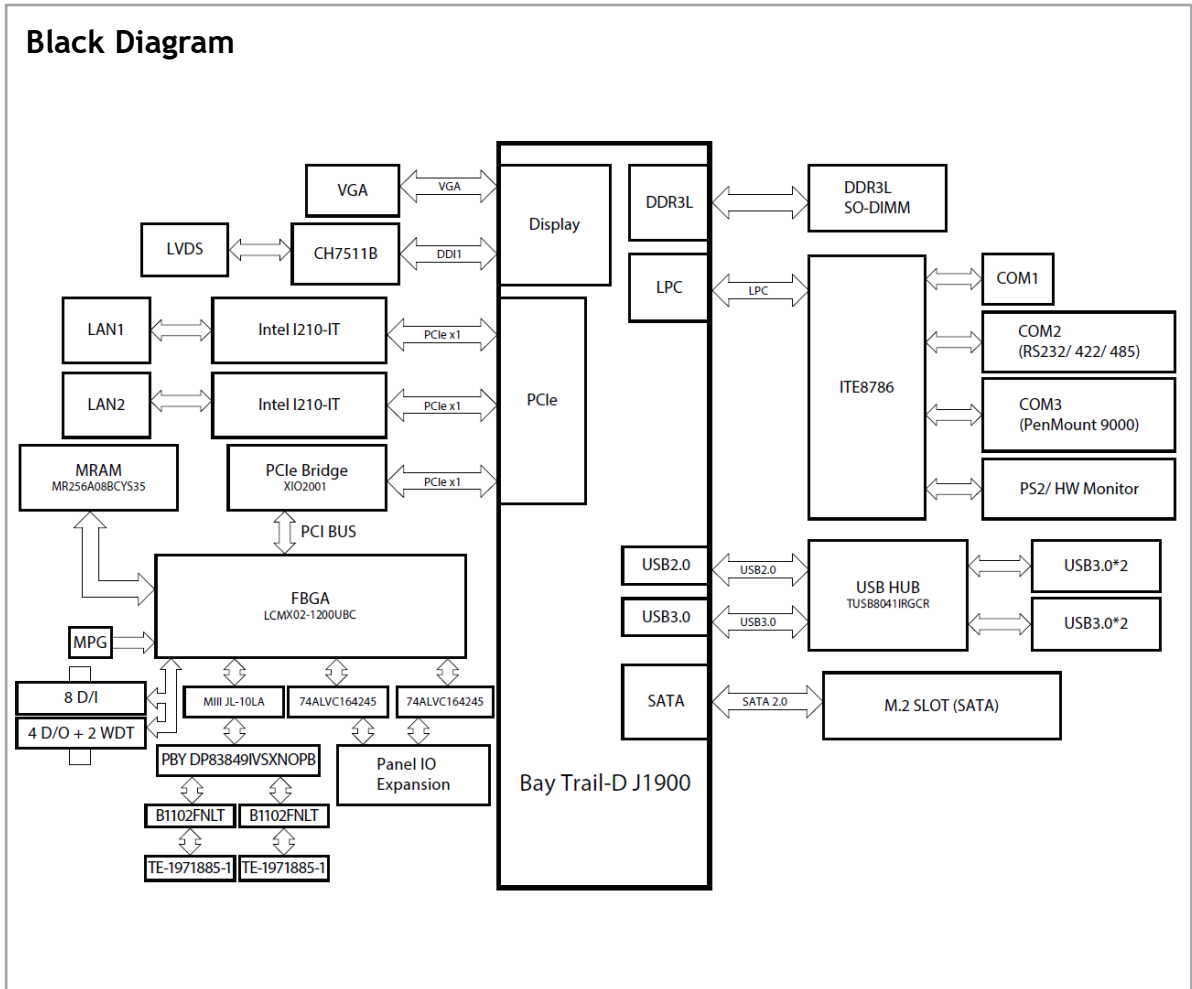
Storage

- 1x M.2 22x80, SATA 2.0 signal

Rear I/O

- 2x RJ45 for I210 GbE LAN
- 1x DB9 for RS232
- 1x DB9 for RS232/RS422/RS485
- 4x USB3.0
- 1x PS2 for Keyboard/Mouse
- 2x Mechatrolink (MIII)





Power Input

- 1x 3-pin terminal block
- DC 24V input
- Support AT/ATX mode, AT mode default

Power Output

- 1x 4-pin for DC12V/1A output
- Pin define: 12V/12V/GND/GND

Form Factor

- Dimensions: 200mm x 170mm

Environment

- Operating temperatures: -10°C to 60°C
- Storage temperature: -20°C to 85°C
- Relative humidity:
 - Operating 10% to 90%, non-condensing
 - Non-operating 5% to 95%, non-condensing

Certifications

- CE
- FCC Class A

Ordering Information

Barebone

- MCB355 (P/N: 6879MB350000F)
Intel® J1900 Ether CAT/ Mechatrolink hybrid mainboard

- MCB355-E (P/N: 6879MB35E001F)
Intel® J1900 Ether CAT mainboard