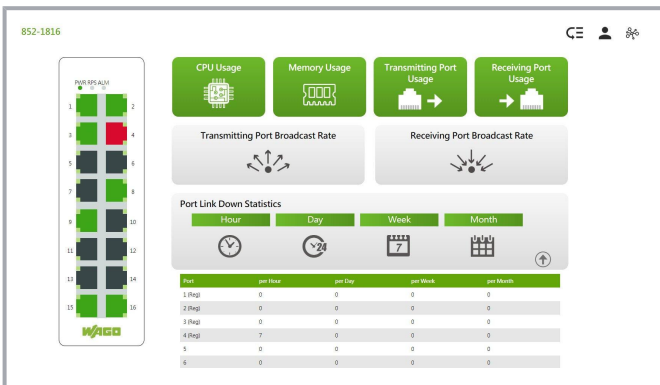
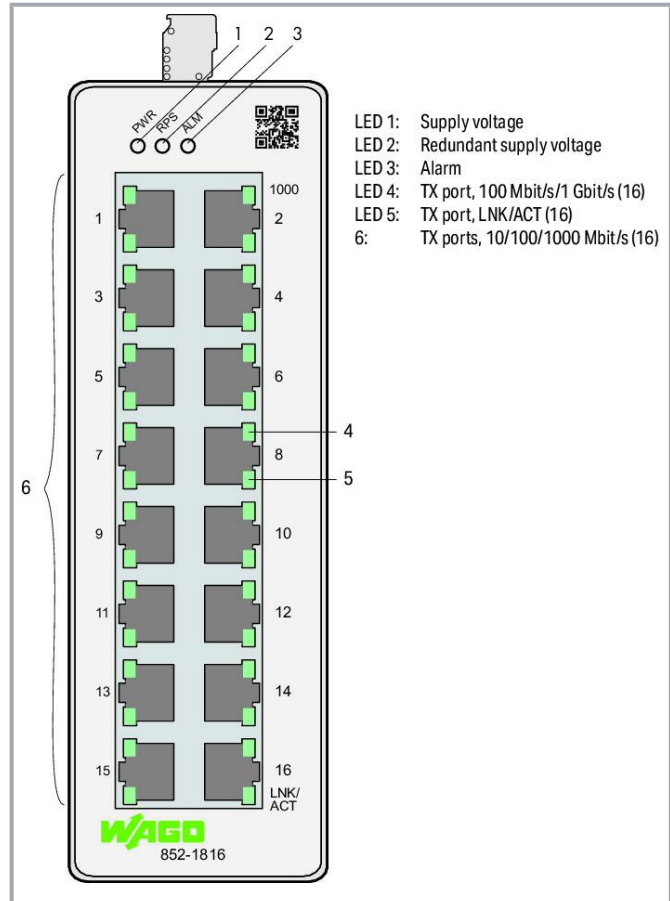


Data sheet | Item number: 852-1816  
 Lean Managed Switch; 16 Ports 1000Base-T

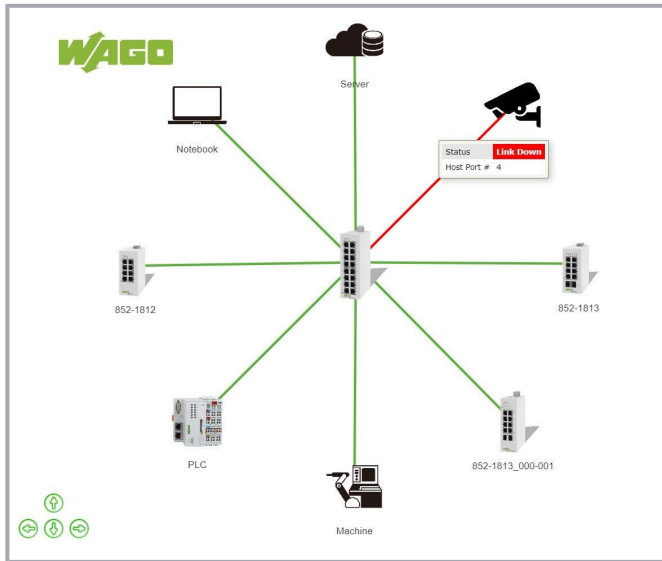
[www.wago.com/852-1816](http://www.wago.com/852-1816)



Subject to changes. Please also observe the further product documentation!

WAGO GmbH & Co. KG  
 Hansastr. 27  
 32423 Minden  
 Phone: +49571 887-0 | Fax: +49571 887-169  
 Email: [info.de@wago.com](mailto:info.de@wago.com) | Web: [www.wago.com](http://www.wago.com)

Do you have any questions about our products?  
 We are always happy to take your call at +49 (571) 887-44222.



**Successor model**



**Item no.852-1816/010-000**  
Lean Managed Switch; 16 Ports 1000Base-T; light gray

[www.wago.com/852-1816/010-000](http://www.wago.com/852-1816/010-000)

**Item description**

The configurable 852-1816 Industrial ETHERNET Switch is equipped with 16 10/100/1000BASE-T ports. Packaged in rugged housing, this switch offers both a redundant power supply and relay-based function monitoring. This device also streamlines network management: Commissioning and diagnostics are intuitive and can be performed without extensive IT knowledge. The topology map clearly displays the switch and connected devices. Key diagnostic information is displayed on the diagnostics dashboard. The following functions increase the robustness, availability and security of the network.

**Security:**

Network segmentation per IEEE802.1Q (max. 5 VLANs), authentication of network participants per IEEE802.1X, firewall functions using access-control list (max. 32 entries)/service control, port security

**Availability:**

Rapid Spanning Tree Protocol (RSTP) for meshed and ring networks, ETHERNET Ring Protection Switching (ERPS) for up to two rings per switch, loop detection and storm control on each port

**Configuration/Diagnostics/Maintenance:**

Port mirroring, Modbus® registers, SNMP v3, SNMP trap events, alarm threshold, port statistics, backup and restore, system log, syslog server, command line interface with SSH/Telnet, topology map and dashboard

**Data**

**Technical data**

Switching mode	Store-and-forward; non-blocking
Number of 1 Gbit/s ports	16

Subject to changes. Please also observe the further product documentation!

WAGO GmbH & Co. KG  
Hansastr. 27  
32423 Minden  
Phone: +49571 887-0 | Fax: +49571 887-169  
Email: [info.de@wago.com](mailto:info.de@wago.com) | Web: [www.wago.com](http://www.wago.com)

Do you have any questions about our products?  
We are always happy to take your call at +49 (571) 887-44222.



Communication standards	IEEE 802.3 10BASE-T IEEE 802.3u 100BASE-TX/FX IEEE 802.3ab 1000BASE-T IEEE 802.3x Flow Control IEEE 802.1d Spanning Tree Protocol (STP) IEEE 802.1w Rapid Spanning Tree Protocol (RSTP) IEEE 802.1Q VLAN Tagging IEEE 802.1p Prioritization IEEE 802.1x Port Authentication IEEE 802.1ab Link Layer Discovery Protocol (LLDP) IEEE 802.3az Energy Efficient Ethernet ITU-T G8032v1/v2 Ethernet Ring Protection Switching (ERPS)
Redundancy function	Redundant DC power supply; STP; RSTP; ERPSv1/v2 (max. 2 rings per switch, max. 16 switches per ring, switching time < 800 ms)
Configuration options	DIP switch for signal contact Web-Based Management Command Line Interface SNMPv1/v2c/v3
Diagnostics	Signal contact; Modbus TCP; port status; port statistics; port load; traffic monitor; syslog; SNMP traps; loop detection; diagnostics dashboard; topology map
Safety	Access-control list with max. 32 entries; port security; IEEE 802.1X authentication
MAC table (size)	8000 addresses
Jumbo frame size	10000. Byte
Supply voltage	12 ... 60 VDC
Power consumption (max.)	12 W
ESD (contact/air discharge)	8 KV / 15 KV
Baud rate	Copper cable: 10/1000 Mbit/s
VLAN	Port-based and tag-based (max. 5 VLANs)

## Connection data

Connection technology: communication/fieldbus	Copper cable: 16 x RJ-45
---	--------------------------

## Physical data

Width	50 mm / 1.969 inches
Height	160 mm / 6.299 inches
Depth	120 mm / 4.724 inches

## Mechanical Data

Weight	840 g
--------	-------

Subject to changes. Please also observe the further product documentation!

Conformity marking	CE
--------------------	----

### Environmental requirements

Ambient temperature (operation)	-40 ... +60 °C
Ambient temperature (storage)	-40 ... +85 °C
Protection type	IP30
Relative humidity (without condensation)	95 %
Mounting type	DIN-35 rail
Vibration resistance	per IEC 60068-2-6
Shock resistance	per IEC 60068-2-27
EMC immunity to interference	per EN 61000-6-2
EMC emission of interference	per EN 61000-6-4

### Commercial data




ETIM 8.0	EC000734
ETIM 7.0	EC000734
PU (SPU)	1 pcs
Country of origin	TW
GTIN	4066966072969
Customs tariff number	85176200000

### Environmental Product Compliance

RoHS Compliance Status	Compliant, No Exemption
------------------------	-------------------------


### Approvals / Certificates

#### General approvals

Logo	Approval	Additional Approval Text	Certificate name
	EAC Brjansker Zertifizierungsstelle	TP TC 020/2011	EAC RU C-DE.AM02.B.00087/19
	KC National Radio Research Agency	Article 58-2, Clause 3	MSIP-REM-W43-ISW852
	UL Underwriters Laboratories Inc. (ORDINARY LOCATIONS)	UL 61010-2-201	E175199

Subject to changes. Please also observe the further product documentation!

## Declarations of conformity and manufacturer's declarations

Logo	Approval	Additional Approval Text	Certificate name
	EU-Declaration of Conformity WAGO GmbH & Co. KG	-	-

## Downloads

## Documentation

## Manual

Product Manual Lean Managed Switch 16 Ports 1000BASE-T	V 1.0.0 2020 Sep 23	pdf 8.2 MB	Download
---	------------------------	---------------	----------

## Bid Text

<a href="http://ausschreiben.de/852-1816">ausschreiben.de 852-1816</a>		URL	Download
--	--	-----	----------

## Runtime Software

## Firmware

0852-1816, Lean-Managed-Switch WAGO_FW0852-1816_V010200S0_IX03	V 03 2022 Nov 22	zip 10.2 MB	Download
---	---------------------	----------------	----------

## CAD/CAE-Data

## CAD data

2D/3D Models 852-1816		URL	Download
-----------------------	--	-----	----------

## CAE data

ZUKEN Portal 852-1816		URL	Download
-----------------------	--	-----	----------

EPLAN Data Portal 852-1816		URL	Download
----------------------------	--	-----	----------

## Environmental Product Compliance

Subject to changes. Please also observe the further product documentation!

WAGO GmbH & Co. KG  
 Hansastr. 27  
 32423 Minden  
 Phone: +49571 887-0 | Fax: +49571 887-169  
 Email: [info.de@wago.com](mailto:info.de@wago.com) | Web: [www.wago.com](http://www.wago.com)

Do you have any questions about our products?  
 We are always happy to take your call at +49 (571) 887-44222.



### Compliance Search

Environmental Product Compliance 852-1816

URL

Download

Lean Managed Switch; 16 Ports 1000Base-T

---

### Installation Notes

Subject to changes. Please also observe the further product documentation!

---

WAGO GmbH & Co. KG

Hansastr. 27

32423 Minden

Phone: +49571 887-0 | Fax: +49571 887-169

Email: [info.de@wago.com](mailto:info.de@wago.com) | Web: [www.wago.com](http://www.wago.com)

Do you have any questions about our products?

We are always happy to take your call at +49 (571) 887-44222.