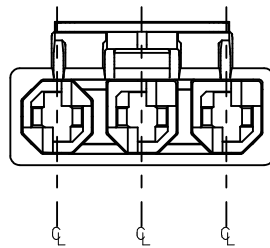
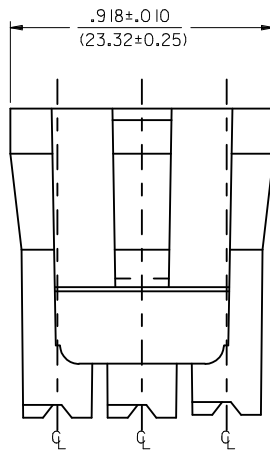
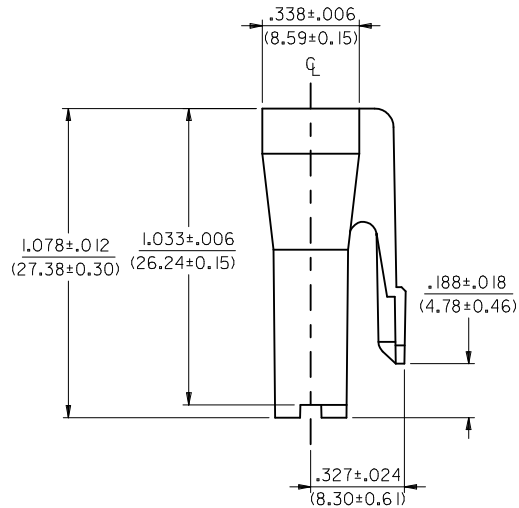


43335-5023
(POSITIONED TO SHOW THE MATING END)



NOTES:

1. MATERIAL: 6/6 NYLON, UL 94V-2, COLOR: BLACK.
2. FINISH: NONE
3. SEE PSX-43335-9999 FOR APPLICABLE SPECIFICATIONS.
4. THIS CONNECTOR HOUSING FOR USE WITH 43375-**** TERMINALS.
5. SEE SDES-43335-9002 FOR REQUIREMENTS FOR MATING INTERFACE.
6. PARTS CONFORM TO CLASS 'B' REQUIREMENTS OF COSMETIC SPECIFICATION PS-45499-002.

CORRECT TOLERANCE EC NO: UCP2014-5424 DRWN: JDFOX 2014/06/26 CHKD: BANDERSON 2014/06/26 APPR: FSM/TH 2014/07/09	QUALITY SYMBOLS ∇=0 ∇=0 ∇=0	GENERAL TOLERANCES (UNLESS SPECIFIED)		DIMENSION STYLE		SCALE	DESIGN UNITS	THIRD ANGLE PROJECTION		
		mm	INCH	IN/MM		3:1	INCH			
		4 PLACES ± ---	± ---	DRAWN BY		DATE	TITLE 3 CKT RECEPTACLE HOUSING .125X.020 FLAT BLADE SYSTEM W/TPA			
		3 PLACES ± ---	± ---	KBP		12/16/97				
2 PLACES ± ---	± ---	CHECKED BY		DATE	molex MATERIAL NO. 43335-5023 DOCUMENT NO. SD-43335-5023 SHEET NO. 1 OF 1					
1 PLACE ± ---	± ---	KBP		12/16/97						
0 PLACE ± ---	± ---	APPROVED BY		DATE						
		JC		12/16/97						
ANGULAR ±1/2°		DRAFT WHERE APPLICABLE MUST REMAIN WITHIN DIMENSIONS		SIZE C		THIS DRAWING CONTAINS INFORMATION THAT IS PROPRIETARY TO MOLEX INCORPORATED AND SHOULD NOT BE USED WITHOUT WRITTEN PERMISSION				