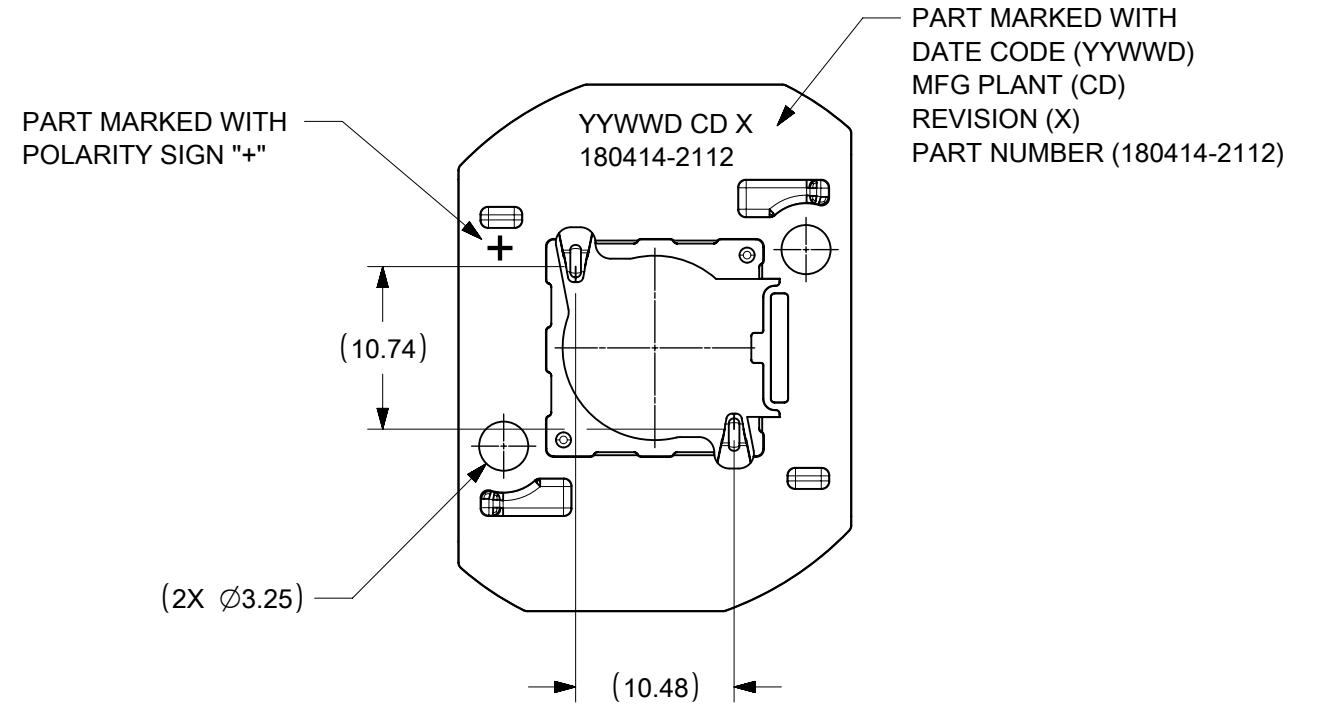
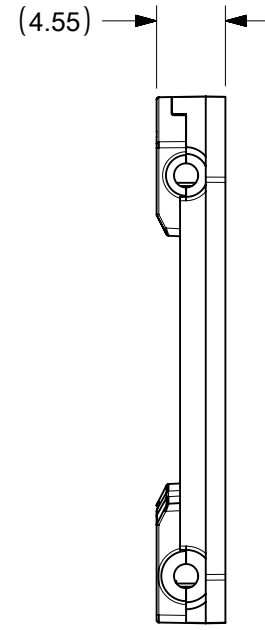
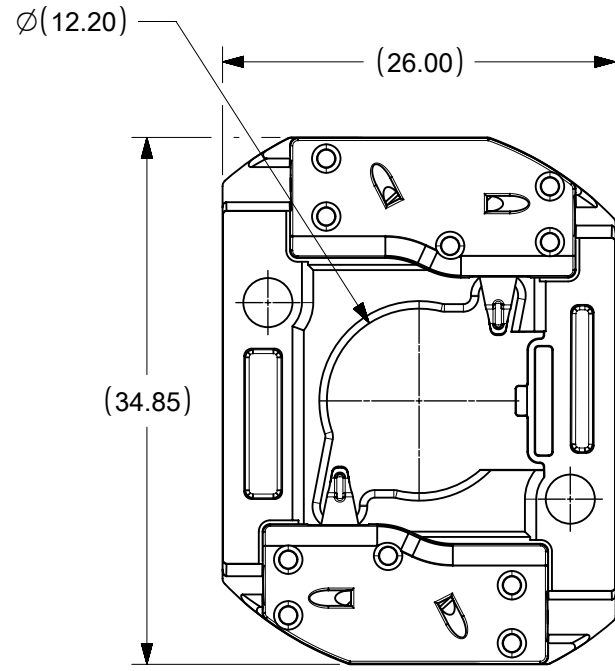


| | | | | | | | | | |
|-------------|-------------------------|--------------|-------------|-------------|-------------|---|---|---|---|
| 10 | 9 | 8 | 7 | 6 | 5 | 4 | 3 | 2 | 1 |
| PART NUMBER | DESCRIPTION | POCKET DEPTH | HOUSING | TERMINAL | CAP | | | | |
| 180414-2112 | COB LED HOLDER ASSEMBLY | 0.75 | 180413-2112 | 180155-0133 | 180154-0105 | | | | |

P/N 180414-2112 HOLDER ASSEMBLY (0.75 POCKET DEPTH)

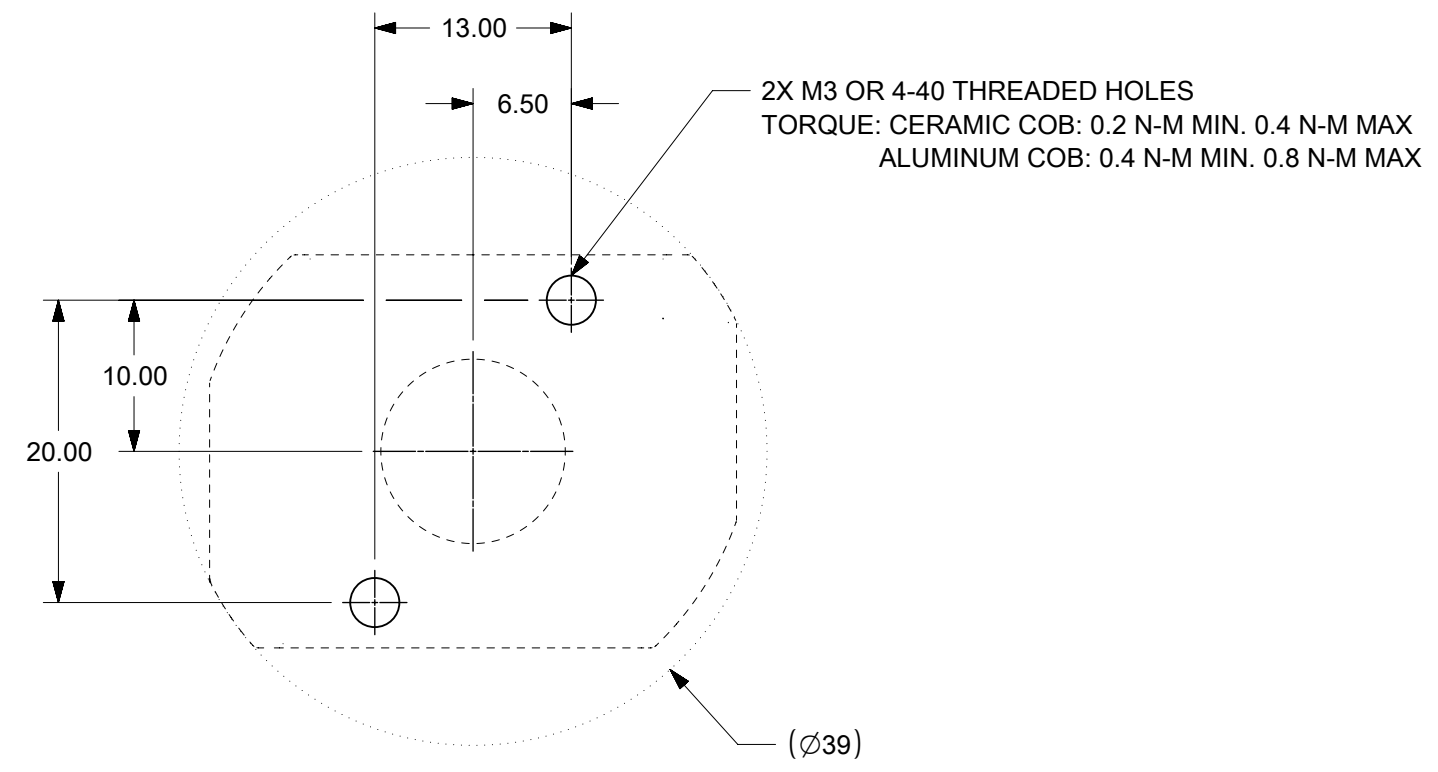


NOTES:

1. MATERIALS: HOUSING AND CAPS: POLYESTER PBT GLASS FILLED; COLOR: WHITE; TERMINAL: COPPER ALLOY
2. FINISHES: TERMINAL CONTACT: SELECT GOLD OVER NICKEL
WIRE TRAP: SELECT TIN OVER NICKEL
3. PRODUCT SPECIFICATION: 180414-0000-PS
4. PACKAGING SPECIFICATION: PK-180419-005
5. UL:OLFB2 UL496 FILE NO. E345583
6. ELV AND ROHS COMPLIANT
7. FOR USE WITH: 13.5 MM X 13.5 MM COB LED
8. WIRE GAUGE: 18, 20, AND 22 AWG, SOLID OR STRANDED WITH TIN OVERCOAT. STRIP LENGTH 10MM +2.0/-0.0MM.
9. ALL DIMENSIONS IN PARENTHESES (XX.XX) ARE FOR REFERENCE ONLY

| | | | | | | | | | |
|---|--|--------|--|------------------------|--|------------|--|--------------------------|--|
| THIS DRAWING CONTAINS INFORMATION THAT IS PROPRIETARY TO MOLEX ELECTRONIC TECHNOLOGIES, LLC AND SHOULD NOT BE USED WITHOUT WRITTEN PERMISSION | | | | | | | | | |
| DIMENSION UNITS | | SCALE | | CURRENT REV DESC: | | | | molex | |
| mm | | 2:1 | | EC NO: 624787 | | | | | |
| GENERAL TOLERANCES (UNLESS SPECIFIED) | | | | DRWN: VLOKESHA | | 2019/06/13 | | COB LED HOLDER ASSEMBLY | |
| 4 PLACES | | ± | | CHK'D: GGA | | 2019/11/11 | | 13.5 MM X 13.5 MM SQUARE | |
| 3 PLACES | | ± | | APPR: GGA | | 2019/11/11 | | PRODUCT CUSTOMER DRAWING | |
| 2 PLACES | | ± 0.13 | | INITIAL REVISION: | | | | DOCUMENT NUMBER | |
| 1 PLACE | | ± 0.25 | | DRWN: MCOLE | | 2013/12/09 | | SD-180414-112 | |
| 0 PLACES | | ± | | APPR: DMCGOWAN | | 2013/12/09 | | PSD 001 C5 | |
| ANGULAR TOL ± 0.5° | | | | THIRD ANGLE PROJECTION | | DRAWING | | SERIES | |
| DRAFT WHERE APPLICABLE MUST REMAIN WITHIN DIMENSIONS | | | | B-SIZE | | 180414 | | MATERIAL NUMBER | |
| | | | | SEE CHART | | CUSTOMER | | SHEET NUMBER | |
| | | | | GENERAL MARKET | | | | 1 OF 3 | |

| | | | | |
|-----------------|----|--------------|------------|----------|
| DOCUMENT STATUS | P1 | RELEASE DATE | 2019/11/11 | 02:36:40 |
|-----------------|----|--------------|------------|----------|

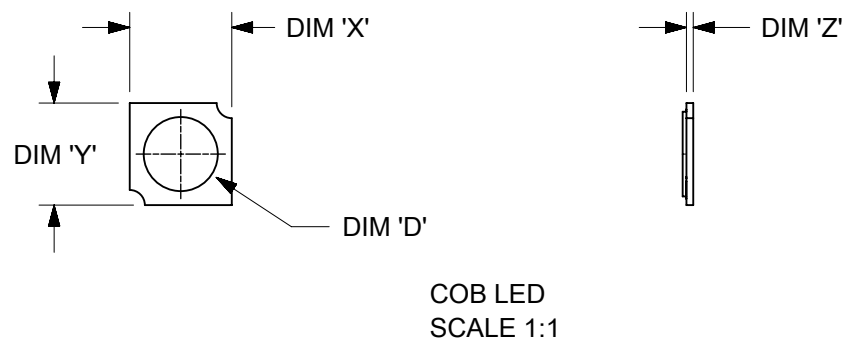
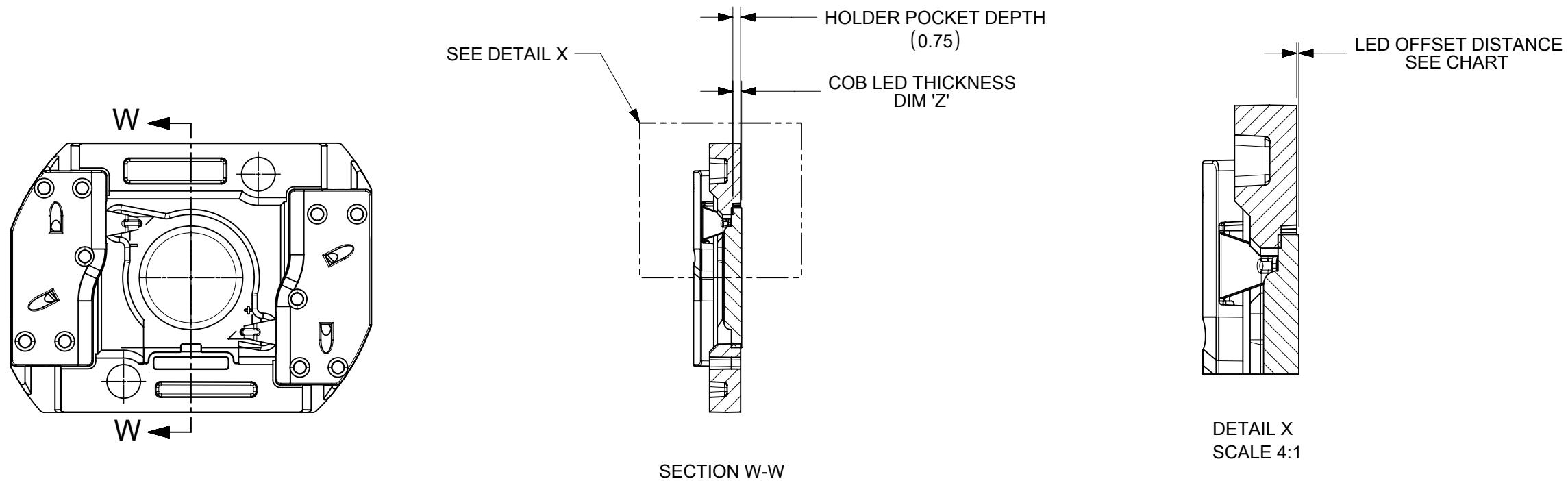


RECOMMENDED MOUNTING DIMENSIONS

| | | | | | | | | | |
|---|--|------------------------|------|-------------------|--|------------|--|--------------------------|--|
| THIS DRAWING CONTAINS INFORMATION THAT IS PROPRIETARY TO MOLEX ELECTRONIC TECHNOLOGIES, LLC AND SHOULD NOT BE USED WITHOUT WRITTEN PERMISSION | | | | | | | | | |
| DIMENSION UNITS | | SCALE | | CURRENT REV DESC: | | | | molex | |
| mm | | 2:1 | | EC NO: 624787 | | | | | |
| GENERAL TOLERANCES (UNLESS SPECIFIED) | | | | DRWN: VLOKESHA | | 2019/06/13 | | COB LED HOLDER ASSEMBLY | |
| | | MM | INCH | CHK'D: GGA | | 2019/11/11 | | 13.5 MM X 13.5 MM SQUARE | |
| 4 PLACES | | ± | ± | APPR: GGA | | 2019/11/11 | | PRODUCT CUSTOMER DRAWING | |
| 3 PLACES | | ± | ± | INITIAL REVISION: | | | | DOCUMENT NUMBER | |
| 2 PLACES | | ± 0.13 | ± | DRWN: MCOLE | | 2013/12/09 | | SD-180414-112 | |
| 1 PLACE | | ± 0.25 | ± | APPR: DMCGOWAN | | 2013/12/09 | | PSD 001 C5 | |
| 0 PLACES | | ± | ± | ANGULAR TOL | | ± 0.5 ° | | MATERIAL NUMBER | |
| DRAFT WHERE APPLICABLE MUST REMAIN WITHIN DIMENSIONS | | THIRD ANGLE PROJECTION | | DRAWING | | SERIES | | CUSTOMER | |
| | | | | B-SIZE | | 180414 | | SEE SHEET 1 | |
| | | | | | | | | GENERAL MARKET | |
| | | | | | | | | SHEET NUMBER | |
| | | | | | | | | 2 OF 3 | |

| | 10 | 9 | 8 | 7 | 6 | 5 | 4 | 3 | 2 | 1 |
|---|-----------------|--|---|---|---------|---------|---------|---------|--------|---|
| | COB MFG | TYPE | | | DIM 'X' | DIM 'Y' | DIM 'Z' | DIM 'D' | OFFSET | |
| F | CITIZEN | CLL020, CLL022, CLU024, CLU026, CLU028 | | | 13.5 | 13.5 | 0.90 | 11.2 | 0.15 | |
| | SEOUL | ZC6 | | | 13.5 | 13.5 | 0.90 | 10.0 | 0.15 | |
| | TRIDONIC | SLE G5 LES10 | | | 13.5 | 13.5 | 0.90 | 9.4 | 0.15 | |
| | CITIZEN | CLU025, CLU027 | | | 13.5 | 13.5 | 0.90 | 7.4 | 0.15 | |
| | CITIZEN | CLU700, CLU701 | | | 13.5 | 13.5 | 0.90 | 7.8 | 0.15 | |
| | EVERLIGHT | EAHP1313WA*, EAHP1313WB*, EAHP1313WC* | | | 13.5 | 13.5 | 0.90 | 10.8 | 0.15 | |
| E | EVERLIGHT | EA1313 36V/3W | | | 13.5 | 13.5 | 0.90 | 10.8 | 0.15 | |
| | EVERLIGHT | EA1313 36V/6W | | | 13.5 | 13.5 | 0.90 | 10.8 | 0.15 | |
| | EVERLIGHT | EA1313 36V/10W | | | 13.5 | 13.5 | 0.90 | 10.8 | 0.15 | |
| | EVERLIGHT | EA1313 36V/13W | | | 13.5 | 13.5 | 0.90 | 10.8 | 0.15 | |
| | VOSSLOH-SCHWABE | DMC122C | | | 13.5 | 13.5 | 1.00 | 10.0 | 0.25 | |

ILLUSTRATION OF P/N 180414-2112 HOLDER MATED WITH LED



| | | | | | | | | | |
|---|--------|-------|--|---|------------|---|-------------|----------------|--------|
| THIS DRAWING CONTAINS INFORMATION THAT IS PROPRIETARY TO MOLEX ELECTRONIC TECHNOLOGIES, LLC AND SHOULD NOT BE USED WITHOUT WRITTEN PERMISSION | | | | | | | | | |
| DIMENSION UNITS | | SCALE | | CURRENT REV DESC: | | | | | |
| mm | | 2:1 | | molex COB LED HOLDER ASSEMBLY 13.5 MM X 13.5 MM SQUARE PRODUCT CUSTOMER DRAWING | | | | | |
| GENERAL TOLERANCES (UNLESS SPECIFIED) | | | | | | | | | |
| | MM | INCH | | | | | | | |
| 4 PLACES | ± | | | | | | | | |
| 3 PLACES | ± | | | | | | | | |
| 2 PLACES | ± 0.13 | | | EC NO: 624787 | 2019/06/13 | DOCUMENT NUMBER: SD-180414-112 DOC TYPE: PSD DOC PART: 001 REVISION: C5 | | | |
| 1 PLACE | ± 0.25 | | | DRWN: VLOKESHA | 2019/11/11 | | | | |
| 0 PLACES | ± | | | CHK'D: GGA | 2019/11/11 | | | | |
| ANGULAR TOL ± 0.5° | | | | APPR: GGA | 2019/11/11 | INITIAL REVISION: DRWN: MCOLE 2013/12/09 APPR: DMCGOWAN 2013/12/09 | | | |
| DRAFT WHERE APPLICABLE MUST REMAIN WITHIN DIMENSIONS | | | | THIRD ANGLE PROJECTION | DRAWING | | | | |
| | | | | | B-SIZE | 180414 | SEE SHEET 1 | GENERAL MARKET | 3 OF 3 |