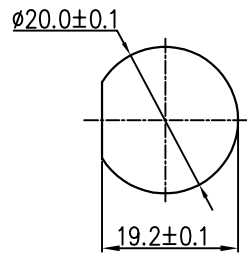
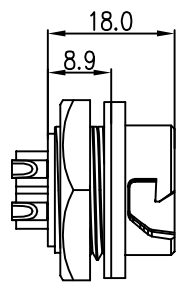


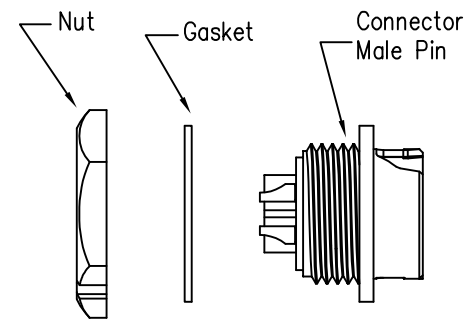
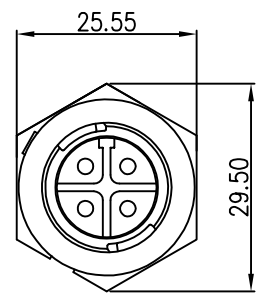
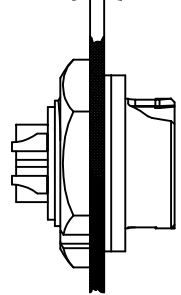
REV.	ECN NO.	DESCRIPTION	SIGN	DATE
C1	N/A	INITIAL DRAWING	Liu	2020/05/16



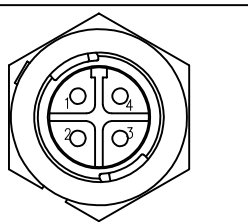
Recommended Panel Cut-Out



Panel T: Max 2.5



23XXX535-03  
Pin Number



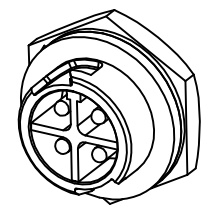
4 Pin

P/N: 23004535-03

Pin Assignments  
Front View

Specification:

- 1.Operation Temperature: -45°C~105°C.
- 2.Insulation Resistance:100MΩ at DC500V.
- 3.Contact Resistance:<10mΩ.
- 4.Withstand Voltage: 2000V AC
- 5.Operating Current:15A
- 6.Operating Voltage:AC 300V
- 7.Waterproof Rate:IP67 (Mated)
- 8.Housing:Nylon, Black
- 9.Male Pin:Copper Alloy, Gold Plated
- 10.Gasket:Silicon Gray
- 11.Panel Nut:Nylon, Orange
- 12.Torque Rate:0.8~1.0N·m
- 13.RoHS Compliant.
- 14.Mating Cap P/N:806-00103-00



**CHOGORI**

UNIT:mm	DESCRIPTION	PART NO	DRAWN BY	DATE
	Middle Series Push Lock Rear Mount With Male Pin	23004535-03	Liu	2020/05/16
TOLERANCE .X ±0.25 .XX ±0.15 .XXX ±0.05 ANGLES ±1°	SCALE: 1:1 SHEET 1 OF 1	DWG NO	CHECKED BY	DATE
	REV. C1 SIZE A4 * :Inspection Item	CUSTOMER	Mo	2020/05/16
			APPROVED BY	DATE
			Adley	2020/05/16

THIS INFORMATION IS CONFIDENTIAL AND IS DISCLOSED TO YOU ON CONDITION THAT NO FURTHER DISCLOSURE IS MADE BY YOU TO OTHER THAN CHOGORI PERSONNEL WITHOUT AUTHORIZATION FROM CHOGORI CORP.