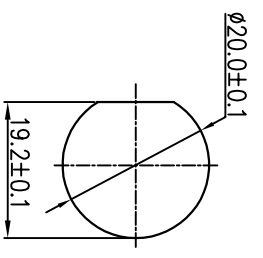
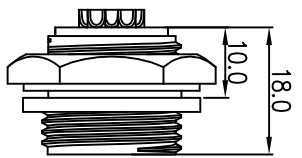


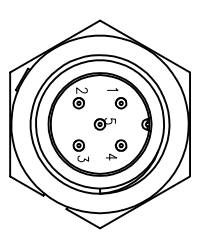
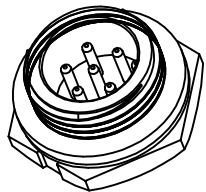
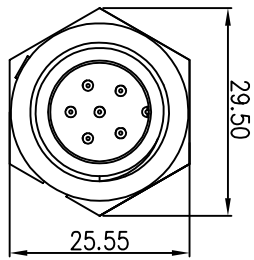
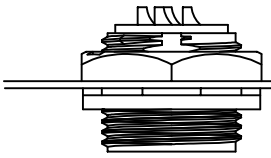
REV.	EON NO.	DESCRIPTION	SIGN	DATE
C1	N/A	INITIAL DRAWING	Liu	2020/05/16



Recommended Panel Cut-Out

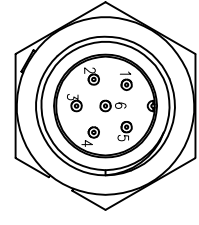


Panel T: Max 3.5mm



5 Pin

P/N: 23005515-03



6 Pin

P/N: 23006515-03

Pin Assignments Front View

UNIT: mm

TOLERANCE	±0.25
.X	±0.15
.XX	±0.05
.XXX	±0.05
ANGLES	±1°

DESCRIPTION			
Middle Series Screw Type Rear Mount With Male Pin			
SCALE:	1:1	SHEET	1 OF 1
REV:	C1	SIZE	A4
* : Inspection Item			

CHOGORI

PART NO	23XXX515-03	DRAWN BY	Liu	DATE	2020/05/16
DWG NO		CHECKED BY	Mo	DATE	2020/05/16
CUSTOMER		APPROVED BY	Adley	DATE	2020/05/16

- Specification:
- 1.Operation Temperature: -45°C~105°C.
 - 2.Insulation Resistance:100MΩ at DC500V.
 - 3.Contact Resistance:<10mΩ.
 - 4.Withstand Voltage: 1500V AC
 - 5.Operating Current:10A
 - 6.Operating Voltage: AC 125V
 - 7.Waterproof Rate:IP67 (Mated)
 - 8.Housing: Nylon, Black
 - 9.Male Pin:Copper Alloy, Gold Plated
 - 10.Gasket:Silicon Gray
 - 11.Panel Nut:Nylon, Black
 - 12.Torque Rate:0.8~1.0N • m
 - 13.RoHS Compliant.
 - 14.UL Compliant.
 - 15.Mating Cap P/N: 806-00021-00

