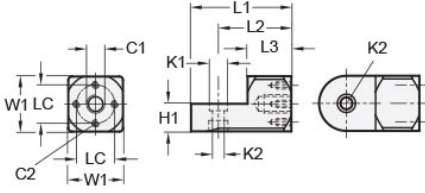
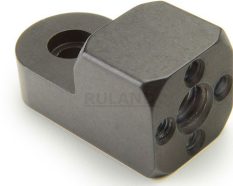




MT10:12-SWMB-M8-AN

Ruland Swivel Mounting Block, Width/Height 20mm, Length 38mm, Black Anodized Aluminum



Description

Ruland MT10:12-SWMB-M8-AN is an swivel mounting block with a M8 center thread, M4 cross threads, 10mm base height, 8.5mm recess diameter, 20mm width/height, and 38mm overall length. It is made of aluminum with a black anodized finish. Swivel mounting blocks are primarily designed to mount sensor and mounting brackets with the same width/height. In addition, this part can be combined with swivel and t-swivel clamp joints with the same width/height to make articulated swivel clamp mounting joints. Adjustable lever clamping kits with the same width/height can be attached to the swivel mounting block.

Product Specifications

| | | | |
|----------------------------------|-------------------|---|-----------------------|
| Center Thread C1 | M8 | Cross Thread C2 | M4 x 4 |
| Counterbore 1 Diameter K1 | 8.5 mm | Counterbore 2 Diameter K2 | 5.5 mm |
| Width & Height W1 | 20 mm | Base Height H1 | 10 mm |
| Center To Center LC | 14 mm | Edge To Center Of Counterbore L2 | 28 mm |
| Overall Length L1 | 38 mm | Hub Length LH | 17 mm |
| Material Specification | Anodized Aluminum | Manufacturer | JW Winco/ Otto Ganter |
| Country of Origin | Germany | Weight (lbs) | 0.051400 |
| UPC | 634529230022 | Tariff Code | 7609.00.0000 |
| UNSPC | 31162908 | | |