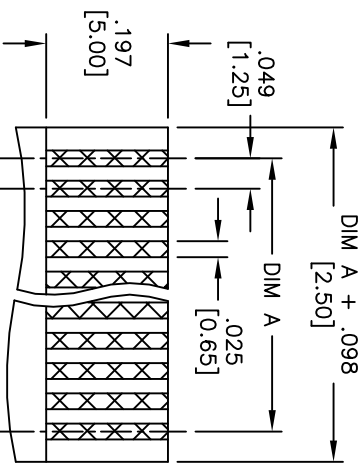
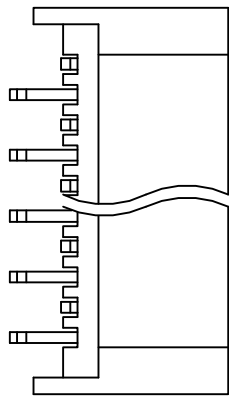
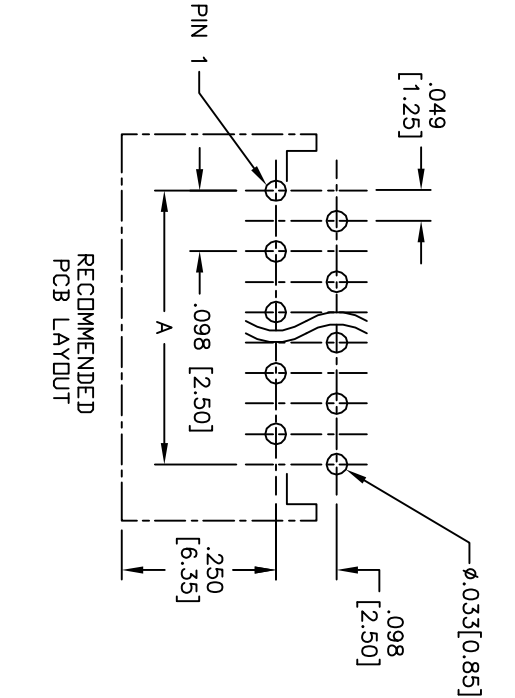
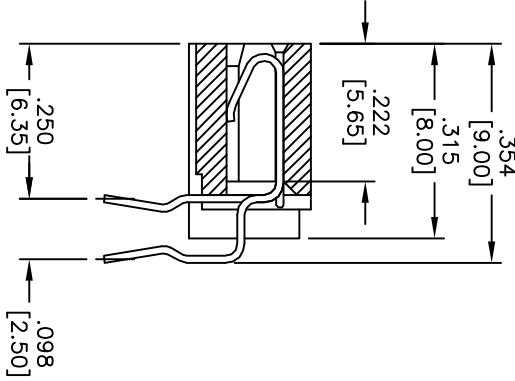
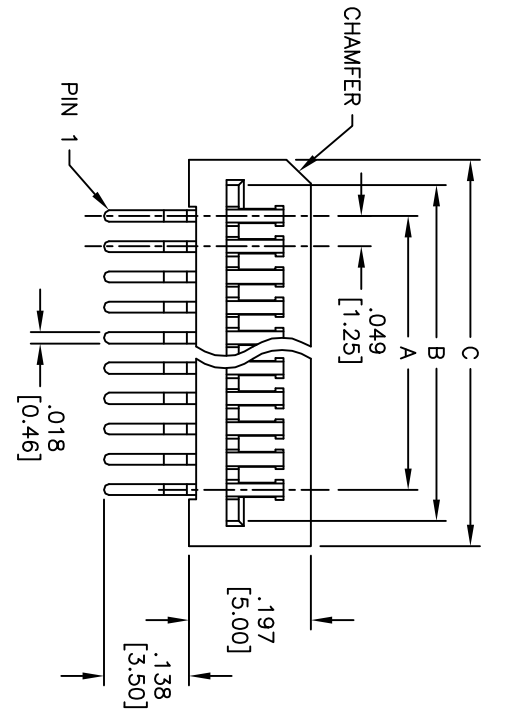


APPROVED: \_\_\_\_\_  
 DATE: \_\_\_\_\_ TITLE: \_\_\_\_\_

Rev	AWO #	Description	Date	Appr
-		RELEASED	3/23/05	
A		REDRAWN	5/15/08	



Positions: 3 thru 30  
 A = .049 [1.25] x No. of Positions -1  
 B = A + .100 [2.55]  
 C = A + .183 [4.65]

FPC/FFC THICKNESS  
 .012 ±.002 [0.30 ±0.051]

**SPECIFICATIONS:**  
 Material: Insulator: PBT, Glass reinforced, rated UL 94V-0  
 Insulator color: Black  
 Contacts: Phosphor Bronze  
 Plating: Tin over Copper underplate overall  
 Electrical: Operating voltage: 250 VAC RMS max  
 Current rating: 1 Amp max  
 Contact resistance: 25 mohms max initial  
 Insulation resistance: 1000 Mohms min  
 Dielectric withstanding voltage: 500 VAC for 1 minute  
 Temperature Rating: Operating temperature: -55°C to +85°C  
 Environmental: Lead free, RoHS compliant



UNLESS OTHERWISE SPECIFIED ALL DIMENSIONS ARE INCHES [MM]	
TOLERANCES: EXCEPT AS NOTED	
INCHES	HOLES
.X ±.10	Ø.X ±.10
.XX ±.020	Ø.XXX ±.015
.XXX ±.015	Ø.XXX ±.010
APPROVALS	DATE
DRAWN SS	3/23/05
CHECKED AY	7/28/10
APPROVED	

**ADAM TECH**  
 909 Rahway Avenue, Union, NJ 07083  
 Phone: 908-687-5000 Fax: 908-687-5710

TITLE		LIF FLEX CIRCUIT CONNECTOR	
SIDE ENTRY, 2.50 MM PCB ROW SPACING		SCALE: NTS	
SIZE	PART NO.	PCB-B-XX-SA-25	REV. A
REF: S00043T	SCALE: NTS	SHEET 1 OF 1	