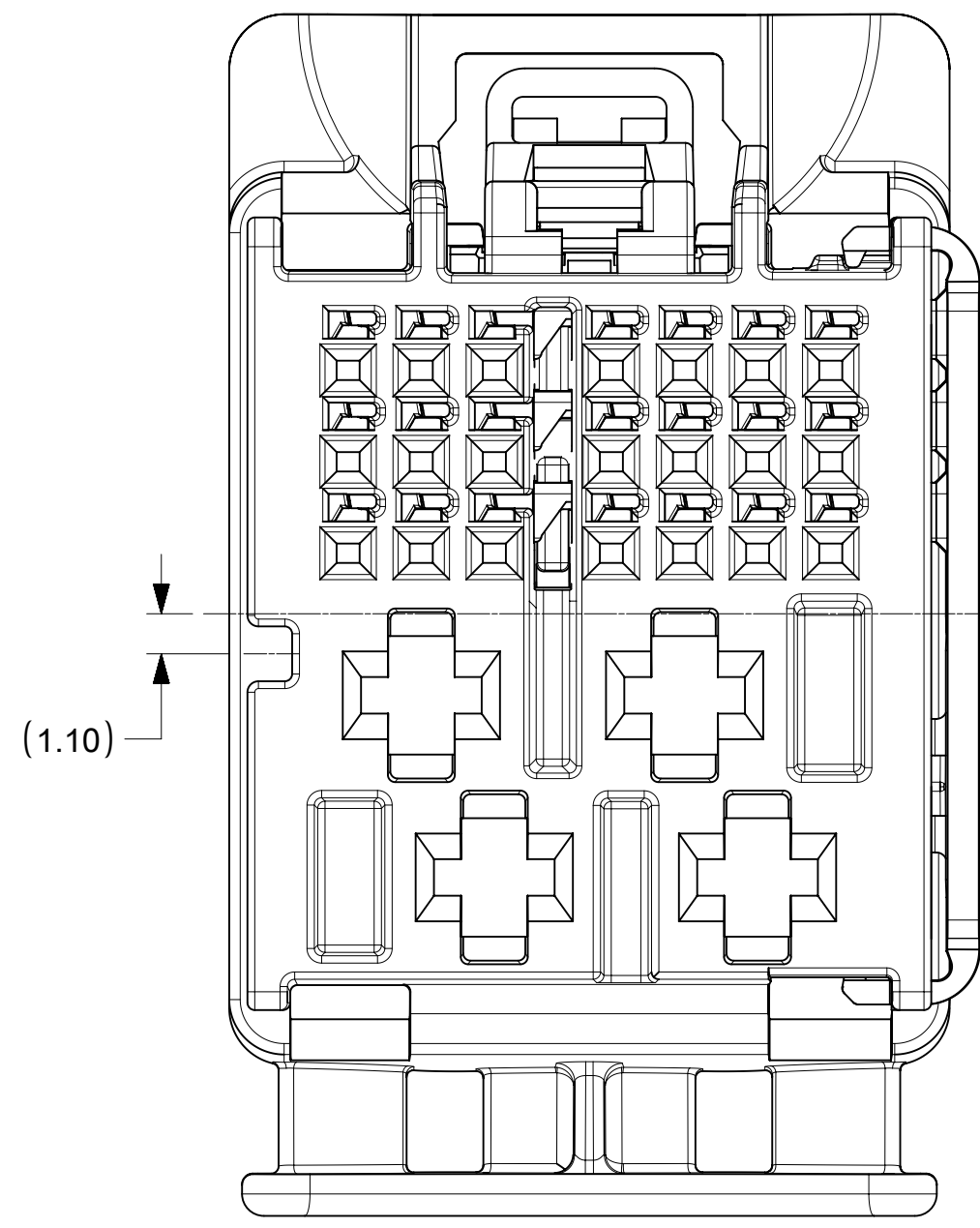
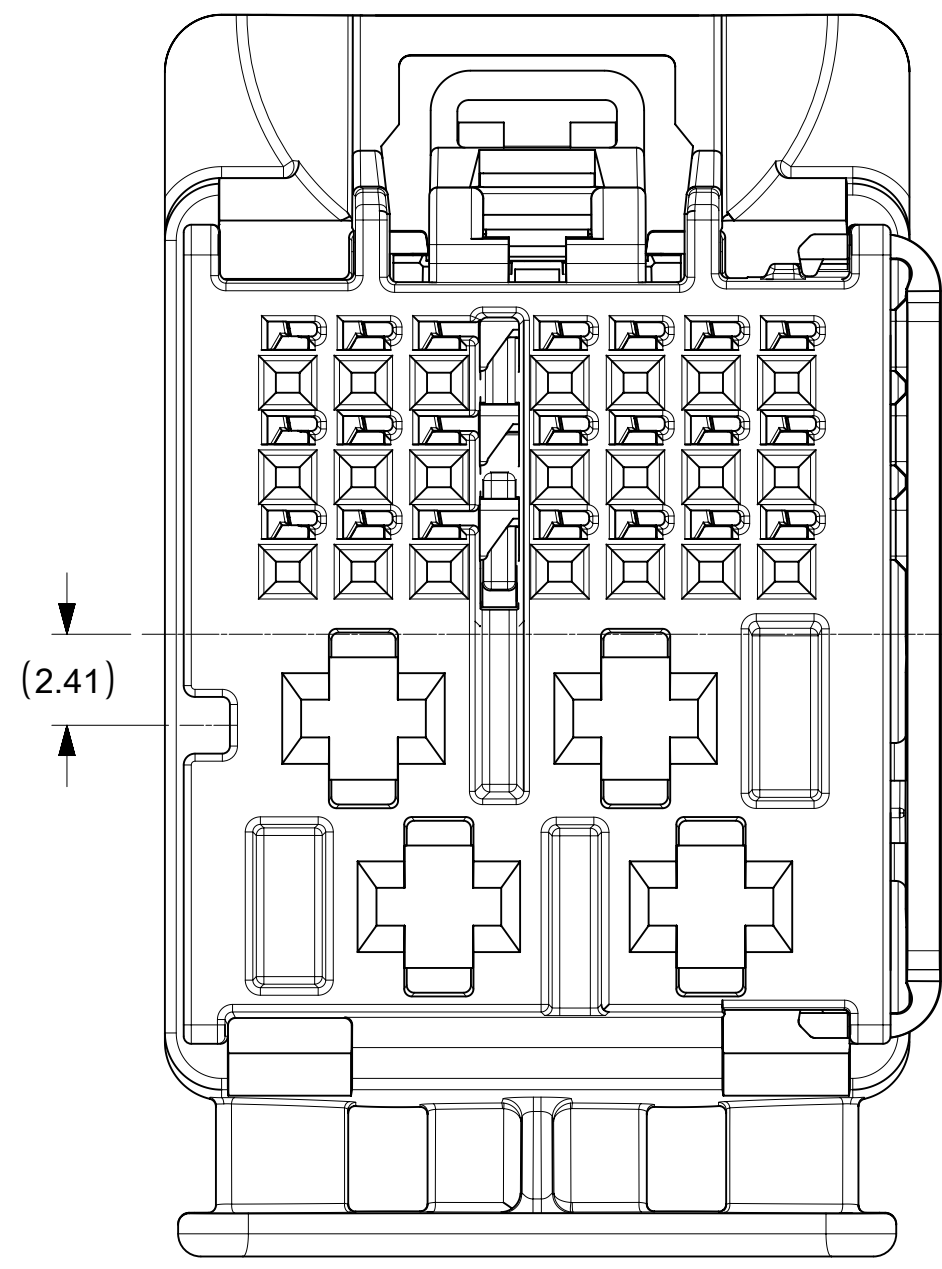


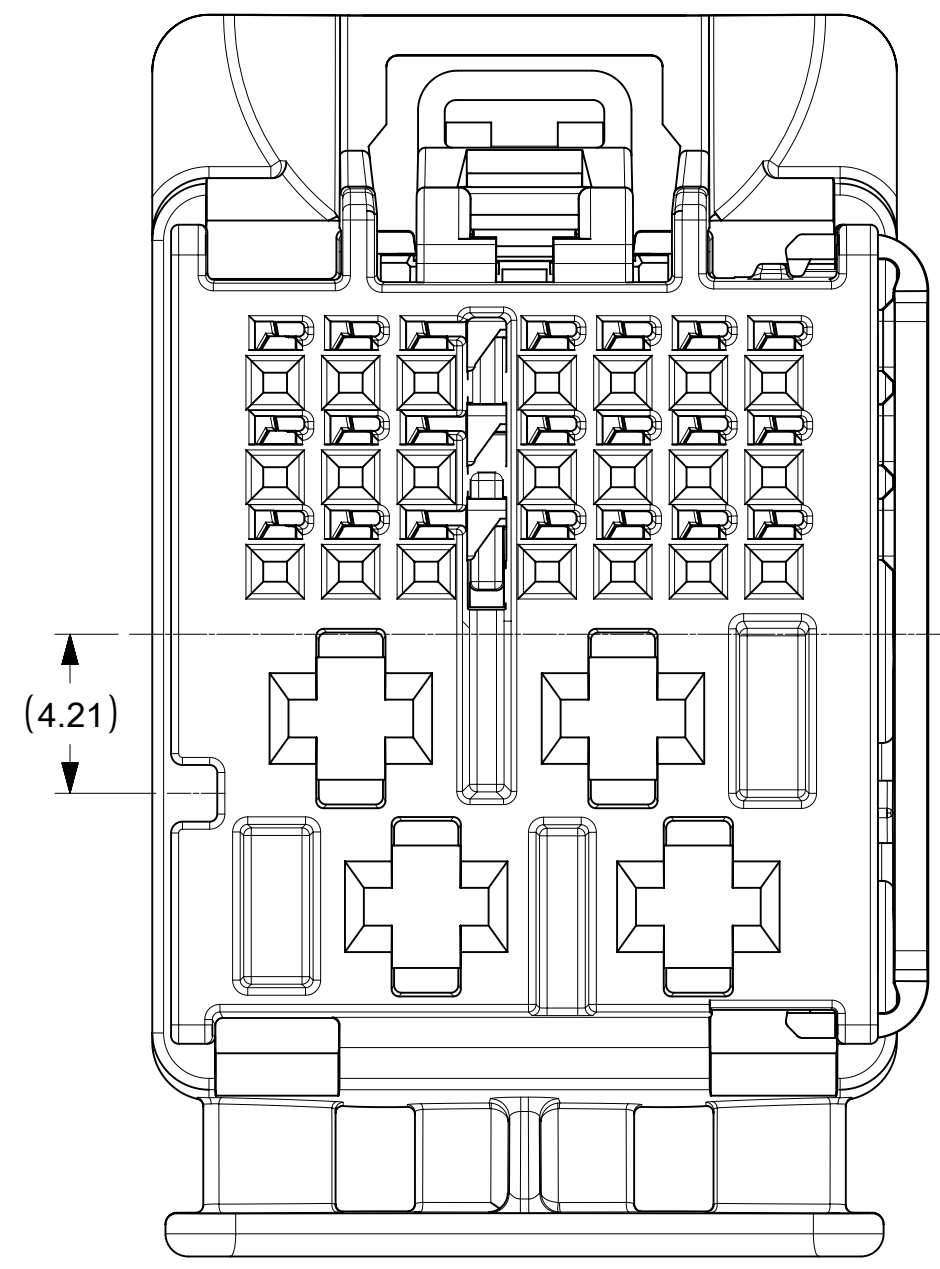
25 WAY CONNECTOR ASSEMBLY
KEY 1 & KEY 5



25 WAY CONNECTOR ASSEMBLY
KEY 2 & KEY 6



25 WAY CONNECTOR ASSEMBLY
KEY 3 & KEY 7



25 WAY CONNECTOR ASSEMBLY
KEY 4 & KEY 8

NOTES: VALID UNLESS OTHERWISE SPECIFIED

1. GENERAL:
- a. APPLICATION SPECIFICATION SEE: AS-160014-001
 - b. PRODUCT SPECIFICATION SEE: PS-160014-001
 - c. PACKAGING SPECIFICATION PER MOLEX DRAWING: PK-31302-266
 - d. PARTS MUST BE IN COMPLIANCE TO MOLEX CHEMICAL SUBSTANCES FOR PRODUCTS AND PACKAGING SPECIFICATION: ES-40000-5016
 - e. DATA MUST BE SUBMITTED UNDER THE MOLEX PART NUMBER TO IMDS (COMPANY ID#13255)

2. DESIGN - MATERIALS:
- a. SEE BOM TABLE

3. DESIGN - GEOMETRY:
- a. ALL GRAPHIC DATA IS BASIC (NO TOLERANCE) AND MUST BE TAKEN FROM THE DATA FILE AT ITS LATEST REVISION.
 - b. PRODUCT DESIGN MODEL NUMBER(S): SEE BOM TABLE
 - c. GEOMETRIC DIMENSIONS AND TOLERANCES PER ASME Y14.5-2009
 - d. EDGES AND UNDIMENSIONED DETAILS PER ISO13715
 - e. CORNERS SHOWN AS SHARP TO BE R 0.2 MAX.
 - f. MARKED TEXT TO INCLUDE RECYCLING CODE, CAVITY ID, VENDOR IDENTIFICATION AND CUSTOMER MATERIAL NUMBER.
 - 1. LASER ETCHED DATE CODE
 - 1ST THROUGH 2ND DIGIT = CALENDAR YEAR
 - 3RD THROUGH 5TH DIGIT = "DAY #" OF YEAR
 - 6TH THROUGH 7TH DIGIT = HOUR OF DAY
 - 8TH THROUGH 9TH DIGIT = MINUTE OF HOUR
 - 10TH THROUGH 11TH DIGIT = SECOND OF MINUTE

4. DESIGN - MANUFACTURING:
- a. VISUAL DEFECTS SHALL MEET COSMETIC STANDARD PS-45499-002 (Class B)

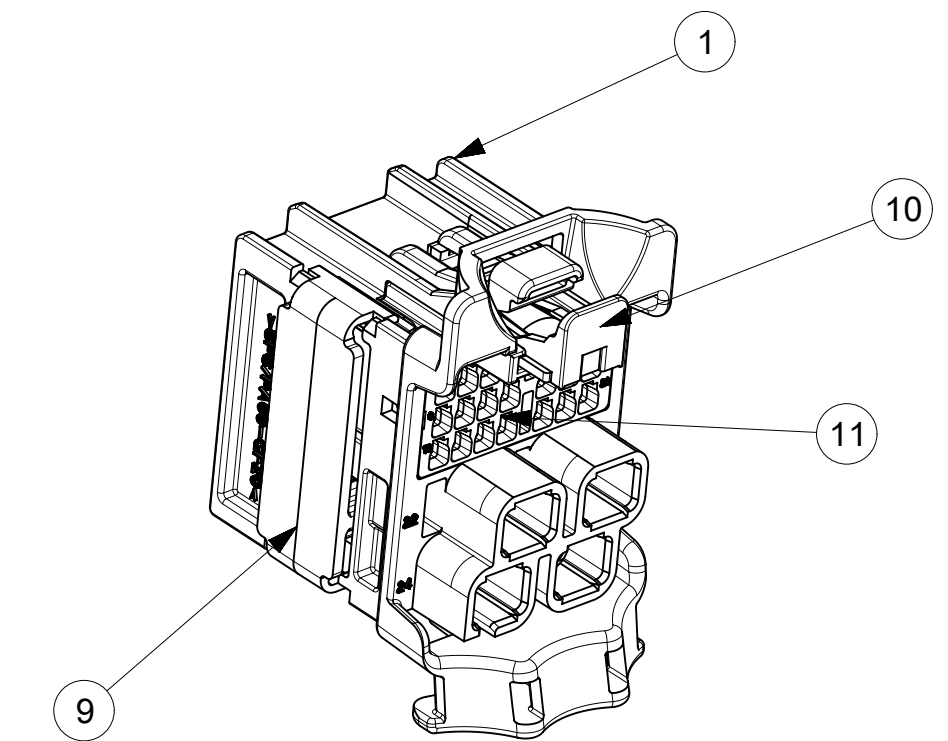
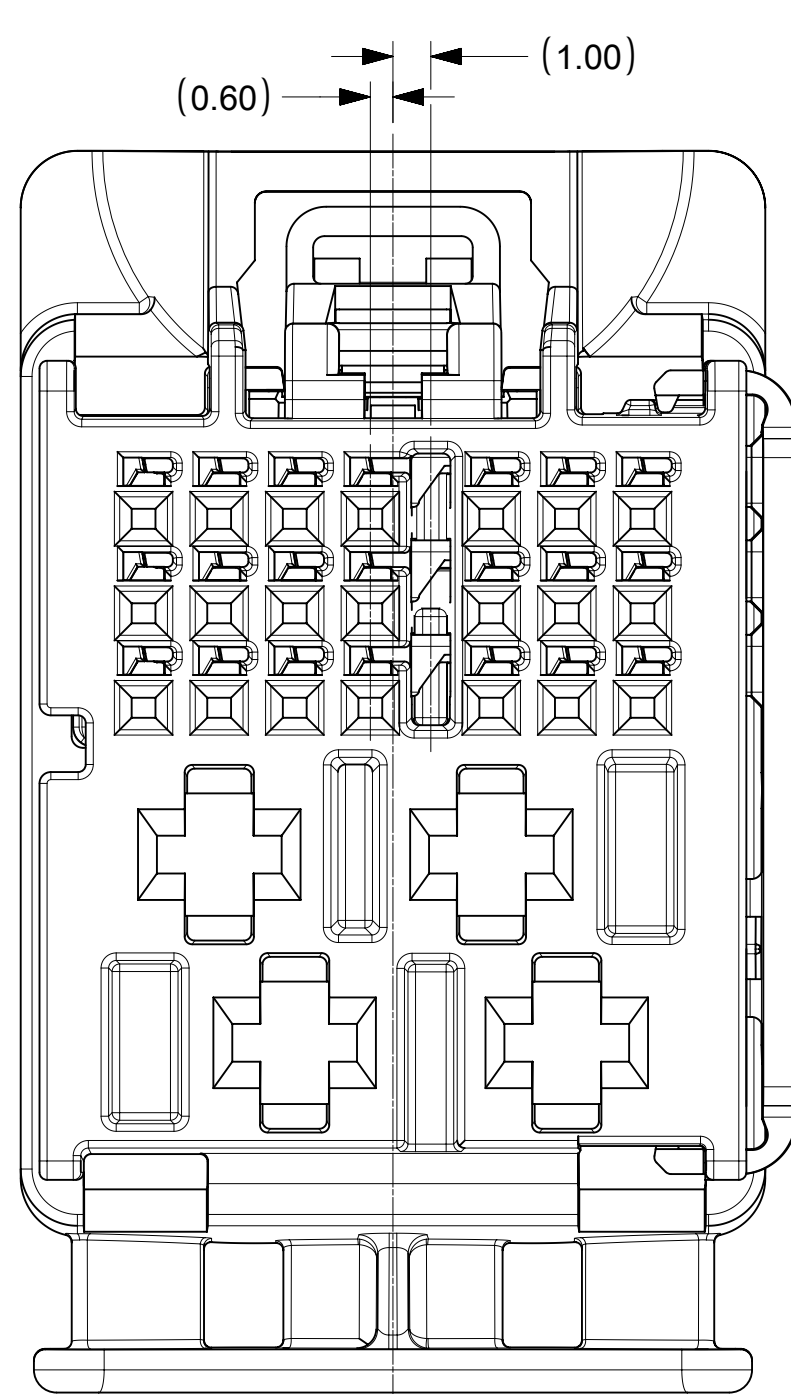
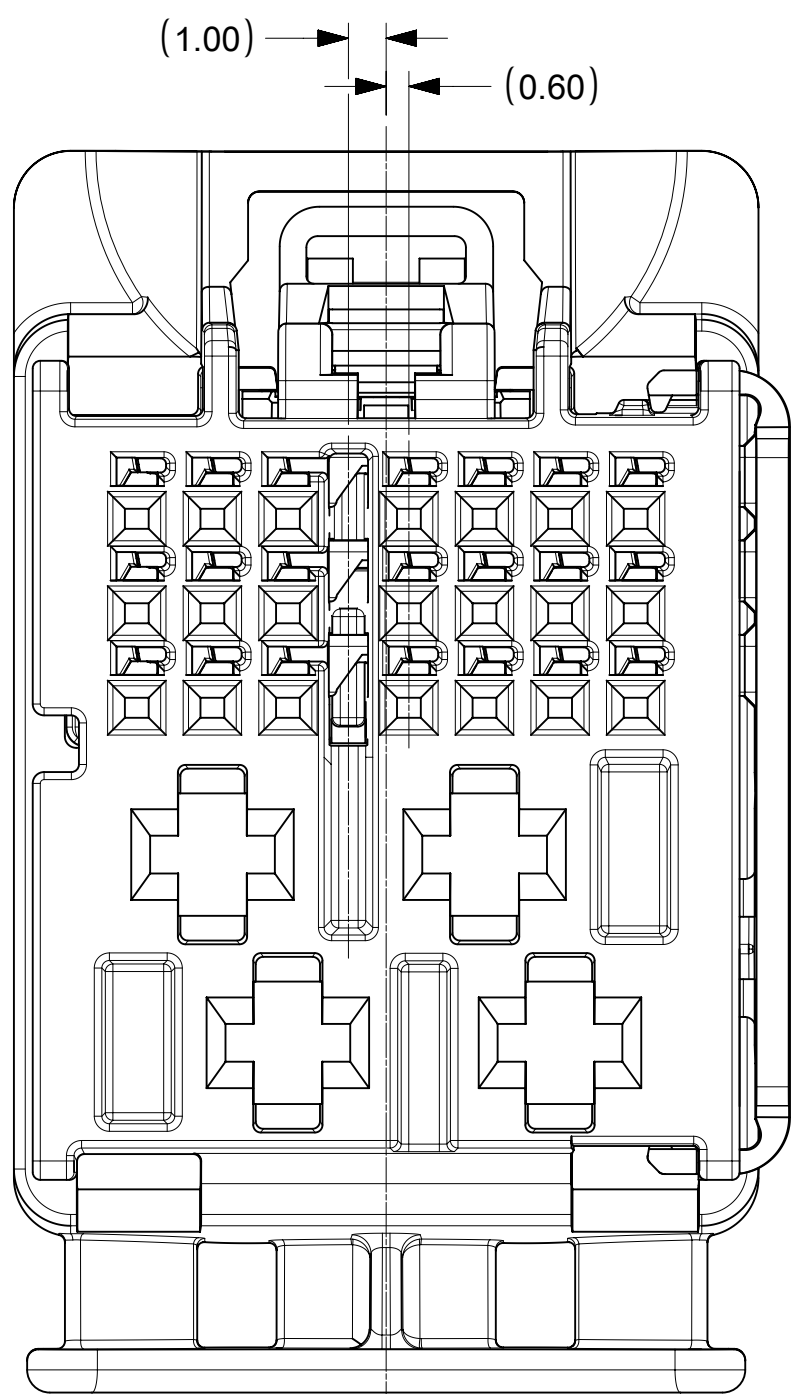
| PART NUMBER | PLATING | SUPPLIER | WIRE GAGE (mm2) | TERMINAL FAMILY | WIRE SPECIFICATION |
|-------------|-------------|----------|-----------------|-------------------------------------|--|
| 200096-0101 | TIN PLATING | MOLEX | 0.35 | TAK FAMILY (0.5 mm) | VW 60306 OR GMW 15626 (SEE APPLICATION SPECIFICATION FOR MORE DETAILS) |
| 200096-0201 | TIN PLATING | MOLEX | 0.13 | TAK FAMILY (0.5 mm) | |
| 2272196-2 | TIN PLATING | TE | 0.35 | Generation 50 Locking Lance (0.5mm) | SAE/ J1128 THIN WALL INSULATION |
| 2272196-1 | TIN PLATING | TE | 0.13 | Generation 50 Locking Lance (0.5mm) | |
| 1-968851-1 | TIN PLATING | TE | 1.0 - 2.5 | AMP MCP 2.8 | GMW 15626 INSULATION TYPE FLR (REGULAR THIN WALL) |
| 1-968849-1 | TIN PLATING | TE | 0.5 - 1.0 | AMP MCP 2.8 | |
| 15457849 | TIN PLATING | DELPHI | 1.5 - 2.5 | CTS 2.8mm | |
| 15457848 | TIN PLATING | DELPHI | 0.5 - 1.0 | CTS 2.8mm | |

| ITEM | DESCRIPTION | COLOR | RECYCLING CODE | WEIGHT (GRAMS) | RIB OPTION | NO OF ITEMS REQUIRED | | | | | | | | | | | | | | |
|------|----------------------|---------------|----------------|----------------|------------|----------------------|---|---|---|---|---|---|---|---|---|---|---|---|---|---|
| 1 | OUTER SHROUD - KEY 1 | LIGHT GREEN B | SPS/PA66-GF20 | 4.1 | A | 1 | | | | | | | | | | | | | | |
| 2 | OUTER SHROUD - KEY 2 | STONE GRAY | SPS/PA66-GF20 | 4.1 | A | | 1 | | | | | | | | | | | | | |
| 3 | OUTER SHROUD - KEY 3 | BLACK | SPS/PA66-GF20 | 4.1 | A | | | 1 | | | | | | | | | | | | |
| 4 | OUTER SHROUD - KEY 4 | DARK GRAY | SPS/PA66-GF20 | 4.1 | A | | | | 1 | | | | | | | | | | | |
| 5 | OUTER SHROUD - KEY 5 | DK PURPLE A | SPS/PA66-GF20 | 4.1 | B | | | | | 1 | | | | | | | | | | |
| 6 | OUTER SHROUD - KEY 6 | TBD | SPS/PA66-GF20 | 4.1 | B | | | | | | 1 | | | | | | | | | |
| 7 | OUTER SHROUD - KEY 7 | TBD | SPS/PA66-GF20 | 4.1 | B | | | | | | | 1 | | | | | | | | |
| 8 | OUTER SHROUD - KEY 8 | LT GRAY | SPS/PA66-GF20 | 4.1 | B | | | | | | | | 1 | | | | | | | |
| 9 | ISL | NATURAL | SPS-GF30 | 0.37 | N/A | 1 | 1 | 1 | 1 | 1 | 1 | 1 | 1 | 1 | 1 | 1 | 1 | 1 | 1 | 1 |
| 10 | CPA | NATURAL | PA66-GF50 | 0.08 | N/A | 1 | 1 | 1 | 1 | 1 | 1 | 1 | 1 | 1 | 1 | 1 | 1 | 1 | 1 | 1 |
| 11 | INNER HOUSING | STONE GRAY | SPS/PA66-GF20 | 1.04 | N/A | 1 | 1 | 1 | 1 | | | | | | | | | | | |
| 12 | INNER HOUSING | STONE GRAY | SPS/PA66-GF20 | 1.04 | N/A | | | | | | | | | 1 | 1 | 1 | 1 | 1 | 1 | 1 |

| MOLEX ASSEMBLY PART NO.'S | |
|---------------------------|-------|
| 1600270011 | KEY 1 |
| 1600270012 | KEY 2 |
| 1600270013 | KEY 3 |
| 1600270014 | KEY 4 |
| 1600270015 | KEY 5 |
| 1600270016 | KEY 6 |
| 1600270017 | KEY 7 |
| 1600270018 | KEY 8 |

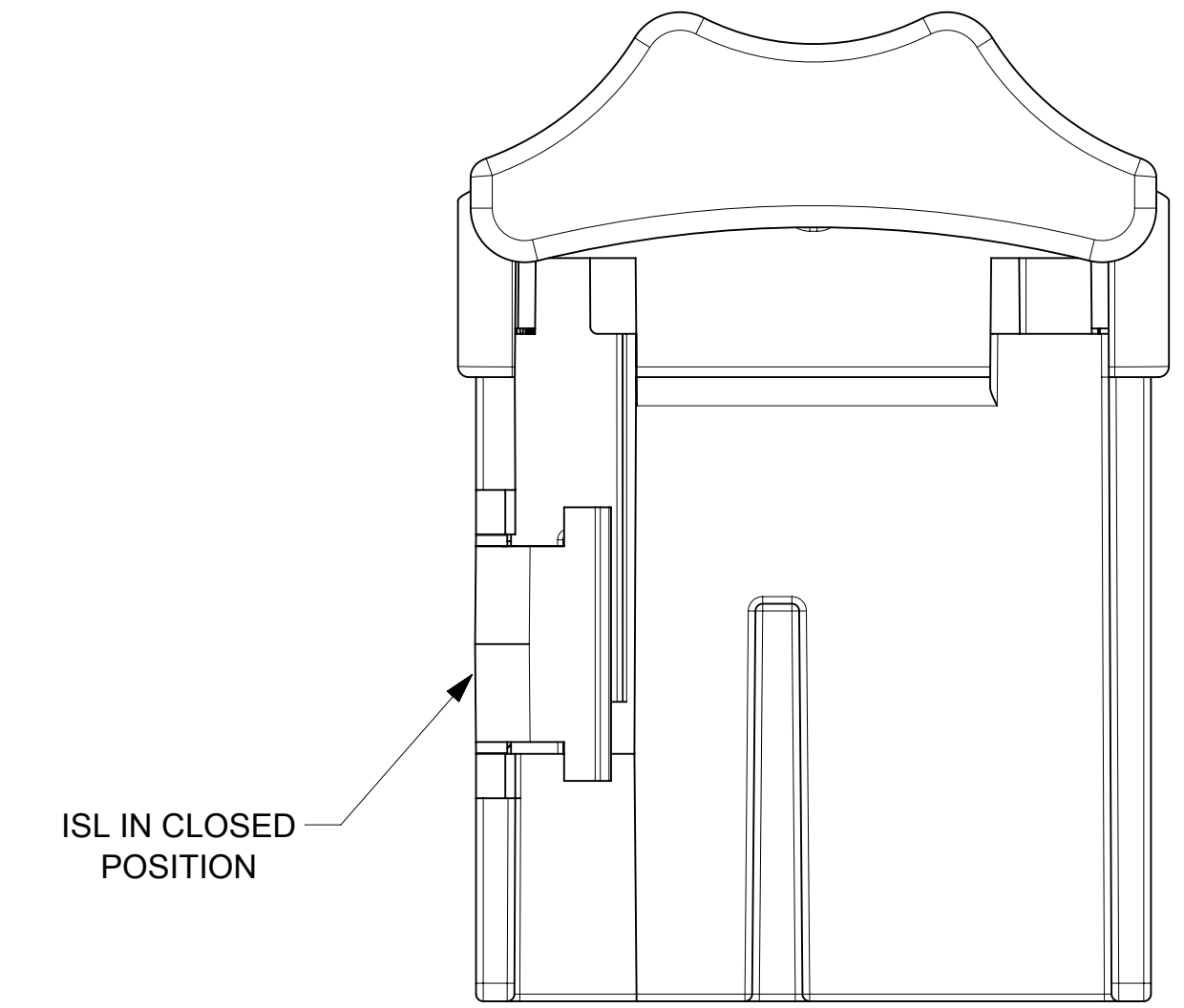
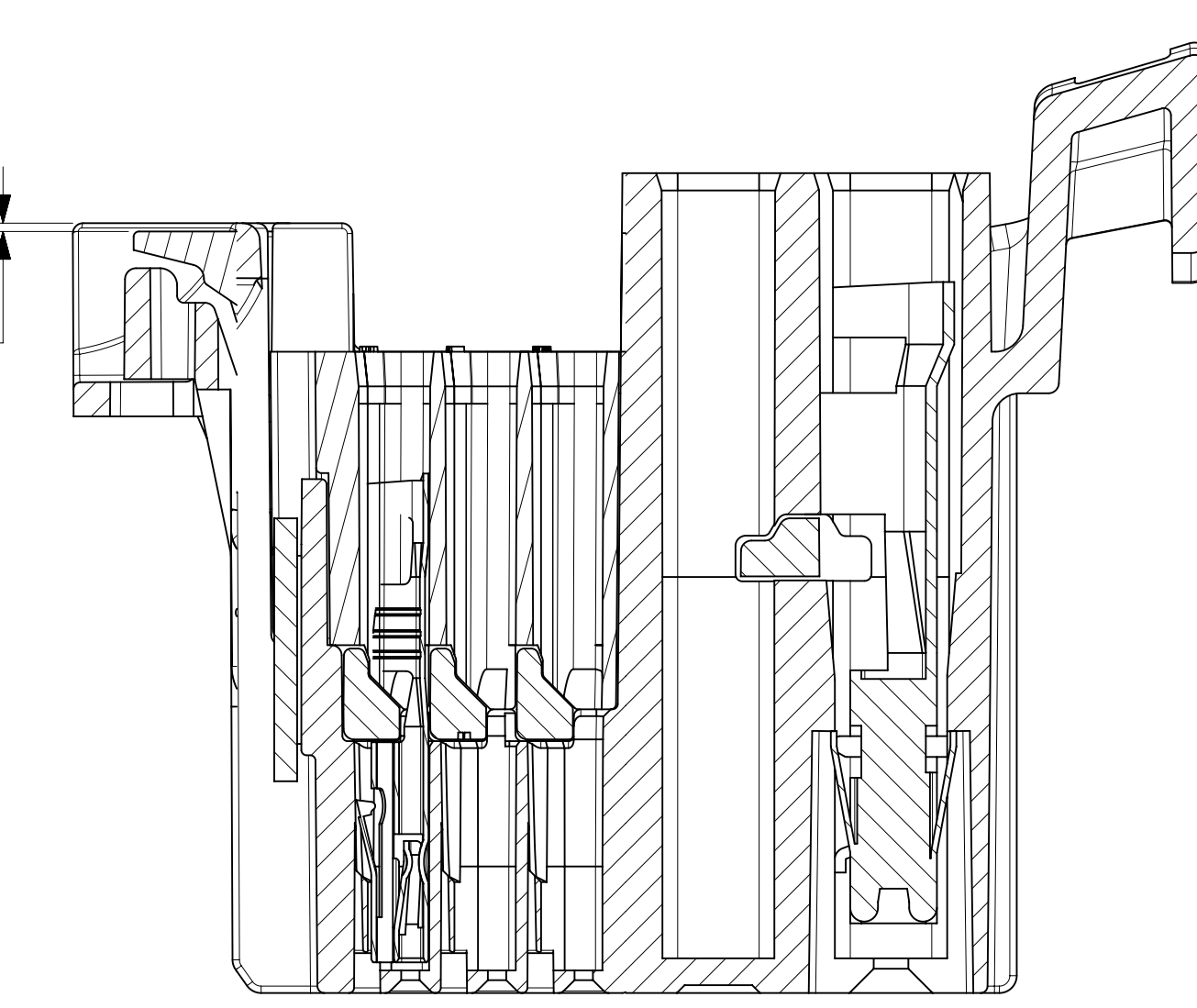
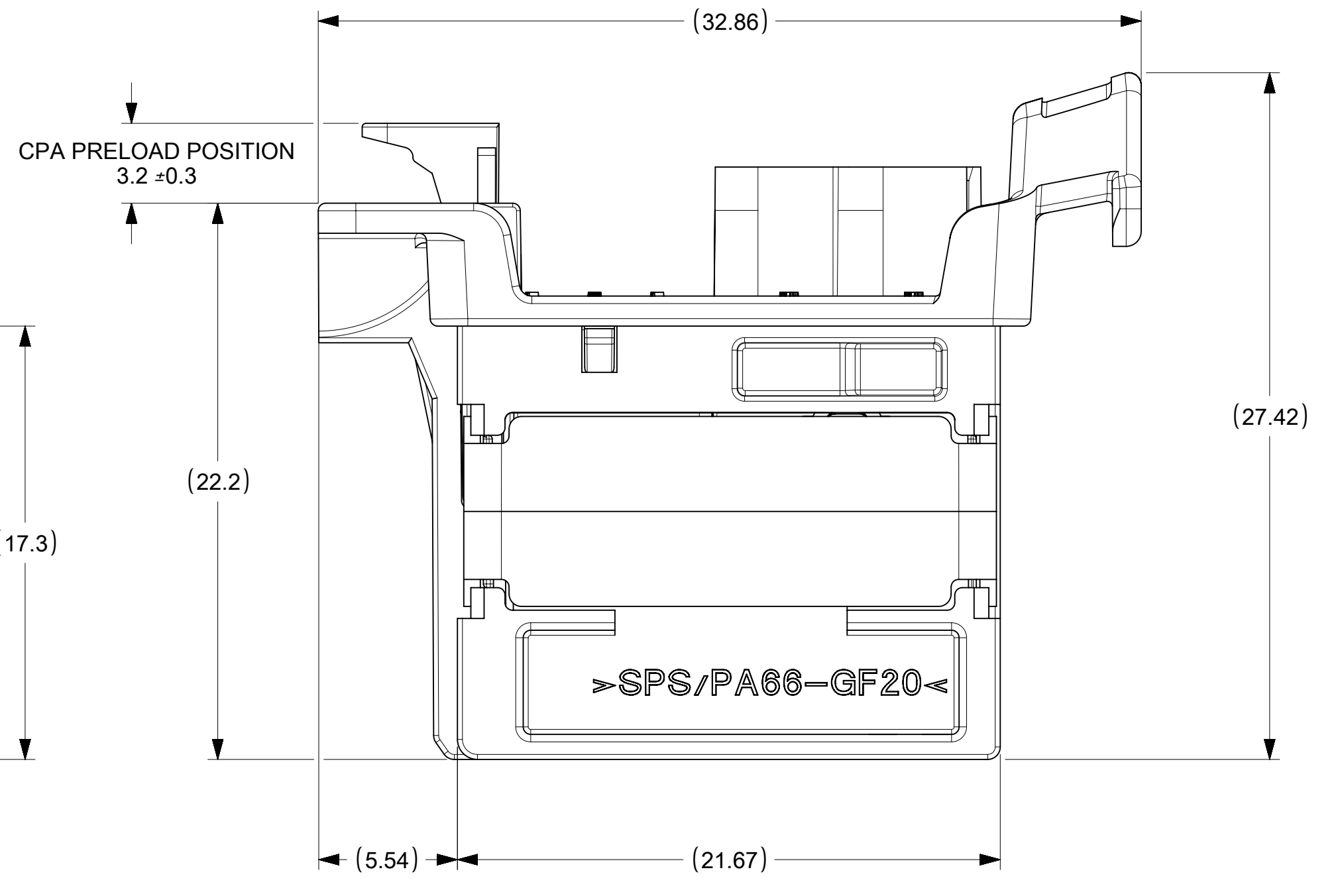
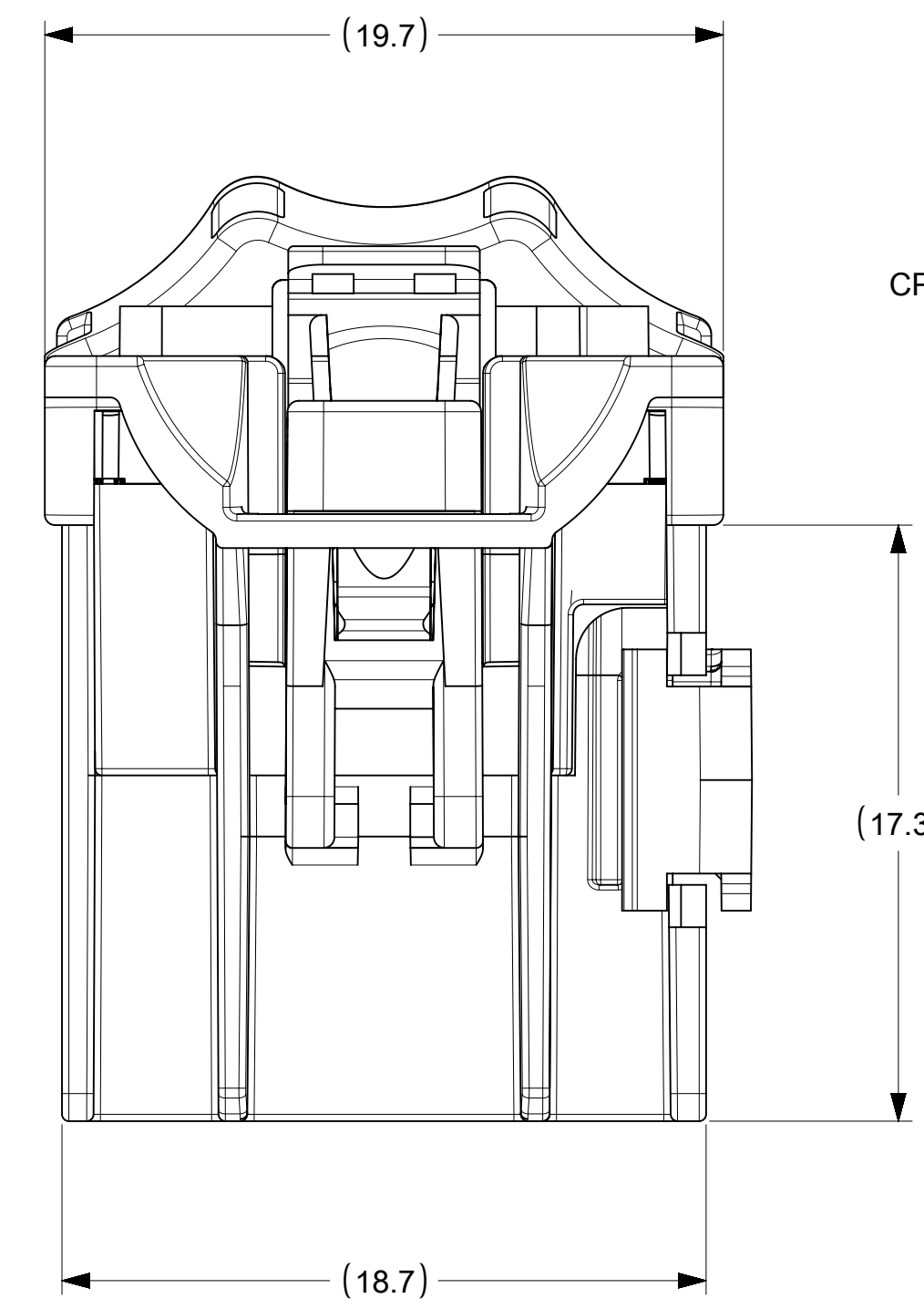
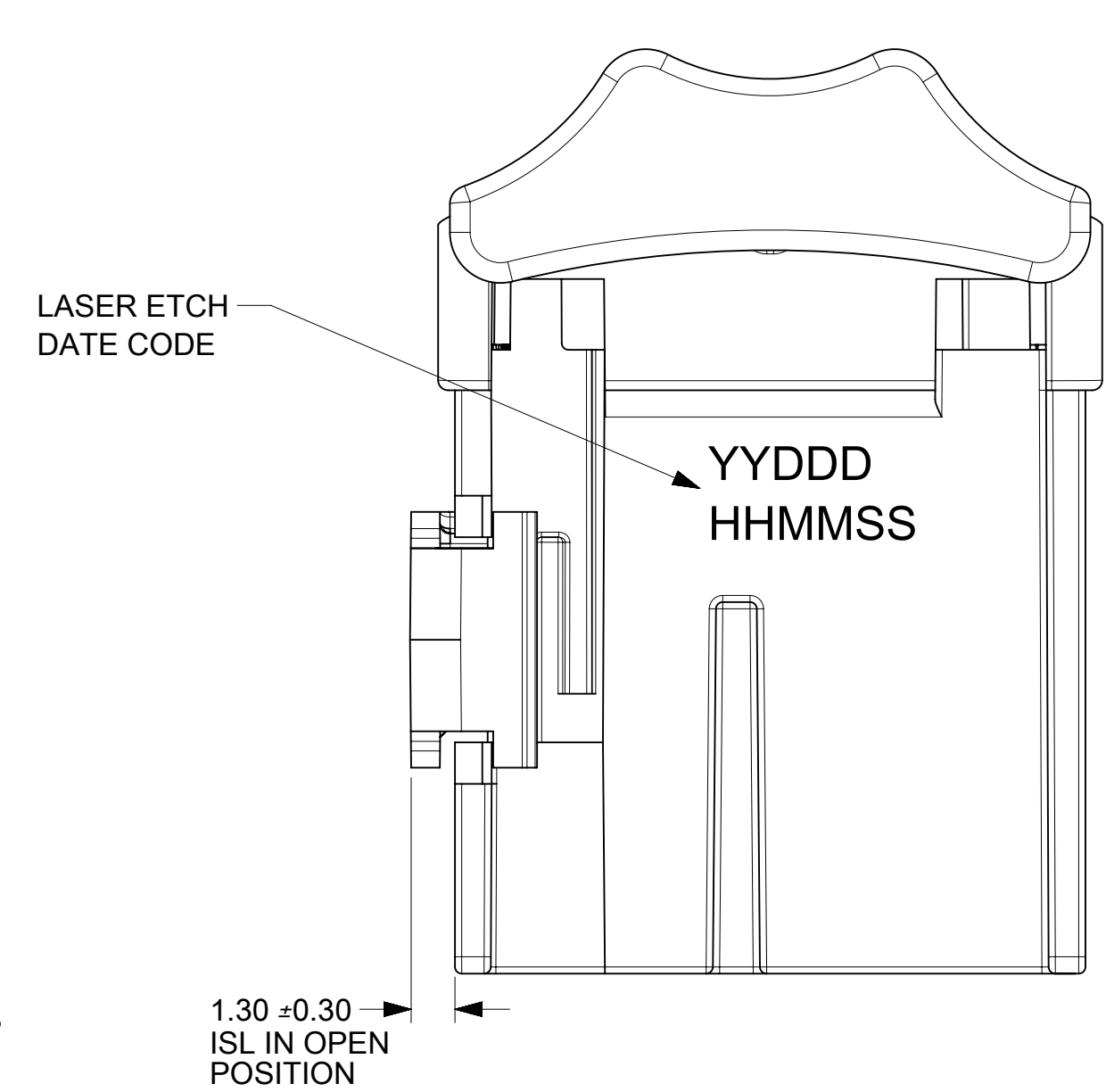
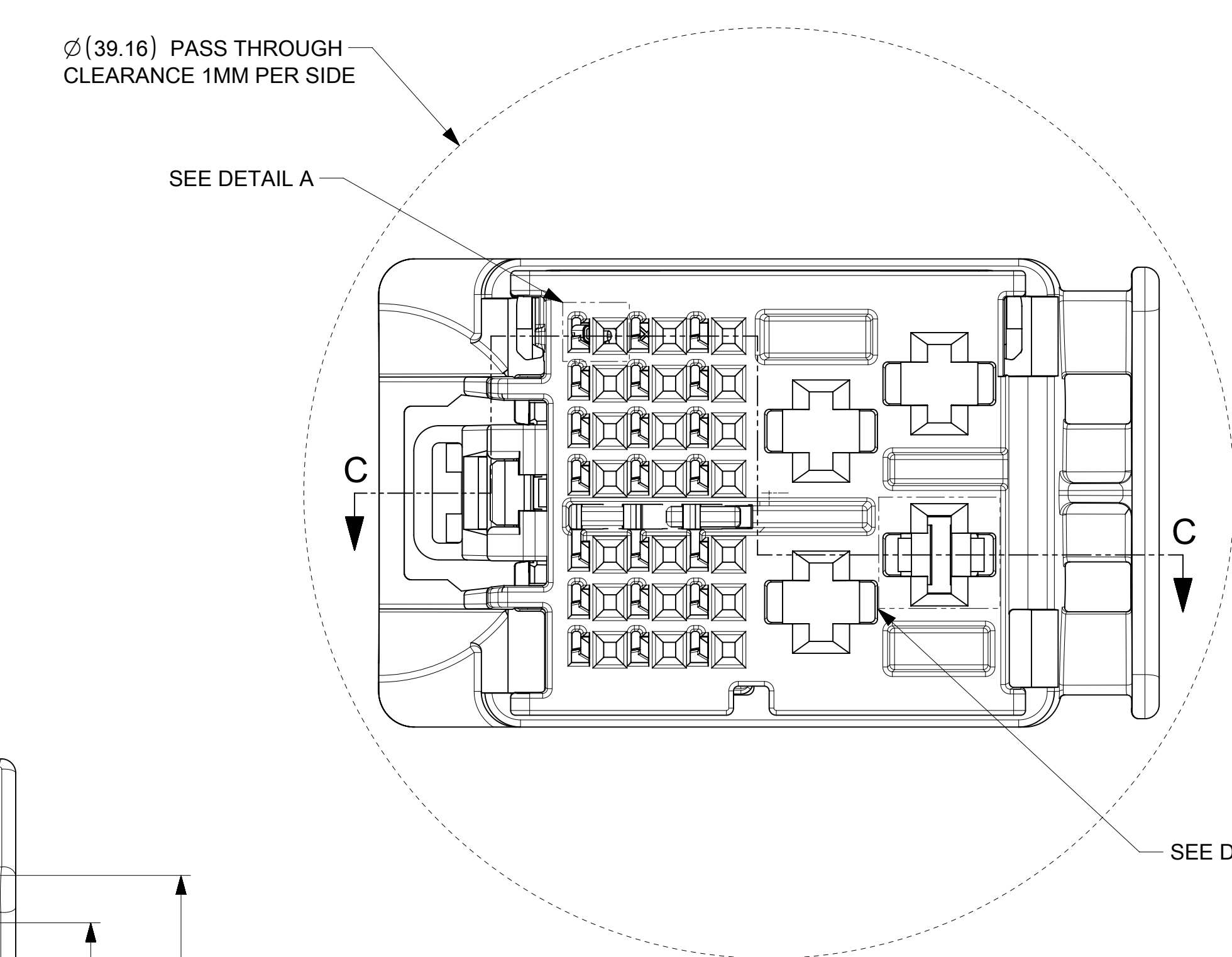
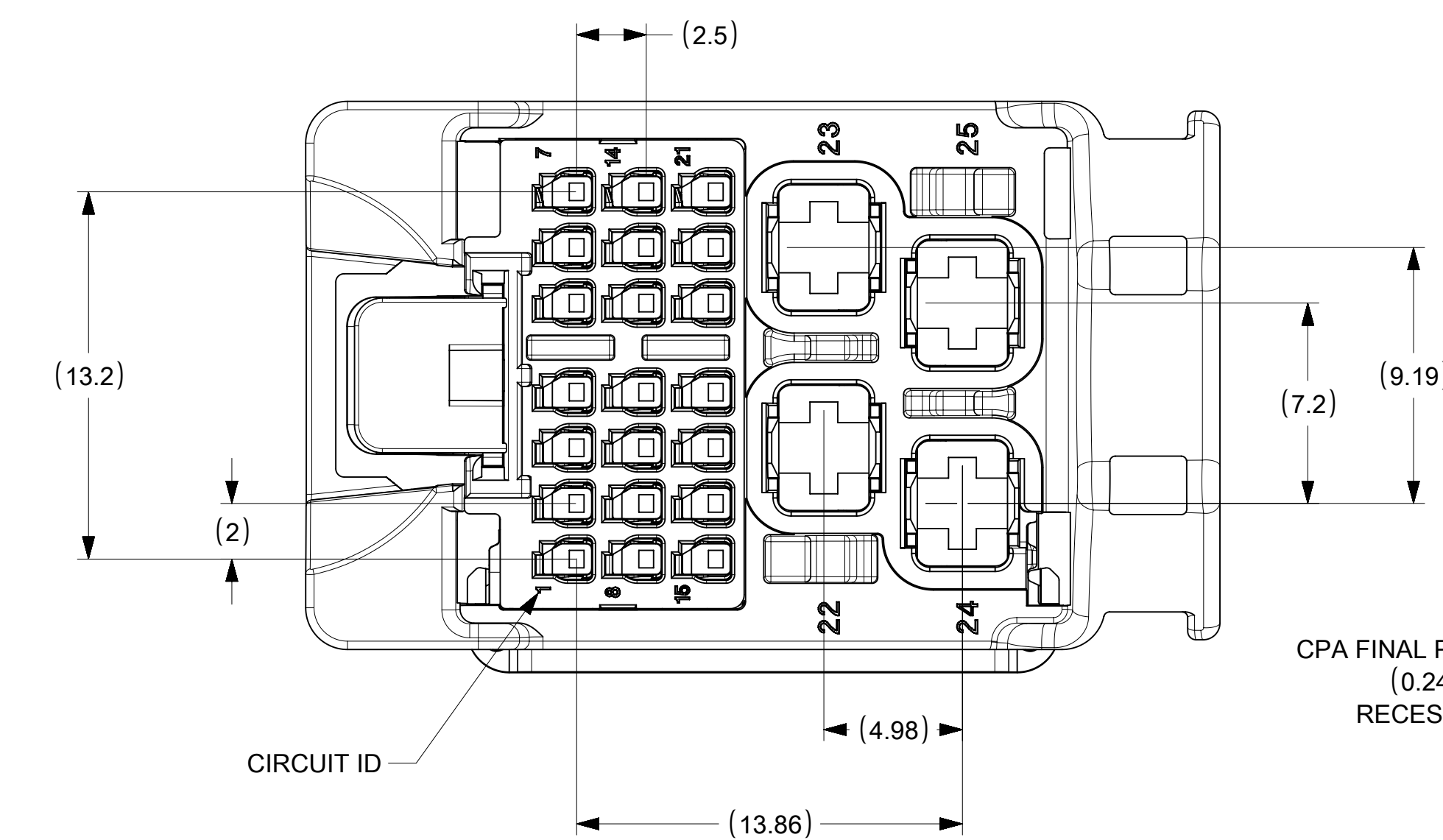
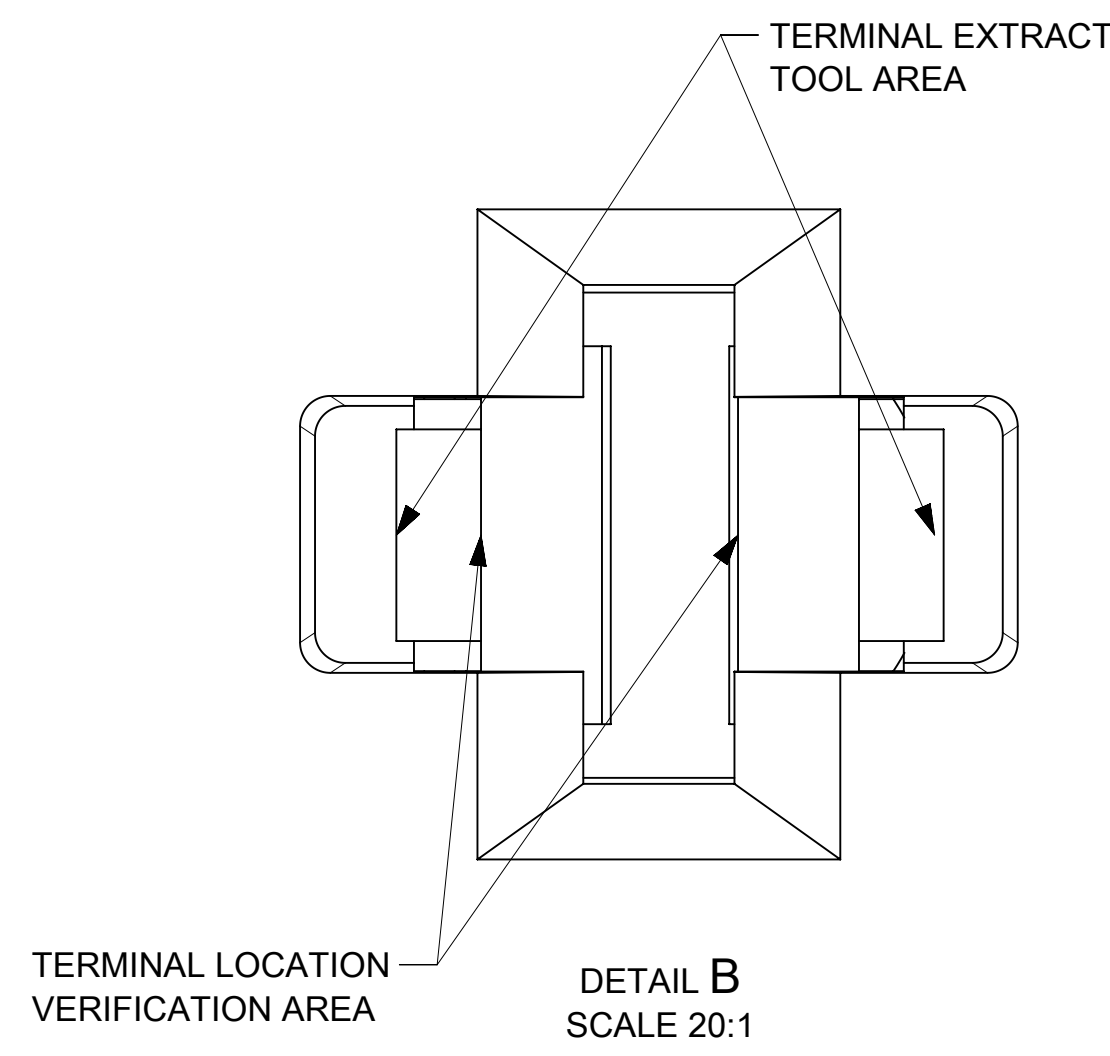
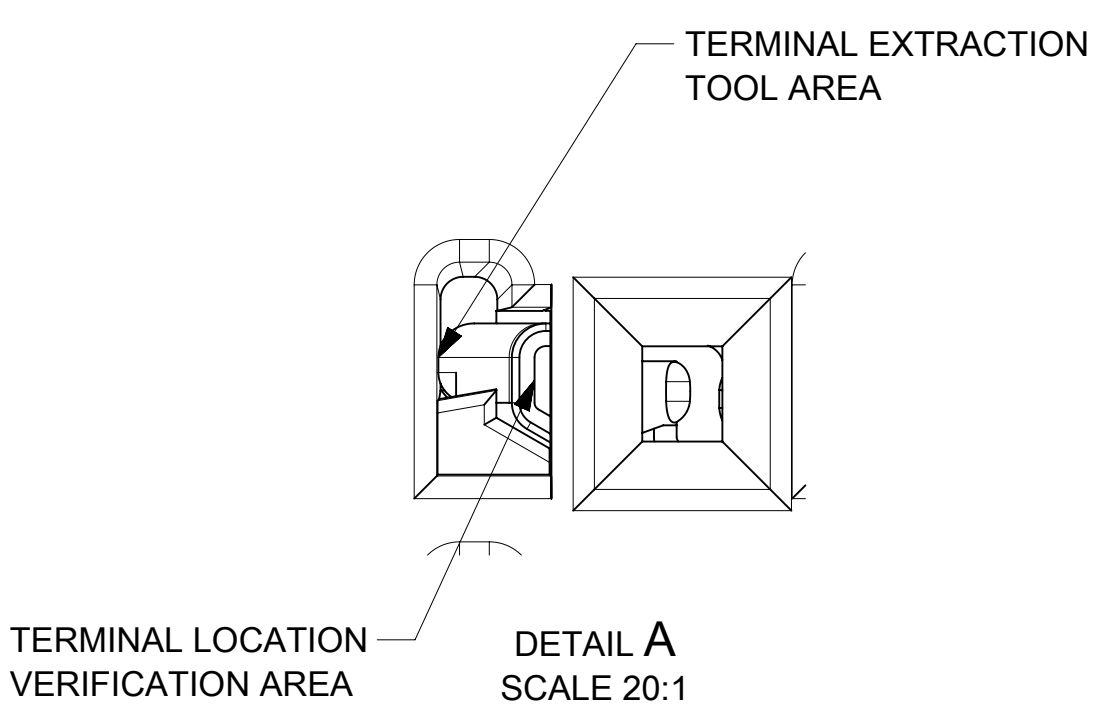
RIB OPTION A

RIB OPTION B



SCALE 2:1

| | | | | | |
|---------|--|---|---|--|--|
| SYMBOLS | THIS DRAWING CONTAINS INFORMATION THAT IS PROPRIETARY TO MOLEX ELECTRONIC TECHNOLOGIES, LLC AND SHOULD NOT BE USED WITHOUT WRITTEN PERMISSION | | CURRENT REV DESC: UPDATED 2.8 CAVITY VIEWS ON SHEET 2 | | |
| | DIMENSION UNITS: mm SCALE: 5:1 GENERAL TOLERANCES (UNLESS SPECIFIED): ANGULAR TOL ± 3.0° 4 PLACES ± 3 PLACES ± 2 PLACES ± 0.3 1 PLACE ± 0.3 0 PLACES ± 0.3 DRAFT WHERE APPLICABLE MUST REMAIN WITHIN DIMENSIONS | EC NO: 613462 DRWN: RCARLSON 2019/03/07 CHK'D: JCONDON 2019/03/08 APPR: JCONDON 2019/03/08 INITIAL REVISION: DRWN: RCARLSON 2019/02/18 APPR: JCONDON 2019/02/25 | PRODUCT CUSTOMER DRAWING DOCUMENT NUMBER: 1600270011 DOC TYPE: PSD DOC PART: 000 REVISION: A2 | | |



| | | |
|---|---|----------------------------|
| SYMBOLS | THIS DRAWING CONTAINS INFORMATION THAT IS PROPRIETARY TO MOLEX ELECTRONIC TECHNOLOGIES, LLC AND SHOULD NOT BE USED WITHOUT WRITTEN PERMISSION | |
| | DIMENSION UNITS | SCALE |
| ▽ = 0 | mm | 5:1 |
| ▽ = 0 | GENERAL TOLERANCES (UNLESS SPECIFIED) | |
| ▽ = 0 | ANGULAR TOL | ± 3.0° |
| ▽ = 0 | 4 PLACES | ± |
| ▽ = 0 | 3 PLACES | ± |
| ▽ = 0 | 2 PLACES | ± 0.3 |
| ▽ = 0 | 1 PLACE | ± 0.3 |
| ▽ = 0 | 0 PLACES | ± 0.3 |
| ■ = 0 | DRAFT WHERE APPLICABLE MUST REMAIN WITHIN DIMENSIONS | |
| ▽ = 0 | THIRD ANGLE PROJECTION | |
| CURRENT REV DESC: UPDATED 2.8 CAVITY VIEWS ON SHEET 2 | | |
| EC NO: 613462 | | |
| DRWN: RCARLSON | | 2019/03/07 |
| CHK'D: JCONDON | | 2019/03/08 |
| APPR: JCONDON | | 2019/03/08 |
| INITIAL REVISION: | | |
| DRWN: RCARLSON | | 2019/02/18 |
| APPR: JCONDON | | 2019/02/25 |
| DRAFT WHERE APPLICABLE MUST REMAIN WITHIN DIMENSIONS | | |
| D-DRAWING | | SERIES |
| D-SIZE | | 160027 |
| MATERIAL NUMBER | | CUSTOMER |
| SEE SHEET 1 | | GENERAL MARKET |
| DOCUMENT NUMBER | | DOC TYPE DOC PART REVISION |
| 1600270011 | | PSD 000 A2 |
| SHEET NUMBER | | |
| 2 OF 2 | | |