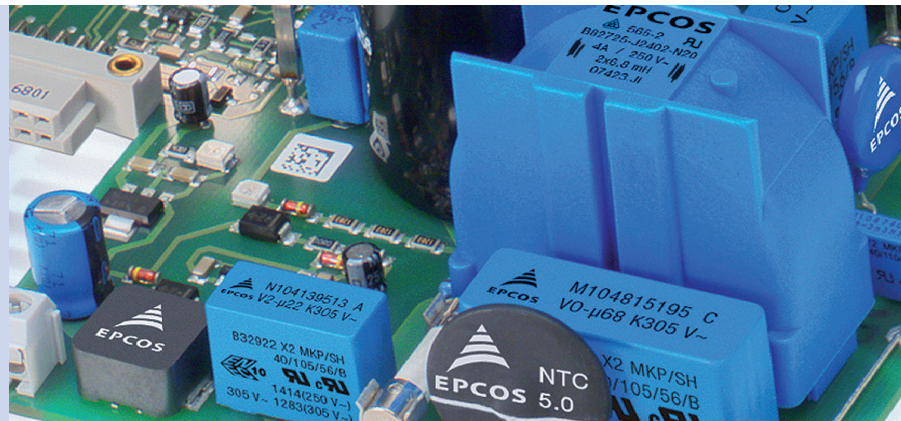


EPCOS Sample Kit 2014

# Ring Core Chokes for Power Lines

Series B82723



# Ring Core Chokes for Power Lines

RoHS  
compatible

## Series B82723

$L_R$	mH	<b>56</b>	<b>27</b>	<b>5.6</b>	<b>2.7</b>	<b>0.45</b>
$I_R$	A	0.5	1	2	4	8
$L_{\text{stray, typ}}$	$\mu\text{H}$	800	440	70	30	5
$R_{\text{typ}}$	$\text{m}\Omega$	2100	750	160	60	11
$T_R$	$^{\circ}\text{C}$	60	60	60	60	60
UL <sup>1)</sup> /VDE		Yes	Yes	Yes	Yes	Pending
Ordering code	B82723	A/J2501N001	A/J2102N001	A/J2202N001	A/J2402N001	A/J2802N001

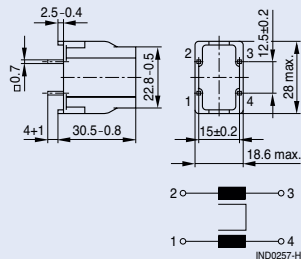
- Rated current:  $I_R$  at 50 Hz and  $T_R$
- Rated voltage: 250 V AC (50/60 Hz)
- Higher inductance or intermediate values possible upon request

- Approx. 1% stray inductance for symmetrical interference suppression
- Higher rated current  $I_R$  available with series B82724 ... B82726

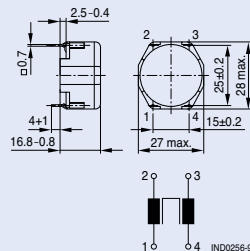
<sup>1)</sup> UL approval with 300 V AC

## Dimensional drawings and pin configurations

Vertical version (B82723J)

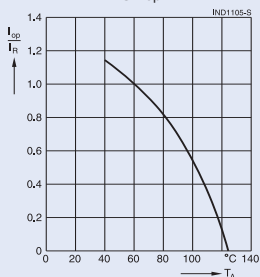


Horizontal version (B82723A)

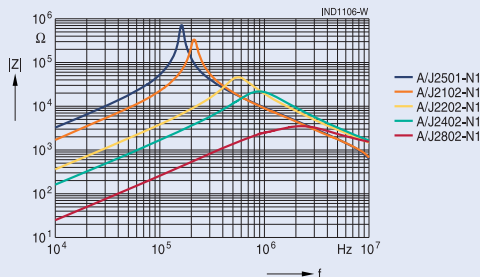


Tolerances to ISO 2768-C unless otherwise noted. Dimensions in mm.

## Current derating $I_{op}/I_R$ versus temperature $T$



## Impedance $|Z|$ versus frequency $f$



**Important information:** It is incumbent on the customer to check and decide whether a product is suitable for use in a particular application. Our products are described in detail in our data sheets. Our *Important notes* and the product-specific *Cautions and warnings* must be observed. All relevant information is available through our sales offices.