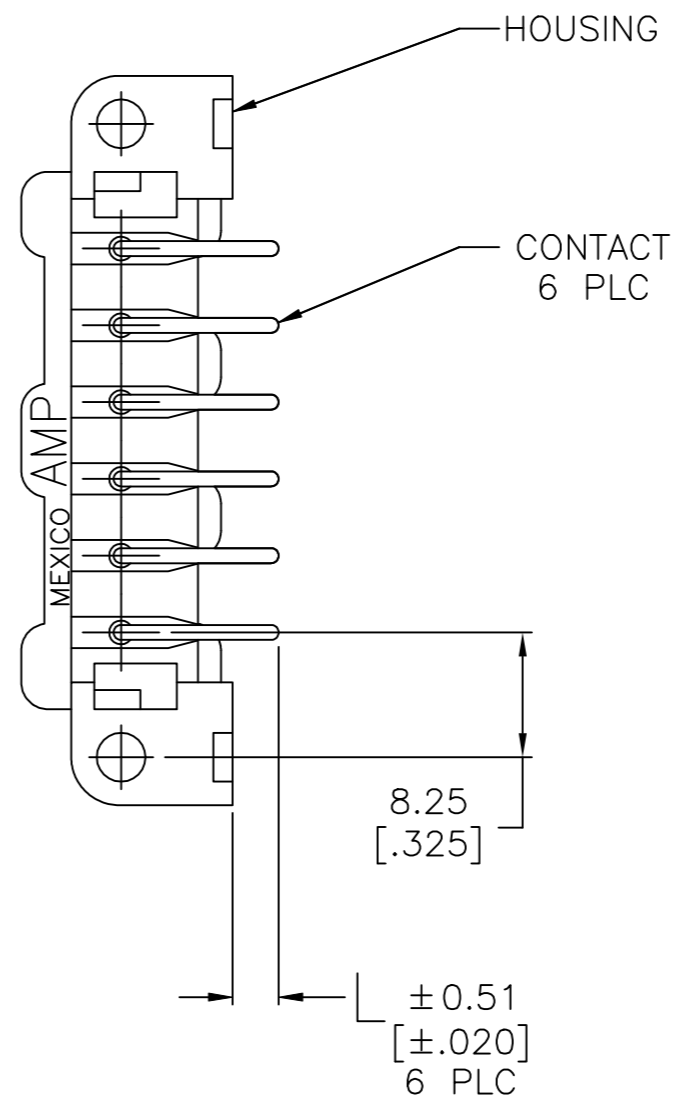
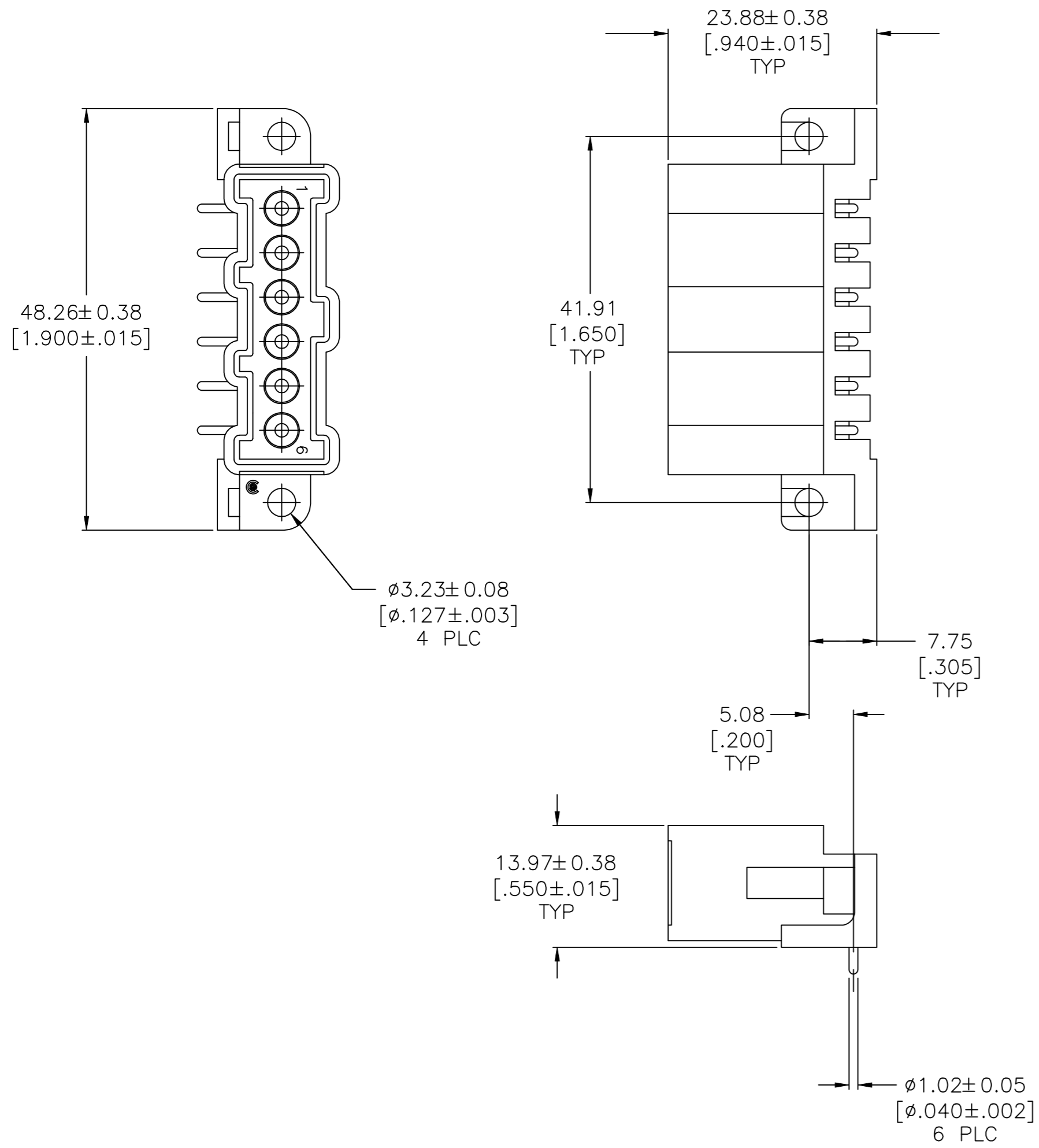


THIS DRAWING IS UNPUBLISHED. RELEASED FOR PUBLICATION
 © COPYRIGHT - TE Connectivity ALL RIGHTS RESERVED.

REVISIONS					
P	LTR	DESCRIPTION	DATE	DWN	APVD
G		REVISED PER 0G3B-0168-05	3/10/05	SS	GS
G1		REVISED PER ECO-09-021826	12JAN10	KK	AEG
H		REVISED PER ECO-17-011181	03AUG2017	RS	MZ
J		REVISED PER ECO-18-000443	30JAN2018	RS	MZ



- ① THERMOPLASTIC, RED.
- ② BRASS PER ASTM B36.
- ③ $3.81 \mu\text{m}$ [.000150] MIN TIN-LEAD OVER $2.54 \mu\text{m}$ [.000100] MIN COPPER.
- ④ $3.81 \mu\text{m}$ [.000150] MIN TIN OVER $2.54 \mu\text{m}$ [.000100] MIN COPPER.
- ⑤ OBSOLETE PARTS: OBSOLETE CIS STREAMLINING PER D.RENAUD/D.SINISI

⑤	OBSOLETE	④	12.83 [.505]	208116-5
		④	3.05 [.120]	208116-4
	OBSOLETE	③	12.83 [.505]	208116-3
	OBSOLETE	③	3.05 [.120]	208116-1
		CONTACT FINISH	L	PART NUMBER

THIS DRAWING IS A CONTROLLED DOCUMENT. DWN J.MCCLINTON 11/06/91
 CHK R. STONE 11-8-91

TE TE Connectivity

HEADER ASSEMBLY, PIN, 6 POSITION, METRIMATE

DIMENSIONS: mm [INCHES]	TOLERANCES UNLESS OTHERWISE SPECIFIED:	APVD	NAME
	0 PLC ± -		
	1 PLC ± -		
	2 PLC ± 0.25 [.010]		
	3 PLC ± -		
	4 PLC ± -		
	ANGLES ± -		
MATERIAL HOUSING: ①	FINISH CONTACTS: SEE TABLE	WEIGHT	SIZE CAGE CODE DRAWING NO RESTRICTED TO
CONTACTS: ②			A2 00779 C=208116
		CUSTOMER DRAWING	SCALE 2:1 SHEET 1 of 1 REV J