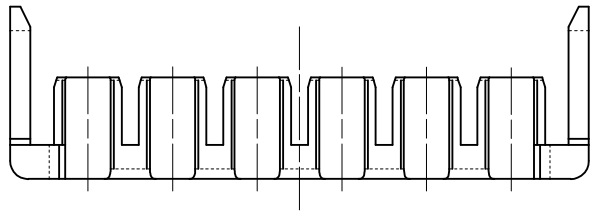
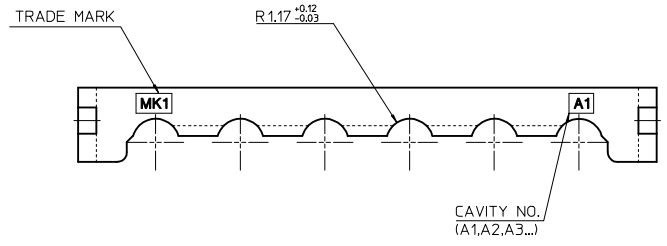
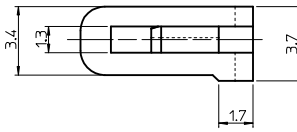
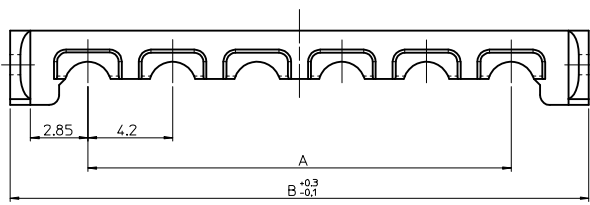
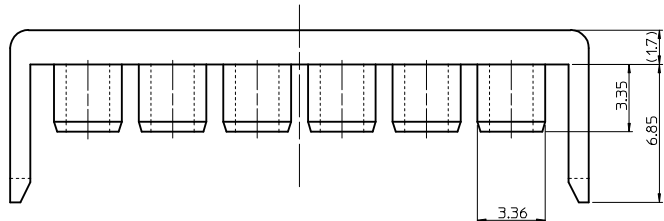
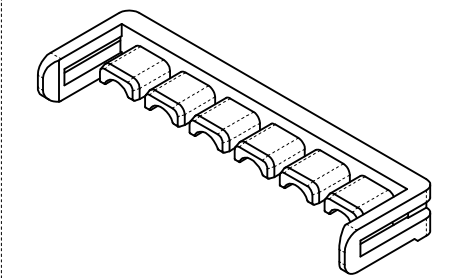


10 9 8 7 6 5 4 3 2 1



49627-1182	496271182	42	49.5	11
49627-1082	496271082	37.8	45.3	10
49627-0982	496270982	33.6	41.1	9
49627-0682	496270682	21.0	28.5	6
ENG NO.	MATREIAL NO.	A	B	CIRCUIT

NOTES

- ①. MATERIAL : POLYAMIDE(PA66), GLASS FILLED, UL94V-HB  
COLOR : BLUE
  - 2. APPLICABLE TERMINAL : 5556 T2A SERIES, 5556 T SERIES
  - 3. MATED WITH HOUSING : 49624-\*\*9\* SERIES
  - 4. PRODUCT SPECIFICATION : PS-49623-001
- CIRCUIT SIZE : 12/18/20/22

REVISED  
 EC NO: KOR2016-0042  
 DRWNS:CHONG03 2015/11/02  
 CHKD:  
 APPR:YSK1M02 2016/10/31

QUALITY SYMBOLS	GENERAL TOLERANCES (UNLESS SPECIFIED)	
	mm	INCH
▽=0	4 PLACES ± ---	± ---
∇=0	3 PLACES ± ---	± ---
	2 PLACES ± 0.3	± ---
	1 PLACE ± 0.3	± ---
	0 PLACE ± ---	± ---
	ANGULAR ± 1 °	
	DRAFT WHERE APPLICABLE MUST REMAIN WITHIN DIMENSIONS	

DIMENSION STYLE  
MM ONLY

DRAWN BY SK.HAN DATE 2008/01/28

CHECKED BY WY.YANG DATE 2008/01/28

APPROVED BY EH.JUNG DATE 2008/01/28

MATERIAL NO. SEE TABLE

SCALE 4:1 DESIGN UNITS METRIC THIRD ANGLE PROJECTION

TITLE 4.2MM W/W TPA CONN. TPA FOR FEMALE HOUSING

**molex**

DOCUMENT NO. SD-49627-001 SHEET NO. 1 OF 1

THIS DRAWING CONTAINS INFORMATION THAT IS PROPRIETARY TO MOLEX INCORPORATED AND SHOULD NOT BE USED WITHOUT WRITTEN PERMISSION

9 8 7 6 5 4 3 2 1