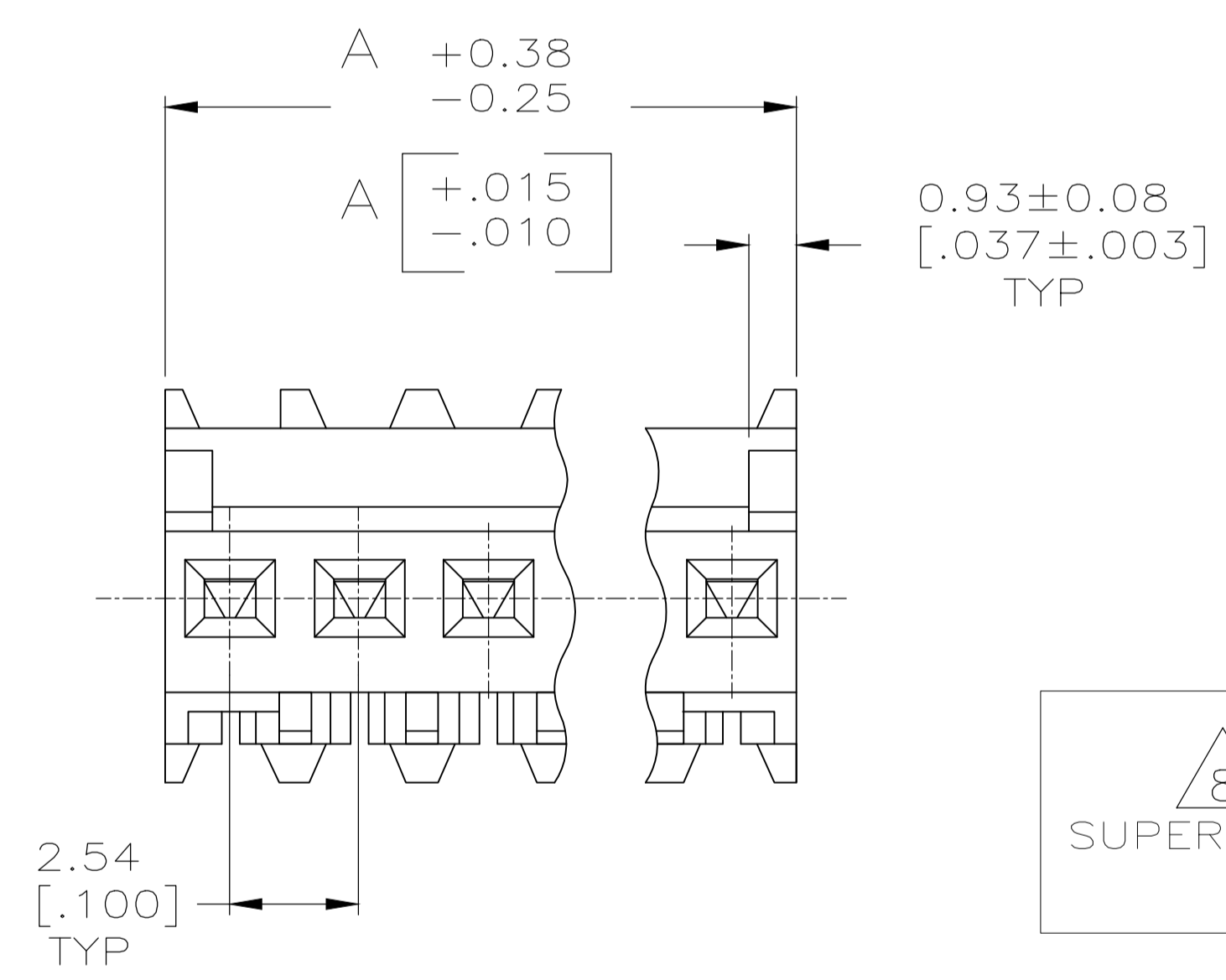
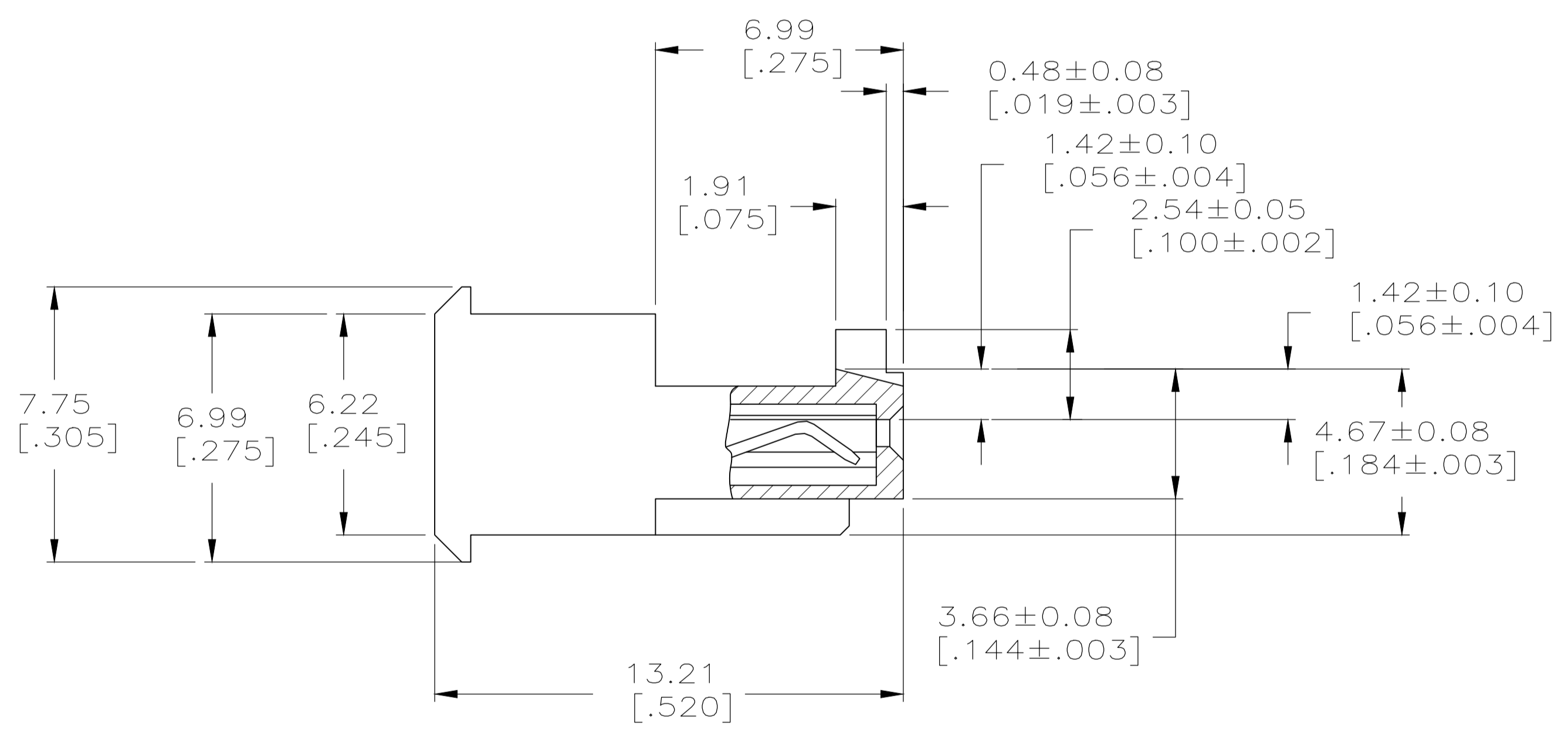
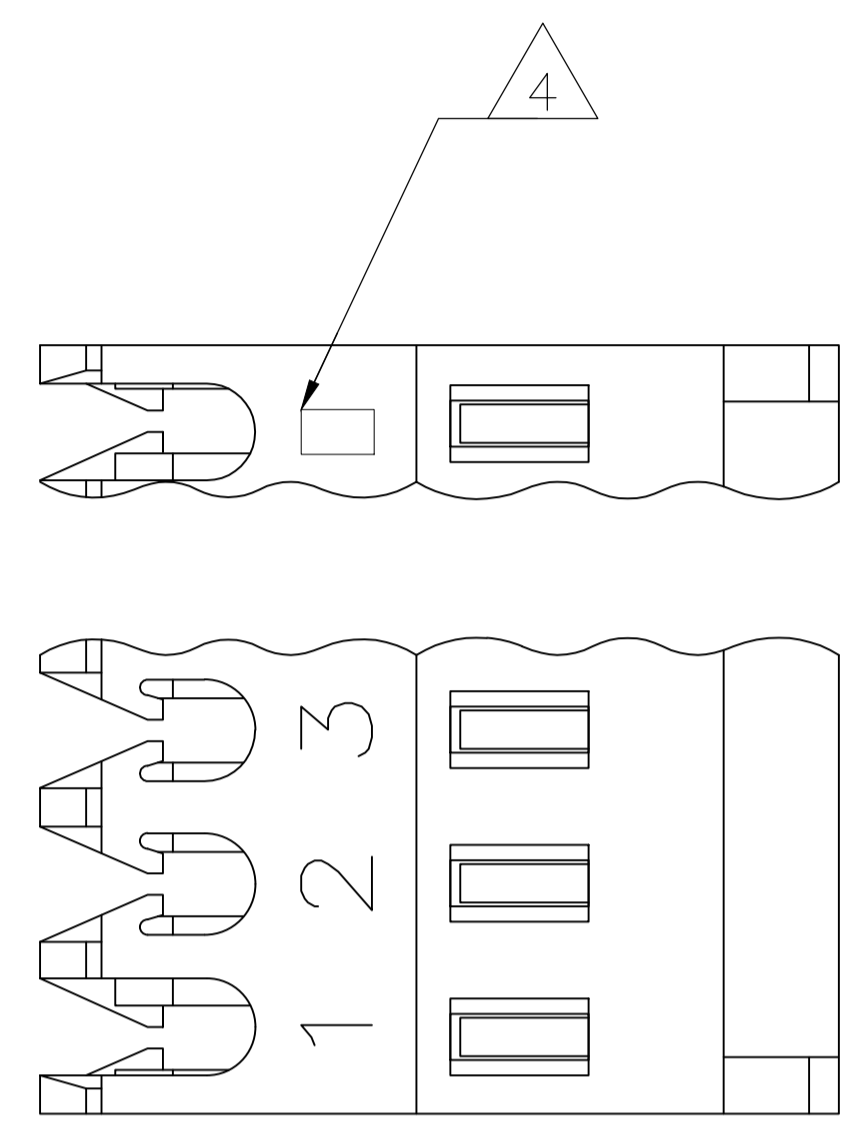


LOC		DIST		REVISIONS			
CM	00	REV	DATE	BY	APP'D	DATE	BY
N	REVISED PER	ECR-20-000541	09MAR2020	PC	SW		

- 1 MATERIAL: CONNECTOR - NYLON UL94V-2 (RED).  
 CONTACTS - 0.30[.012] THICK COPPER ALLOY  
 0.00076[.000030] GOLD OR 0.00076[.000030]  
 TOTAL GOLD FLASH OVER PALLADIUM NICKEL,  
 PER TE CONNECTIVITY'S DISCRETION, IN CONTACT AREA  
 WITH MATTE TIN SLOT AREA FOR 644702-2  
 THRU1-644702-6  
 OR MATTE WHISKER MITIGATED TIN FOR 3-644702-2
- 2 THRU 4-644702-6 OVER NICKEL UNDERPLATE.
- 3 CONTACTS ACCEPT 22 AWG WIRE WITH 1.52 [.060] MAX  
 INSULATION DIAMETER.
- 4 CONTACTS MUST ACCEPT 0.64±0.03 [.025±.001] SQUARE POST  
 AND REMAIN LOCKED IN POSITION.
- 5 IDENTIFICATION NUMBER FOR LAST CIRCUIT MAY NOT APPEAR ON ALL  
 ASSEMBLIES.
- 6 DIMENSIONS IN BRACKETS ARE IN INCHES.
- 7 HOUSING FEATURES ARE: FEED THRU WITH LOCKING RAMP AND  
 POLARIZING TAB.
- 8 OBSOLETE PARTS: OBSOLETE CIS STREAMLINING PER  
 D.RENAUD/D.SINISI



TIN	40.64	[1.600]	16	4-644702-6
TIN	38.10	[1.500]	15	4-644702-5
TIN	35.56	[1.400]	14	4-644702-4
TIN	33.02	[1.300]	13	4-644702-3
TIN	30.48	[1.200]	12	4-644702-2
TIN	27.94	[1.100]	11	4-644702-1
TIN	25.40	[1.000]	10	4-644702-0
TIN	22.86	[.900]	9	3-644702-9
TIN	20.32	[.800]	8	3-644702-8
TIN	17.78	[.700]	7	3-644702-7
TIN	15.24	[.600]	6	3-644702-6
TIN	12.70	[.500]	5	3-644702-5
TIN	10.16	[.400]	4	3-644702-4
TIN	7.62	[.300]	3	3-644702-3
TIN	5.08	[.200]	2	3-644702-2

8 SUPERSEDED

8 SUPERSEDED

8 SUPERSEDED

TIN-LEAD	40.64	[1.600]	16	1-644702-6
TIN-LEAD	38.10	[1.500]	15	1-644702-5
TIN-LEAD	35.56	[1.400]	14	1-644702-4
TIN-LEAD	33.02	[1.300]	13	1-644702-3
TIN	30.48	[1.200]	12	1-644702-2
TIN-LEAD	27.94	[1.100]	11	1-644702-1
TIN	25.40	[1.000]	10	1-644702-0
TIN	22.86	[.900]	9	644702-9
TIN	20.32	[.800]	8	644702-8
TIN	17.78	[.700]	7	644702-7
TIN-LEAD	15.24	[.600]	6	644702-6
TIN-LEAD	12.70	[.500]	5	644702-5
TIN-LEAD	10.16	[.400]	4	644702-4
TIN-LEAD	7.62	[.300]	3	644702-3
TIN	5.08	[.200]	2	644702-2

FINISH	DIM A	NO. OF POSN	ASSEMBLY

THIS DRAWING IS A CONTROLLED DOCUMENT. **STE** TE Connectivity

DIMENSIONS: mm [INCHES]	TOLERANCES UNLESS OTHERWISE SPECIFIED:	DIN S. HOOVER 28-DEC-2004	APPROVED D. ROSSI 28-DEC-2004
0 PLC ±	1 PLC ±	2 PLC ±	3 PLC ± 0.13 [.005]
4 PLC ±	ANGLES ±	PRODUCT SPEC	108-1050
MATERIAL	FINISH	APPLICATION SPEC	114-1019
		WEIGHT	A1 00779 644702
		CUSTOMER DRAWING	SCALE 8:1 SHEET 1 OF 1 REV N