

1

2

3

4

5

6

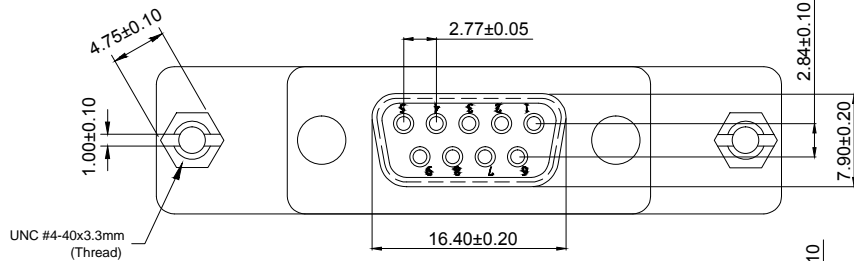
7

A

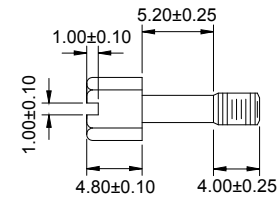
A

B

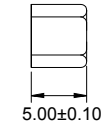
B



① UNC #4-40 Hexscrew

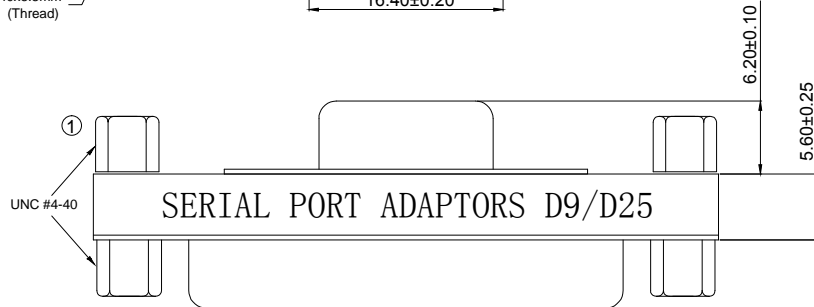


① UNC #4-40 Hexnut



C

C



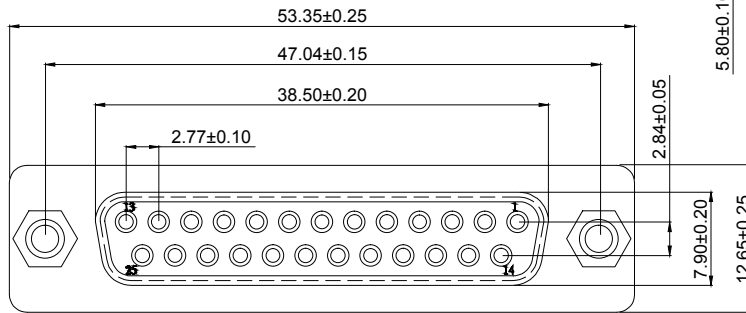
MA 001D (DB9F/25F ADAPTOR)

PIN OUT: 09Female 25Female

1	8
2	3
3	2
4	20
5	7
6	6
7	4
8	5
9	22
G	G

D

D



E

E

Label: Orange color with white character  
 One side: SERIAL PORT ADAPTOR D9/D25  
 The other side: MINI ADAPTER  
 SPECIFICATION  
 INSULATOR: PBT Glass fiber reinforced UL94 V-0  
 CONTACT: Brass  
 CONTACT PLATING: Gold plated over nickel  
 SHELL: Tin plated shell

F

F

G

G

Scale	Free					Date	Name	Customer-No.	
TOLERANCE					Drawn	08.04.2017	Winnie		
X.X	0.20				Approved	08.04.2017	Winnie	ASSMANN WSW-No.	
X.XX	±0.15							AB469	
X.XXX	±0.05							Drawing-No.	
DIM	TOL	①	Add UNC #4-40 Hexscrew & Hexnut	31.08.2018	Xavier			ASS 7555 CO	rev01
		②	Drawn	08.04.2017	Winnie			Replace	Sheet
Angle	TOL	Id.	Modification	Date	Name				

H

H

RoHS compliant  
Unit: mm

1

2

3

4

5

6

7