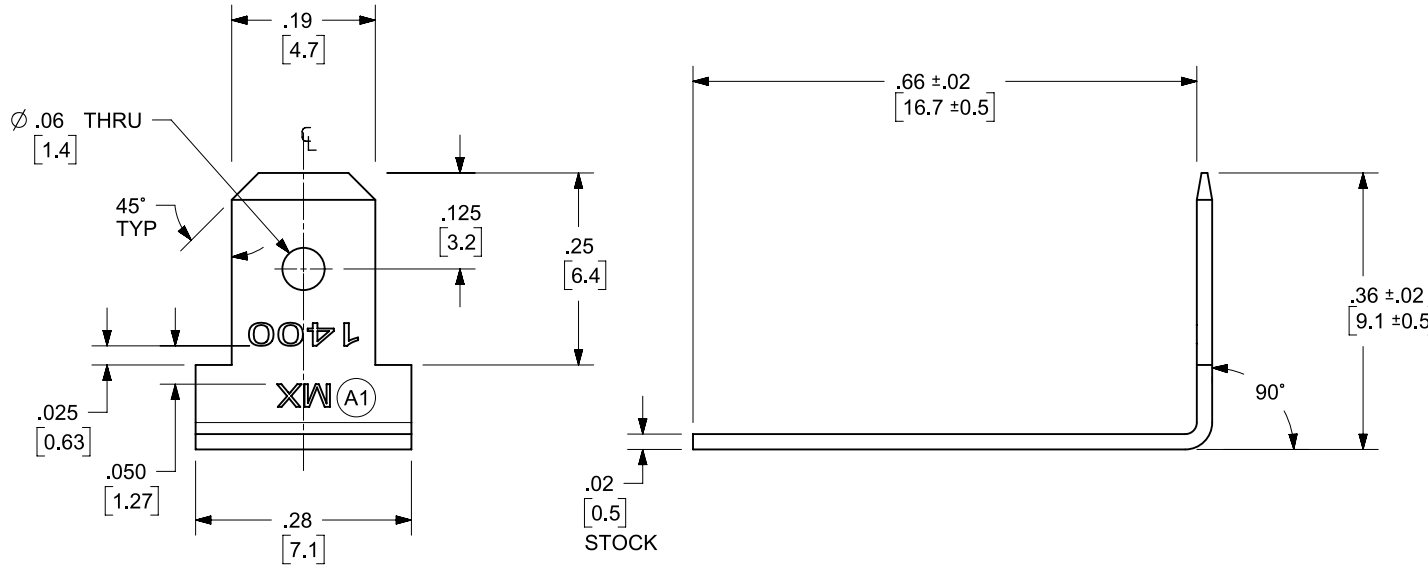
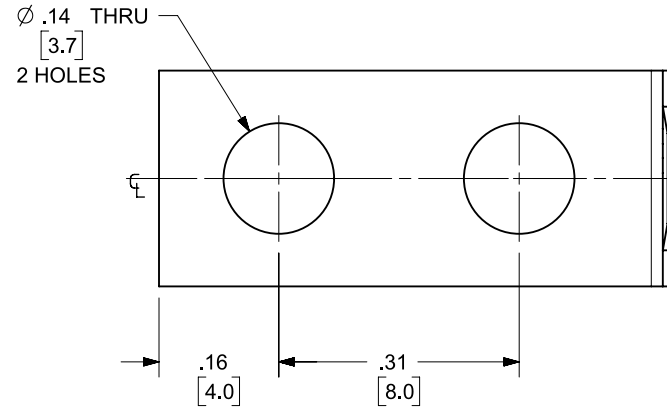


MATERIAL NO.	ENGINEERING NO	DESCRIPTION	MATERIAL	FINISH
380020183	1415	TERMINAL, FAST-TAB VR	BRASS	TIN OVER COPPER PLATED

NOTES:  
 1. ALL DIM'S SHOWN ARE BEFORE PLATING.  
 2. PART IS RoHS COMPLIANT.



FUNCTIONAL SYMBOLS $\nabla_A = 0$ $\nabla_F = 0$ $\nabla_P = 0$	THIS DRAWING CONTAINS INFORMATION THAT IS PROPRIETARY TO MOLEX ELECTRONIC TECHNOLOGIES, LLC AND SHOULD NOT BE USED WITHOUT WRITTEN PERMISSION	CURRENT REV DESC: "MX" WAS "BEAU"						
	DIMENSION UNITS	SCALE	EC NO: 650468					DRWN: RMV02 2020/11/13
	in/[mm]	4:1	DRWN: DMYRICK 2020/12/04		DRWN: DRWN BY XXXX/XX/XX			
	GENERAL TOLERANCES (UNLESS SPECIFIED)		APPR: EJOHNSON04 2020/12/18		APPR: APPR BY XXXX/XX/XX			
DIVISIONAL SYMBOLS	4 PLACES ±	±	INITIAL REVISION:		DOCUMENT NUMBER	DOC TYPE	DOC PART	REVISION
	3 PLACES ±	± 0.005	DRWN: DRWN BY		SD-38002-0183	PSD	001	A1
	2 PLACES ±	± 0.13 ± 0.01	APPR: APPR BY		MATERIAL NUMBER	CUSTOMER		SHEET NUMBER
	1 PLACE ±	± 0.3 ±	THIRD ANGLE PROJECTION		SEE TABLE	GENERAL MARKET		1 OF 1
0 PLACES ±	±	DRAWING		CUSTOMER				
ANGULAR TOL ± 2.0 °	±	SERIES		CUSTOMER				
DRAFT WHERE APPLICABLE MUST REMAIN WITHIN DIMENSIONS	A-SIZE		38002		GENERAL MARKET			

DOCUMENT STATUS	P1	RELEASE DATE	2020/12/18	14:47:47
-----------------	----	--------------	------------	----------