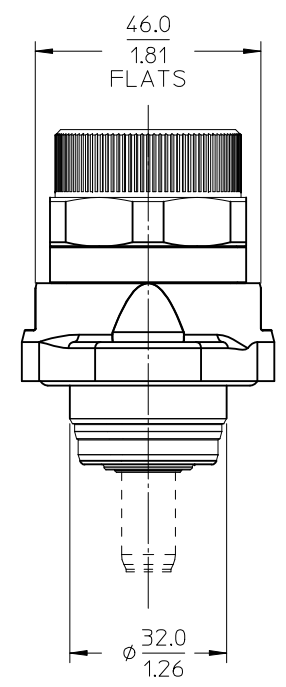
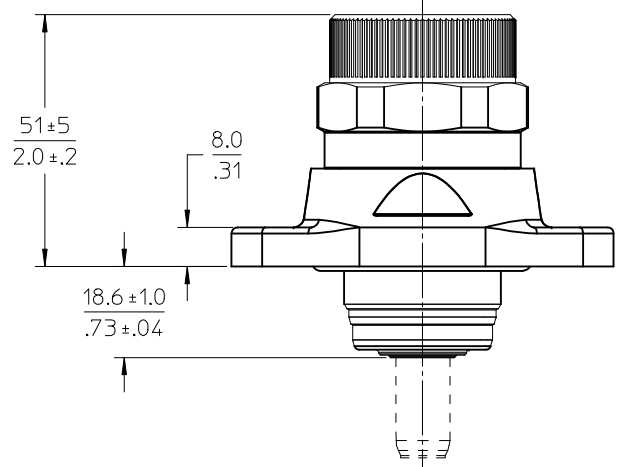
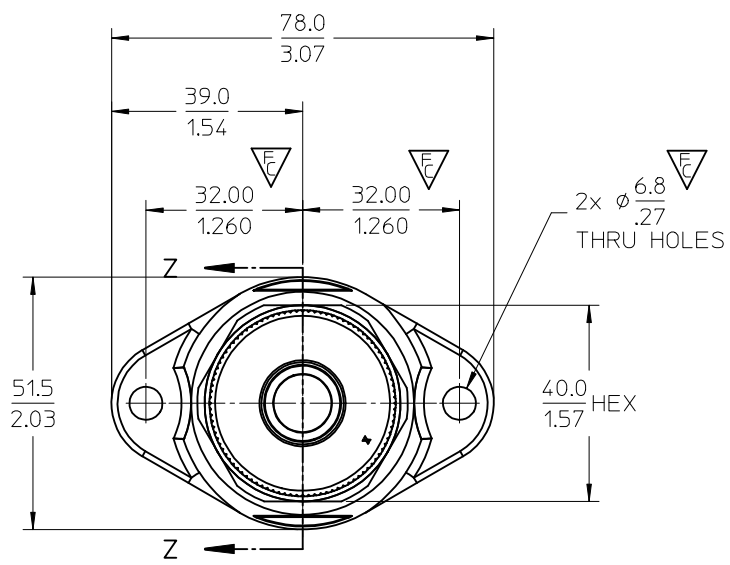


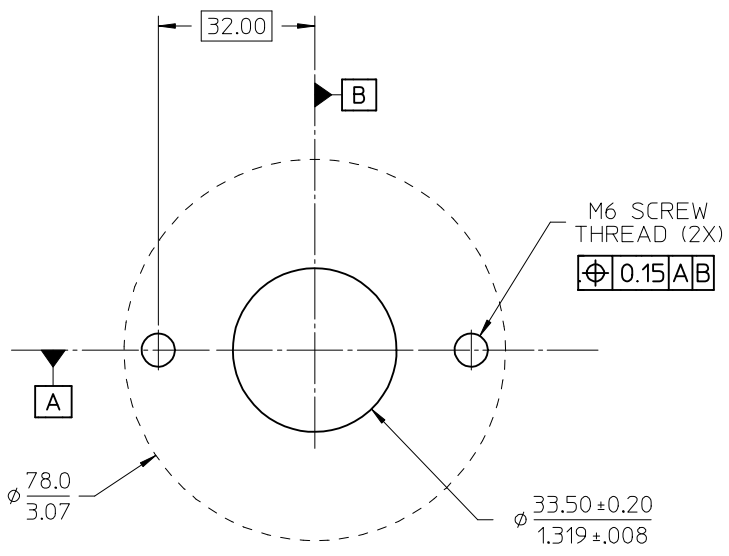
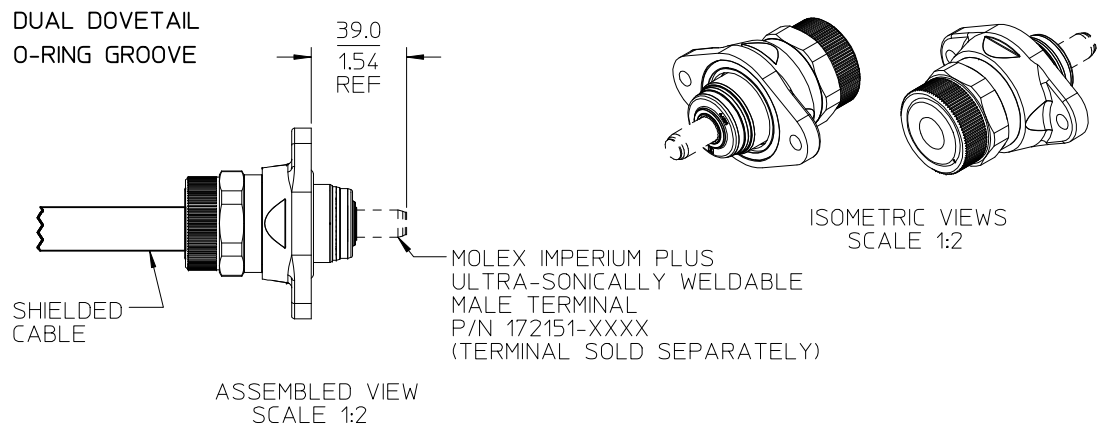
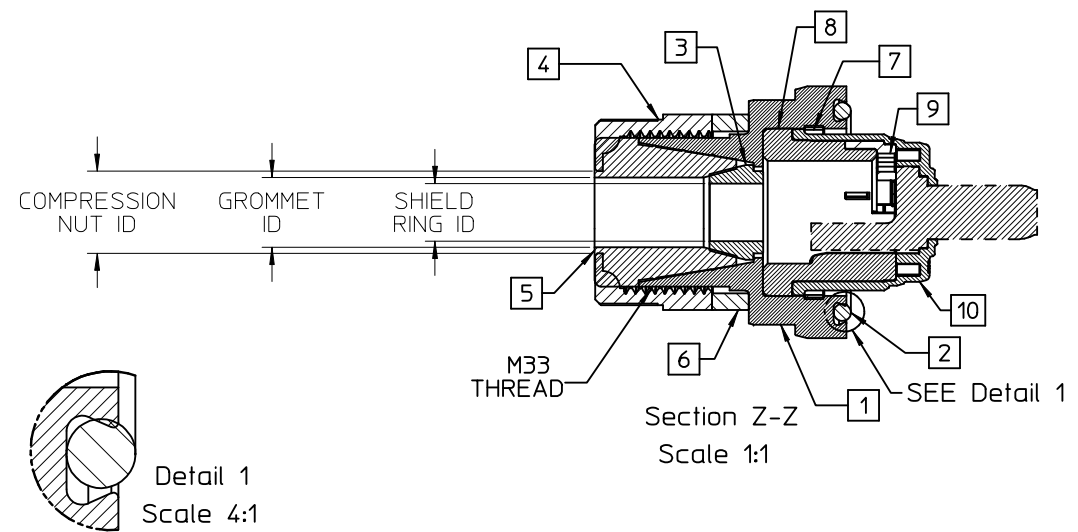
10	9	8	7	6	5	4	3	2	1
SINGLE ASSEMBLY PART NO.	KIT ASSEMBLY PART NO.	WIRE AWG	GROMMET	COLOR	O-RING	COLOR	CABLE SEALING RANGE		
1301990085	1301990185	1 & 35mm <sup>2</sup>	HNBR	BLACK	HNBR	BLACK	11.10/.437 - 14.27/.562		
1301990090	1301990190	1/0	HNBR	BLACK	HNBR	BLACK	14.27/.562 - 15.88/.625		
1301990095	1301990195	2/0	HNBR	BLACK	HNBR	BLACK	15.88/.625 - 17.45/.687		
1301990285	1301990385	1 & 35mm <sup>2</sup>	SILICONE	RUST RED	SILICONE	RUST RED	11.10/.437 - 14.27/.562		
1301990290	1301990390	1/0	SILICONE	RUST RED	SILICONE	RUST RED	14.27/.562 - 15.88/.625		
1301990295	1301990395	2/0	SILICONE	RUST RED	SILICONE	RUST RED	15.88/.625 - 17.45/.687		



- NOTES:  
 1. MATERIALS:  
 GRIP BODY: ALUMINUM ALLOY  
 FINISH: ELECTROLESS NICKEL PLATING  
 COMPRESSION NUT: ALUMINUM ALLOY  
 FINISH: ELECTROLESS NICKEL PLATING  
 SHIELD RING: ALUMINUM ALLOY  
 FINISH: ELECTROLESS NICKEL PLATING  
 STOP RING: ALUMINUM ALLOY  
 FINISH: ELECTROLESS NICKEL PLATING  
 GROMMET: SEE CHART  
 HNBR HARDNESS: SHORE 70A DUROMETER  
 SILICONE HARDNESS: SHORE 70A DUROMETER  
 O-RING: SEE CHART  
 HNBR HARDNESS: SHORE 90A DUROMETER  
 SILICONE HARDNESS: SHORE 70A DUROMETER  
 INSULATING RETAINER SUB-ASSEMBLY: PBT  
 COLOR: BLACK, FLAMMABILITY: UL94 V-0  
 RETAINING RING: CARBON STEEL  
 2. PRODUCT SPECIFICATION: PS-130199-002  
 3. PACKAGING SPECIFICATION: PK-130199-001 & PK-130199-003  
 4. APPLICATION SPECIFICATION: RAS-130199-001  
 5. ALL MATERIALS ARE ROHS COMPLIANT.

UPDATE WITH CRITICALS EC NO: IPG2016-0676 DRW: WLEUNG 2015/12/11 CHKD: GSUDHINI 2015/12/11 APPR: BWOODMAN 2016/01/13	DESCRIPTION REV	QUALITY SYMBOLS	GENERAL TOLERANCES (UNLESS SPECIFIED)	DIMENSION STYLE	SCALE	DESIGN UNITS	THIRD ANGLE PROJECTION																		
		$\nabla F/0$ $\nabla F/3$ $\nabla F/0$	<table border="1"> <thead> <tr> <th></th> <th>mm</th> <th>INCH</th> </tr> </thead> <tbody> <tr> <td>4 PLACES</td> <td>± ---</td> <td>± ---</td> </tr> <tr> <td>3 PLACES</td> <td>± ---</td> <td>± .015</td> </tr> <tr> <td>2 PLACES</td> <td>± 0.40</td> <td>± .03</td> </tr> <tr> <td>1 PLACE</td> <td>± 0.8</td> <td>± ---</td> </tr> <tr> <td>0 PLACE</td> <td>± ---</td> <td>± ---</td> </tr> </tbody> </table>		mm	INCH	4 PLACES	± ---	± ---	3 PLACES	± ---	± .015	2 PLACES	± 0.40	± .03	1 PLACE	± 0.8	± ---	0 PLACE	± ---	± ---	MM/IN	1:1	METRIC	
			mm	INCH																					
		4 PLACES	± ---	± ---																					
3 PLACES	± ---	± .015																							
2 PLACES	± 0.40	± .03																							
1 PLACE	± 0.8	± ---																							
0 PLACE	± ---	± ---																							
DRAWN BY: WLEUNG DATE: 2014/08/25 CHECKED BY: BRUPERT DATE: 2014/08/29 APPROVED BY: BWOODMAN DATE: 2014/10/13	TITLE <b>PLUGGABLE MAX-LOC PLUS SHIELDED CORD GRIP ASSY 1AWG-2/0, M33 THD, WELD</b>		<b>molex</b>		DOCUMENT NO.	SHEET NO.																			
MATERIAL NO. <b>SEE CHART</b>		DRAFT WHERE APPLICABLE MUST REMAIN WITHIN DIMENSIONS		SD-130199-006		1 OF 2																			

ITEM NO.	DESCRIPTION
1	GRIP BODY, M33 THREAD
2	O-RING, AS-568-222
3	SHIELD RING (1 AWG & 35MM <sup>2</sup> ), 14.6MM/0.57" ID SHIELD RING (1/0 AWG), 15.6MM/0.62" ID SHIELD RING (2/0 AWG), 18.9MM/0.74" ID
4	COMPRESSION NUT (1AWG & 35MM <sup>2</sup> ), 16.8MM/.66" ID COMPRESSION NUT (1/0AWG), 18.40MM/.73" ID COMPRESSION NUT (2/0AWG), 20.0MM/.79" ID
5	GROMMET (1 AWG & 35MM <sup>2</sup> ), 14.3MM/.56" ID GROMMET (1/0 AWG), 15.9/.63" ID GROMMET (2/0 AWG), 17.5MM/.69" ID
6	STOP RING, 33MM ID, 7.5MM THICK
7	RETAINING RING
8	INSULATING RETAINER, MAIN, FOR $\phi$ 18.5MM WELD TERMINAL
9	INSULATING RETAINER, CLIP, FOR $\phi$ 18.5MM WELD TERMINAL
10	INSULATING RETAINER, CAP, FOR $\phi$ 18.5MM WELD TERMINAL



SEAL SURFACE ZONE  
WITHIN  $\phi$ 78.0 AREA:  
SURFACE FINISH REQUIRED  $\nabla$  3.2/  
FLATNESS REQUIRED  $\square$  0.2

UPDATE: ADD. O-RING GROOVE EC NO: IPG2016-0676 2015/12/11 DRAWN: WLEUNG CHKD: GSUDHINI APPR: BWOODMAN 2015/12/11 2016/01/13 DESCRIPTION	QUALITY SYMBOLS	GENERAL TOLERANCES (UNLESS SPECIFIED)	DIMENSION STYLE	SCALE	DESIGN UNITS	THIRD ANGLE PROJECTION
	$\nabla$ F/0	mm INCH	MM/IN	1:2	METRIC	$\circledast$ $\square$
	$\nabla$ E/0	4 PLACES ± --- ± ---	DRAWN BY DATE	WLEUNG 2014/08/25	TITLE	PLUGGABLE MAX-LOC PLUS SHIELDED CORD GRIP ASSY 1AWG-2/0, M33 THD, WELD <b>molex</b>
	$\nabla$ F/0	3 PLACES ± --- ± .015	CHECKED BY DATE	BRUPERT 2014/08/29	DOCUMENT NO.	
	2 PLACES ± 0.40 ± .03	APPROVED BY DATE	BWOODMAN 2014/10/13	MATERIAL NO.	SHEET NO.	2 OF 2
	1 PLACE ± 0.8 ± ---	DRAFT WHERE APPLICABLE MUST REMAIN WITHIN DIMENSIONS		SEE CHART	THIS DRAWING CONTAINS INFORMATION THAT IS PROPRIETARY TO MOLEX INCORPORATED AND SHOULD NOT BE USED WITHOUT WRITTEN PERMISSION	
	0 PLACE ± --- ± ---			SIZE B		