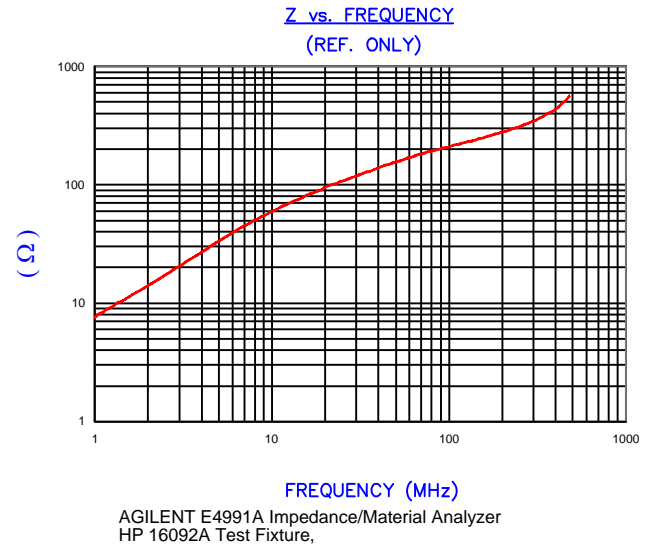


IMPEDANCE (Z)			
Frequency	25 MHz	100 MHz	300 MHz
Nominal (REF)	109 Ω	211 Ω	344 Ω
Minimum	- Ω	169 Ω	- Ω



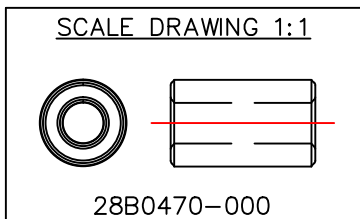
FERRITE CORE DIMENSIONS (SPEC):mm [Inches]

A	12.00 [.472]	+	0.20 [.008]
B	5.60 [.220]	+	0.13 [.005]
C	20.00 [.787]	+	0.76 [.030]

WEIGHT/1000: 8.67 kgs 19.11 Lbs.

NOTES: UNLESS OTHERWISE SPECIFIED

1. NO SHARP EDGES
2. COSMETIC SPECIFICATION REFER TO WI-QA-038.



DIMENSIONS ARE IN mm [INCHES].				This print is the property of Laird Tech. and is loaned in confidence subject to return upon request and with the understanding that no copies shall be made without the written consent of Laird Tech. All rights to design or invention are reserved.		Laird	
				PROJECT/PART NUMBER:	REV	PART TYPE:	DRAWN BY:
				28B0470-000	B	FERRITE CORE	Jcai
B	UPDATED LOGO ADD NOTE2	07/31/17	QIU	DATE:	11/01/09	SCALE:	2.5:1
A	ORIGINAL DRAFT	11/01/09	Jcai	CAD #		TOOL #	B0470
REV	DESCRIPTION	DATE	INT	28B0470-000-B		MATERIAL: Ferrite	