



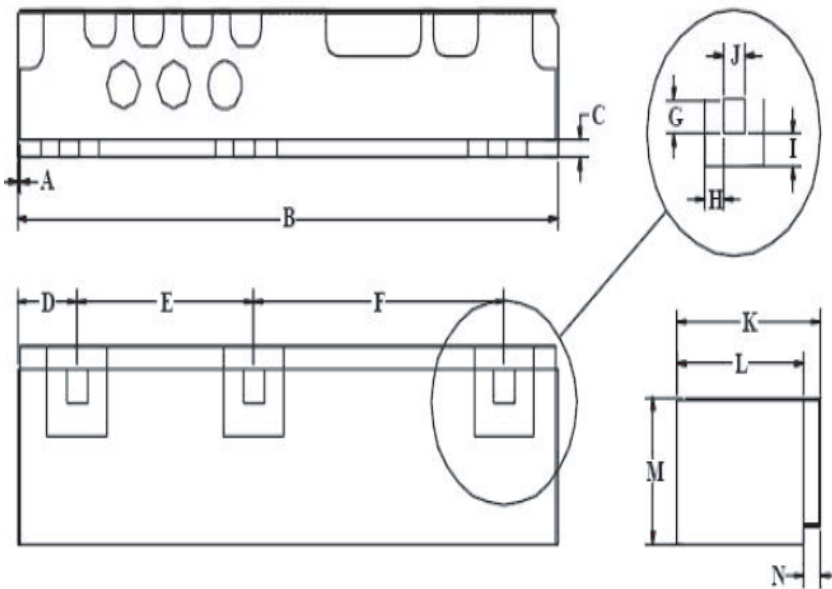
<u>Characteristics</u>	<u>Band 1</u>	<u>Band 2</u>
Passband:	1850-1910 MHz	1930-1990 MHz
Bandwidth:	60 MHz	60 MHz
Passband Return Loss:	11 dB min	11 dB min
Passband Insertion Loss:	3.2 dB max	3.7 dB max
Passband Ripple:	2.6 dB max	3.0 dB min
Input / Output Impedance:	50 Ohms	50 Ohms
Isolation:	56 dB min	47 dB min
Power Handling:	2 W max	2 W max

<u>Mechanical</u>	
Mounting Method:	SMT
Dimensions:	23.18 x 6.52 x 4.60 mm

<u>Environmental</u>	
Operating Temperature:	-40 to +70 deg.C
Storage Temperature:	-50 to +90 deg.C

This product is RoHs compliant.

Outline Drawing:



Dim	Nominal (mm)	Tolerance (mm) +/- or max
A	0.25	0.25
B	23.18	max
C	0.33	min
D	2.50	0.25
E	7.43	0.13
F	10.52	0.13
G	1.00	0.13
H	0.80	0.13
I	1.00	0.13
J	0.90	0.13
K	6.52	max
L	5.51	0.13
M	4.60	max
*N	0.71	0.13

* Indicates Reference Only

Available at our Web store:

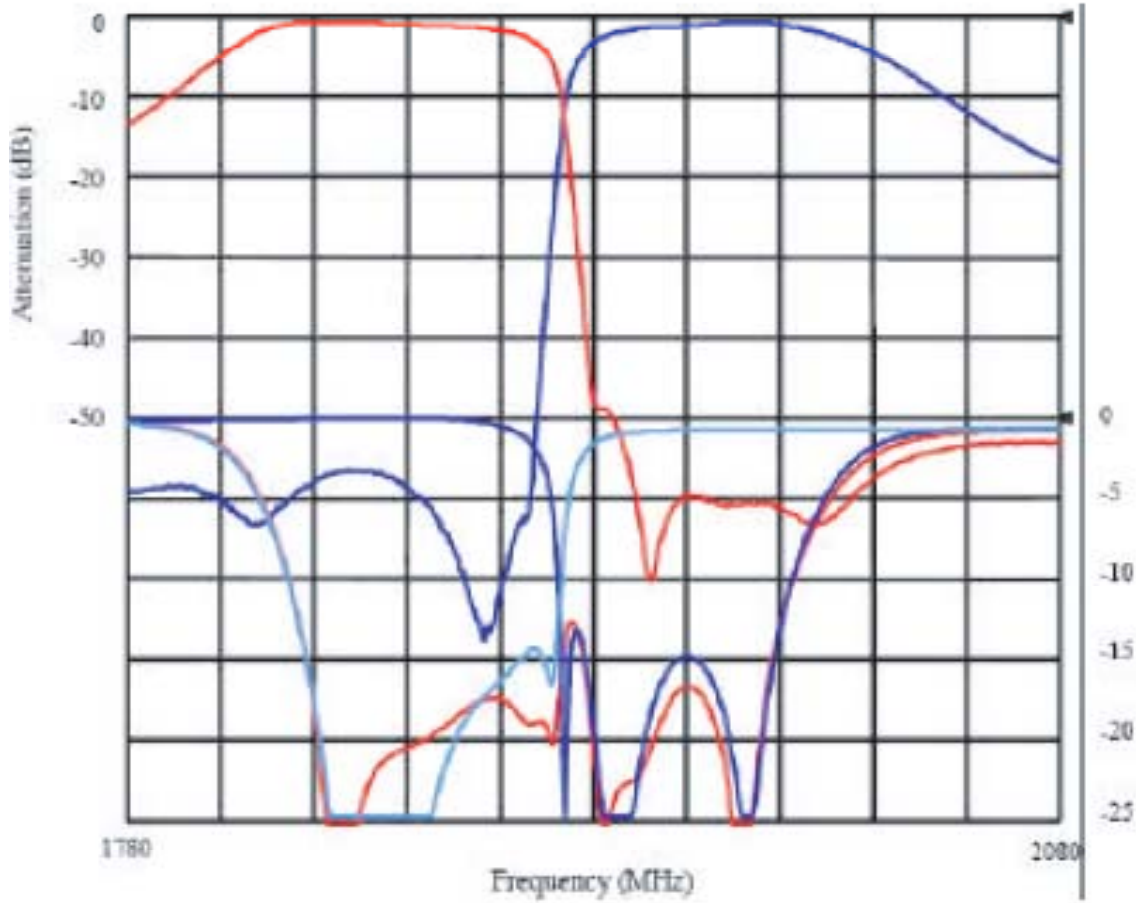


ANATECH ELECTRONICS INC
RF & Microwave Filters & Products

Part Number: AM1900D806



Response Plot:



Available at our Web store:



70 Outwater Lane Phone: (973) 772-4242
Garfield, NJ 07026 Fax : (973) 772-4646

Email: sales@anatechelectronics.com
Web: www.anatechelectronics.com