

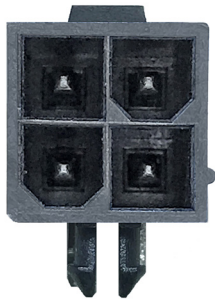
Mini-Fit Connector Family >

The Mini-Fit Connector Family delivers up to 13.0A, while blind-mating and terminal position assurance options provide a versatile connector system for a wide range of applications

FEATURES AND ADVANTAGES

Fully isolated terminals

Protect against potential damage during handling



Polarized mating geometry

Helps ensure header and receptacle cannot be mated



Terminals feature a patented, elongated dimple design

Provide long wipe lengths and increased contact area for improved long-term reliability

Crimp terminals are produced from a proprietary, high-current alloy
Rated up to 13.0A per circuit

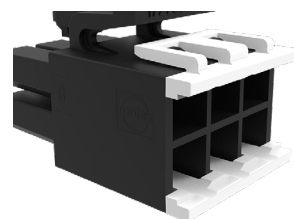


Self-aligning interface

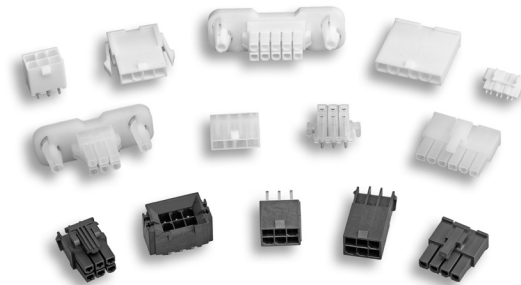
Enables operator to mate connectors in hard-to-reach areas

Panel mount and vertical header options

Maintain current-rating through application surfaces or panels



Mini-Fit Sigma Connector



Mini-Fit Connectors



Mini-Fit Plus Connectors



Select series offer up to 1,500 mating cycles with Gold terminals; standard series support 100 mating cycles with Gold-plated terminals; 75 mating cycles with tin-plated terminals

Ideal for applications requiring a high number of mating cycles

Blind-mating interface

Allows 2.54mm misalignment in x and y axis for all configurations



Terminal position assurance (TPA) with secondary locking feature

Reduces assembly errors and helps to ensure terminals are fully seated to avoid end-product failure

Receptacles and plugs accept both standard Mini-Fit and Mini-Fit Plug crimp terminals

Reduce the number of parts to be purchased and inventoried

Positive locking housings

Help ensure connectors are fully mated with easy-to-operate thumb latch. Helps to prevent accidental unmating

Mini-Fit Connector Family >

Backshell option available

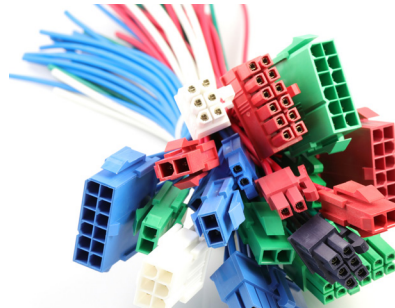
Secures cable. Provides strain relief



Mini-Fit Sigma Plugs

Panel mount and vertical header options

Maintain current-rating through application surfaces or panels



Mini-Fit Versa Color Connectors

Visual color pairing

(colors can be intermated)

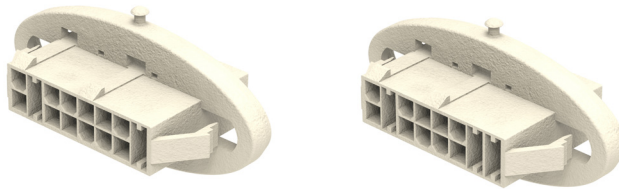
Reduces assembly errors and helps to ensure terminals are fully seated to avoid end-product failure

Robust latch design

Provides superior retention

V-0 Glow Wire combination resin

Reduces the cost of materials and labor and allows customers to meet the European standard for electrical requirements



Mini-Fit Sigma FIP Hybrid Connector

APPLICATIONS

Automotive

Harness manufacturers
Inside devices
Non-sealed applications

Commercial Vehicle

Electronic control modules

Consumer

Gaming equipment
Gaming machines
Vending machines

Data/Communications

Copiers
Printers

Home Appliance

White goods

Industrial

Industrial equipment
Power suppliers

Industrial Automation

Automation equipment
Food and beverage dispensers

Medical

Medical devices
X-rays

Telecommunications/Networking

Backplanes
Fan-tray assemblies
Rack-mount servers
Routers
Servers
Switches



Office Equipment



Industrial Automation



Vending Machines

Mini-Fit Connector Family >

SPECIFICATION

Reference Information

Packaging: Reel, Bag or Tray
UL File No.: E29179
CSA File No.: LR19980
Mates with: Other Mini-Fit and Mini-Fit Plus Housings
Use With: Mini-Fit and Mini-Fit Plus Terminals
Designed In: Millimeters
RoHS: Yes
Halogen Free: Yes, some series
Glow Wire Capable: Yes, some series

Electrical

Voltage (max.): 600V AC/DC
Current (max.): 9.0A (Mini-Fit); 13.0A (Mini-Fit Plus),
11.5A (Mini-Fit Sigma), 11.5A (Mini-Fit Versa Color)
Contact Resistance (max.): 10 milliohm
Dielectric Withstanding Voltage: 2200V AC
Insulation Resistance (min.): 1000 Megohms

Mechanical

Contact Insertion Force (max.): 15N
Contact Retention to Housing (min.): 30N
Insertion Force to PCB (max.): 98N
Mating Force (max.): 14.7N
Unmating Force (max.): 1N
Durability (min.): 75 Cycles (Tin); 100 Cycles (Gold),
1,500 for select options (Gold)

Physical

Flammability: UL 94V-0
Housing: Nylon
Plating:
Contact Area – Tin (Sn) or Gold (Au)
Tail Area – Tin (Sn)
Underplating – Nickel (Ni)
PCB Thickness: Multiple Options
Operating Temperature: -40 to +105°C

www.molex.com/link/minifit.html