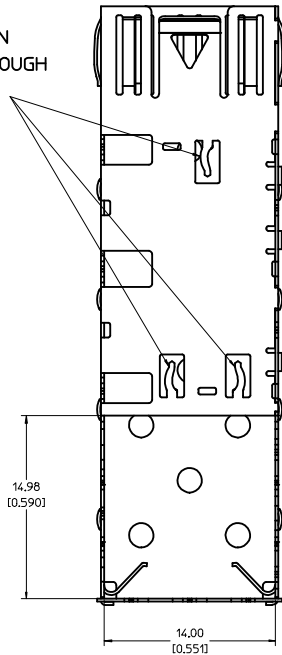
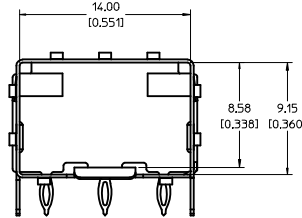
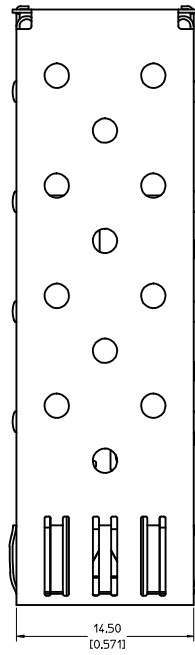


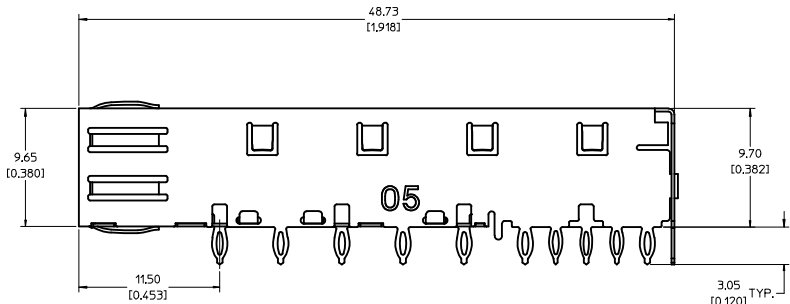
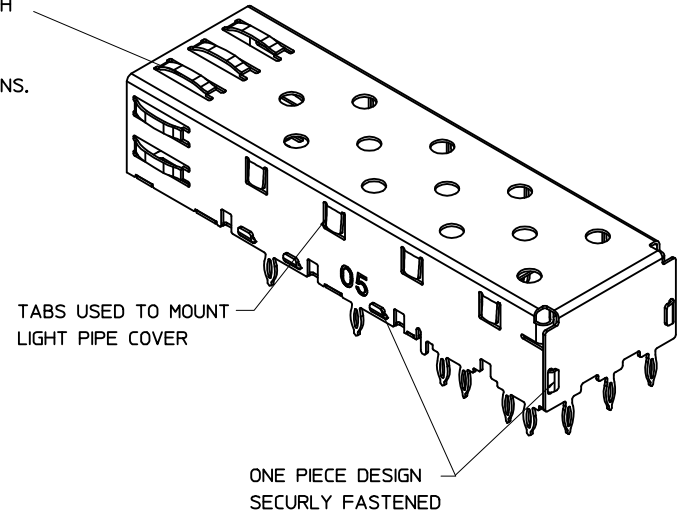
EMI PINS REMAIN  
FLAT. NO THROUGH  
HOLES IN PCB  
NECESSARY.



BOTTOM VIEW



SPRING FINGER GASKET WITH  
TWO POINTS OF CONTACT.  
COMPLIES WITH (SFP) MSA  
BOARD AND BEZEL LOCATIONS.

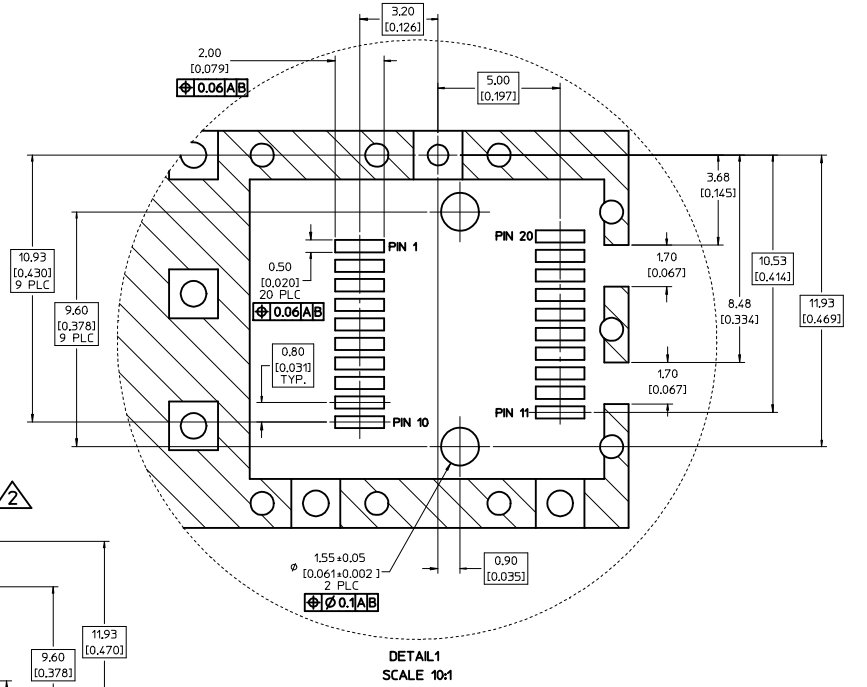
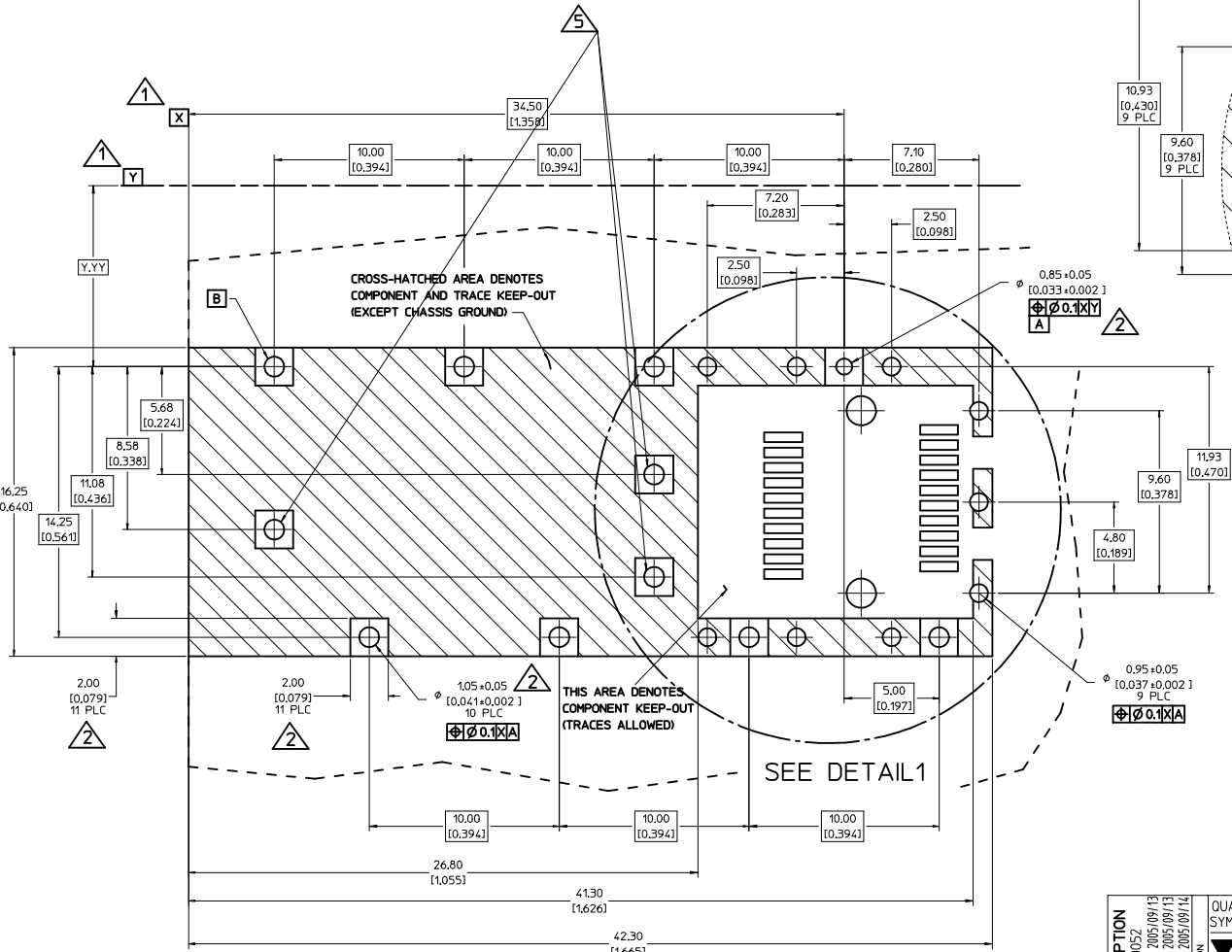


NOTES:

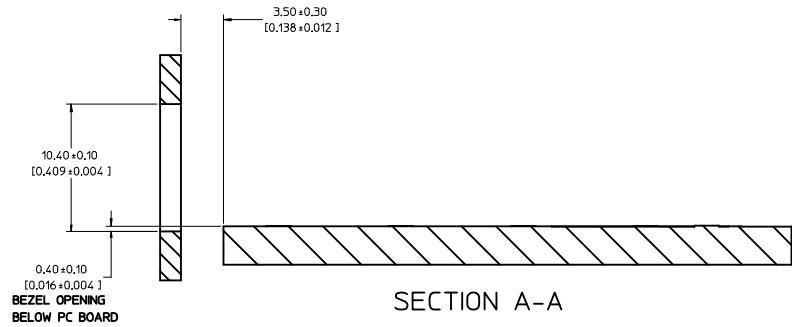
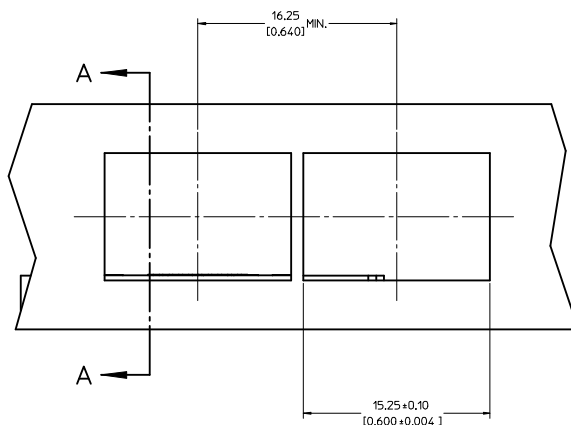
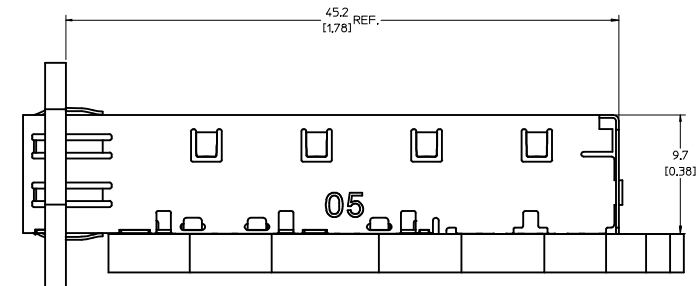
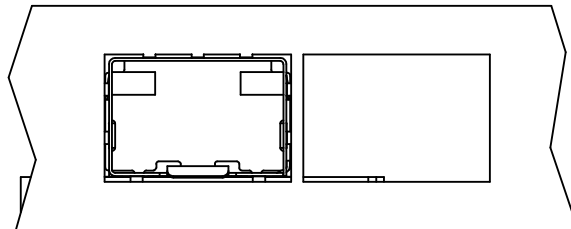
- PRESS FIT LEGS, 0.120 INCHES LONG.  
1.57 (0.062) MINIMUM PCB THICKNESS.
- THIS CAGE IS FOR SINGLE SIDED USE ONLY.
- CAN BE USED WITH THE FOLLOWING LIGHT PIPE PART NUMBERS:  
  
747260001 - LIGHT PIPE FROM BACK TO TOP  
(REFER TO DOCUMENT SD-74726-001)  
  
747260002 - LIGHT PIPE FROM SIDE TO TOP  
(REFER TO DOCUMENT SD-74726-002)
- MATERIAL: COPPER ALLOY  
PLATING: PRE-PLATED WITH NICKEL
- THIS PART MEETS THE RESTRICTION OF HAZARDOUS SUBSTANCES IN  
ELECTRICAL AND ELECTRONIC EQUIPMENT (ROHS) DIRECTIVE (2002/95/EC).

<b>ENTER DESCRIPTION</b> EC NO: USY2006-0052 DRAWN BY: KSI MONSON 2005/09/13 CHECKED BY: CHYOK BRUSSELL 2005/09/13 APPROVED BY: BRUSSELL 2005/09/14	<b>QUALITY SYMBOLS</b> ▽=0 ▽=0	<b>GENERAL TOLERANCES (UNLESS SPECIFIED)</b>		<b>DIMENSION STYLE</b> MM/IN	<b>SCALE</b> 5:1	<b>DESIGN UNITS</b> METRIC	THIRD ANGLE PROJECTION														
		<table border="1"> <tr> <th></th> <th>mm</th> <th>INCH</th> </tr> <tr> <td>4 PLACES</td> <td>±.005</td> <td>±.0005</td> </tr> <tr> <td>3 PLACES</td> <td>±.010</td> <td>±.0010</td> </tr> <tr> <td>2 PLACES</td> <td>±.015</td> <td>±.0015</td> </tr> <tr> <td>1 PLACE</td> <td>±.025</td> <td>±.0025</td> </tr> </table>		mm	INCH	4 PLACES	±.005	±.0005	3 PLACES	±.010	±.0010	2 PLACES	±.015	±.0015	1 PLACE	±.025	±.0025	DRAWN BY: KSI MONSON DATE: 2005/09/12	<b>TITLE</b> SFP ONE PIECE CAGE PRESS-FIT (0.120 LEGS) NO EMI PINS		
			mm	INCH																	
		4 PLACES	±.005	±.0005																	
3 PLACES	±.010	±.0010																			
2 PLACES	±.015	±.0015																			
1 PLACE	±.025	±.0025																			
DRAFT WHERE APPLICABLE MUST REMAIN WITHIN DIMENSIONS	APPROVED BY: BRUSSELL DATE: 2005/09/12	<b>MOLEX INCORPORATED</b>																			
<b>SIZE</b> D	<b>MATERIAL NO.</b> 747370005	<b>DOCUMENT NO.</b> SD-74737-0005	<b>SHEET NO.</b> 1 OF 3																		

- 1 DATUM AND BASIC DIMENSIONS ESTABLISHED BY CUSTOMER.
- 2 PADS AND VIAS ARE CHASSIS GROUND.
- 3 HOLE LAYOUT SHOWN IS FOR SINGLE SIDED MOUNTING ONLY.
- 4 CONNECTOR PAD LAYOUT PER SFP MSA, WILL ACCOMMODATE MOLEX CONNECTOR SERIES 74441 OR EQUIVALENT.
5. THESE HOLES OPTIONAL.

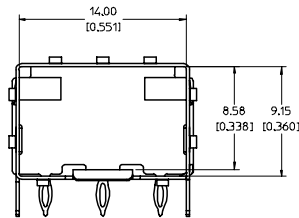
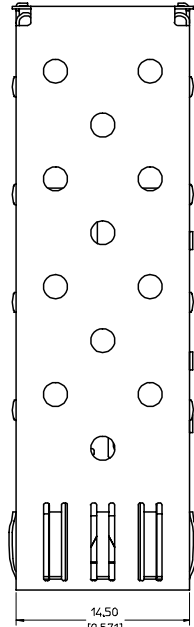
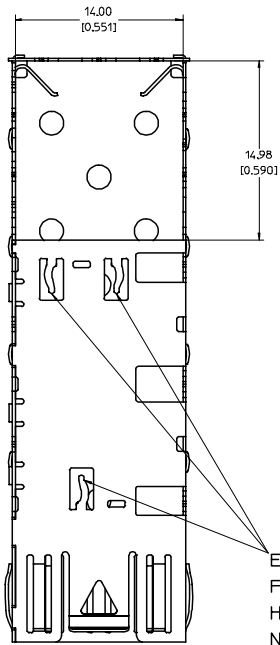


<b>ENTER DESCRIPTION</b> IEC NO.: USY2006-0052 DRAWN BY: KSI MONSO CHYK BRUSSELL APPR: BRUSSELL DATE: 2005/09/13 DATE: 2005/09/14	QUALITY SYMBOLS ▽=0 ▽=0	GENERAL TOLERANCES (UNLESS SPECIFIED) DIMENSION STYLE: MM/INCH SCALE: 8:1 DESIGN UNITS: METRIC THIRD ANGLE PROJECTION	DRAWN BY: KSI MONSO DATE: 2005/09/12 CHECKED BY: BRUSSELL DATE: 2005/09/12 APPROVED BY: BRUSSELL DATE: 2005/09/12	TITLE: SFP ONE PIECE CAGE PRESS-FIT (0.120 LEGS) NO EMI PINS MOLEX INCORPORATED
	DRAFT WHERE APPLICABLE MUST REMAIN WITHIN DIMENSIONS	MATERIAL NO.: 747370005 DOCUMENT NO.: SD-74737-0005	SHEET NO.: 2 OF 3	THIS DRAWING CONTAINS INFORMATION THAT IS PROPRIETARY TO MOLEX INCORPORATED AND SHOULD NOT BE USED WITHOUT WRITTEN PERMISSION



SECTION A-A

<b>ENTER DESCRIPTION</b> IEC NO: USY2006-0052 DRAWN BY: KSI MONSON 2005/09/13 CHECKED BY: CHYD BRUSSELL 2005/09/13 APPROVED BY: APPR: BRUSSELL 2005/09/14	<b>QUALITY SYMBOLS</b> ▽=0 ▽=0	<b>GENERAL TOLERANCES (UNLESS SPECIFIED)</b> <table border="1"> <thead> <tr> <th></th> <th>mm</th> <th>INCH</th> </tr> </thead> <tbody> <tr> <td>4 PLACES</td> <td>±---</td> <td>±---</td> </tr> <tr> <td>3 PLACES</td> <td>±---</td> <td>±.005</td> </tr> <tr> <td>2 PLACES</td> <td>±0.13</td> <td>±.01</td> </tr> <tr> <td>1 PLACE</td> <td>±0.25</td> <td>±---</td> </tr> </tbody> </table>		mm	INCH	4 PLACES	±---	±---	3 PLACES	±---	±.005	2 PLACES	±0.13	±.01	1 PLACE	±0.25	±---	<b>DIMENSION STYLE</b> MM/IN	<b>SCALE</b> 5:1	<b>DESIGN UNITS</b> METRIC	<b>THIRD ANGLE PROJECTION</b>
		mm	INCH																		
	4 PLACES	±---	±---																		
	3 PLACES	±---	±.005																		
2 PLACES	±0.13	±.01																			
1 PLACE	±0.25	±---																			
<b>REVISIONS</b> A	<b>DRAFT WHERE APPLICABLE MUST REMAIN WITHIN DIMENSIONS</b>	<b>DRAWN BY</b> KSI MONSON	<b>DATE</b> 2005/09/12	<b>CHECKED BY</b> BRUSSELL	<b>DATE</b> 2005/09/12	<b>TITLE</b> SFP ONE PIECE CAGE PRESS-FIT (0.120 LEGS) NO EMI PINS															
		<b>APPROVED BY</b> BRUSSELL	<b>DATE</b> 2005/09/12	<b>MOLEX INCORPORATED</b>		<b>SHEET NO.</b> 3 OF 3															
		<b>MATERIAL NO.</b> 747370005	<b>DOCUMENT NO.</b> SD-74737-0005	<b>THIS DRAWING CONTAINS INFORMATION THAT IS PROPRIETARY TO MOLEX INCORPORATED AND SHOULD NOT BE USED WITHOUT WRITTEN PERMISSION</b>																	

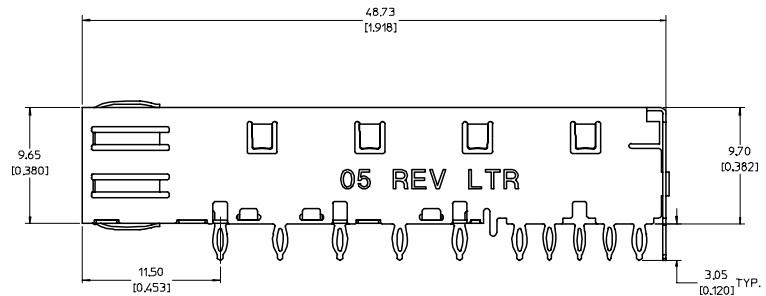
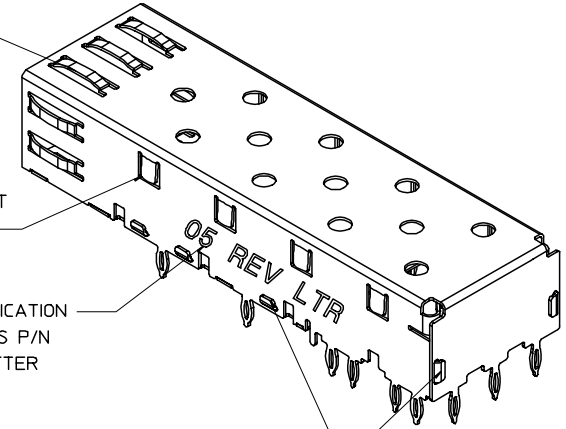


SPRING FINGER GASKET WITH TWO POINTS OF CONTACT. COMPLIES WITH (SFP) MSA BOARD AND BEZEL LOCATIONS.

TABS USED TO MOUNT LIGHT PIPE COVER

CAGE IDENTIFICATION LAST 2 DIGITS P/N AND REV LETTER (ex: 05 X)

ONE PIECE DESIGN SECURELY FASTENED



NOTES:

- PRESS FIT LEGS, 0.120 INCHES LONG. 157 [0.062] MINIMUM PCB THICKNESS.
- THIS CAGE IS FOR SINGLE SIDED USE ONLY.
- CAN BE USED WITH THE FOLLOWING LIGHT PIPE PART NUMBERS:

747260001 - LIGHT PIPE FROM BACK TO TOP  
(REFER TO DOCUMENT SD-74726-001)

747260002 - LIGHT PIPE FROM SIDE TO TOP  
(REFER TO DOCUMENT SD-74726-002)

4. MATERIAL: COPPER ALLOY  
PLATING: PRE-PLATED WITH NICKEL

5. THIS PART MEETS THE RESTRICTION OF HAZARDOUS SUBSTANCES IN ELECTRICAL AND ELECTRONIC EQUIPMENT (ROHS) DIRECTIVE (2002/95/EC).

UPDATED 3D MODELS EC NO: USY2008-0866 DRAWN BY: 2007/10/05 CHECKED: 2007/10/09 APPROVED: 2007/10/23 DESCRIPTION:	QUALITY SYMBOLS	GENERAL TOLERANCES (UNLESS SPECIFIED)	DIMENSION STYLE	SCALE	DESIGN UNITS	THIRD ANGLE PROJECTION	
	$\nabla=0$ $\nabla=0$	mm INCH 4 PLACES ± --- ± --- 3 PLACES ± --- ± .005 2 PLACES ± 0.13 ± .01 1 PLACE ± 0.25 ± --- ANGULAR ± 1 °	MM/IN 5:1	DRAWN BY: KS IMONSO CHECKED BY: RMAHMOOD APPROVED BY: RMAHMOOD	DATE: 2005/09/12 DATE: 2006/12/20 DATE: 2006/12/20	METRIC	TITLE: SFP ONE PIECE CAGE PRESS-FIT (0.120 LEGS) NO EMI PINS MOLEX INCORPORATED
	DRAFT WHERE APPLICABLE MUST REMAIN WITHIN DIMENSIONS	MATERIAL NO. 747370005	DOCUMENT NO. SD-74737-005	SHEET NO. 1 OF 4			
	SIZE D	THIS DRAWING CONTAINS INFORMATION THAT IS PROPRIETARY TO MOLEX INCORPORATED AND SHOULD NOT BE USED WITHOUT WRITTEN PERMISSION					



20 19 18 17 16 15 14 13 12 11 10 9 8 7 6 5 4 3 2 1

M

L

K

J

I

H

G

F

E

D

C

B

A

M

L

K

J

I

H

G

F

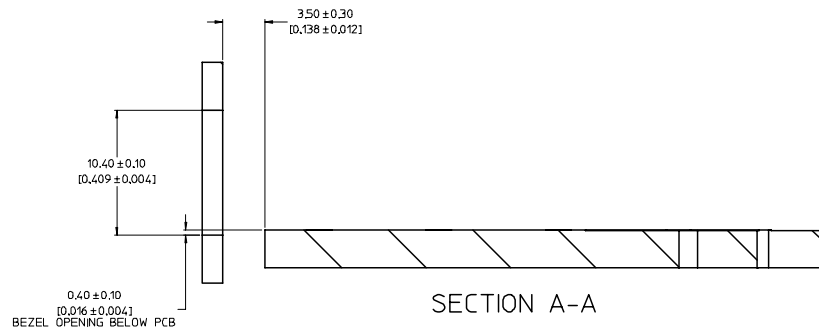
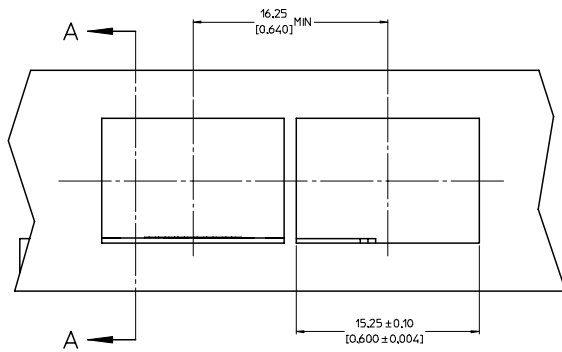
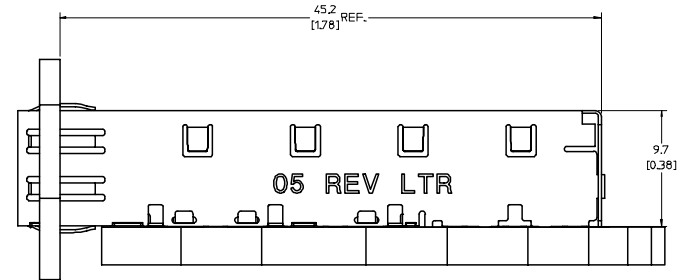
E

D

C

B

A



UPDATED 3D MODELS EC NO: USY2008-0860 DRAWN BY: TORWANKOJ CHECKED: TORWANKOJ APPROVED: TORWANKOJ DATE: 2007/10/09 DATE: 2007/10/09 DATE: 2007/10/23	QUALITY SYMBOLS	GENERAL TOLERANCES (UNLESS SPECIFIED)		DIMENSION STYLE		SCALE	DESIGN UNITS	THIRD ANGLE PROJECTION	
	▽=0 ▽=0	mm	INCH	MM/IN		5:1	METRIC		
		4 PLACES ± --- ± ---	3 PLACES ± --- ± .005	2 PLACES ± 0.13 ± .01	1 PLACE ± 0.25 ± ---	ANGULAR ± 1 °	DRAWN BY: KS IMONSO	DATE: 2005/09/12	TITLE: SFP ONE PIECE CAGE PRESS-FIT (0.120 LEGS) NO EMI PINS
		DRAFT WHERE APPLICABLE MUST REMAIN WITHIN DIMENSIONS		MATERIAL NO: 747370005		APPROVED BY: RMAHMOOD	DATE: 2006/12/20	DOCUMENT NO: SD-74737-005	SHEET NO: 3 OF 4
THIS DRAWING CONTAINS INFORMATION THAT IS PROPRIETARY TO MOLEX INCORPORATED AND SHOULD NOT BE USED WITHOUT WRITTEN PERMISSION									

19 18 17 16 15 14 13 12 11 10 9 8 7 6 5 4 3 2 1

M  
L  
K  
J  
I  
H  
G  
F  
E  
D  
C  
B  
A

M  
L  
K  
J  
I  
H  
G  
F  
E  
D  
C  
B  
A

DATE	REV	CHANGES
2007/01/17	A	INITIAL RELEASE
2007/01/24	B	UPDATED VIEWS
2007/04/25	C	[1] ADDED REV SHEET; [2] UPDATED REV SHEET NOTES A-B; [3] UPDATED DRAWING TO REFLECT CHG'S MADE TO EM-74737-005-ASSY REV C; [4] ROTATED BTM_VIEW 180 DEGREES.

UPDATED 3D MODELS EC NO: USY2008-0866 DRAWN BY: JORWNLCOX 2007/10/05 CHECKED BY: 2007/10/09 APPROVED BY: 2007/10/23	QUALITY SYMBOLS ▽=0 ▽=0	GENERAL TOLERANCES (UNLESS SPECIFIED) <table border="1"> <thead> <tr> <th></th> <th>mm</th> <th>INCH</th> </tr> </thead> <tbody> <tr> <td>4 PLACES ±</td> <td>---</td> <td>---</td> </tr> <tr> <td>3 PLACES ±</td> <td>---</td> <td>±.005</td> </tr> <tr> <td>2 PLACES ±</td> <td>0.13</td> <td>±.01</td> </tr> <tr> <td>1 PLACE ±</td> <td>0.25</td> <td>---</td> </tr> <tr> <td>ANGULAR</td> <td colspan="2">± 1 °</td> </tr> </tbody> </table>		mm	INCH	4 PLACES ±	---	---	3 PLACES ±	---	±.005	2 PLACES ±	0.13	±.01	1 PLACE ±	0.25	---	ANGULAR	± 1 °		DIMENSION STYLE MM/IN	SCALE 1:1	DESIGN UNITS METRIC	THIRD ANGLE PROJECTION
		mm	INCH																					
4 PLACES ±	---	---																						
3 PLACES ±	---	±.005																						
2 PLACES ±	0.13	±.01																						
1 PLACE ±	0.25	---																						
ANGULAR	± 1 °																							
DRAWN BY: KS IMONSO 2005/09/12 CHECKED BY: 2006/12/20 APPROVED BY: 2006/12/20	TITLE SFP ONE PIECE CAGE PRESS-FIT (0.120 LEGS) NO EMI PINS		MATERIAL NO. 747370005		DOCUMENT NO. SD-74737-005	SHEET NO. 4 OF 4																		
DRAFT WHERE APPLICABLE MUST REMAIN WITHIN DIMENSIONS							THIS DRAWING CONTAINS INFORMATION THAT IS PROPRIETARY TO MOLEX INCORPORATED AND SHOULD NOT BE USED WITHOUT WRITTEN PERMISSION																	