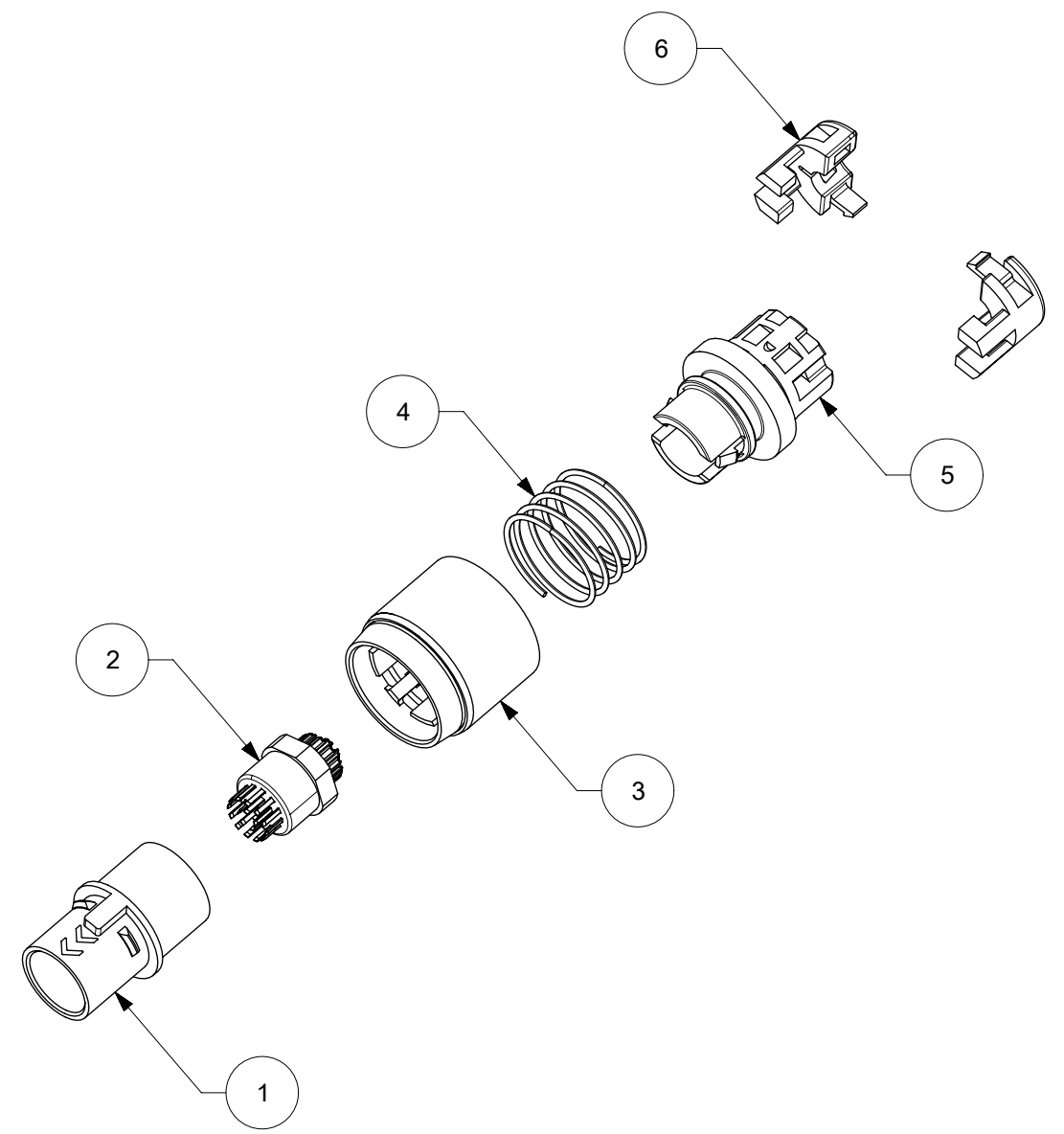
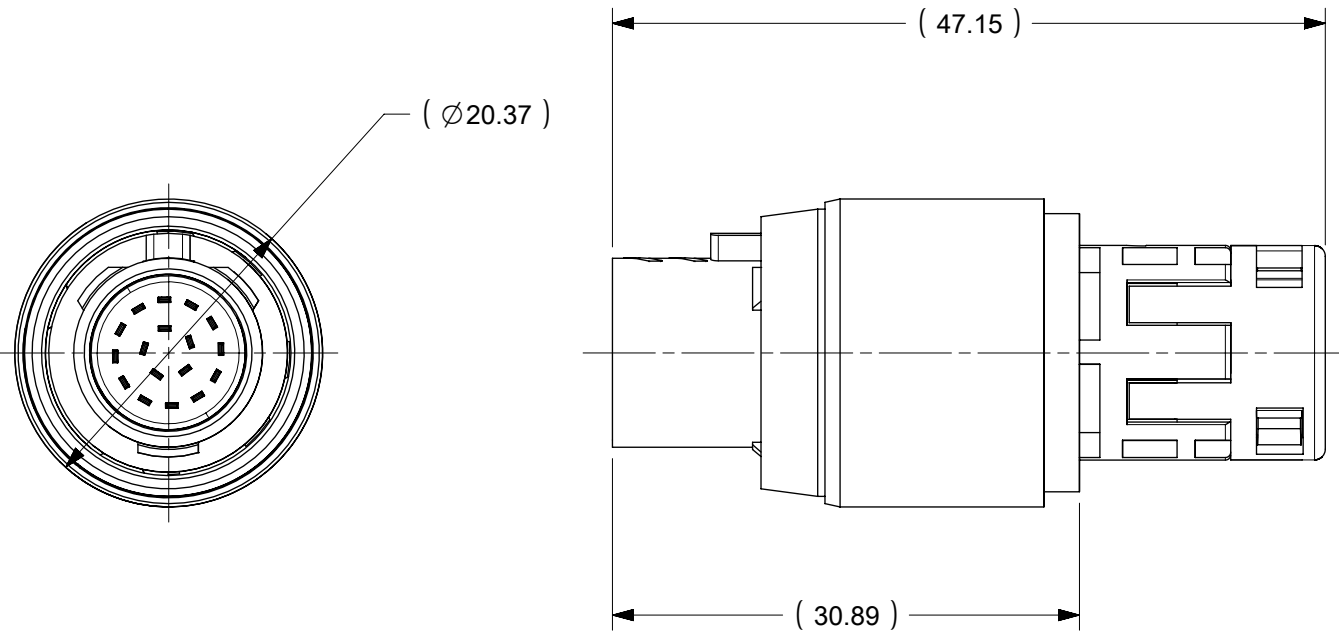


ITEM NUMBER	P/N	DESCRIPTION	QTY	SPQ
1	1723554001	MPC D2 MALE HOUSING	1	10
2	1723542000	MPC D2 MALE 17 CIRCUIT RETAINER ASSEMBLY	1	10
3	1723585000	MPC D2 MALE LOCK SLEEVE ASSEMBLY	1	10
4	1723521000	MPC D2 MALE LOCK SPRING	1	10
5	1723563000	MPC D2 MALE LOCK HOUSING	1	10
6	1723513000	MPC D2 STRAIN RELIEF	2	20



NOTES:

1. KIT TO BE PACKAGED PER SPEC PK-70873-3345
2. MATERIAL, MEDICAL GRADE PPSU; COLOR, BLACK
3. MATES WITH KIT P/N 202110-1710 OR 202111-1710.
4. FOR OVERMOLDING DIMENSIONS AND SPEC SEE APPLICATION SPEC AS-

THIS DRAWING CONTAINS INFORMATION THAT IS PROPRIETARY TO MOLEX ELECTRONIC TECHNOLOGIES, LLC AND SHOULD NOT BE USED WITHOUT WRITTEN PERMISSION									
DIMENSION UNITS	SCALE	CURRENT REV DESC: RETRACTED (AT) AS PER SFC#5003934							
mm	2:1								
GENERAL TOLERANCES (UNLESS SPECIFIED)		EC NO: 741326			MPC D2 MALE ASSEMBLY W/ LOCK 17CKT PRODUCT CUSTOMER DRAWING				
ANGULAR TOL ± °		DRWN: SUGEEB 2023/03/03							
4 PLACES ±		CHKD: GGA 2023/03/09			DOCUMENT NUMBER: 2021121710 DOC TYPE: PSD DOC PART: 000 REVISION: C				
3 PLACES ±		APPR: GGA 2023/03/09							
2 PLACES ±		INITIAL REVISION:			MATERIAL NUMBER: 2021121710 CUSTOMER: GENERAL MARKET SHEET NUMBER: 1 OF 1				
1 PLACE ±		DRWN: JJONIAK 2016/07/11							
0 PLACES ±		APPR: BPISZCZOR 2016/10/21			SERIES: B-SIZE 202112 THIRD ANGLE PROJECTION				
DRAFT WHERE APPLICABLE MUST REMAIN WITHIN DIMENSIONS		DRAWING							

DOCUMENT STATUS	P1	RELEASE DATE	2023/03/09	05:35:05
-----------------	----	--------------	------------	----------