

SPICE-Equivalent circuit model library

Table 1. Equivalent circuit data

Part Number	L (μ H)	F _{res} (MHz)	C1 (pF)	R1 (Ω)	R2 Nominal DCR of winding (Ω)
HCM1A0703-R10-R	0.1	193.8	6.74	8370.32	0.0012
HCM1A0703-R15-R	0.15	155.3	7.01	8389.01	0.0015
HCM1A0703-R22-R	0.22	125.9	7.26	8406.70	0.0023
HCM1A0703-R33-R	0.33	100.9	7.54	8425.47	0.0035
HCM1A0703-R47-R	0.47	83.1	7.80	8441.87	0.0037
HCM1A0703-R56-R	0.56	75.5	7.93	8450.01	0.0047
HCM1A0703-R68-R	0.68	67.9	8.08	8459.04	0.005
HCM1A0703-R82-R	0.82	61.3	8.22	8467.75	0.0067
HCM1A0703-1R0-R	1	55.0	8.37	8477.00	0.009
HCM1A0703-1R2-R	1.2	49.8	8.52	8485.50	0.0093
HCM1A0703-1R5-R	1.5	44.1	8.70	8495.93	0.014
HCM1A0703-2R2-R	2.2	35.7	9.02	8513.84	0.018
HCM1A0703-3R3-R	3.3	28.6	9.37	8532.85	0.028
HCM1A0703-4R7-R	4.7	23.6	9.68	8549.46	0.037
HCM1A0703-6R8-R	6.8	19.3	10.03	8566.85	0.054
HCM1A0703-8R2-R	8.2	17.4	10.21	8575.67	0.064
HCM1A0703-100-R	10	15.6	10.40	8585.04	0.0705
HCM1A0703-150-R	15	12.5	10.80	8604.20	0.118
HCM1A0703-220-R	22	10.1	11.20	8622.35	0.135
HCM1A0703-330-R	33	8.1	11.63	8641.60	0.22

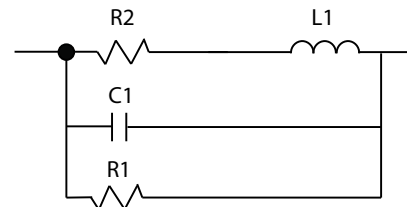


Figure 1. Equivalent circuit

Disclaimer

The data provided is for reference and is intended for evaluation purposes only. Users should verify all intended results in the end application.

Eaton
Electronics Division
 1000 Eaton Boulevard
 Cleveland, OH 44122
 United States
www.eaton.com/electronics

© 2018 Eaton
 All Rights Reserved
 Printed in USA
 Publication No. HCM1A0703 Spice
 April 2018