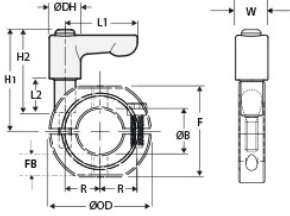




LV-OF-MSP-40-SS

Ruland LV-OF-MSP-40-SS, 40mm Mountable Two-Piece Shaft Collar with Clamping Lever, 303 SS Collar with Zinc Plated Lever, 60mm OD, 15mm Width



Description

Ruland LV-OF-MSP-40-SS is a two-piece mountable quick clamping shaft collar with clamping lever with a 40mm bore, 60mm OD, and 15mm width. It is made from OF-MSP-40-SS and LF45-CL-M6:20-ZS. LV-OF-MSP-40-SS has OD flats and tapped holes for mounting shaft collars to each other or adjacent components. The clamp style design does not mar the shaft, is easy to remove, and is indefinitely adjustable. The threaded stud on the lever is used in place of standard collar hardware. Two-piece shaft collars can be assembled in-lace without the need to remove other components. Ruland mates halves throughout the manufacturing process for proper fit, alignment, and holding power. When combined, the two parts create a shaft collar that requires no tools to install, remove, or reposition and is ideally suited for packaging, printing, and other applications where frequent setup changes and adjustments are needed. Once the lever is installed in the shaft collar, users simply turn the lever until they meet their desired torque. The adjustable lever can be reposition by the user without the loss of holding power by lifting the handle and twisting it 40° to lock it in a new position. This allows for use in space constrained environments where 360° rotation is not possible to fully seat the lever. OF-MSP-40-SS is made from 303 stainless steel. LF45-CL-M6:20-ZS has a zinc plated steel handle and stainless steel threaded stud. This material combination allows for a durable quick clamping and release component with high corrosion resistance that is suitable for most industrial applications. The lever is black to seamlessly integrate with the aesthetics of most equipment. OF-MSP-40-SS is manufactured by Ruland and LF45-CL-M6:20-ZS is manufactured by Otto Ganter. LV-OF-MSP-40-SS is RoHS3 and REACH compliant.

Product Specifications

Bore (B)	40 mm	Bore Tolerance	+0.050 mm / +0.012 mm
Outer Diameter (OD)	60 mm	Center to Lever Top H1	40.8 mm
Width (W)	15 mm	Width Tolerance	+0.076 mm / -0.254 mm
Lever Length L1	45 mm	Lever Height H2	40.5 mm
Hub Diameter DH	13 mm	Sleeve Length L2	20 mm
Threaded Mounting Hole	M6	Distance Across Flats (F)	55 mm
Flat to Bore FB	7.5 mm	Recommended Gap	1.59 mm
Recommended Shaft Tolerance	+0.000 mm / -0.013 mm	Thread TH	M6
Hex Wrench Size	5.0 mm	Seating Torque	9.6 Nm
Screw Location (R)	24.99 mm	Number of Screws	2 ea
Collar Part Number	OF-MSP-40-SS	Lever Part Number	LF45-CL-M6:20-ZS
Collar Material	303 Stainless Steel	Collar Finish	Bright
Handle Color	Black	Handle Material	Zinc
Handle Finish	Powder Coated	Insert and Screw Material	303 Stainless Steel
Manufacturer	Ruland Manufacturing	Country of Origin	Shaft Collar - USA Lever - Germany
Weight (lbs)	0.444400	UPC	634529303726
Tariff Code	8483.60.8000	UNSPC	31162811
Note 1	Performance ratings are for guidance only. The user must determine suitability for a particular application.		
Prop 65	⚠️ WARNING This product can expose you to the chemical Soots, Benzene, Lead, Nickel (metallic), known to the State of California to cause cancer		