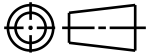


CATIA V5



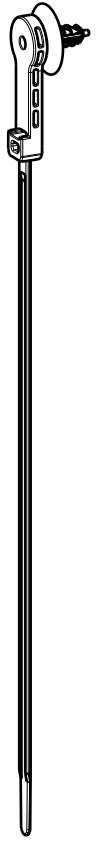
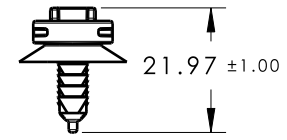
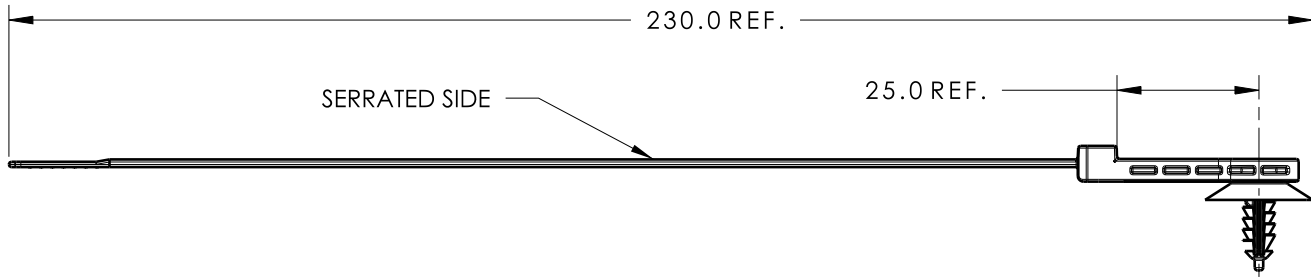
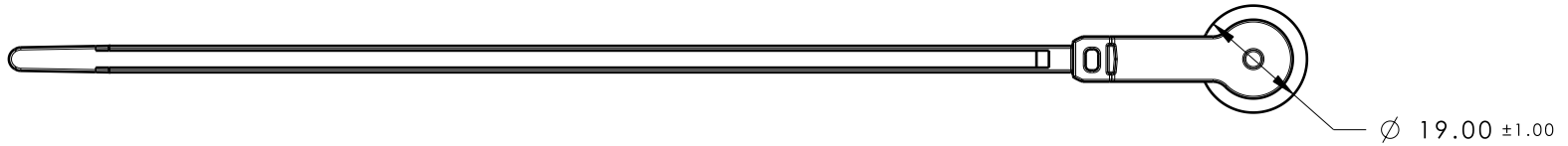
Revision Level		Revision Record	Changed	Date	Approved	Date
Drawing	Part					
02.00	A	SEE ECN# 012356	CJR	5/7/13	KVH	5/7/13

REFERENCE:

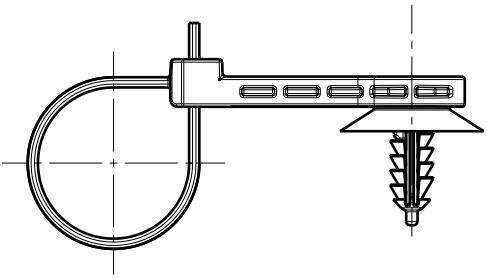
PERFORMANCE REQUIREMENTS:

1. FIR TREE PUSH IN FORCE: 10 lbs MAX IN A M6 THREADED HOLE
2. FIR TREE PULL OUT FORCE: 25 lbs MIN IN A M6 THREADED HOLE
3. HOLE DIAMETER: M6 THREADED HOLE
4. PANEL THICKNESS RANGE: 0.6 TO 5.5mm
5. CABLE TIE TENSILE STRENGTH: 50 lbs MIN
6. BUNDLE RANGE: 1.6mm TO 50mm

02



ISOMETRIC VIEW
SCALE 1:2



ASSEMBLY VIEW
SCALE 1:1

Material PA66HIRHS COLOR: BLACK	Units millimeters Tolerance defined on each dimension	The copyright of this drawing is reserved by HellermannTyton. It is issued on condition that it is not reproduced, copied or disclosed to a third party, either wholly or in part, without the consent of HellermannTyton.	Drawn	MHT	11/21/12	Article/Type-No	T50ROSFTM6SO25B	Scale	3:4	
			Approved	KVH	11/21/12	Title	T50ROS WITH 25mm OFFSET AND M6 FIR TREE (B-SERIES)	Project Number	12-0672	
			HellermannTyton North America Email: corp@htamericas.com Web: www.hellermann.tyton.com			Drawing-No	12-0672-001-CSU	PRODUCTION : Phase	Format	AH
						Sheet	1/1			

Product Number
Cross Reference Record

Uncontrolled Document

Type Number	UNS Universal Number System	Customer Drawing Title	Color
T50ROSFTM6SO25B	157-00172		BLK

Issued By:

Reference Drawing Number:

Issue Date:

12-0672-001-CSU

August 31, 2015