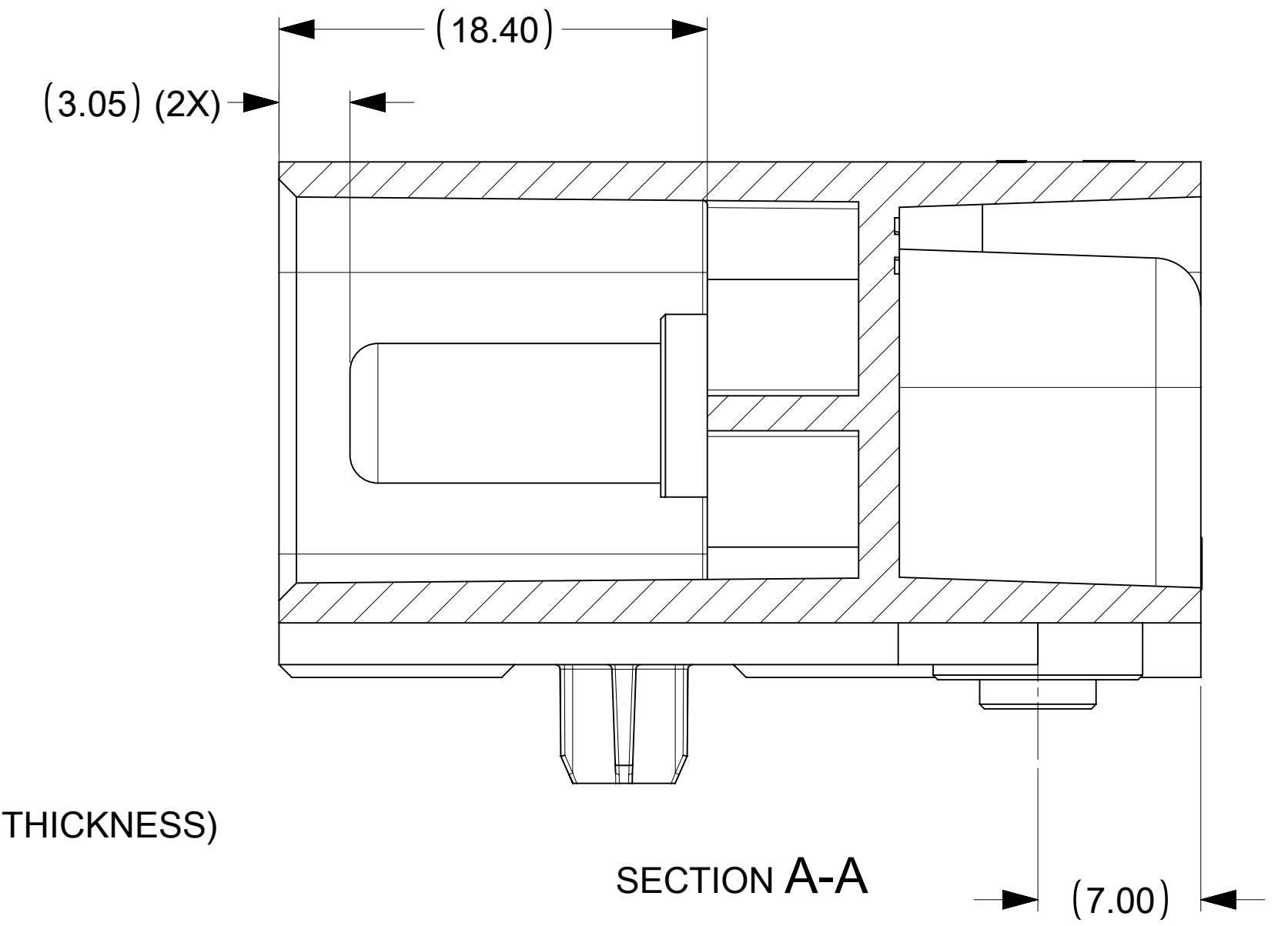
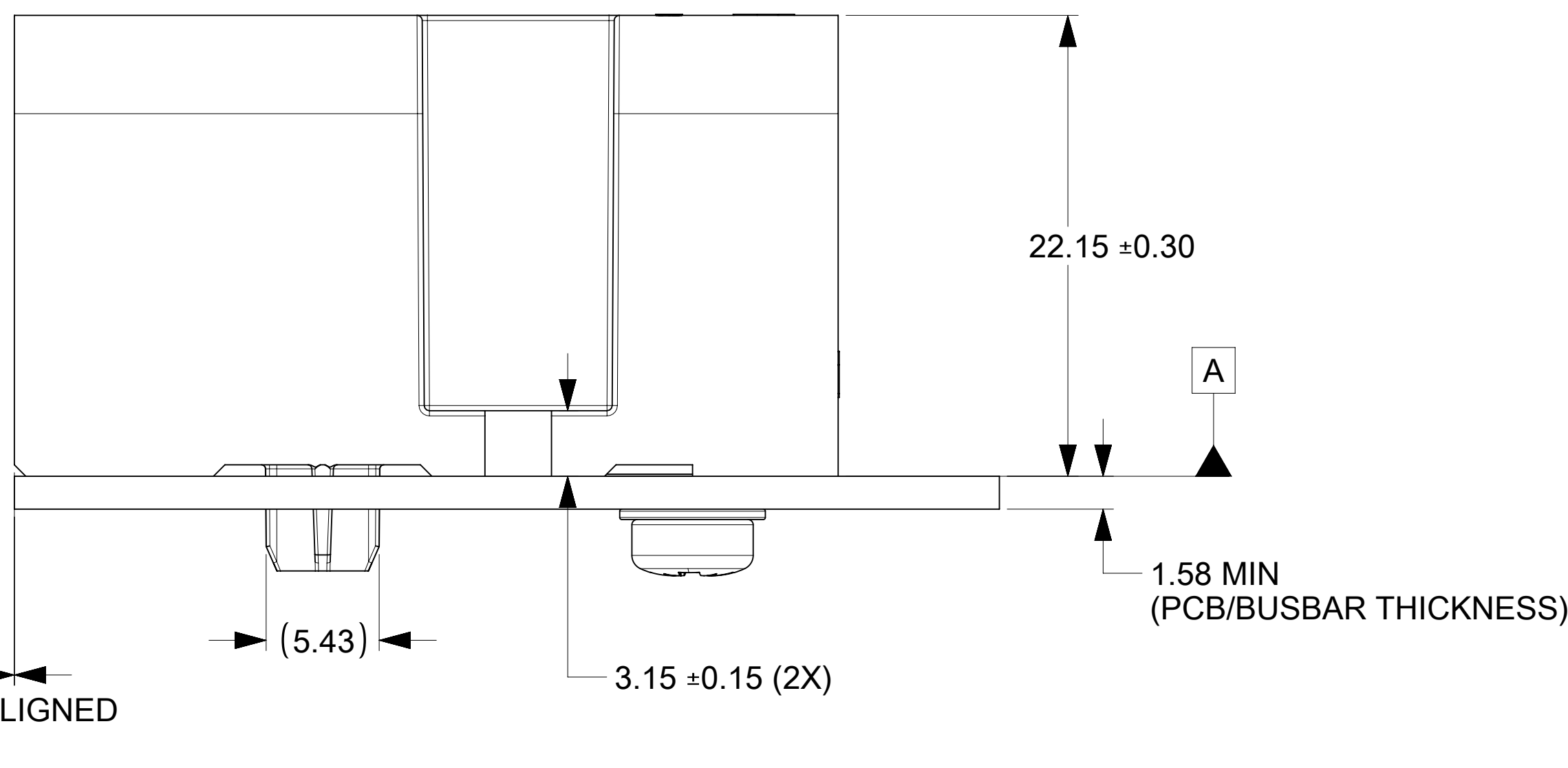
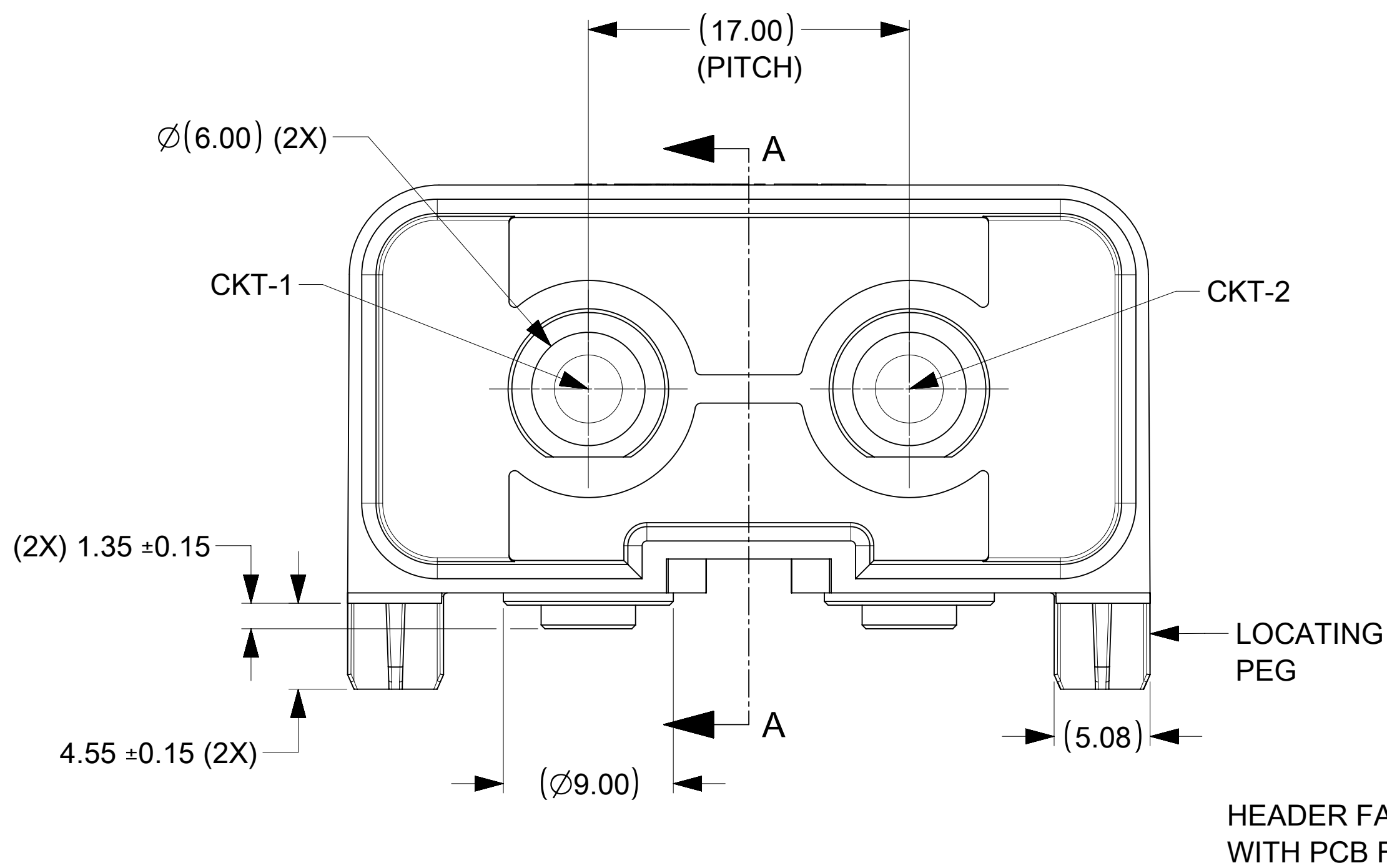


CAVITIES FOR SCREW MOUNT  
(IT PROVIDES HIGHER RETENTION  
BETWEEN HEADER AND PCB)



- NOTES:**
- MATERIAL:  
-HOUSINGS: LCP UL94 V-0, COLOR: BLACK  
-TERMINALS: COPPER ALLOY
  - PLATING: 3.18 MICRON MIN SILVER OVER 1.27 MICRON MIN NICKEL.
  - HEADER TERMINALS ARE FINISHED WITH ANTI-TARNISH TREATMENT BUT MAY TARNISH OVER TIME.
  - ASSEMBLY MEETS ROHS REQUIREMENT.
  - PRODUCT SPECIFICATION: 2155100006-PS
  - TEST SUMMARY: 2155106000-TS
  - APPLICATION SPECIFICATION: 2155101000-AS
  - PACKAGING SPECIFICATION: 2155106121-PK
  - MATES WITH HARNESS ASSEMBLY 215511-6121.
  - HEADER IS MOUNTED TO PCB WITH FASTENERS (M3 SCREW AND NUT) FOR HIGHER RETENTION FORCE.
  - MALE PIN TO BE MOUNTED TO PCB/BUSBAR WITH CONDUCTIVE M3 SCREW AND WASHER FOR OPTIMAL PERFORMANCE.
  - SCREW LENGTH TO BE DECIDED BY THE CUSTOMER BASED ON THE PCB THICKNESS AND THE SPACE AVAILABLE BELOW PCB (REFER 2155101000-AS FOR SCREW RECOMMENDATIONS)
  - SCREWS AND WASHERS ARE NOT SUPPLIED BY MOLEX.

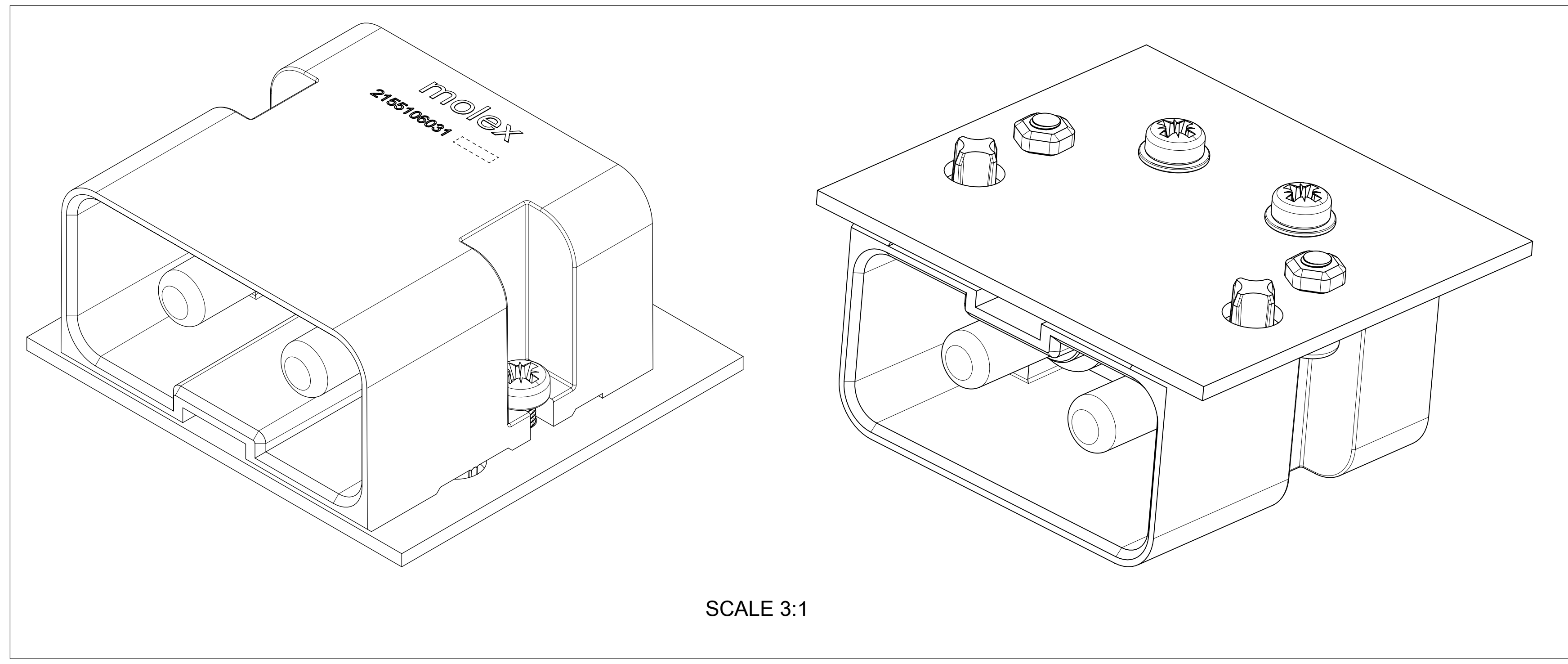
THIS DRAWING CONTAINS INFORMATION THAT IS PROPRIETARY TO MOLEX ELECTRONIC TECHNOLOGIES, LLC AND SHOULD NOT BE USED WITHOUT WRITTEN PERMISSION									
DIMENSION UNITS		SCALE		CURRENT REV DESC: INITIAL RELEASE					
mm		4:1							
GENERAL TOLERANCES (UNLESS SPECIFIED)				EC NO: 680381					
ANGULAR TOL ± 0.5°				DRWN: CHETAB		2021/04/16			
4 PLACES ±				CHK'D: MBELLE		2021/10/08			
3 PLACES ±				APPR: HTHYAGARAJ		2021/10/19			
2 PLACES ± 0.15				INITIAL REVISION:					
1 PLACE ± 0.25				DRWN: CHETAB		2021/04/16			
0 PLACES ±				APPR: HTHYAGARAJ		2021/10/19			
DRAFT WHERE APPLICABLE MUST REMAIN WITHIN DIMENSIONS				THIRD ANGLE PROJECTION		DRAWING SERIES		MATERIAL NUMBER	
		D-SIZE		215510		2155106031		CUSTOMER	
						GENERAL MARKET		SHEET NUMBER	
								1 OF 2	

**molex**

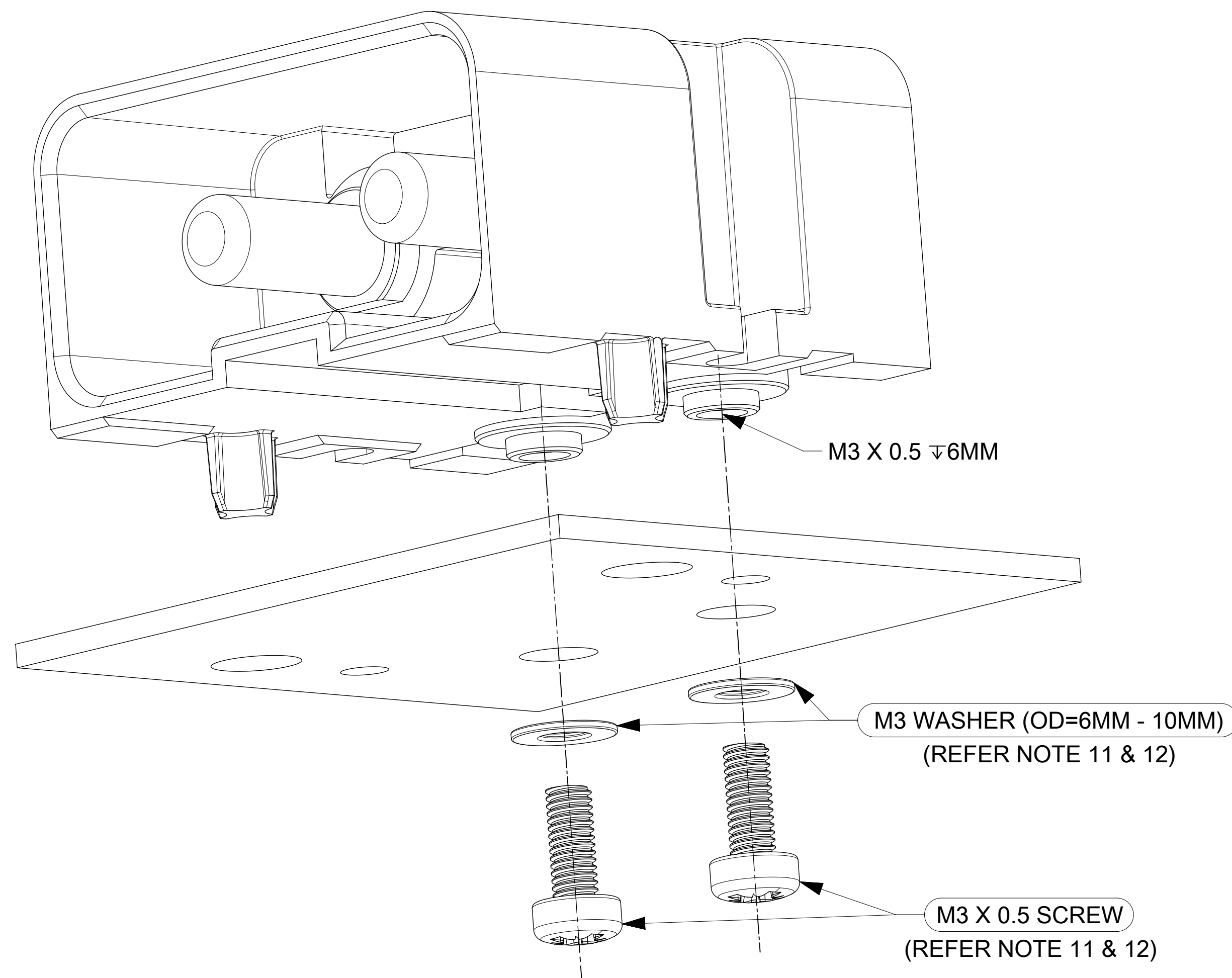
2-CKT 6MM RA HEADER\_SCREW MOUNT VERSION  
POWERWIZE PRODUCT FAMILY

PRODUCT CUSTOMER DRAWING

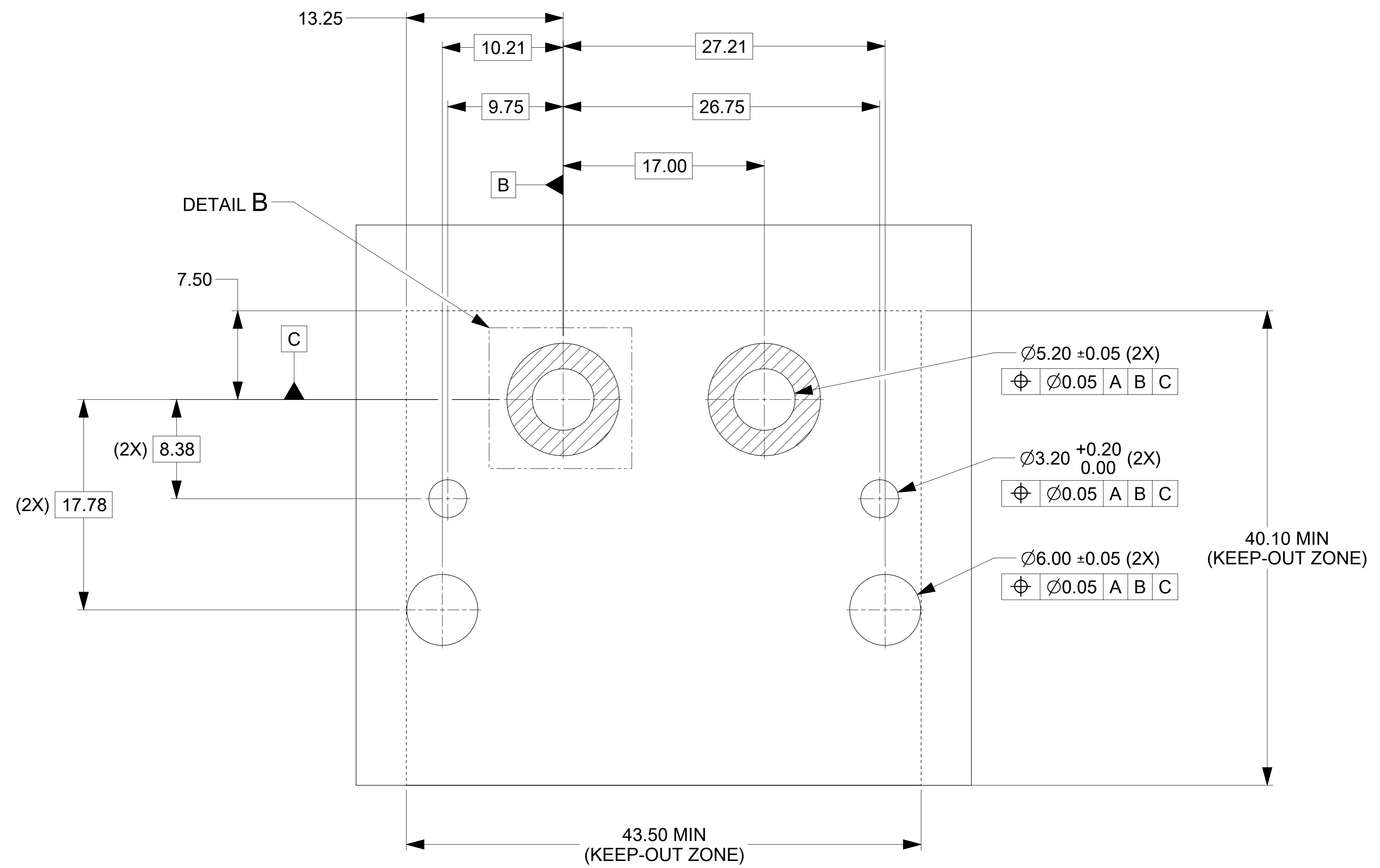
DOCUMENT NUMBER	DOC TYPE	DOC PART	REVISION
2155106031	PSD	000	A



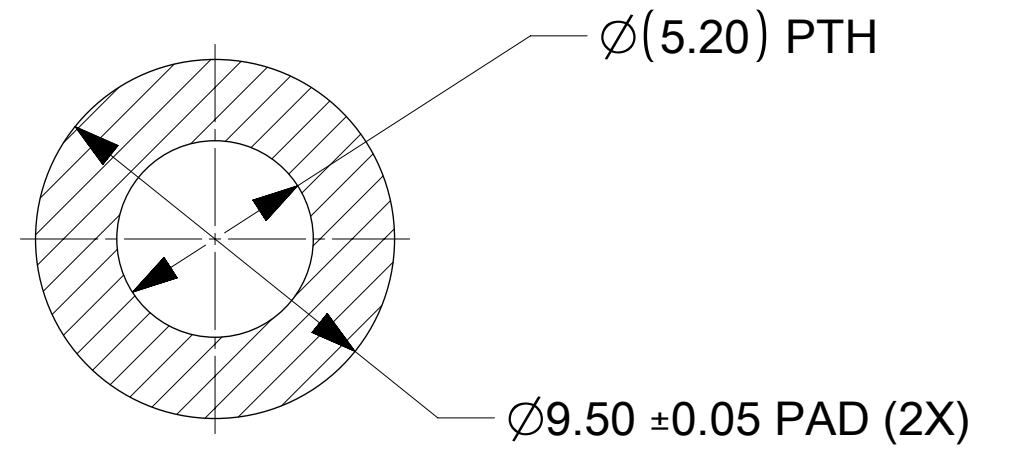
SCALE 3:1



EXPLODED VIEW FOR SCREW MOUNT TERMINATION (REFER NOTE 10)



RECOMMENDED PCB LAYOUT AND KEEP-OUT ZONES



DETAIL B  
SCALE 5:1

THIS DRAWING CONTAINS INFORMATION THAT IS PROPRIETARY TO MOLEX ELECTRONIC TECHNOLOGIES, LLC AND SHOULD NOT BE USED WITHOUT WRITTEN PERMISSION											
DIMENSION UNITS	SCALE	CURRENT REV DESC: INITIAL RELEASE									
mm	4:1	<div style="text-align: right; font-size: 24pt; font-weight: bold;">molex</div> 2-CKT 6MM RA HEADER_SCREW MOUNT VERSION POWERWIZE PRODUCT FAMILY									
GENERAL TOLERANCES (UNLESS SPECIFIED)											
ANGULAR TOL	± 0.5°	PRODUCT CUSTOMER DRAWING									
4 PLACES	±	EC NO: 680381	DOCUMENT NUMBER								
3 PLACES	±	DRWN: CHETAB	2021/04/16	DOC TYPE					DOC PART	REVISION	
2 PLACES	± 0.15	CHK'D: MBELLE	2021/10/08	2155106031					PSD	000	A
1 PLACE	± 0.25	APPR: HTHYAGARAJ	2021/10/19	GENERAL MARKET					SHEET NUMBER		
0 PLACES	±	INITIAL REVISION:	2021/04/16		2 OF 2						
DRAFT WHERE APPLICABLE MUST REMAIN WITHIN DIMENSIONS		DRWN: CHETAB	2021/04/16	MATERIAL NUMBER		CUSTOMER		SHEET NUMBER			
		APPR: HTHYAGARAJ	2021/10/19	2155106031		GENERAL MARKET		2 OF 2			
		THIRD ANGLE PROJECTION	DRAWING	SERIES	215510						