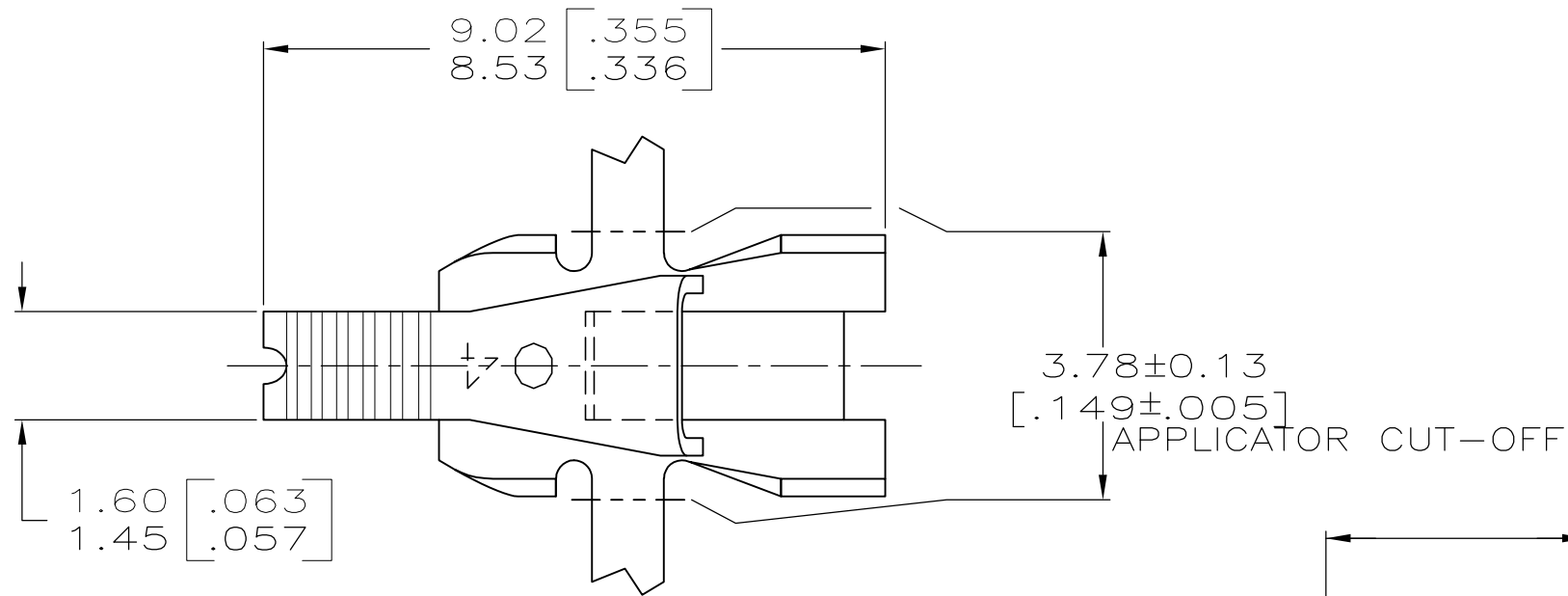
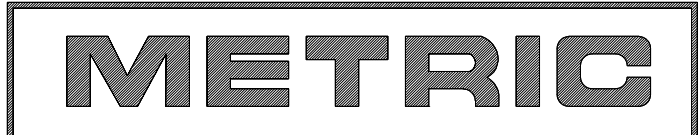
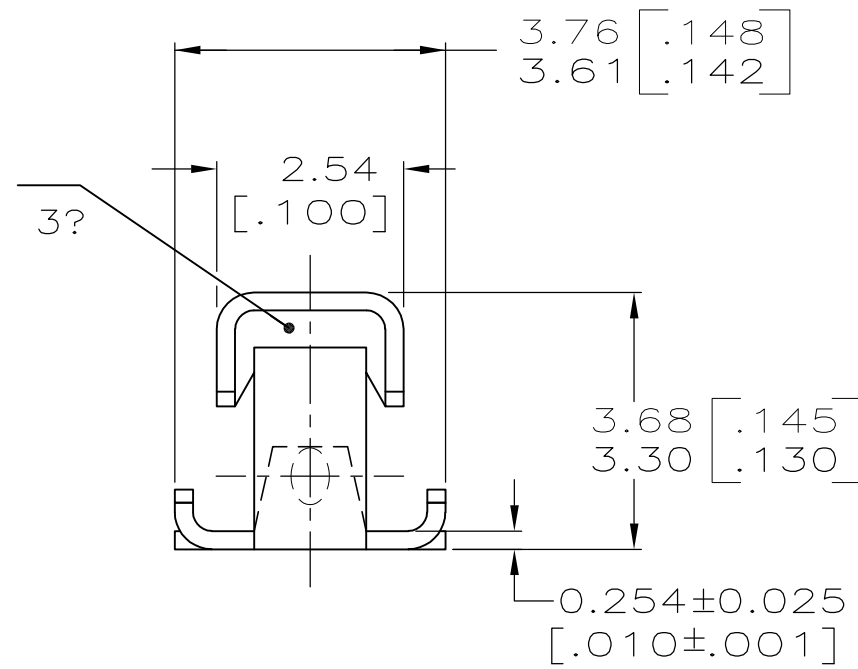
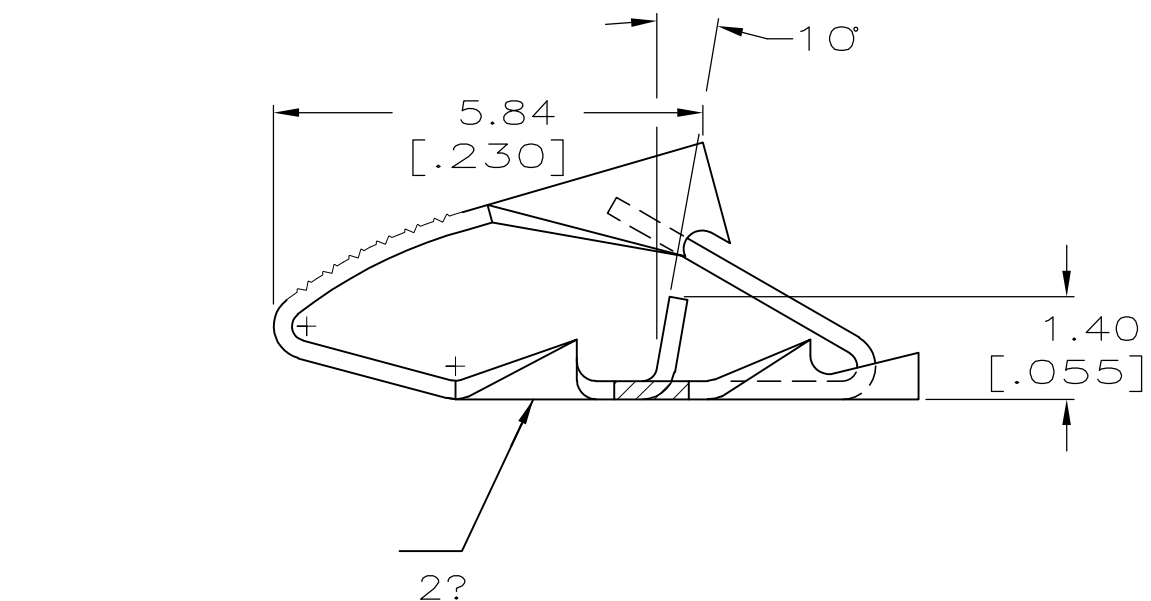


THIS DRAWING IS UNPUBLISHED. RELEASED FOR PUBLICATION, 19  
 © COPYRIGHT 19 BY AMP INCORPORATED. ALL INTERNATIONAL RIGHTS RESERVED.

LOC	DIST	P	F	ZONE	LTR	REVISIONS	DATE	APPD
AF	50				D	DESCRIPTION		
						ECR-13-008483	06AUG13	JX/DZ



- 1 CONTINUOUS STRIP ON REELS WITH TERMINALS LOCATED ON 6.10 [.240] CENTERS.
- 2? IDENTIFICATION NUMBER (04) FOR MAGNET WIRE RANGE.
- 3? TERMINAL ACCEPTS A 1.27 X 0.51 [.050 X .020] POST.



0.02-0.06mm [#52-#42] AWG		63613-1	
COPPER MAGNET WIRE RANGE		PART NUMBER	
DO NOT SCALE PRINT. UNLESS SPECIFIED DIMENSIONS IN mm [INCHES] TOLERANCES ON: 2 PLC DEC ± 0.25 [.010] 3 PLC DEC ± - ANGLES ± -		<b>AMP</b> AMP INCORPORATED Harrisburg, Pa. 17105	
MATERIAL H02 HARD BRASS		NAME TERMINAL, POKE-IN, MINI MAG-MATE™	
FINISH TIN PLATE		SIZE <b>B</b>	CAGE CODE 00779
DR 9/10/91 MICHAEL S. FEHER CHK 9/10/91 JEFF R. RUTH APPD 9/11/91 NELSON E. NEFF APPD 9/16/91 TERRY L. SHUTTER PRODUCT SPEC - APPLICATION SPEC 114-2047 WEIGHT -		DRAWING NO 63613	SHEET 1 OF 1
		SCALE 10:1	