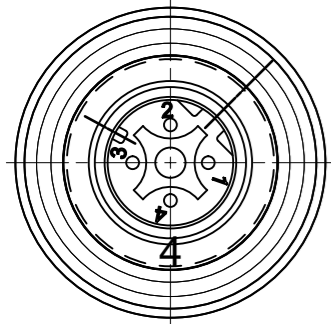


M12U 4 POLE MALE



VIEW FROM THE FRONT SIDE

PIN	WIRE COLOR
1	OG
2	GN
3	OG-WH
4	GN-WH

PART No. MATRIX

**E W W A 0 6 3 0 4 M X X X**

E=ETHERNET

HEADS:  
W=M12 4-Pole Ultra Lock D-Coding  
W=M12 4-Pole Ultra Lock D-Coding

HEADS STYLE:  
063=MALE RA / MALE RA

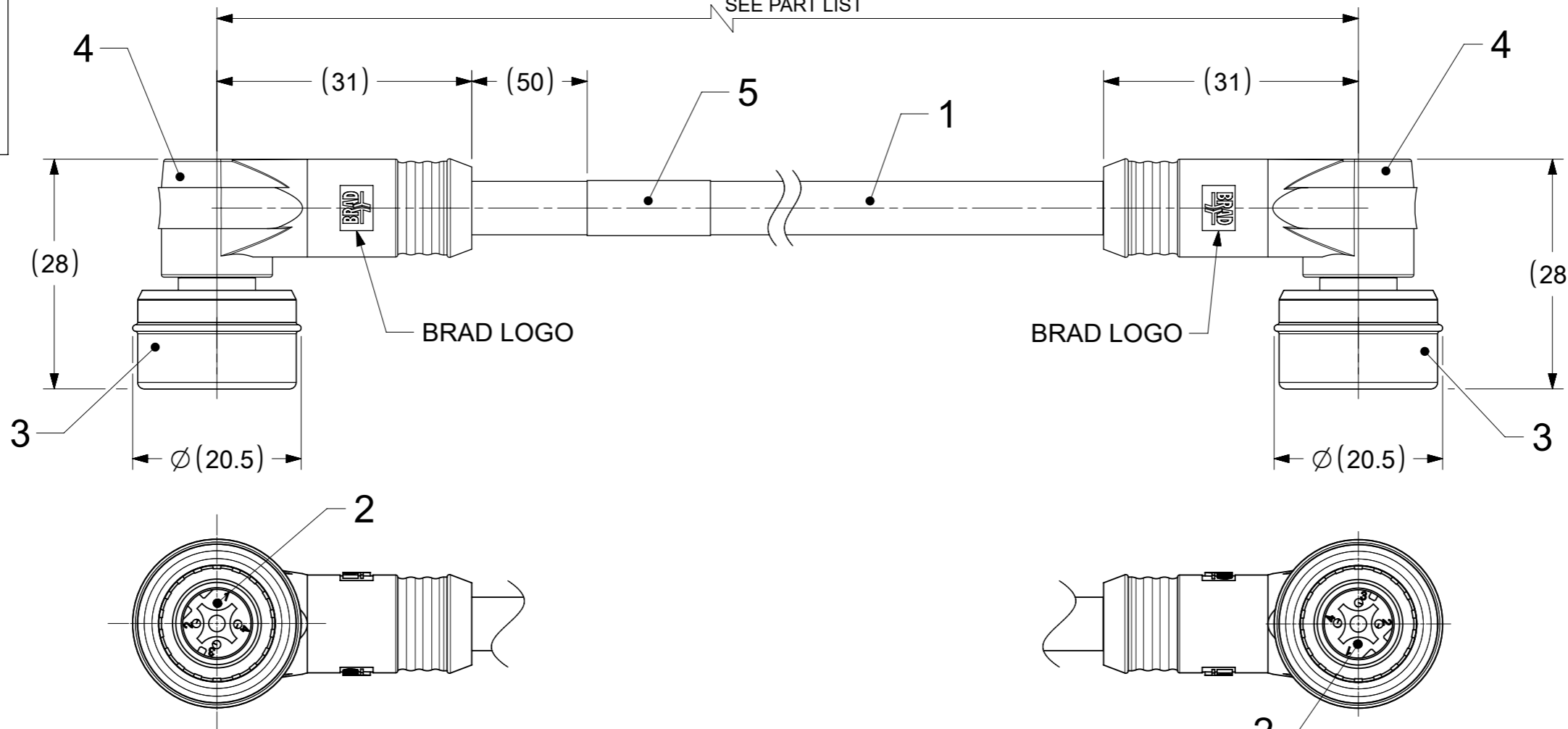
UNITS:  
M = METER  
T=10x METER

LENGTH EXAMPLES:  
005=0.5  
010=1  
150=15

WIRING TYPE:  
A=4 Pole STRAIGHT WIRED

CABLE TYPE

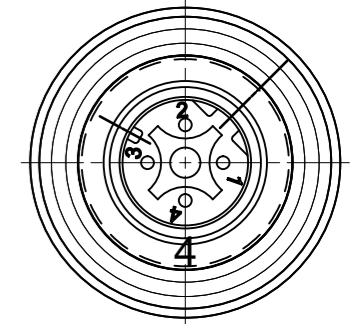
L + Tol.[mm]  
SEE PART LIST



VIEW FROM THE FRONT SIDE

VIEW FROM THE FRONT SIDE

M12U 4 POLE MALE



VIEW FROM THE FRONT SIDE

PIN	WIRE COLOR
1	OG
2	GN
3	OG-WH
4	GN-WH

PART LIST

MOLEX PN	ENGINEERING No	L+Tol. [mm]
1201085020	EWWA06304M010	1000 +56

BOM

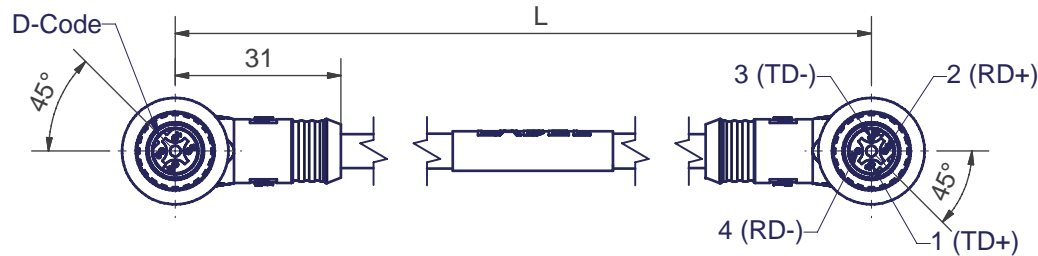
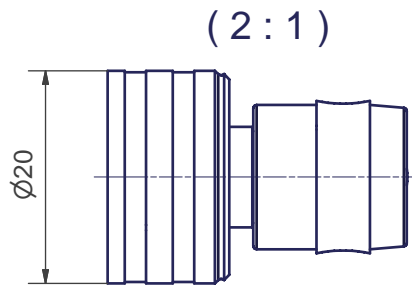
ITEM	QTY.	DESCRIPTION	MATERIAL	FINISH/COLOR
5	1	LABEL	VINYL	YELLOW
4	-	OVERMOULD	TPC	BLACK
3	2	ULTRALOCK ASSEMBLY MALE	-	-
2	8	CONTACT MALE	BRASS	Au OVER Ni
1	-	CABLE TPE ETHERNET CAT5E	TPE	TEAL

DOCUMENT STATUS	P1	RELEASE DATE	2022/04/22	06:35:59
-----------------	----	--------------	------------	----------

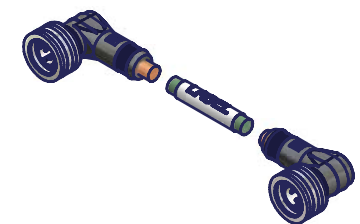
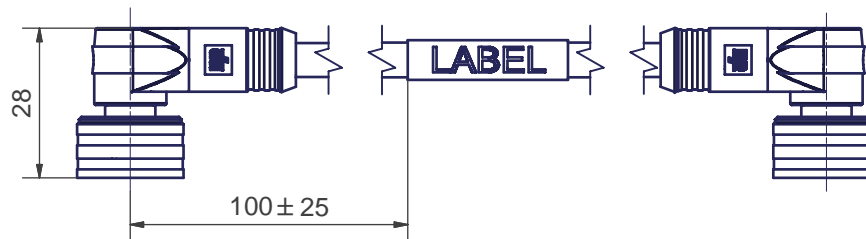
NOTES :

ACC. TO CAT5e ETHERNET STD.  
MAX. VOLTAGE : 30V  
MAX. CURRENT : 1.5A  
IP RATING : IP67  
TEMPERATURE RANGE : -20°C TO +75°C

FUNCTIONAL SYMBOLS	THIS DRAWING CONTAINS INFORMATION THAT IS PROPRIETARY TO MOLEX ELECTRONIC TECHNOLOGIES, LLC AND SHOULD NOT BE USED WITHOUT WRITTEN PERMISSION	SCALE	CURRENT REV DESC.
$\nabla_A = 0$	mm	3:2	<p><b>molex</b></p> <p>M12U D-CODE CORD.M.M.90? UNSHILD.TPU 1M</p> <p>PRODUCT CUSTOMER DRAWING</p> <p>EC NO: 703538 DRWN: SSM CHK'D: RSILLER APPR: RSILLER INITIAL REVISION: DRWN: SSM APPR: RSILLER</p>
$\nabla_E = 0$	GENERAL TOLERANCES (UNLESS SPECIFIED)		
$\nabla_V = 0$	ANGULAR TOL ± 1.0°		
	4 PLACES ±	2022/03/29	
DIVISIONAL SYMBOLS	3 PLACES ±	2022/04/22	2022/03/29
	2 PLACES ± 0.05	2022/04/22	2022/03/29
	1 PLACE ± 0.3		2022/04/22
	0 PLACES ± 0.5		
DRAFT WHERE APPLICABLE MUST REMAIN WITHIN DIMENSIONS	THIRD ANGLE PROJECTION	DRAWING	SERIES
		A3-SIZE	120108
		MATERIAL NUMBER	CUSTOMER
		SEE PART LIST	GENERAL MARKET
		DOCUMENT NUMBER	DOC TYPE DOC PART REVISION
		1201085020	PSD 000 A
			SHEET NUMBER
			1 OF 1



SAP Number	WDHD Number	length L
1201085006	EWWA06304M020	2000
1201085007	EWWA06304M030	3000
1201085008	EWWA06304M080	8000
1201085009	EWWA06304M100	10000
1201085010	EWWA06304M150	15000
1201085011	EWWA06304M200	20000
1201085012	EWWA06304M230	23000
1201085013	EWWA06304M300	30000
1201085014	EWWA06304M380	38000
1201085015	EWWA06304M450	45000
1201085016	EWWA06304M530	53000
1201085017	EWWA06304M600	60000
1201085018	EWWA06304M760	76000
1201085019	EWWA06304M900	90000
1201085020	EWWA06304M010	1000



For further cable length  
see generic drawing

Electrical Data:  
Ultra-Lock Cordset  
According to CAT5e Ethernet Standard.  
Cordset 90° male D - code to male 90° D - code  
Poles: 4  
Max. Voltage: 125V  
Max Current: 1,5A  
Contact resistance: <5m Ohm  
Insulation withstand: >100M Ohm  
Protection: IP67  
Temperature range: -25°C to 75°C



Connection: Inline

Cable Material: TPE  
Kabel Material: TPE

Packaging:  
The coil is packed into a plastic bag and welded.  
Verpackung:  
Das Kabel wird zusammengerollt in eine Plastiktüte gegeben und verschweißt.

WDHD: EWWA06304MXXX

This drawing and its contents are the proprietary and confidential property of Woodhead Industries Inc. and/or its subsidiaries and may not be used or disclosed to others without the express prior written consent of Woodhead Industries Inc. and/or its subsidiaries.				Scale 1:1	Dimensions mm
		UNLESS OTHERWISE SPECIFIED x = ±1 X.X = ±0,1 X.XX = ±0,05 Winkel = 1°		Material Finish	
PROJECTION 1 : GER		Date	Name	Ultra-Lock D-code cord.m.m.90° unsh. SPR 040012	
		01.09.2008	NS		
		01.09.2008	US		
		09.09.2008	US	SD-120108-002	
Woodhead Connectivity GmbH					
Gewerbestraße 60 75015 Bretten-Gölshausen Tel.: 07252/9496-0 Fax: 07252/9496-199					
02	WEU2009-0080	09.09.08	NS	Sheet 1	
01	WEU2009-0069	01.09.08	NS	A3	
Rev.	Change	Date	Name	Filename SD-120108-002.idw	