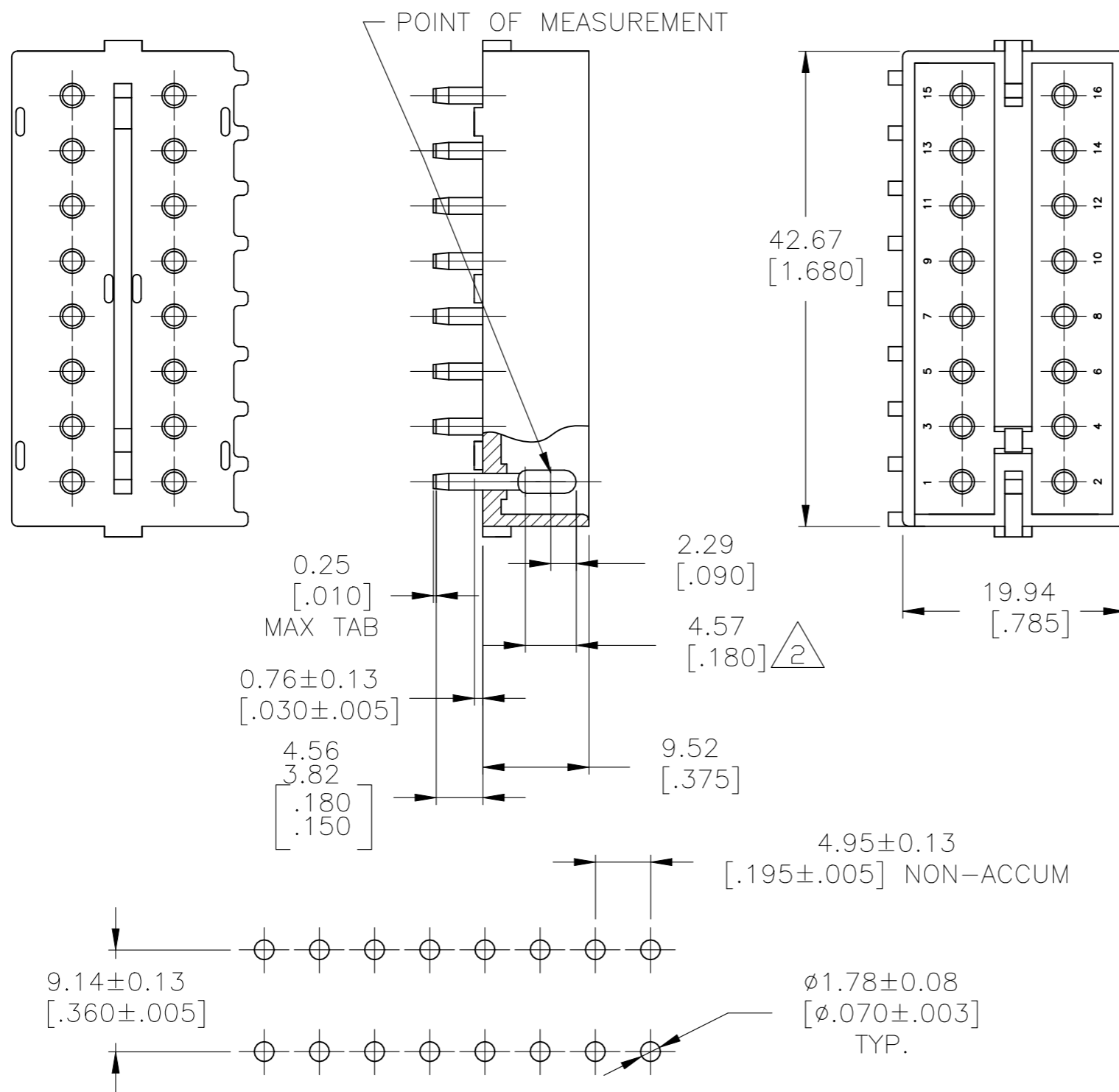


THIS DRAWING IS UNPUBLISHED. RELEASED FOR PUBLICATION
 © COPYRIGHT BY TYCO ELECTRONICS CORPORATION. ALL RIGHTS RESERVED.

LOC CM DIST 0

REVISIONS					
P	LTR	DESCRIPTION	DATE	DWN	APVD
	A	REVISED PER ECR-21-117185	25OCT2021	PJ	VS



- PARTS MUST COMPLY WITH SOLDERABILITY SPEC. 109-11-3.
- CONTACT IS PLATED OVERALL WITH .000050 NICKEL, THEN .000030 GOLD OVER CONTACT LENGTH INDICATED AND MATTE TIN ON SOLDER TAIL END.
- DIMENSION SHOWN REPRESENT PRODUCT IN DRY CONDITION. ADDITIONAL 2% GROWTH DUE TO END USE LOCATION MOISTURE ABSORPTION MAY OCCUR AND SHOULD BE ACCOUNTED FOR.

1586522-2	NYLON-NATURAL	COPPER ALLOY-GOLD (triangle 2)
ASSEMBLY NO.	HSG, MATL& COLOR	PIN MATL & FINISH

RECOMMENDED LAYOUT FOR
1.575[.062] THICK P.C. BOARD

METRIC

THIS DRAWING IS A CONTROLLED DOCUMENT.

DIMENSIONS:	TOLERANCES UNLESS OTHERWISE SPECIFIED:
mm [INCHES]	
	0 PLC ± -
	1 PLC ± -
	2 PLC ± -
	3 PLC ± -
	4 PLC ± -
ANGLES ± -	± -

MATERIAL SEE TABLE FINISH SEE TABLE

DWN ARJUN	07OCT05
CHK D. COLEY	18OCT2005
APVD D. COLEY	18OCT2005
PRODUCT SPEC	
APPLICATION SPEC	
WEIGHT	-

tyco Electronics		Tyco Electronics Corporation Harrisburg, PA 17105-3608	
NAME 16 CIRCUIT COMMERCIAL MATE-N-LOK(TM) HEADER			
SIZE	CAGE CODE	DRAWING NO	RESTRICTED TO
A3	00779	C-1586522	-

CUSTOMER DRAWING SCALE 2:1 SHEET 1 OF 1 REV A