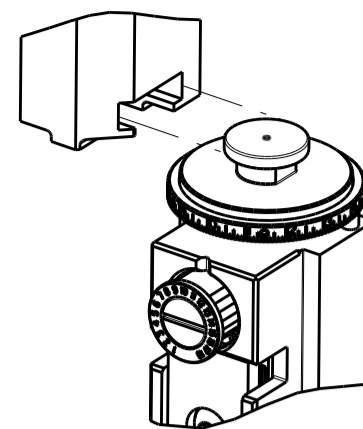


| PART NUMBER | REVISION | DESCRIPTION | FEED TYPE |
|-------------|----------|---------------------------------|-----------|
| 2266418-2 | C | FINE CRIMP HEIGHT ADJUST | PNEUMATIC |
| 7-2266418-2 | C | PNEUMATIC AND CRIMP TOOLING KIT | PNEUMATIC |
| 7-2266418-7 | A | CRIMP TOOLING KIT | - |

ATLANTIC VERSION TERMINATOR INTERFACE ADAPTER

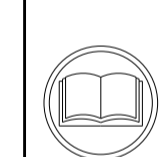


| APPLICATOR DATA | | |
|-----------------|----------------|------|
| CRIMP | SIZE | TYPE |
| WIRE | 3.30 mm [.130] | F |
| INSUL | 3.94 mm [.155] | O |

APPLICATOR INSTRUCTIONS 408-35042

| TERMINAL DATA: KOSTAL TERMINAL KOSTAL CRIMP SPECIFICATION | | | |
|---|-----------------|------------------------------|-----------------|
| TERMINAL NAME: SLK 2.8 | | | |
| WIRE STRIP LENGTH | | INSULATION DIAMETER RANGE | |
| 5.00-5.60 mm [.197-.220 IN] | | ∅3.40-3.70 mm [.134-.146 IN] | |
| TERMINAL APPLICATION SPECIFICATION | 00074173 | | |
| TERMINALS APPLIED | | | |
| TE TERMINAL | KOSTAL TERMINAL | TE TERMINAL | KOSTAL TERMINAL |
| 1572233-1 | 22124499720 | 1572899-1 | 10124499110 |
| 1572233-2 | 22125499720 | 1572899-2 | 10140499110 |
| 1572233-3 | 22140499720 | 1572899-3 | 10125499110 |

| WIRE SIZE | CRIMP HEIGHT mm [INCH] | CRIMP HEIGHT REFERENCE SETTING |
|-----------|----------------------------|--------------------------------|
| 4.00mm2 | 1.95+/-0.05 [.077+/- .002] | 7.8 |



- ▲ RECOMMENDED SPARE PARTS
- ▲ REFER TO SUPPLIED INSTRUCTION SHEET FOR CLEANING, LUBRICATION AND STORAGE OF APPLICATOR.
- ▲ APPLY PART NUMBER 2-23419-6 LOCTITE TO THREADS OF ITEM 242.
- ▲ CRIMP HEIGHT REFERENCE SETTING WAS THE SETTING USED WHEN THE APPLICATOR WAS QUALIFIED AT THE FACTORY. ADJUSTMENT MAY BE NECESSARY WHEN RUNNING APPLICATOR IN THE FIELD.
- ▲ FEED MUST BE SET TO USE THE SLOT IN THE CARRIER STRIP.
- 6. UNLESS SPECIFIED OTHERWISE TORQUE VALUES SHALL BE USED PER DOCUMENT, 101-35000.
- ▲ TERMINAL PITCH NOT COMPATIBLE WITH MECHANICAL FEED.

***WARNING**
ON INSTALLATION, SET WIRE DISC TO CRIMP HEIGHT REFERENCE SETTING FOR LARGEST WIRE SIZE. CRIMP HEIGHT REFERENCE SETTINGS GREATER THAN THE VALUE SHOWN MAY CAUSE DAMAGE TO THE CRIMP TOOLING. REFER TO THE INSTRUCTION SHEET FOR PROPER SETUP AND ADJUSTMENTS.

| LOC | DIST | REVISIONS | | | | | |
|-----|------|-----------|-----|---------------|-----------|-----|------|
| A | 66 | P | LTN | DESCRIPTION | DATE | OWN | APVD |
| | | A | | RELEASED | 02SEP2014 | RK | GB |
| | | A1 | | ECR-14-015266 | 15OCT2014 | KH | UG |
| | | B | | ECR-19-008665 | 01JUN2019 | TB | CT |
| | | C | | ECR-19-011881 | 29JUL2019 | FJ | TE |

| | | | | | |
|---|-----|-----|-------------|-------------------------------------|---------|
| - | 1 | 1 | 1803078-3 | SPACER, PRECISION | 259 |
| - | 1 | 1 | 2119641-1 | FEED CAM, AIR FEED | 248 |
| - | 1 | 1 | 2119082-4 | CAM, SNAIL, INSULATION ADJUSTMENT | 244 |
| - | 1 | 1 | 2079764-1 | WASHER, WAVE SPRING, CREST-TO-CREST | 243 |
| ▲ | 1 | 1 | 2119083-1 | RETAINER, INSULATION DIAL | 242 |
| - | 1 | 1 | 7-18023-7 | SCR, SKT HD CAP M3 X 4.0 | 241 |
| - | 1 | 1 | 2844940-1 | AIR FEED MODULE | 238 |
| - | REF | REF | 994970-2 | COUNTER, MAGNETIC | 164 |
| - | 1 | 1 | 2844908-1 | SCREW, LOCKING | 99 |
| - | 1 | 1 | 2844907-1 | POST, LOCKING | 98 |
| - | 1 | 1 | 1-455888-9 | SPACER, CRIMPER | 82 |
| - | 1 | 1 | 1803607-3 | DOCUMENTATION PACKAGE | 71 |
| - | 1 | 1 | 2119791-9 | DEPRESSOR, WIRE | 70 |
| - | 1 | 1 | 2119740-1 | TAG, IDENTIFICATION | 67 |
| - | 2 | 2 | 2168078-1 | SCREW, DRIVE, RH, RoHS, 2 x .188 | 66 |
| - | 1 | 1 | 2168083-2 | SCR, SKT HD CAP, RoHS, M4 X 8.0 | 60 |
| - | 1 | 1 | 5-18022-5 | SCR, HEX HD CAP, M4 X 6.0 | 59 |
| ▲ | 1 | 1 | 1338685-1 | PAWL, FEED | 56 |
| - | 4 | 4 | 2168083-3 | SCR, SKT HD CAP, RoHS, M4 X 12.0 | 54 |
| - | 2 | 2 | 1-2168083-0 | SCR, SKT HD CAP, RoHS, M4 X 10 | 53 |
| - | 1 | 1 | 5018030-1 | NUT, HEX, REG, RoHS, M3 | 52 |
| - | 1 | 1 | 811242-5 | BUMPER, HOLD DOWN | 51 |
| - | 1 | 1 | 690753-2 | SPACER, TONKER | 50 |
| - | 1 | 1 | 18023-9 | SCR, SKT HD CAP M4 X 6.0 | 49 |
| - | 1 | 1 | 1803583-9 | APPLICATOR BASIC ASSEMBLY, SF | 46 |
| - | 1 | 1 | 1803515-2 | RAM ASSEMBLY, SF ATLANTIC | 44 |
| - | 1 | 1 | 1803602-2 | SCR, BHSC, RoHS (M8 X 40) | 41 |
| - | 1 | 1 | 1752356-9 | SUPPORT, TERMINAL | 34 |
| - | 2 | 2 | 2079383-5 | SCR, BHSC, RoHS (M4 X 20) | 33 |
| - | 2 | 2 | 3-2844962-2 | SPACER, CYLINDRICAL, STRIP GUIDE | 30 |
| - | 1 | 1 | 2844992-2 | ASSEMBLY, STRIP GUIDE | 29 |
| - | 1 | 1 | 455888-3 | SPACER, CRIMPER | 28 |
| - | 1 | 1 | 1320928-6 | STRIP GUIDE | 24 |
| - | 1 | 1 | 2168083-2 | SCR, SKT HD CAP, RoHS, M4 X 8.0 | 21 |
| - | 2 | 2 | 1-18028-2 | WASHER, FLAT, REG M4 | 20 |
| - | 1 | 1 | 2119533-1 | STRIPPER, SIDE FEED | 19 |
| ▲ | 1 | 1 | 2119806-1 | INSERT, SHEAR | 13 |
| - | 1 | 1 | 3-22280-3 | SPRING, COMPRESSION | 12 |
| - | 1 | 1 | 1-356885-4 | STOP, SHEAR | 11 |
| ▲ | 1 | 1 | 2119805-1 | SHEAR HOLDER, FRONT | 10 |
| ▲ | 1 | 1 | 318707-1 | FLOATING SHEAR, FRONT | 9 |
| ▲ | 1 | 2 | 1633136-1 | ANVIL, COMBINATION .130 | 8 |
| - | - | - | - | - | 7 |
| - | - | - | - | - | 6 |
| - | 1 | 1 | 2119757-8 | DEPRESSOR, SHEAR | 5 |
| - | 1 | 1 | 238011-3 | BLOCK, CRIMPER SPACER | 4 |
| ▲ | 1 | 2 | 4-1803018-2 | CRIMPER, INSULATION O | 3 |
| - | 1 | 1 | 455888-8 | SPACER, CRIMPER | 2 |
| ▲ | 1 | 2 | 2-1752057-0 | CRIMPER, WIRE PREMIUM, STEPPED | 1 |
| - | 77 | 72 | -2 | PART NO | ITEM NO |

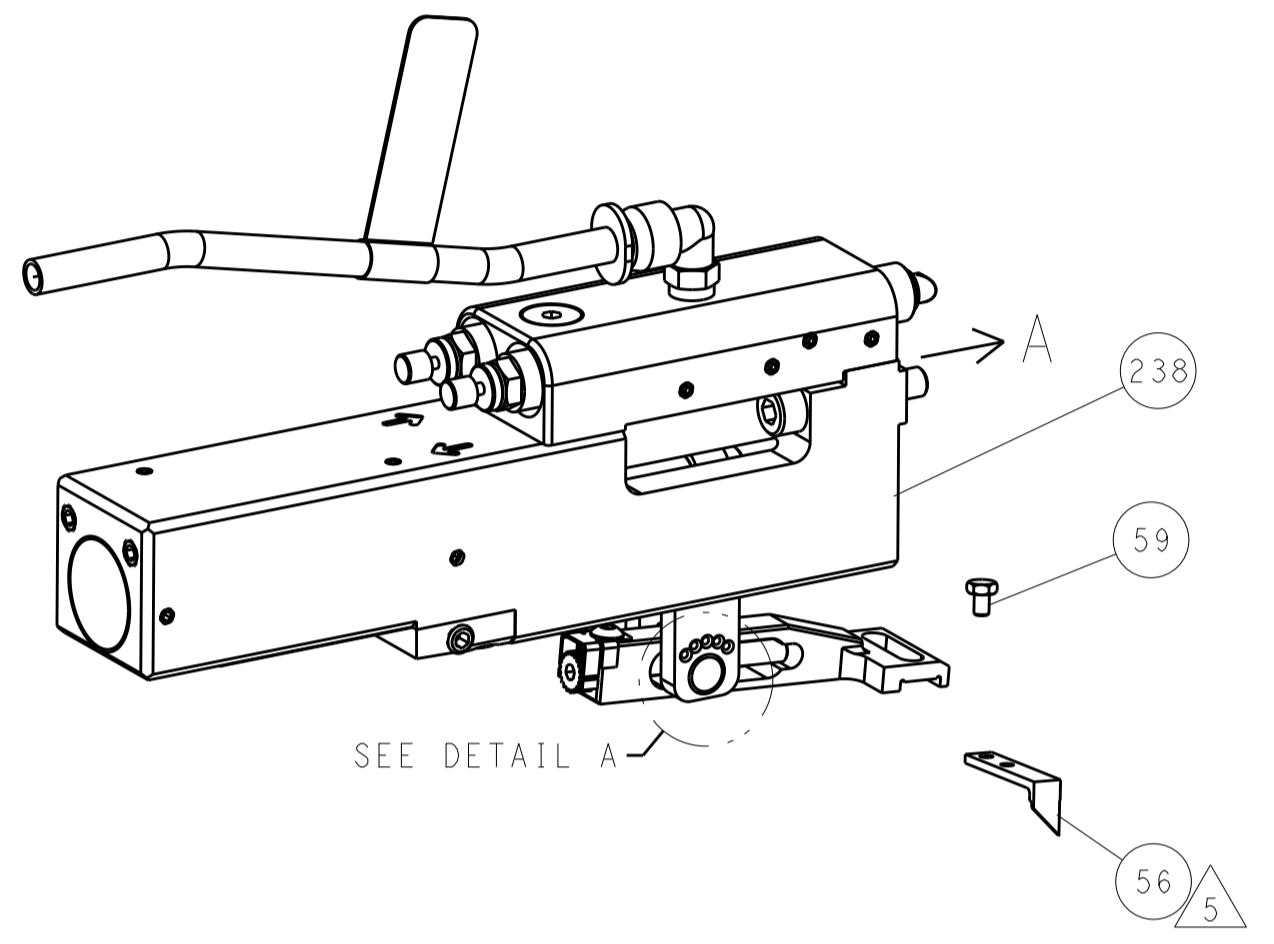
ATLANTIC VERSION
Shown on sheets 1 of 4 & 2 of 4
(Pacific version shown on sheets 3 of 4 & 4 of 4)

| DIMENSIONS: | | TOLERANCES UNLESS OTHERWISE SPECIFIED: | | DWG | | NAME | |
|-------------|---------|--|----------|--|-------------|--|---------------|
| mm | 0 PLC ± | 1 PLC ± | 2 PLC ± | Y. YIN | 22 JUL 2014 | STE TE Connectivity Harrisburg, PA 17105-3608 | |
| | 3 PLC ± | 4 PLC ± | ANGLES ± | G. BAILEY | 22 JUL 2014 | Ocean Side Feed Applicator | |
| MATERIAL | FINISH | WEIGHT | SCALE | APVD | U. GUO | 22 JUL 2014 | RESTRICTED TO |
| | | | 1:2 | PRODUCT SPEC | | | |
| | | | | APPLICATION SPEC | | | |
| | | | | SIZE | CAGE CODE | DRAWING NO | |
| | | | | A1 | 00779 | 2266418 | |
| | | | | Customer Accessible Production Drawing | | SHEET 1 OF 4 | REV C |

| LOC | | DIST | | REVISIONS | | | |
|-----|----|------|-----|-------------|------|-----|------|
| A | 66 | P | LTM | DESCRIPTION | DATE | DWN | APVD |
| | | - | | SEE SHEET 1 | - | - | - |

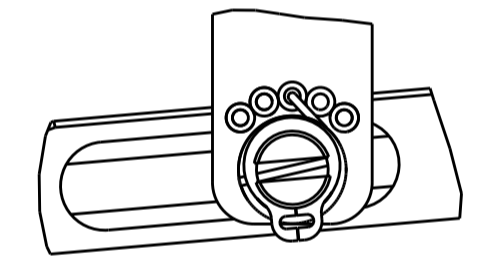
FEED TYPE

PNEUMATIC



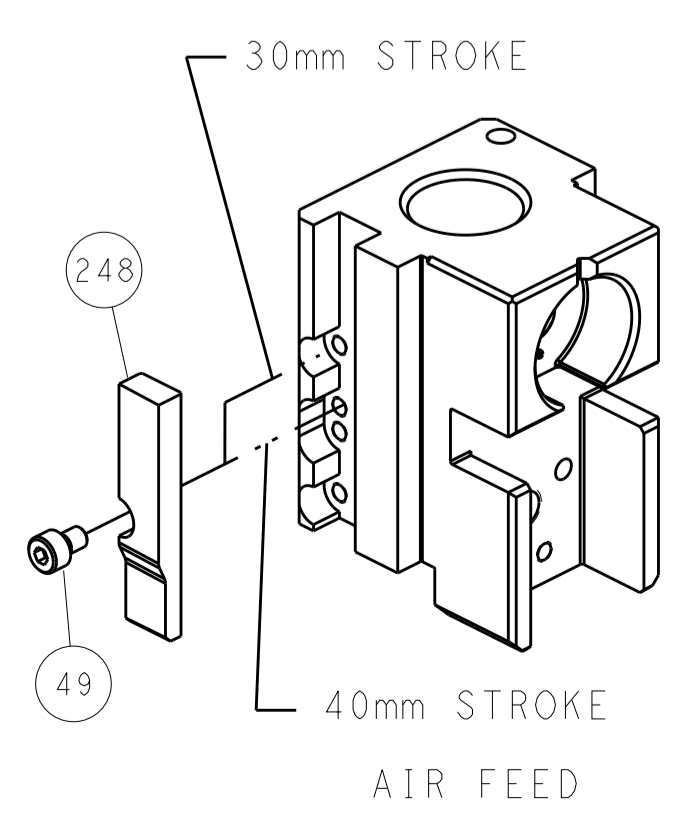
SEE DETAIL A

FEED SPRING SETTING POSITION (SHOWN FROM REAR SIDE)

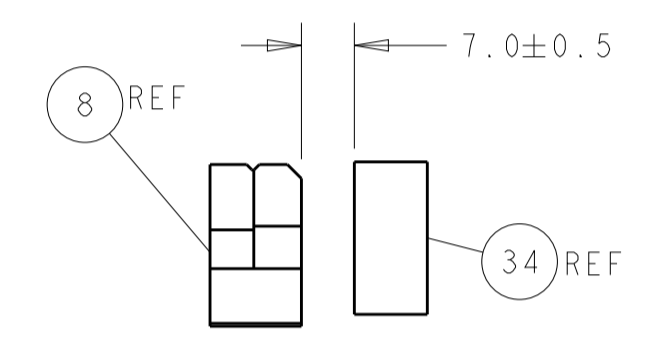
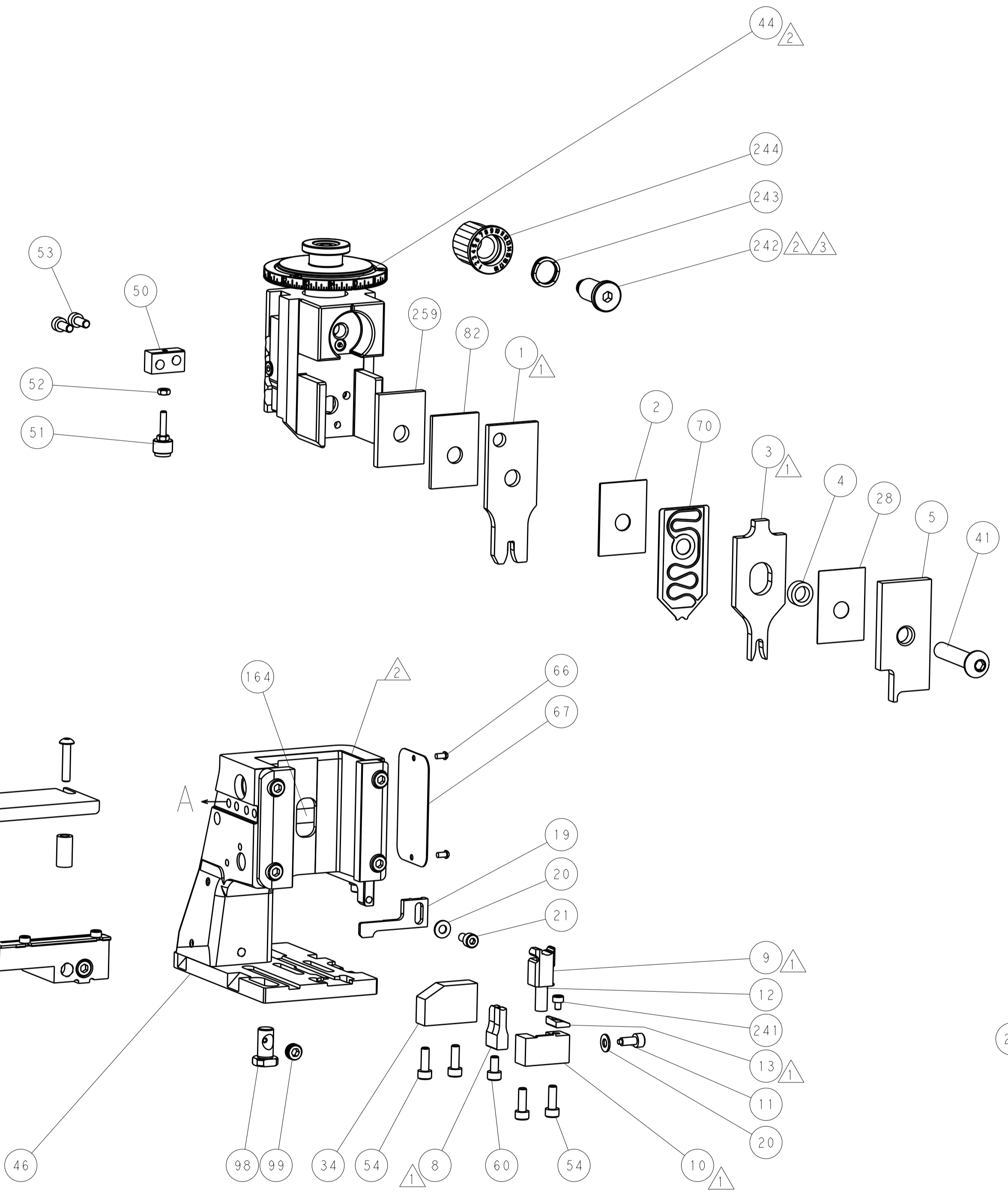


DETAIL A

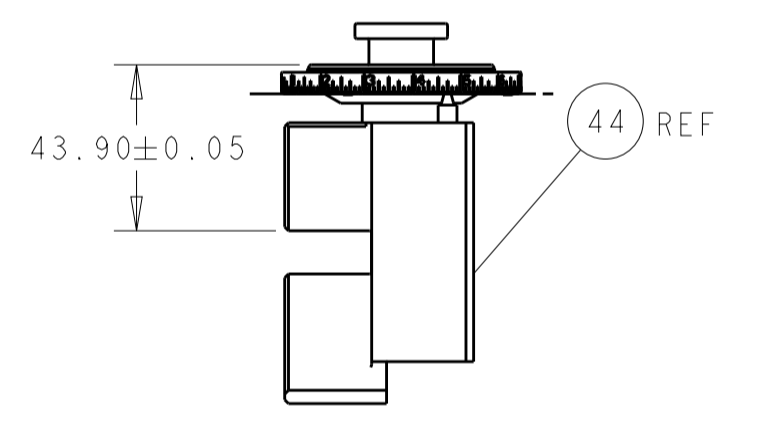
CAM POSITION



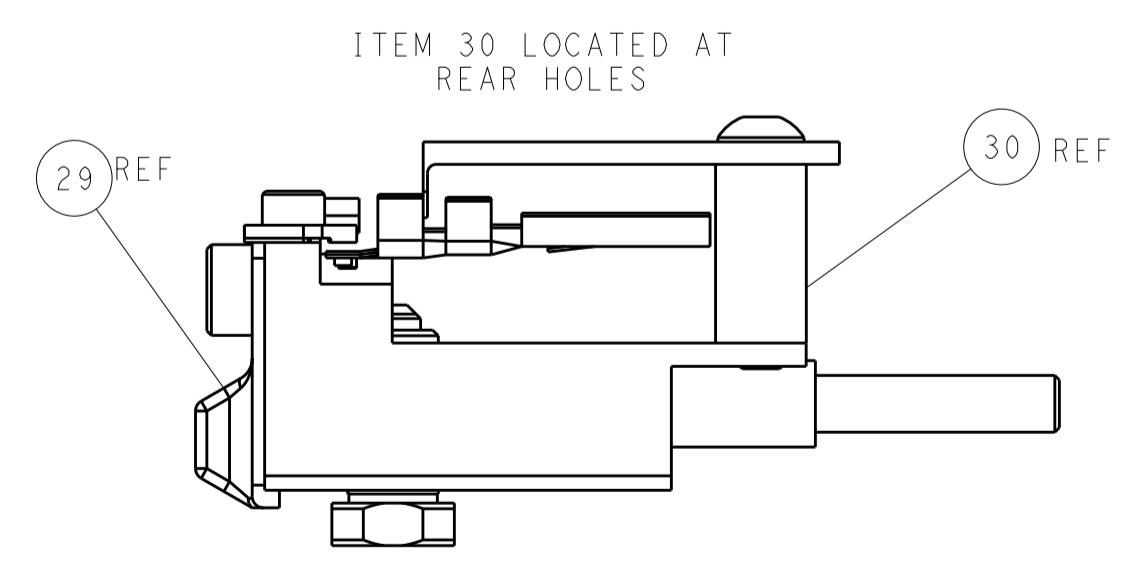
AIR FEED



TERMINAL SUPPORT LOCATION



RAM SET-UP



FEED TRACK POSITION GUIDE BY INSULATION BARREL

ATLANTIC VERSION
 Shown on sheets 1 of 4 & 2 of 4
 (Pacific version shown on sheets 3 of 4 & 4 of 4)

| | | | | | | | |
|--|---------|--|---------|----------------------------------|---------|--|--|
| DIMENSIONS: | | TOLERANCES UNLESS OTHERWISE SPECIFIED: | | DWN T. YIN 22 JUL 2014 | | TE Connectivity Harrisburg, PA 17105-3608 | |
| mm | 0 PLC ± | 1 PLC ± | 2 PLC ± | 3 PLC ± | 4 PLC ± | NAME Ocean Side Feed Applicator | |
| ANGLES | FINISH | | | APVD G. BAILEY 22 JUL 2014 | | RESTRICTED TO | |
| MATERIAL | WEIGHT | | | APVD H. GUO 22 JUL 2014 | | SIZE A1 | |
| Customer Accessible Production Drawing | | | | SCALE 1:2 | | SHEET 2 OF 4 | |
| | | | | REV C | | | |

| PART NUMBER | REVISION | DESCRIPTION | FEED TYPE |
|-------------|----------|--------------------------|-----------|
| 2-2266418-2 | C | FINE CRIMP HEIGHT ADJUST | PNEUMATIC |
| 7-2266418-7 | A | CRIMP TOOLING KIT | - |

PACIFIC VERSION TERMINATOR
 INTERFACE ADAPTER



| APPLICATOR DATA | | |
|-----------------|----------------|------|
| CRIMP | SIZE | TYPE |
| WIRE | 3.30 mm [.130] | F |
| INSUL | 3.94 mm [.155] | O |

APPLICATOR INSTRUCTIONS
 408-35042

| TERMINAL DATA: KOSTAL TERMINAL | | KOSTAL CRIMP SPECIFICATION | |
|--|-----------------|---|-----------------|
| TERMINAL NAME: SLK 2.8 | | | |
| WIRE STRIP LENGTH 5.00-5.60 mm [1.97-.220 IN] | | INSULATION DIAMETER RANGE Ø3.40-3.70 mm [1.34-.146 IN] | |
| TERMINAL APPLICATION SPECIFICATION | 00074173 | - | - |
| TERMINALS APPLIED | | | |
| TE TERMINAL | KOSTAL TERMINAL | TE TERMINAL | KOSTAL TERMINAL |
| 1572233-1 | 22124499720 | 1572899-1 | 10124499110 |
| 1572233-2 | 22125499720 | 1572899-2 | 10140499110 |
| 1572233-3 | 22140499720 | 1572899-3 | 10125499110 |

| WIRE SIZE | CRIMP HEIGHT mm [INCH] | CRIMP HEIGHT REFERENCE SETTING |
|-----------|----------------------------|--------------------------------|
| 4.00mm2 | 1.95+/-0.05 [1.077+/-0.02] | 7.8 |



- 1 RECOMMENDED SPARE PARTS
- 2 REFER TO SUPPLIED INSTRUCTION SHEET FOR CLEANING, LUBRICATION AND STORAGE OF APPLICATOR.
- 3 APPLY PART NUMBER 2-23419-6 LOCTITE TO THREADS OF ITEM 242.
- 4 CRIMP HEIGHT REFERENCE SETTING WAS THE SETTING USED WHEN THE APPLICATOR WAS QUALIFIED AT THE FACTORY. ADJUSTMENT MAY BE NECESSARY WHEN RUNNING APPLICATOR IN THE FIELD.
- 5 FEED MUST BE SET TO USE THE SLOT IN THE CARRIER STRIP.
- 6 UNLESS SPECIFIED OTHERWISE TORQUE VALUES SHALL BE USED PER DOCUMENT, 101-35000.
- 7 TERMINAL PITCH NOT COMPATIBLE WITH MECHANICAL FEED.

***WARNING**
 ON INSTALLATION, SET WIRE DISC TO CRIMP HEIGHT REFERENCE SETTING FOR LARGEST WIRE SIZE. CRIMP HEIGHT REFERENCE SETTINGS GREATER THAN THE VALUE SHOWN MAY CAUSE DAMAGE TO THE CRIMP TOOLING. REFER TO THE INSTRUCTION SHEET FOR PROPER SETUP AND ADJUSTMENTS.

| LOC | DIST | REV | DATE | BY | APPV |
|-----|------|-----|------|----|------|
| A | 66 | | | | |

| REVISIONS | | | | |
|-----------|------|-------------|-------------------------------------|---------|
| REV | DATE | DESCRIPTION | DATE | BY |
| - | - | SEE SHEET 1 | - | - |
| - | 1 | 1803078-3 | SPACER, PRECISION | 259 |
| - | 1 | 2119082-4 | CAM, SNAIL, INSULATION ADJUSTMENT | 244 |
| - | 1 | 2079764-1 | WASHER, WAVE SPRING, CREST-TO-CREST | 243 |
| - | 1 | 2119083-1 | RETAINER, INSULATION DIAL | 242 |
| - | 1 | 7-18023-7 | SCR, SKT HD CAP M3 X 4.0 | 241 |
| - | 1 | 2844940-1 | AIR FEED MODULE | 238 |
| - | REF | 994970-2 | COUNTER, MAGNETIC | 164 |
| - | 1 | 2119641-2 | FEED CAM, AIR FEED | 151 |
| - | 1 | 2168083-8 | SCR, SKT HD CAP, RoHS, M4 X 16 | 144 |
| - | 4 | 2168083-9 | SCR, SKT HD CAP, RoHS, M4 X 20 | 143 |
| - | - | 2119653-2 | FEED CAM, POST FEED | 142 |
| - | 1 | 1-1803583-0 | APPLICATOR BASIC ASSEMBLY, SF | 141 |
| - | 1 | 1803516-2 | RAM ASSEMBLY, SF PACIFIC | 140 |
| - | 1 | 2844908-1 | SCREW, LOCKING | 99 |
| - | 1 | 2844907-1 | POST, LOCKING | 98 |
| - | 1 | 1-455888-9 | SPACER, CRIMPER | 82 |
| - | 1 | 1803607-3 | DOCUMENTATION PACKAGE | 71 |
| - | 1 | 2119791-9 | DEPRESSOR, WIRE | 70 |
| - | 1 | 2119740-1 | TAG, IDENTIFICATION | 67 |
| - | 2 | 2168078-1 | SCREW, DRIVE, RH, RoHS, 2 x .188 | 66 |
| - | 1 | 5-18022-5 | SCR, HEX HD CAP, M4 X 6.0 | 59 |
| - | 1 | 1338685-1 | PAWL, FEED | 56 |
| - | 2 | 1-2168083-0 | SCR, SKT HD CAP, RoHS, M4 X 10 | 53 |
| - | 1 | 5018030-1 | NUT, HEX, REG, RoHS, M3 | 52 |
| - | 1 | 811242-5 | BUMPER, HOLD DOWN | 51 |
| - | 1 | 690753-2 | SPACER, TONKER | 50 |
| - | 1 | 18023-9 | SCR, SKT HD CAP M4 X 6.0 | 49 |
| - | 1 | 1803602-2 | SCR, BHSC, RoHS (M8 X 40) | 41 |
| - | 1 | 1752356-9 | SUPPORT, TERMINAL | 34 |
| - | 2 | 2079383-5 | SCR, BHSC, RoHS (M4 X 20) | 33 |
| - | 2 | 3-2844962-2 | SPACER, CYLINDRICAL, STRIP GUIDE | 30 |
| - | 1 | 2844992-2 | ASSEMBLY, STRIP GUIDE | 29 |
| - | 1 | 455888-3 | SPACER, CRIMPER | 28 |
| - | 1 | 1320928-6 | STRIP GUIDE | 24 |
| - | 1 | 2168083-2 | SCR, SKT HD CAP, RoHS, M4 X 8.0 | 21 |
| - | 2 | 1-18028-2 | WASHER, FLAT, REG M4 | 20 |
| - | 1 | 2119533-1 | STRIPPER, SIDE FEED | 19 |
| - | 1 | 2119806-1 | INSERT, SHEAR | 13 |
| - | 1 | 3-22280-3 | SPRING, COMPRESSION | 12 |
| - | 1 | 1-356885-4 | STOP, SHEAR | 11 |
| - | 1 | 2119805-1 | SHEAR HOLDER, FRONT | 10 |
| - | 1 | 318707-1 | FLOATING SHEAR, FRONT | 9 |
| - | 1 | 1633136-1 | ANVIL, COMBINATION .130 | 8 |
| - | - | - | - | 7 |
| - | - | - | - | 6 |
| - | 1 | 2119757-8 | DEPRESSOR, SHEAR | 5 |
| - | 1 | 238011-3 | BLOCK, CRIMPER SPACER | 4 |
| - | 1 | 4-1803018-2 | CRIMPER, INSULATION O | 3 |
| - | 1 | 455888-8 | SPACER, CRIMPER | 2 |
| - | 1 | 2-1752057-0 | CRIMPER, WIRE PREMIUM, STEPPED | 1 |
| - | 77 | -22 | PART NO | ITEM NO |

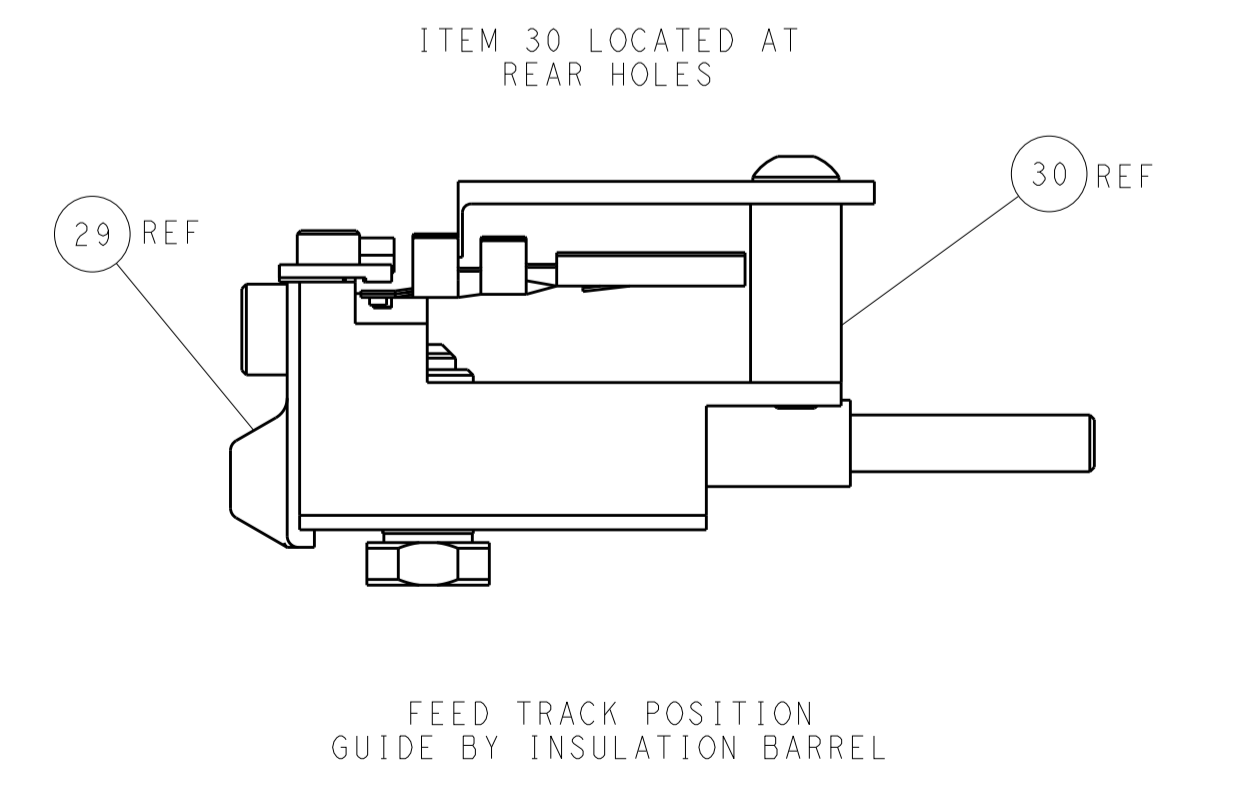
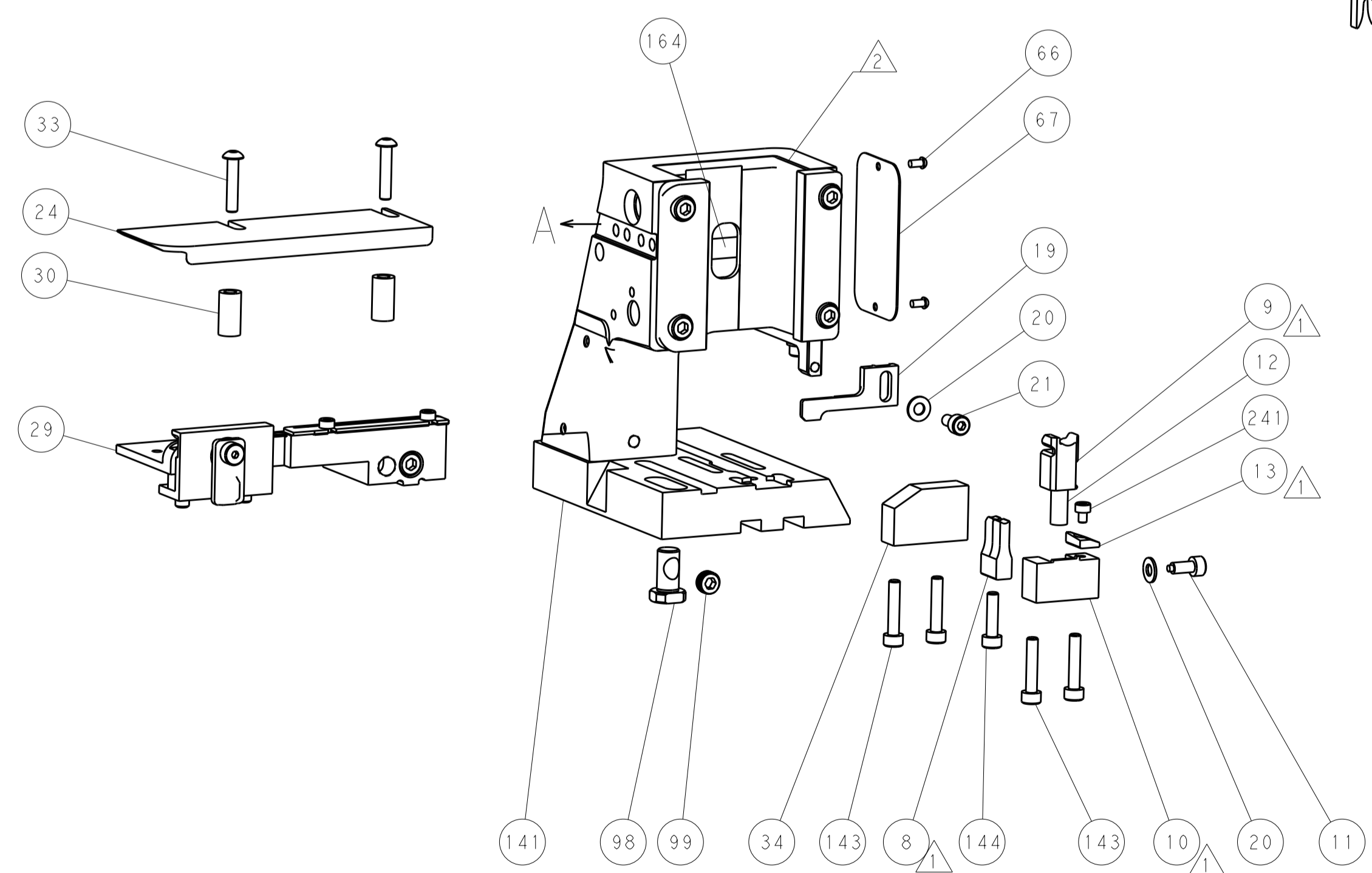
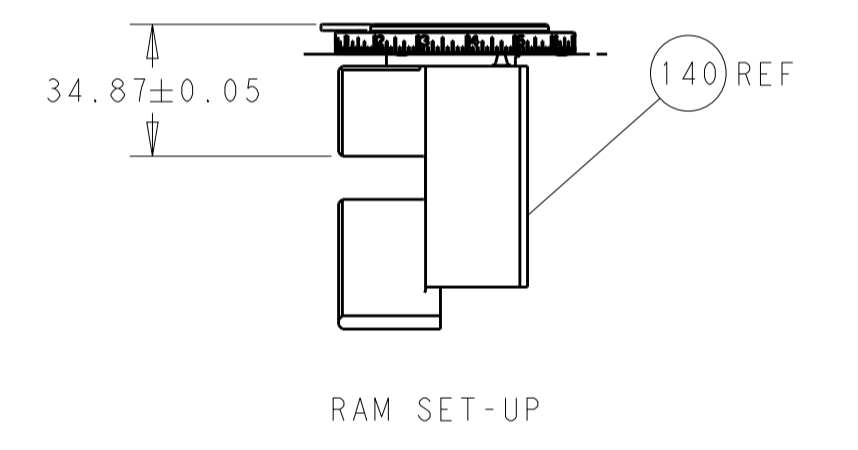
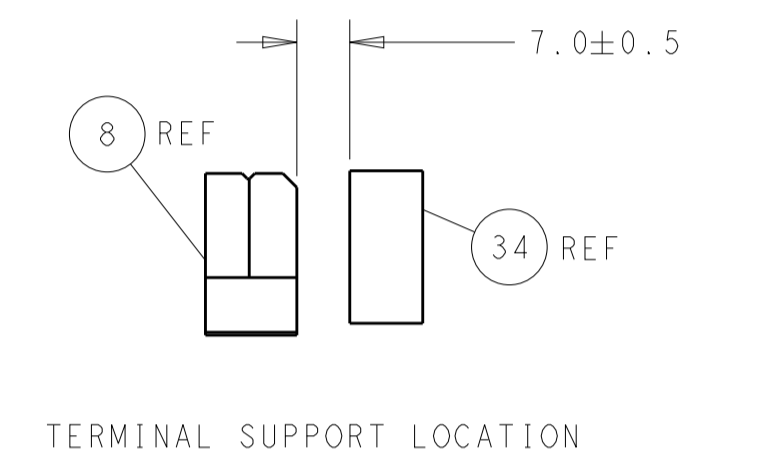
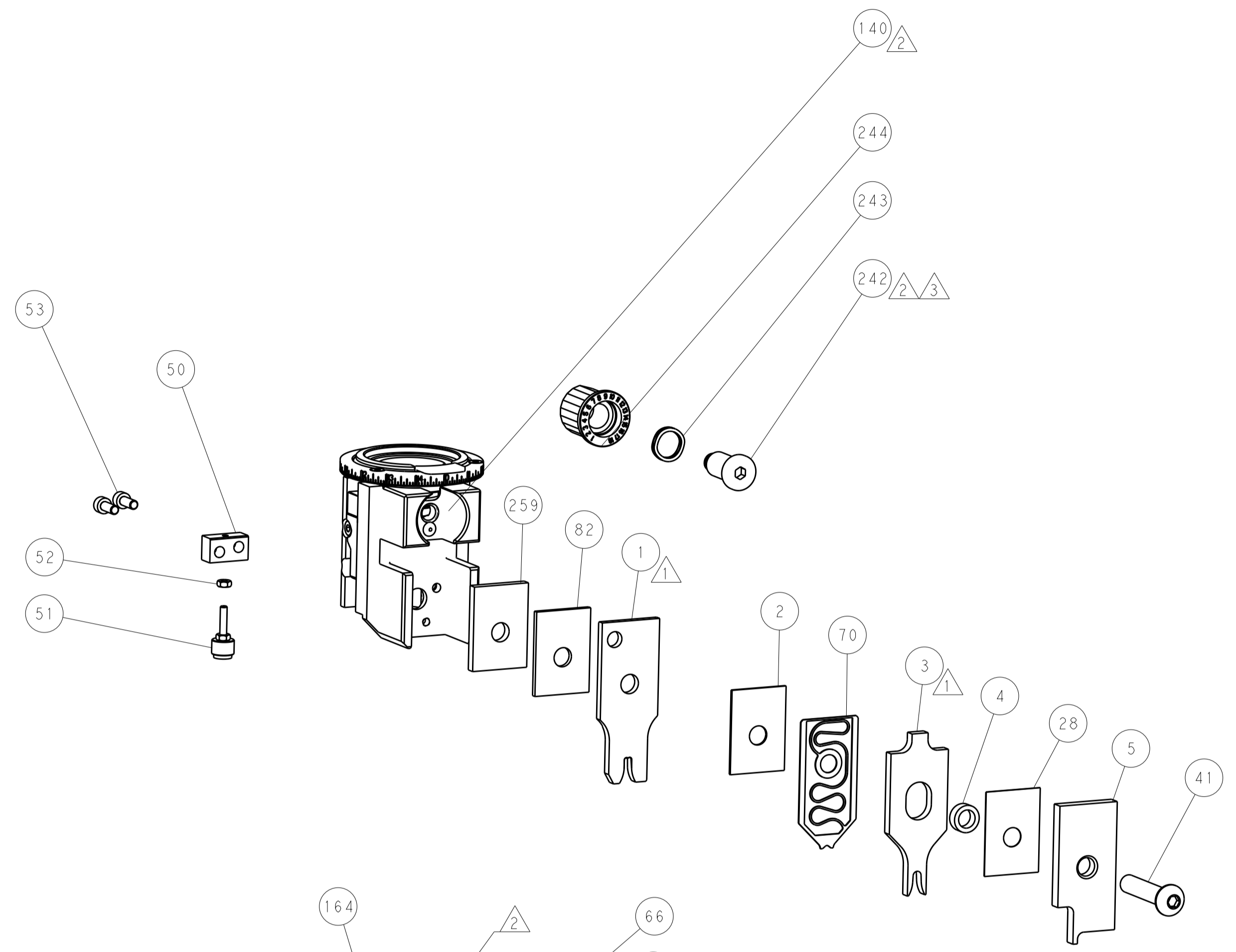
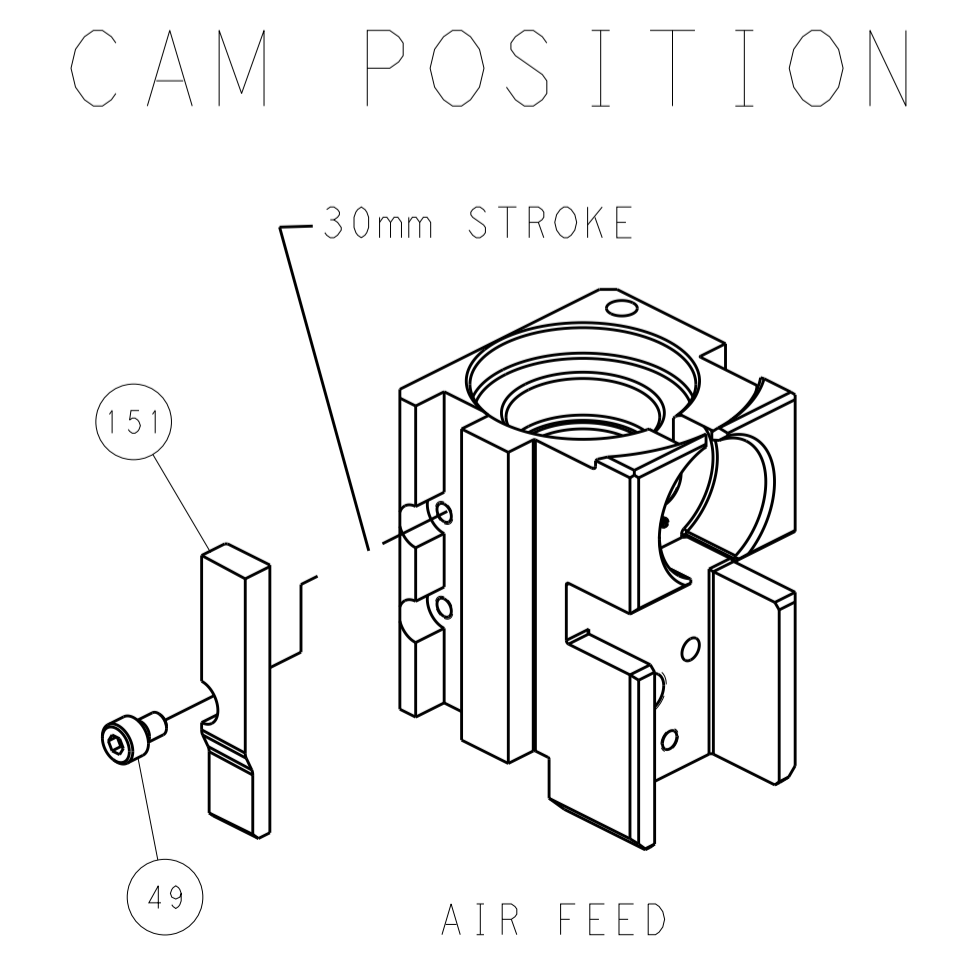
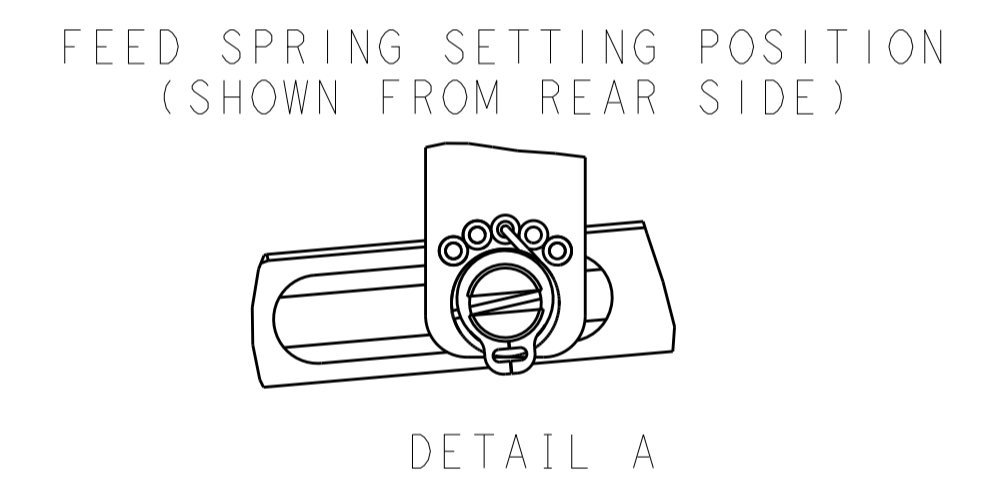
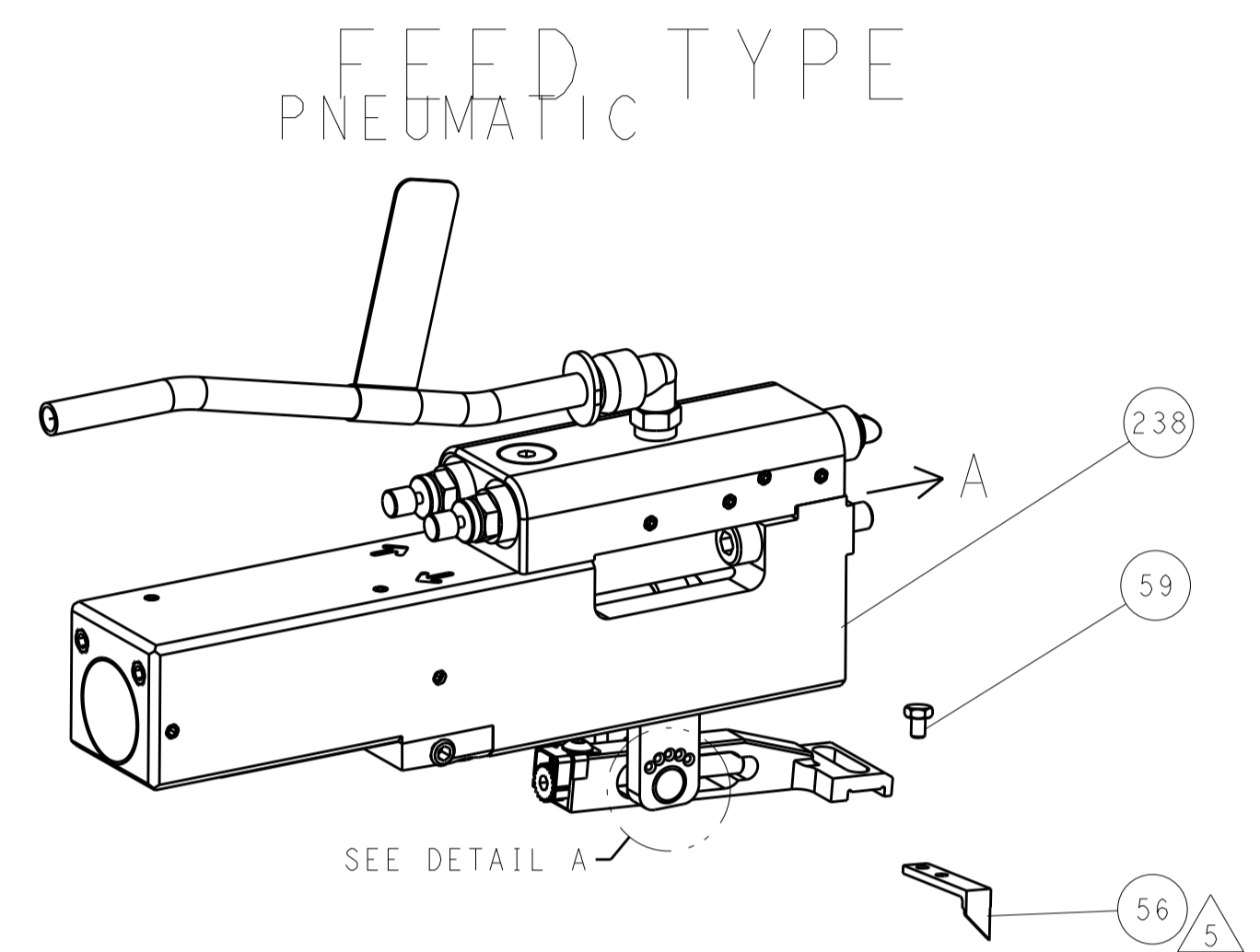
PACIFIC VERSION
 Shown on sheets 3 of 4 & 4 of 4
 (Atlantic version shown on sheets 1 of 4 & 2 of 4)

| DIMENSIONS: | | TOLERANCES UNLESS OTHERWISE SPECIFIED: | | MATERIAL: | | FINISH: | |
|-------------|---------|--|---------|-----------|---------|---------|--------|
| mm | 0 PLC ± | 1 PLC ± | 2 PLC ± | 3 PLC ± | 4 PLC ± | ANGLES | FINISH |
| | | | | | | | |

| | | | | | |
|--------------|-------------|------------------|-------------|-------|-------------|
| DATE | 22 JUL 2014 | CHK | G. BAILEY | DATE | 22 JUL 2014 |
| APPV | J. GUO | DATE | 22 JUL 2014 | NAME | |
| PRODUCT SPEC | | APPLICATION SPEC | | SIZE | A1 |
| WEIGHT | | SCALE | 1:2 | SHEET | 3 OF 4 |
| CAGE CODE | 00779 | DRAWING NO | 2266418 | REV | C |

Customer Accessible Production Drawing

| LOC | | DIST | | REVISIONS | | | |
|-----|----|------|-----|-------------|------|-----|------|
| A | 66 | P | LTM | DESCRIPTION | DATE | OWN | APVD |
| - | - | - | - | SEE SHEET 1 | - | - | - |
| | | | | | | | |
| | | | | | | | |



PACIFIC VERSION
 Shown on sheets 3 of 4 & 4 of 4
 (Atlantic version shown on sheets 1 of 4 & 2 of 4)

| | | | | | | | |
|--|---------|--|---------|--------------------------|---------|---|----------|
| DIMENSIONS: | | TOLERANCES UNLESS OTHERWISE SPECIFIED: | | DWG: Y. YIN 22JUL2014 | | TE Connectivity | |
| mm | 0 PLC ± | 1 PLC ± | 2 PLC ± | 3 PLC ± | 4 PLC ± | ANGLES ± | FINISH ± |
| MATERIAL: | | | | CHK: G. BAILEY 22JUL2014 | | NAME: Ocean Side Feed Applicator | |
| APVD: H. GUO 22JUL2014 | | | | PRODUCT SPEC: | | SIZE: CAGE CODE: DRAWING NO: RESTRICTED TO: | |
| APPLICATION SPEC: | | | | WEIGHT: | | A1 00779 ©=2266418 | |
| Customer Accessible Production Drawing | | | | SCALE: 1:2 | | SHEET 4 OF 4 REV C | |