



(2.00 mm) .0787"

S2SD, S2SDT SERIES

TIGER EYE™ CABLE ASSEMBLY

SPECIFICATIONS

For complete specifications see www.samtec.com?S2SD or www.samtec.com?S2SDT

Insulator Material:

Black LCP

Contact Material:

BeCu

Plating:

Au over 50 μ" (1.27 μm) Ni

Wire:

24, 26, 28 or 30 AWG

Operating Temp Range:

-10 °C to +105 °C (PVC)

-40 °C to +125 °C (*Teflon®)

Current Rating

(S2SD-24/T2M):

3.8 A per pin

(2 pins powered)

Voltage Rating:

250 VAC

RoHS Compliant:

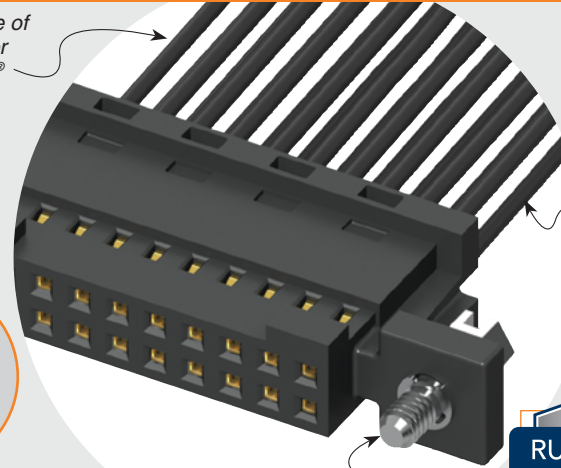
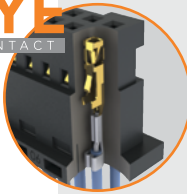
Yes

*DuPont™ Teflon® is a registered trademark of the E.I. du Pont de Nemours and Company or its affiliates.

Mates with:
T2M

Choice of PVC or Teflon® cable

TIGER EYE™
CONTACT



24, 26, 28 or 30 Wire gauge

Optional screw down

RUGGEDIZED
BY SAMTEC

- Tiger Eye™ contacts
- Retention latches

COMPONENTS

- For body, see www.samtec.com?ISD2
- For contacts, see www.samtec.com?CC81L or www.samtec.com?CC81R

ALSO AVAILABLE (MOQ Required)

- Other sizes

APPLICATION

-24C CABLE COLOR CODING	
PIN	COLOR
1	BROWN
2	RED
3	ORANGE
4	YELLOW
5	GREEN
6	VIOLET
7	GRAY
8	WHITE
9	BLACK
10	BLUE
ETC	REPEAT

Notes:

For wiring option information refer to drawing on web.

Teflon® cable is intended for crimp only. Contact Samtec for solderable cable applications.

Some lengths, styles and options are non-standard, non-returnable.

TYPE	PINS PER ROW	WIRE GAUGE	PLATING OPTION	ASSEMBLED LENGTH	END OPTION	END 2 OPTION
S2SD = Double Row PVC Cable	-05, -07, -10, -15, -20, -25, -30 (Standard sizes)	-24 -24C = Color Coded Cable (S2SD only)	-L = 10 μ" (0.25 μm) Gold on contact	- "XX.XX" = Wire Length in Inches (69.85 mm) 02.75" min.	-S = Single End -D = Double End	(Only available with -D, -DR & -DS) -NUS = Notch up, straight (Pin 1 to Pin N-1) -NDS = Notch down, straight (Pin 1 to Pin 2) -NUX = Notch up, crossed (Pin 1 to Pin N) -NDX = Notch down, crossed (Pin 1 to Pin 1)

Specify "S" for single ended and "D" for double ended.
 -(X)R = Retention Latch (-SR mates with T2M-WT)
 -(X)S = Screw Down (10 positions minimum) (mates with T2M-DS)

Dimensions:
 -SR: (2.11) .083, (2.64) .104
 -D-NUS: (5.15) .203, (7.52) .296, (2.00) .0787, (4.42) .174, (11.38) .448, (1.60) .063
 No. of positions x (2.00) .0787 + (3.50) .138

Due to technical progress, all designs, specifications and components are subject to change without notice.