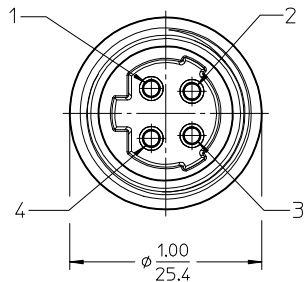
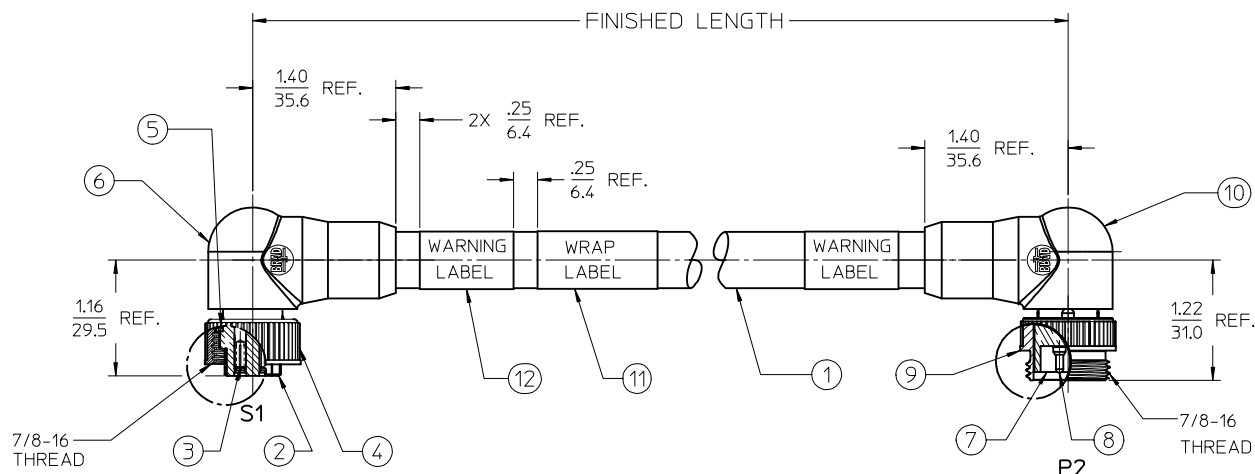
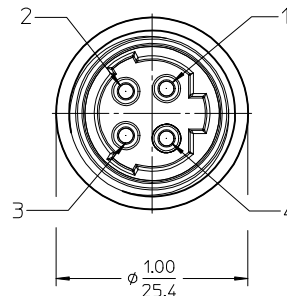


S1		P2
1	BLACK #1	1
2	BLACK #2	2
3	BLACK #3	3
4	GREEN/YELLOW	4

WIRING DIAGRAM



FEMALE FACE VIEW
SCALE: 2X



MALE FACE VIEW
SCALE: 2X

NOTES:

- 1) MATERIAL: SEE TABLE
- 2) FINISHES: SEE TABLE
- 3) WRAP LABEL IS MARKED WITH P/N, DATE CODE VOLTAGE & AMPERAGE
- 4) MATES WITH: MINI CHANGE 4 POLE RECEPTACLE (ALT KEY)
- 5) ELECTRICAL DATA:
14AWG UL TYPE: TC-ER STRANDED CABLE
MAX VOLTAGE: 600V
MAX CURRENT: 15A
PROTECTION IP67 (WHEN MATED)
TEMPERATURE RANGE: -20°C TO 90°C
- 6) PACKAGING:
CABLE ASSEMBLIES ARE BAGGED SEPERATLY IN POLY BAGS WITH BAR CODE LABEL ATTACHED TO OUTSIDE OF BAG.

PART NUMBER LEGEND

114133K20MXXX

MC 4P FEM 90D TO MALE 90 DEG (EXT THD), ALT KEY
CABLE TYPE: 14 AWG TC ER, BLACK
FINISHED LENGTH:
M001= .1M
M010= 1.0M
M100= 10.0M

ITEM	QTY	DESCRIPTION	MATERIAL	FINISH
12	2	WARNING LABEL	VINYL	ORANGE/BLACK
11	1	WRAP LABEL	VINYL	BLACK/YELLOW
10	1	90 DEG OVERMOLD	PVC	BLACK
9	1	MALE COUPLING NUT	ZINC ALLOY	BLACK
8	4	CONTACT PIN	Cu ALLOY	GOLD PLATE
7	1	MALE INSERT	PVC	BLACK
6	1	90 DEG OVERMOLD	PVC	BLACK
5	1	FRICITION RING	NYLON	WHITE
4	1	FEMALE COUPLING NUT	ZINC ALLOY	BLACK
3	4	CONTACT SOCKET	Cu ALLOY	GOLD PLATE
2	1	FEMALE INSERT	PVC	BLACK
1	SEE NOTE 5	CABLE	TPE	BLACK

RELEASED EC NO: IPG2016-0734 DRAWN BY: DRWINRSTONE 2015/11/16 CHKD: KJOZWIK 2015/12/09 APPR: BWOODMAN 2016/02/29	QUALITY SYMBOLS ▽=0 ▽=0	GENERAL TOLERANCES (UNLESS SPECIFIED)		DIMENSION STYLE IN/MM		SCALE 1:1	DESIGN UNITS INCH	THIRD ANGLE PROJECTION	
		4 PLACES ± --- ± --- 3 PLACES ± --- ± --- 2 PLACES ± --- ± .01 1 PLACE ± 0.3 ± --- 0 PLACE ± --- ± ---	mm INCH DRAWN BY: RSTONE DATE: 2015/11/16 CHECKED BY: KJOZWIK DATE: 2015/12/09 APPROVED BY: BWOODMAN DATE: 2016/02/29	TITLE MINI CHANGE CABLE ASSY FEM 90D TO MALE 90D EXTERNAL THD, ALT KEY		MATERIAL NO. -		DOCUMENT NO. SD-130062-029	
DRAFT WHERE APPLICABLE MUST REMAIN WITHIN DIMENSIONS		THIS DRAWING CONTAINS INFORMATION THAT IS PROPRIETARY TO MOLEX INCORPORATED AND SHOULD NOT BE USED WITHOUT WRITTEN PERMISSION							