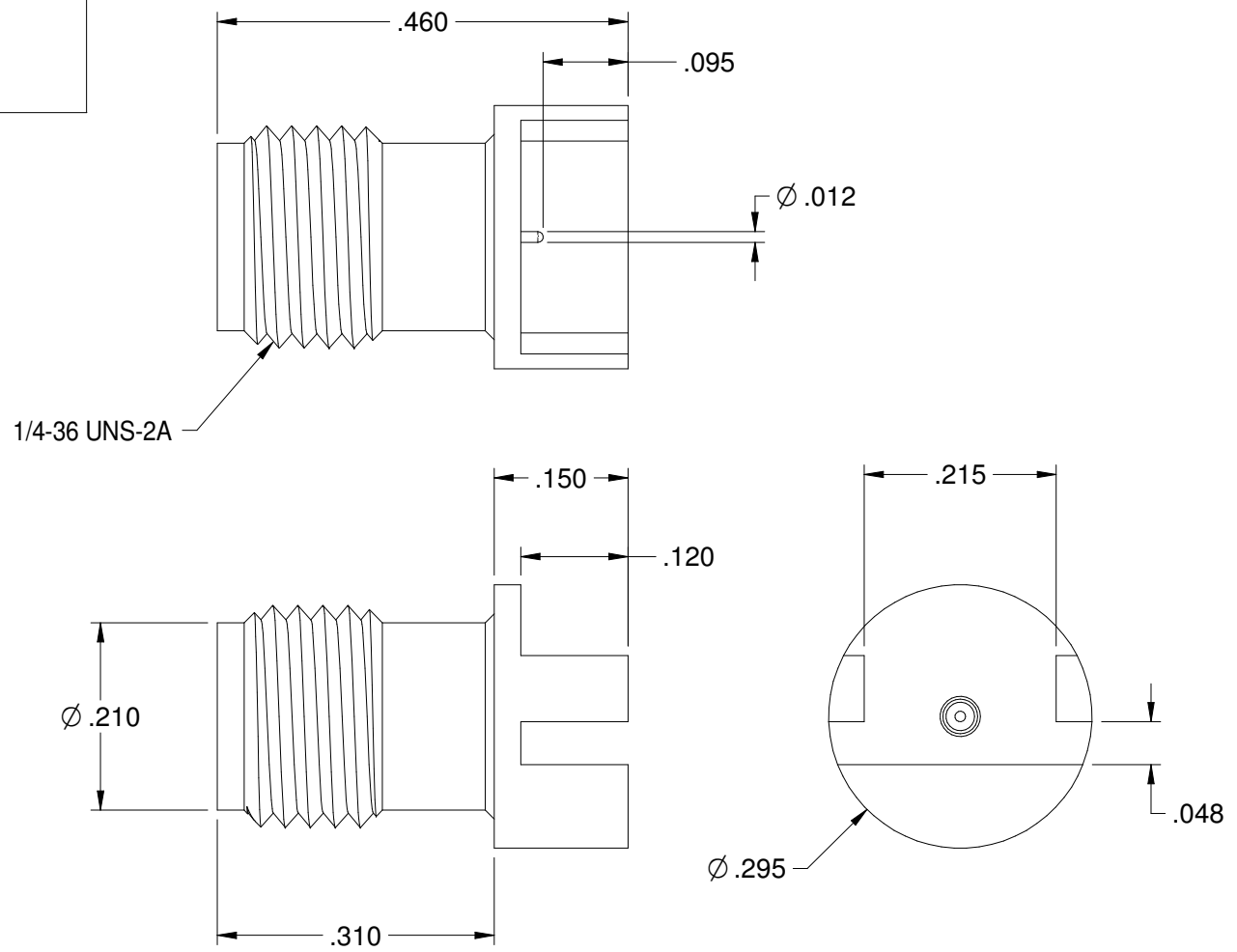
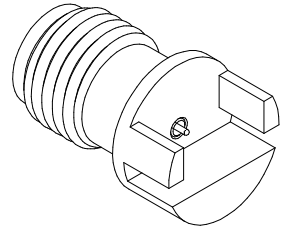


| REV | ECO         | DATE      |
|-----|-------------|-----------|
| 1   | ECO-19-0008 | 3/28/2019 |
| 1A  | ECO-19-0032 | 7/25/2019 |

| PART NUMBER  | ITEM ①<br>BODY   | ITEM ②<br>CONTACT   | ITEM ③<br>INSULATOR |
|--------------|--|---|---------------------|
| 145-0701-851 | BRASS<br>GOLD PL .00003 MIN<br>OVER NICKEL PL.00005<br>MIN OVER COPPER | BERYLLIUM COPPER<br>GOLD PL .00005 MIN<br>OVER NICKEL PL.00005<br>MIN OVER COPPER | TEFLON              |



**SPECIFICATION:**

**ELECTRICAL:**  
 IMPEDANCE: 50 OHMS  
 FREQUENCY RANGE: 0-40 GHz  
 VSWR: 1.5 MAX  
 INSERTION LOSS: 0.05  $\sqrt{F}$  dB MAX (F IN GHz)  
 WORKING VOLTAGE: 250 VRMS MAX AT SEA LEVEL  
 DIELECTRIC WITHSTANDING VOLTAGE: 1000VRMS MIN AT SEA LEVEL  
 INSULATION RESISTANCE: 5000 MEGOHM MIN  
**CONTACT RESISTANCE:**  
 CENTER CONTACT - INITIAL 3 MILLIOHM MAX, AFTER ENVIRONMENTAL NOT APPLICABLE  
 OUTER CONDUCTOR - INITIAL 2 MILLIOHM MAX, AFTER ENVIRONMENTAL NOT APPLICABLE  
 RF LEAKAGE: -90dB TYPICAL AT 2.5GHz

**MECHANICAL:**  
 ENGAGEMENT/DISENGAGEMENT FORCE: 2 INCH-POUNDS MAX  
 MATING TORQUE: 7 TO 10 INCH-POUNDS  
 DURABILITY: 500 CYCLES MIN

**ENVIRONMENTAL:**  
 OPERATING TEMPERATUR: -40 TO 85°C  
 THERMAL SHOCK: MIL-STD-202, METHOD 107, CONDITION B  
 CORROSION: MIL-STD-202, METHOD 101, CONDITION B  
 SHOCK: MIL-STD-202, METHOD 213, CONDITION I  
 VIBRATION: MIL-STD-202, METHOD 204, CONDITION D  
 MOISTURE RESISTANCE: MIL-STD-202, MEHTOD 106

|  |  |  |                      |   |
|--|--|--|----------------------|---|
|  | Material:  | Model No. 145-0701-851                               | <b>JOHNSON</b>       |   |
|  | SEE NOTE   | RoHS2 <input checked="" type="checkbox"/> 2011/65/EU | Cage Code            | Title: 2.92mm END LAUNCH JACK FOR .042" BOARD |
| <small>The PROPRIETARY Document is property of Cinch Connectivity Solutions. No reproduction, modification, distribution, or disclosure is permitted without the clear written permission of Cinch Connectivity Solutions.</small><br><small>INTERPRET DRAWINGS IN ACCORDANCE WITH ASME Y14.5-2009</small> | Finish: .XX ±.01 .XXX ±.003 .XXXX ±.0010 ANGLES ±1°00' | UNLESS OTHERWISE SPECIFIED                           | 3RD ANGLE PROJECTION | Drawing No. 145-0701-851                      |
|  | SEE NOTE   | Drawn By: R.SHEN                                     | Date: 3/20/2019      | Rev. 1A                                       |
| Workmanship Size   |  |  | Size B               | DO NOT SCALE DRAWING                          |
|  |  |  |                      | Sheet 1 of 1                                  |