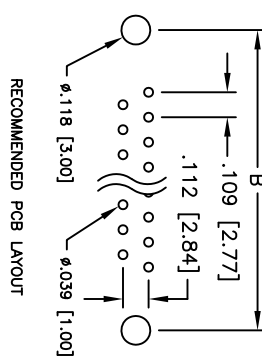
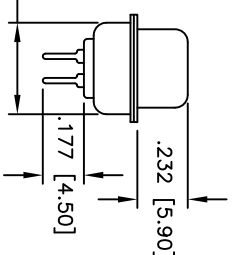
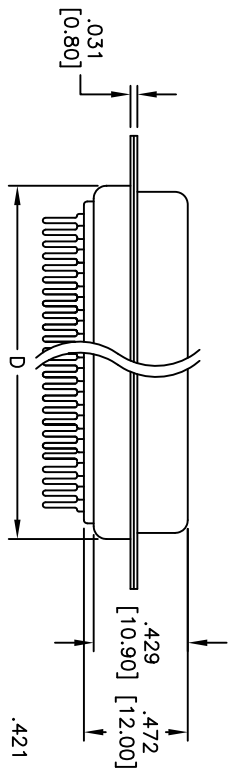
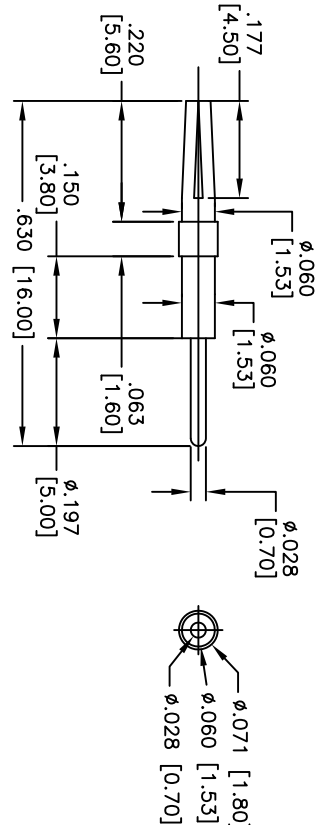
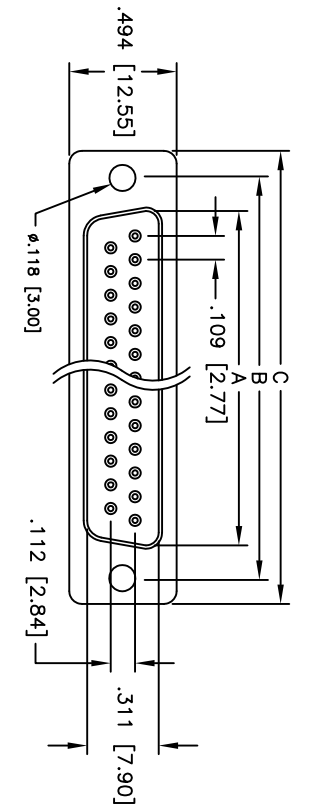


| Rev | AWO # | Description | Date | Appr |
|-----|-------|-------------|---------|------|
| - | | RELEASED | 5/11/10 | |

APPROVED: _____
 DATE: _____ TITLE: _____



Unit: Inch / mm

DIMENSIONS

| Positions | DIMENSIONS | | | |
|-----------|---------------|---------------|---------------|---------------|
| | A | B | C | D |
| 9 | .643 [16.33] | .984 [24.99] | 1.213 [30.81] | .756 [19.20] |
| 15 | .971 [24.66] | 1.312 [33.32] | 1.541 [39.14] | 1.091 [27.70] |
| 25 | 1.511 [38.38] | 1.852 [47.04] | 2.088 [53.04] | 1.618 [41.10] |
| 37 | 2.159 [54.84] | 2.500 [63.50] | 2.729 [69.32] | 2.256 [57.30] |
| 50 | 2.064 [52.43] | 2.406 [61.11] | 2.637 [67.00] | 2.169 [55.10] |

SPECIFICATIONS:

Material: Insulator: PBT, glass reinforced, rated UL 94V-0
 Insulator color: Black
 Contacts: Phosphor Bronze
 Shell: Steel, Tin plated
 Hardware: Brass, Nickel plated
 Plating: Gold flash over Nickel underplate overall
 Electrical: Operating voltage: 250 VAC max
 Current rating: 5 Amps max
 Contact resistance: 20 mohms max
 Insulation resistance: 5,000 Mohms min
 Dielectric withstanding voltage: 1,000 VAC for 1 minute
 Temperature Rating: Operating temperature: -65°C to +125°C
 Environmental: Lead free, RoHS compliant
 Recommended soldering temp: 235°C for 5 seconds



ADAM TECH

909 Railway Avenue, Union, NJ 07083
 Phone: 908-687-5000 Fax: 908-687-5710

TITLE: D-SUB SOCKET, STANDARD PROFILE
 .118 [3.00] THRU-HOLE

| | | |
|--|--------------|--------------|
| UNLESS OTHERWISE SPECIFIED ALL DIMENSIONS ARE IN INCHES [MM] TOLERANCES: EXCEPT AS NOTED | INCHES | MM |
| .X | ± .10 | ØXX ± .10 |
| .XX | ± .020 | ØXXX ± .015 |
| .XXX | ± .015 | ØXXXX ± .010 |
| APPROVALS | DATE | |
| DRAWN | DY | 5/11/10 |
| CHECKED | | |
| APPROVED | | |
| SIZE | PART NO. | REV. |
| X | DXXX-ST-1-MC | - |
| REF: | SCALE: NTS | SHEET 1 OF 1 |