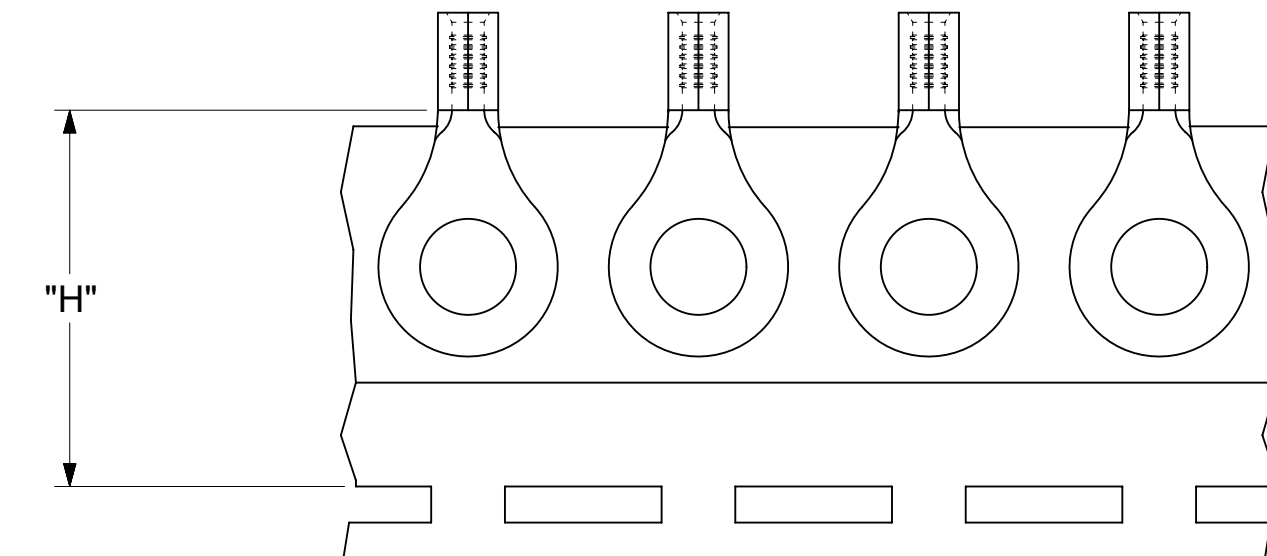
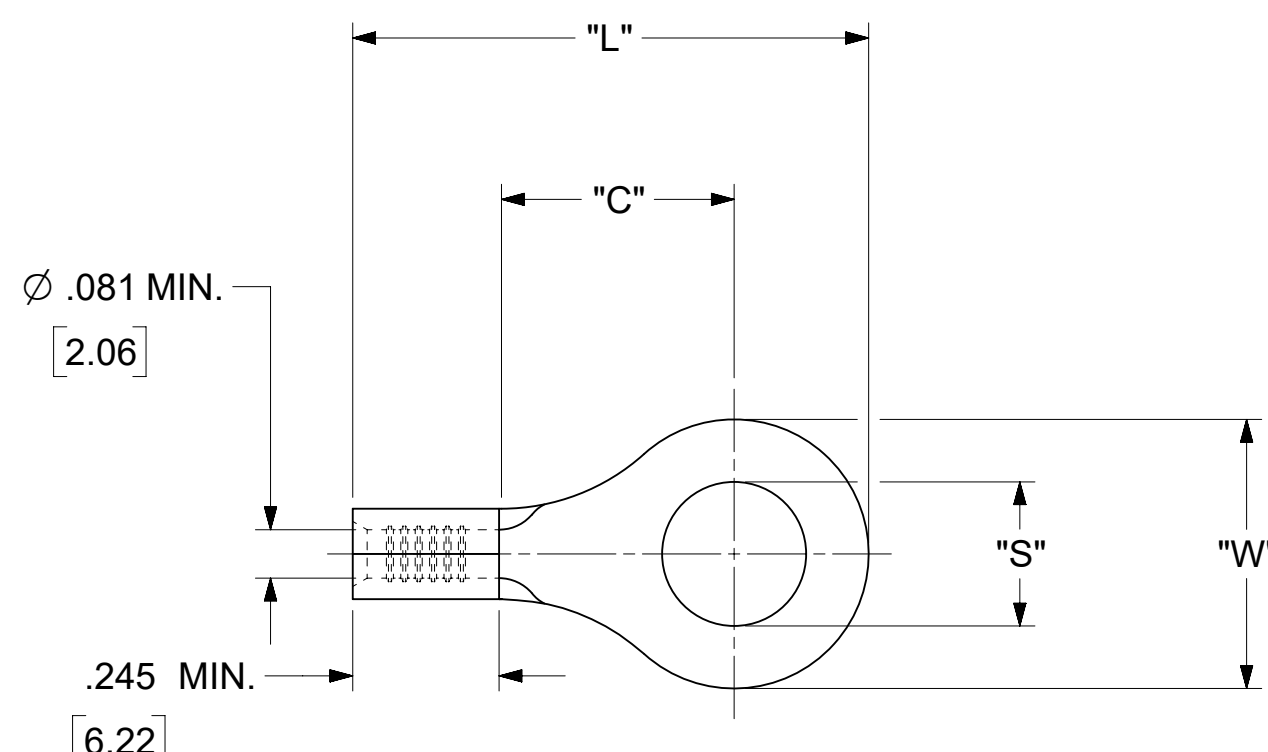


LOOSE PIECE		TAPE MOUNTED		SPECIFICATIONS					
MATERIAL NUMBER	ENGINEERING NUMBER	MATERIAL NUMBER	ENGINEERING NUMBER	STUD SIZE	"S" ±.005 [0.13]	"W" ±.010 [0.25]	"C" MIN.	"L" MAX.	"H"
190440143	B-118-10	---	---	10	.198 [5.03]	.534 [13.56]	.554 [14.07]	1.115 [28.32]	1.172 [29.77]
190440144	B-118-14	---	---	14	.265 [6.73]				
190440146	B-118-38	---	---	38	.390[9.91]				
190440148	B-118-56	---	---	56	.328 [8.33]				
190440150	B-123-04	---	---	4	.119 [3.02]	.250 [6.35]	.209 [5.31]	.639 [16.23]	.98 [24.89]
190440152	B-123-06	---	---	6	.146 [3.71]				
190440154	B-123-08	190440155	B-123-08T	8	.173 [4.39]				
190440156	B-125-10	---	---	10	.198 [5.03]	.467 [11.86]	.388 [9.86]	.916 [23.27]	.98 [24.89]
190440158	B-125-14	190440159	B-125-14T	14	.265 [6.73]				
190440160	B-125-56	---	---	56	.328 [8.33]				
190440028	B-137-04	---	---	4	.119 [3.02]	.312 [7.92]	.285 [7.24]	.730 [18.54]	.98 [24.89]
190440030	B-137-06	---	---	6	.146 [3.71]				
190440031	B-137-08	190440176	B-137-08T	6	.173 [4.39]				
190440032	B-137-10	190440177	B-137-10T	10	.198 [5.03]				
190440033	B-139-04	---	---	4	.119 [3.02]	.342 [8.69]	.310 [7.87]	.775 [19.69]	.98 [24.89]
190440035	B-139-06	---	---	6	.146 [3.71]				
190440037	B-139-08	---	---	8	.173 [4.39]				
190440039	B-139-10	---	---	10	.198 [5.03]				



PARTS ON TAPE

- NOTES:
1. MATERIAL: COPPER .031±.001 [0.79] THK.
 2. PLATING: ELECTRO-TIN (.0003 MIN).
 3. WIRE SIZE: 16-14 AWG
1.0-2.5 MM²
 4. ALL DIMENSIONS IN INCHES/[MM].
 5. PARTS ARE ROHS COMPLIANT.
 6. DIMS. SHOWN ARE FOR REFERENCE ONLY.

THIS DRAWING CONTAINS INFORMATION THAT IS PROPRIETARY TO MOLEX ELECTRONIC TECHNOLOGIES, LLC AND SHOULD NOT BE USED WITHOUT WRITTEN PERMISSION									
DIMENSION UNITS INCH/MM		SCALE NTS		CURRENT REV DESC: OBSOLETE PART NUMBERS AS PER PCN#512131.				molex	
GENERAL TOLERANCES (UNLESS SPECIFIED)				EC NO: 727779		RING TONGUE TERMINAL KRIMPTITE 100-SERIES			
4 PLACES	±	MM	±	INCH	±	DRWN: ANIKES1	2022/09/29	PRODUCT CUSTOMER DRAWING	
3 PLACES	±	0.13	±	0.01	±	CHK'D: GGA	2022/11/29	DOCUMENT NUMBER	
2 PLACES	±	0.25	±		±	APPR: GGA	2022/11/29	DOC TYPE DOC PART REVISION	
1 PLACE	±		±			INITIAL REVISION:		190440143	
0 PLACES	±		±			DRWN: JJ	1984/10/15	PSD 000 A2	
ANGULAR TOL ± 0.5 °		THIRD ANGLE PROJECTION		DRAWING		SERIES		MATERIAL NUMBER CUSTOMER SHEET NUMBER	
DRAFT WHERE APPLICABLE MUST REMAIN WITHIN DIMENSIONS		C-SIZE		19044		SEE TABLE GENERAL MARKET		1 OF 1	

DOCUMENT STATUS	P1	RELEASE DATE	2022/11/29 12:44:58
-----------------	----	--------------	---------------------