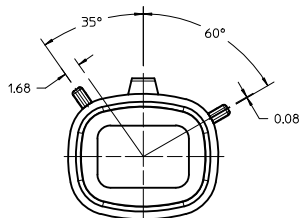
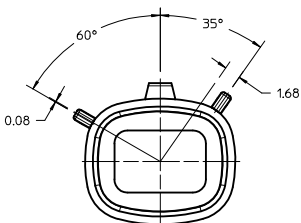


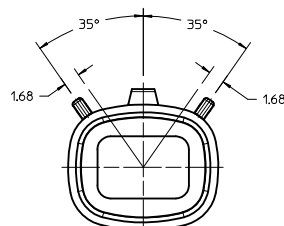
KEYING OPTION "A"
SUGGESTED COLOR: BLACK



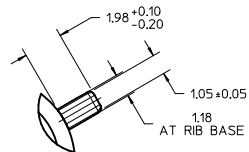
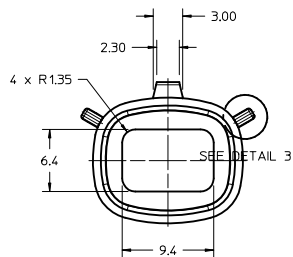
KEYING OPTION "B"
SUGGESTED COLOR: GREY



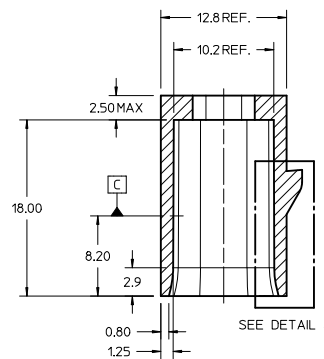
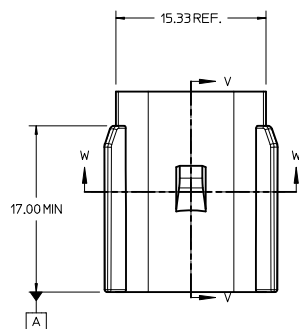
KEYING OPTION "C"
SUGGESTED COLOR: BROWN



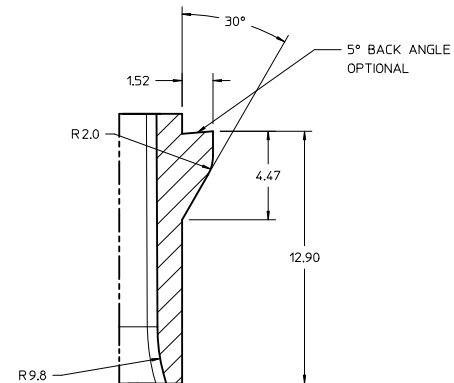
KEYING OPTION "D"
SUGGESTED COLOR: GREEN



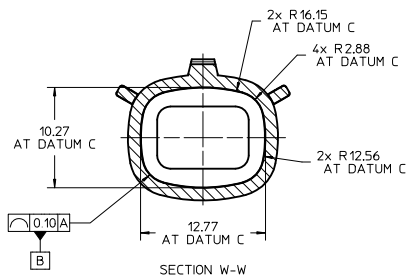
DETAIL 3
SCALE 8:1



SECTION V-V



DETAIL 4
SCALE 8:1



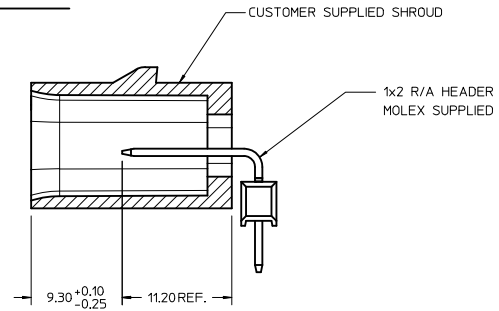
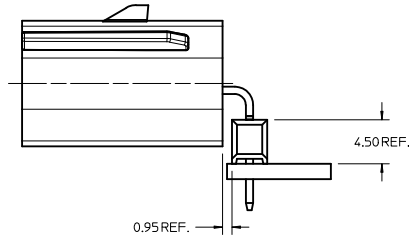
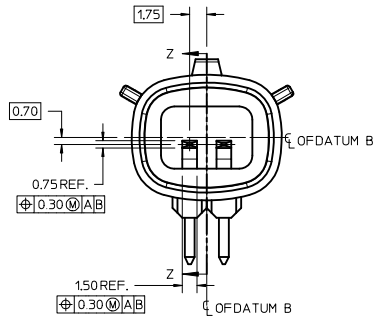
SECTION W-W

NOTES:

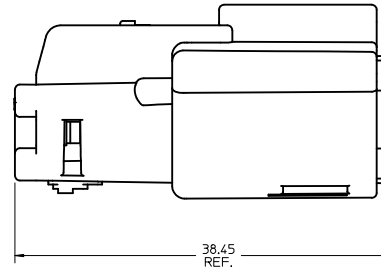
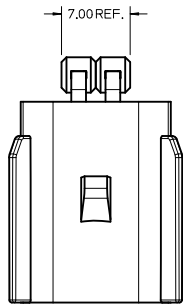
- REFER TO MOLEX SALES DRAWING SD-75900-002 FOR THE HEADER ASSEMBLY PRODUCT DETAILS AND RECOMMENDED PCB LAYOUT.
- KEYING OPTIONS A-D AND SUGGESTED COLORS COMPLY TO THE POLARIZATION STANDARDS ESTABLISHED FOR MATING WITH A MX150 FEMALE CONNECTOR.
- INTERIOR SHROUD SURFACE MUST BE FREE OF DEFECTS AND PARTING LINES ALL AROUND TO ENSURE PROPER SEALING OF THE MATING MX150 FEMALE CONNECTOR.
- A FULL SHROUD ON THE MATING CONNECTOR IS REQUIRED TO INSURE THE HEADER SHROUD POLARIZATION FEATURES (OPTIONS A-D) WILL FUNCTION PROPERLY. THE FULL SHROUD ALSO PREVENTS SCOOP DAMAGE TO THE HEADER CONTACTS.
- PERMISSIBLE DRAFT ANGLE 0.25° MAXIMUM.
- RADI ON ALL CORNERS SHOWN SHARP OR ALL UNSPECIFIED RADI 0.25 EXCEPT AS NOTED.
- DIMENSIONS SHOWN ABOUT A CENTERLINE ARE SYMMETRICAL ABOUT THAT CENTERLINE WITHIN HALF THE SPECIFIED TOLERANCE.

INITIAL RELEASE EC NO: UCF2011-3372 DRAWN BY: DROSCA CHYD: JCOMERCI APPR: JCOMERCI 2011/05/04 2011/06/17 2011/06/17	QUALITY SYMBOLS ▽=0 ▽=0	GENERAL TOLERANCES (UNLESS SPECIFIED)		DIMENSION STYLE MM ONLY	SCALE 4:1	DESIGN UNITS METRIC	<input checked="" type="checkbox"/> THIRD ANGLE PROJECTION		
		4 PLACES ± --- ± --- 3 PLACES ± --- ± --- 2 PLACES ± 0.13 ± --- 1 PLACE ± 0.25 ± ---	mm INCH	DRAWN BY: DROSCA DATE: 2011/05/04	CHECKED BY: DATE	APPLICATION SPEC 1X2 MX150 R/A HEADER SHROUD DETAIL			
		ANGULAR ±1/2°	DRAFT WHERE APPLICABLE MUST REMAIN WITHIN DIMENSIONS	APPROVED BY: JCOMERCI DATE: 2011/06/17	MATERIAL NO: 759001020	DOCUMENT NO: AS-75900-102	MOLEX INCORPORATED	SHEET NO. 1 OF 2	
		THIS DRAWING CONTAINS INFORMATION THAT IS PROPRIETARY TO MOLEX INCORPORATED AND SHOULD NOT BE USED WITHOUT WRITTEN PERMISSION							

HEADER APPLICATION DETAILS



SECTION Z-Z

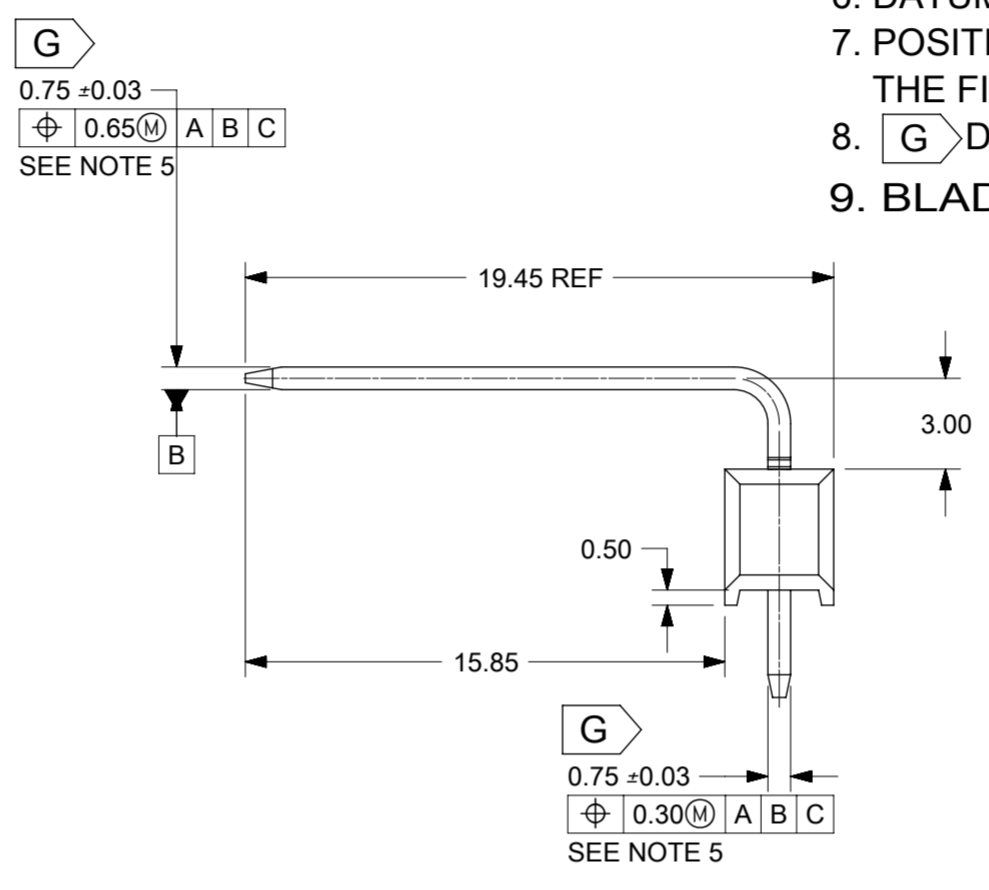
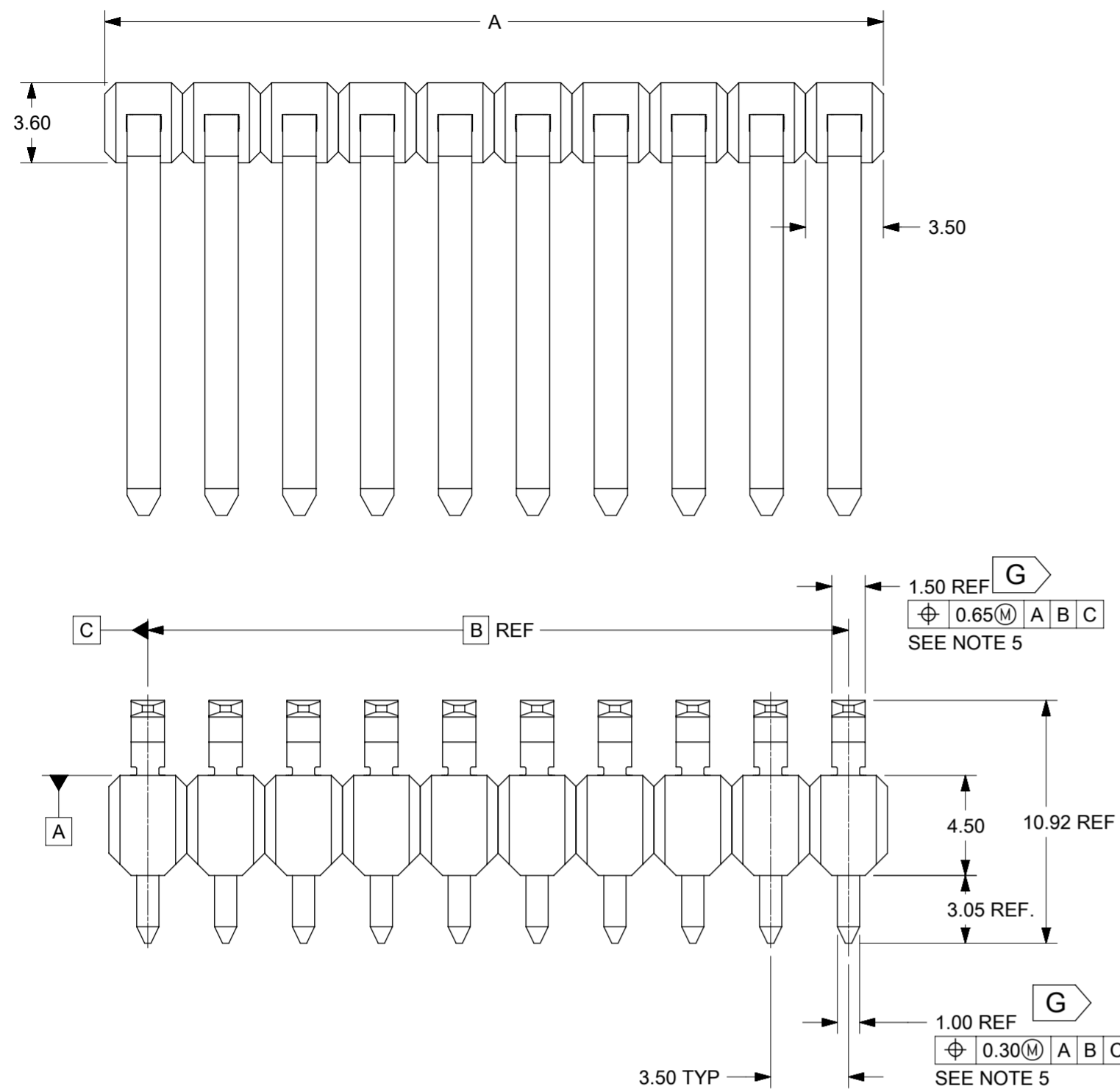


CONNECTOR ASSEMBLY

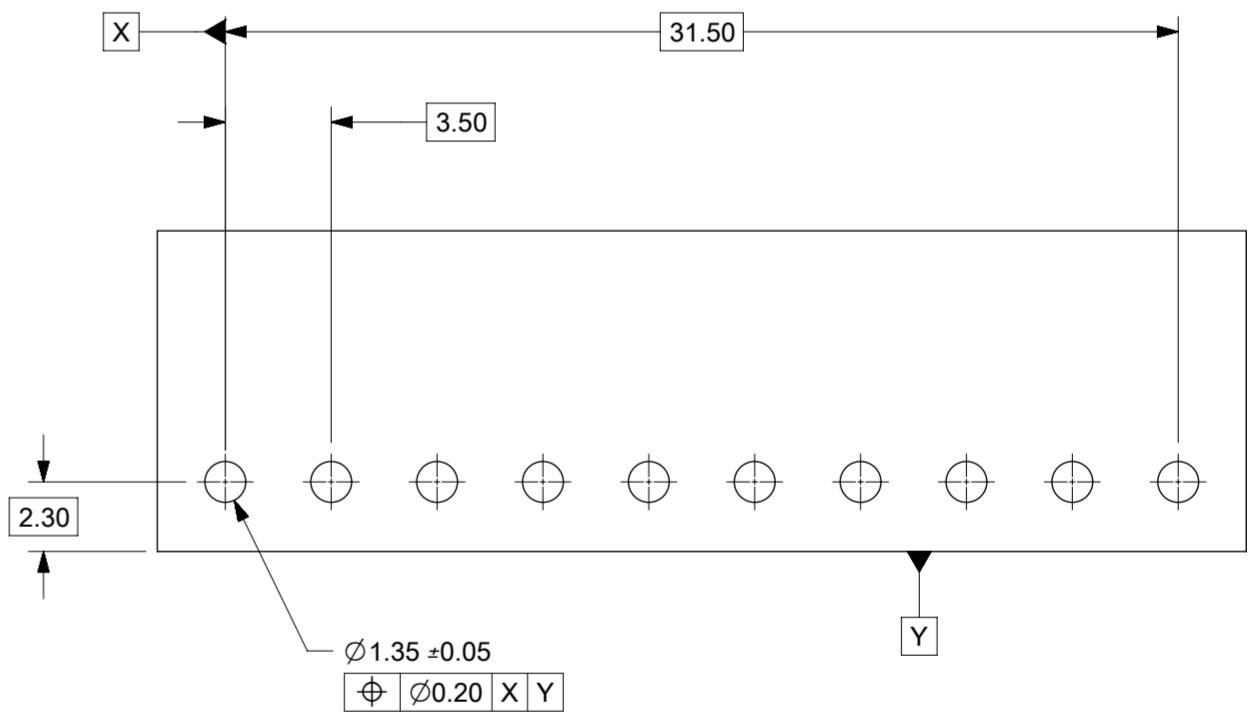
NOTES:

1. ADHERENCE TO THE HEADER APPLICATION DETAILS IS IMPERATIVE TO ENSURE PROPER SHROUD SEALING AND CONTACT ALIGNMENT WHEN MATED WITH A MX150 FEMALE CONNECTOR.

SEE SHT 1 IEC NO.: UCP2011-3372 DRAWN BY: DROSICA 2011/05/04 CHECKED BY: JCOMERCI 2011/06/17 APPR.: JCOMERCI 2011/06/17	QUALITY SYMBOLS ▽=0 ▽=0	GENERAL TOLERANCES (UNLESS SPECIFIED)		DIMENSION STYLE MM ONLY	SCALE 4:1	DESIGN UNITS METRIC	THIRD ANGLE PROJECTION	
		4 PLACES ± --- INCH	3 PLACES ± --- INCH	2 PLACES ± 0.13	1 PLACE ± 0.25	DRAWN BY: DROSICA DATE: 2011/05/04	TITLE APPLICATION SPEC 1X2 MX150 R/A HEADER SHROUD DETAIL	
		ANGULAR ±1/2°		DRAFT WHERE APPLICABLE MUST REMAIN WITHIN DIMENSIONS		APPROVED BY: JCOMERCI DATE: 2011/06/17	MATERIAL NO. [Molex] MOLEX INCORPORATED	
		SEE SHEET 1		DOCUMENT NO. AS-75900-102		SHEET NO. 2 OF 2		THIS DRAWING CONTAINS INFORMATION THAT IS PROPRIETARY TO MOLEX INCORPORATED AND SHOULD NOT BE USED WITHOUT WRITTEN PERMISSION



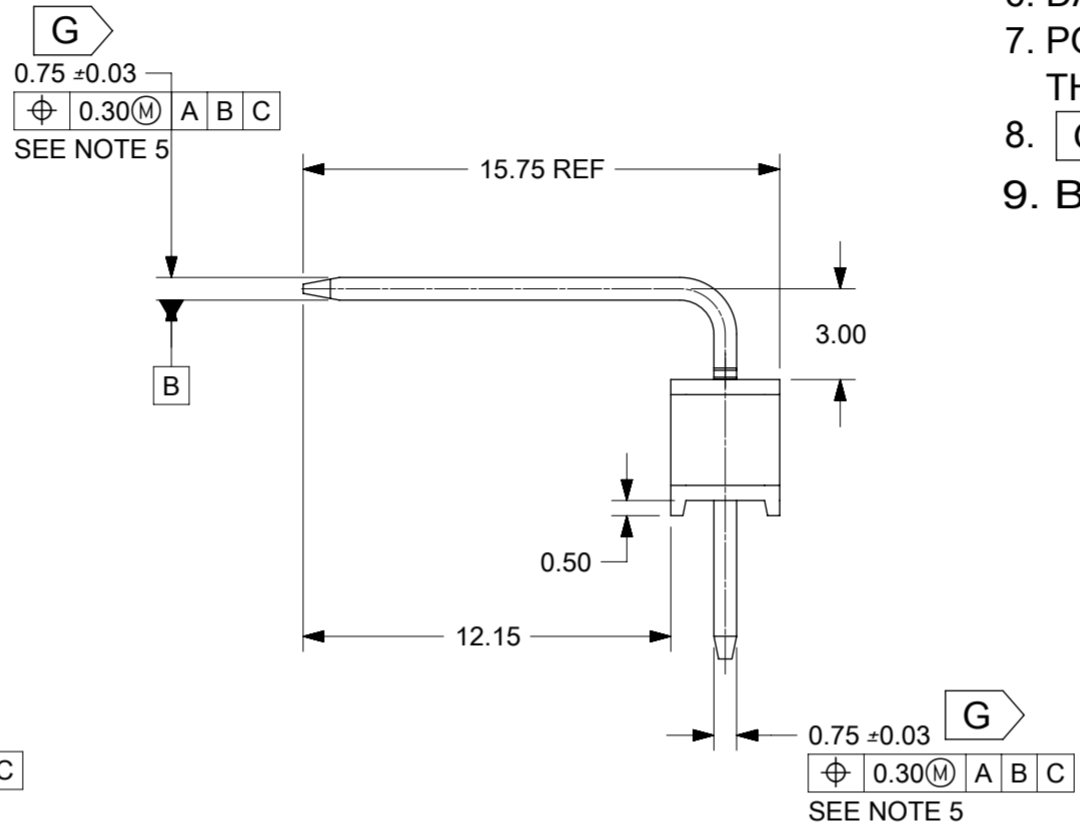
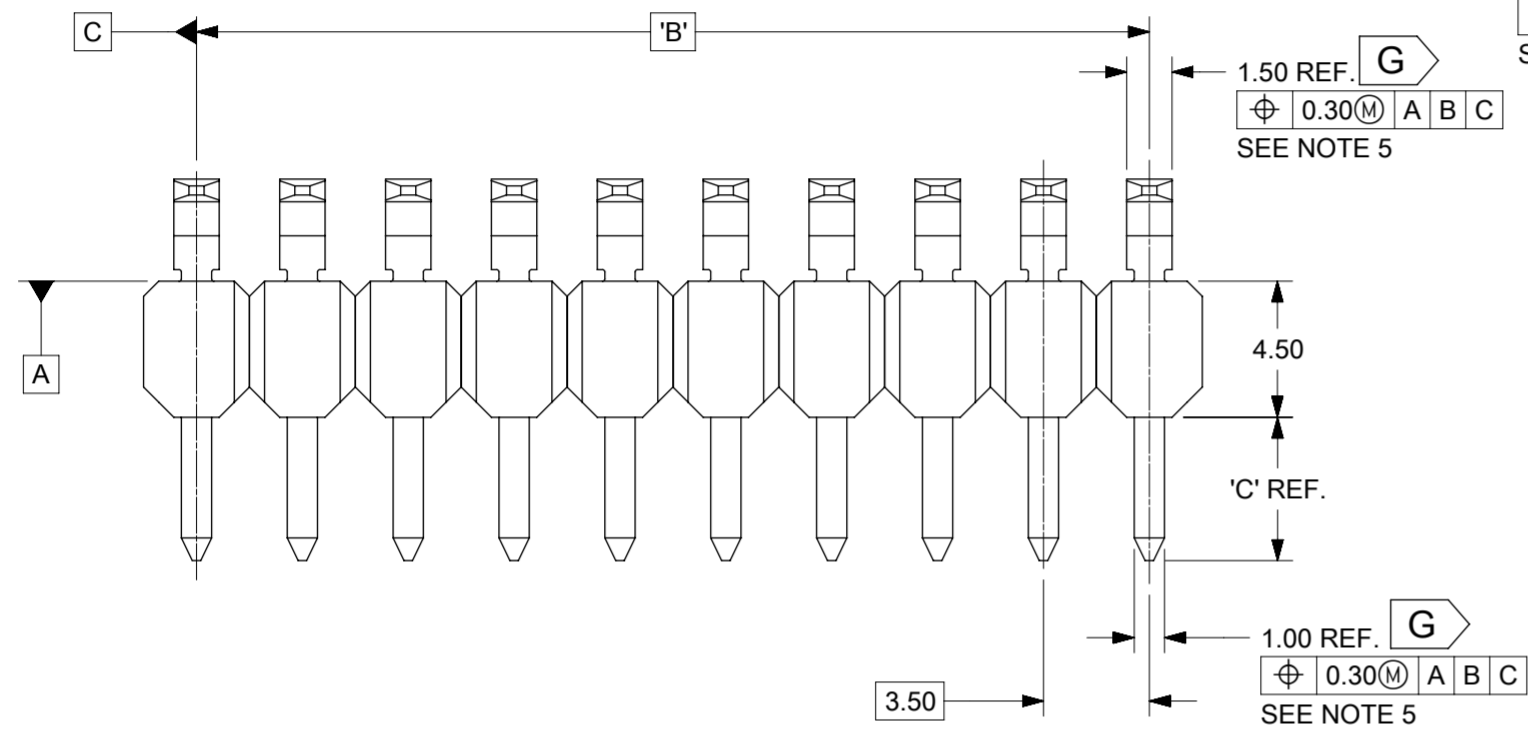
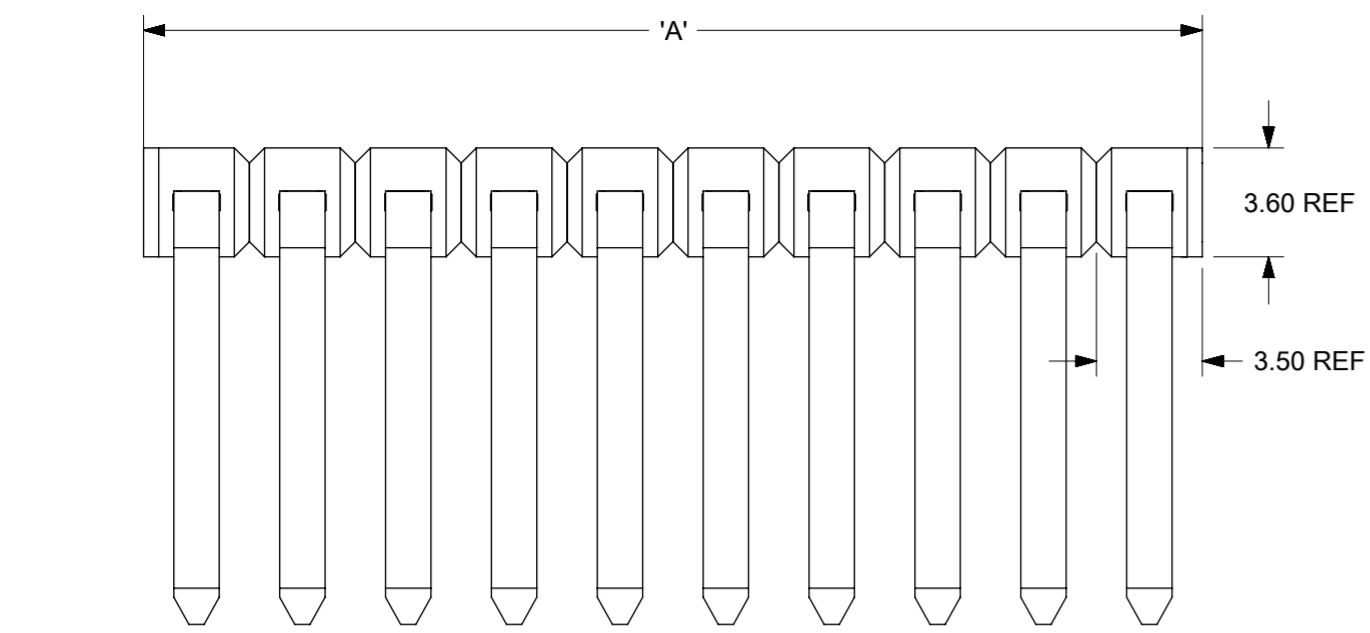
- NOTES:
1. TERMINAL MAT'L: ALLOY C26000, CARTRIDGE BRASS
 2. WAFER MAT'L: 30% GLASS FILLED LCP, 94V-0, COLOR BLACK.
 3. TERMINAL PLATING:
 - OPTION 4 - 1.5µm MIN MATTE TIN OVERALL OVER 1.25µm NICKEL OVERALL
 - OPTION 1 - 2.5µm MIN MATTE TIN OVERALL OVER 1.25µm NICKEL OVERALL
 - OPTION 2 - 1.25µm NICKEL OVERALL 2.5µm MIN SELECT MATTE TIN PC TAIL AREA 0.05-0.25µm SELECT GOLD CONTACT AREA
 - OPTION 3 - 1.25µm NICKEL OVERALL 2.5µm MIN SELECT MATTE TIN PC TAIL AREA 0.75µm SELECT GOLD CONTACT AREA
 4. HEADER ASSEMBLIES ARE TUBE PACKAGED PER PK-36518-352.
 5. ALL THE POSITIONAL TOLERANCES SHOULD BE MEASURED AT TIP OF THE TERMINALS.
 6. DATUM SHOULD BE CONSIDERED FROM THE EDGES OF THE HOUSING.
 7. POSITION TOLERANCES OF THE PIN AT MATING SIDE SHOULD BE MAINTAINED AT 0.3 MM IN THE FINAL MODULE BY CUSTOMER.
 8. [G] DENOTES DIMENSIONS THAT CAN BE QUALIFIED WITH A GAUGE.
 9. BLADE GEOMETRY DOES NOT CONFORM TO USCAR SPECIFICATIONS.



RECOMMENDED PCB LAYOUT

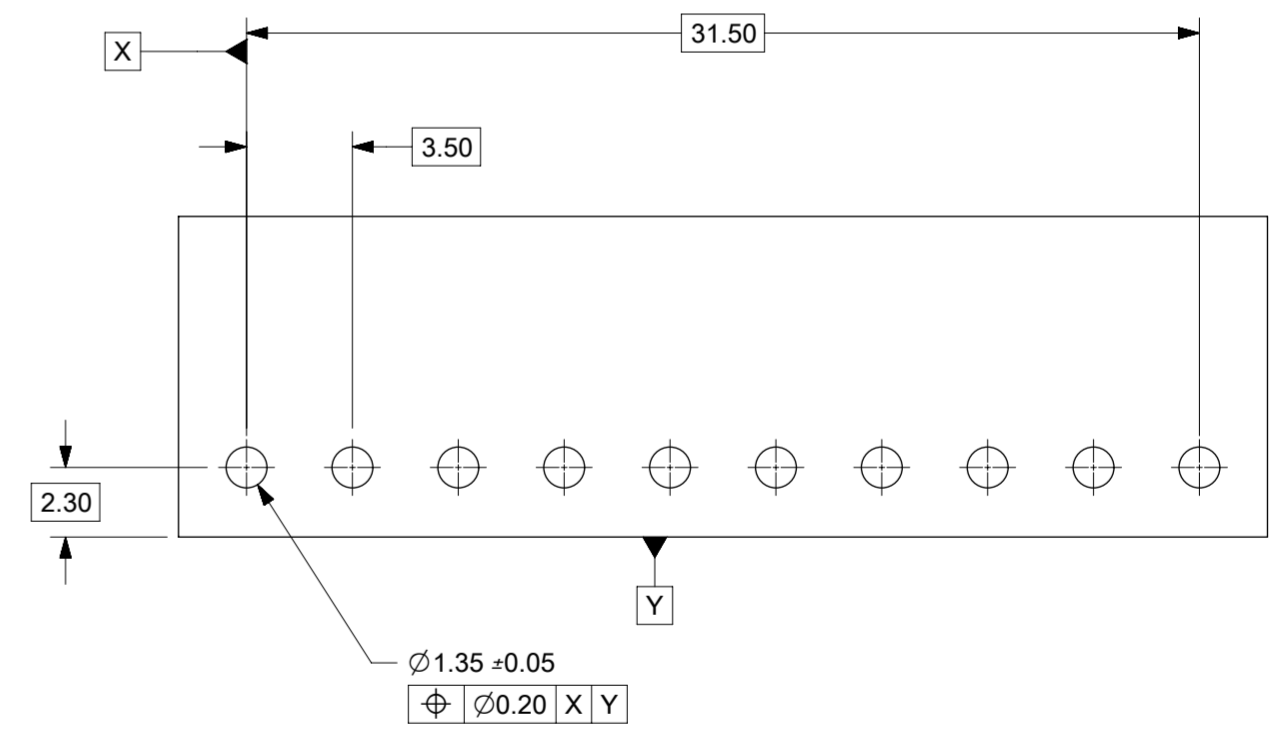
1 x 2	1	75900-3121	7.0	3.50 REF
	2	75900-3221		
	3	75900-3321		
	4	75900-3421		
1 x 3	1	75900-3131	10.5	7.00
	2	75900-3231		
	3	75900-3331		
	4	75900-3431		
1 x 4	1	75900-3141	14.0	10.50
	2	75900-3241		
	3	75900-3341		
	4	75900-3441		
1 x 6	1	75900-3161	21.0	17.50
	2	75900-3261		
	3	75900-3361		
	4	75900-3461		
1 x 8	1	75900-3181	28.0	24.50
	2	75900-3281		
	3	75900-3381		
	4	75900-3481		
1 x 10	1	75900-3101	35.0	31.50
	2	75900-3201		
	3	75900-3301		
	4	75900-3401		
CKT SIZE	PLATING OPTION	MATERIAL NUMBER	"A" DIM	"B" DIM

THIS DRAWING CONTAINS INFORMATION THAT IS PROPRIETARY TO MOLEX ELECTRONIC TECHNOLOGIES, LLC AND SHOULD NOT BE USED WITHOUT WRITTEN PERMISSION									
EC NO: 119089 DRWN: RGV CHKD: DPOMPI REV / APPR: DPOMPI	GENERAL TOLERANCES (UNLESS SPECIFIED)		DIMENSION UNITS	SCALE					
	ANGULAR TOL ± 0.5 °		mm	4:1					
	4 PLACES ±	DRWN BY		DATE					
	3 PLACES ±	DROSCA		2011/08/31					
2 PLACES ± 0.13	CHK'D BY		DATE	MX150 RIGHT ANGLE SINGLE ROW UNSHROUDED HEADER ASSY					
1 PLACE ± 0.25	JCOMERCI		0009/01/11						
0 PLACES ±	APPR BY		DATE						
DRAFT WHERE APPLICABLE MUST REMAIN WITHIN DIMENSIONS		JCOMERCI							2011/11/21
DRAWING SIZE		THIRD ANGLE PROJECTION		PRODUCT CUSTOMER DRAWING		SERIES	MATERIAL NUMBER	CUSTOMER	
A2				75900		SEE CHART		GENERAL MARKET	
C1				DOCUMENT NUMBER		SD-75900-0001		DOC TYPE	DOC PART SHEET NUMBER
				PSD		001		1 OF 1	



- NOTES:
1. TERMINAL MAT'L: ALLOY C26000, CARTRIDGE BRASS
 2. WAFER MAT'L: 30% GLASS FILLED LCP, 94V-0, COLOR BLACK.
 3. TERMINAL PLATING:
 - OPTION 4 - 1.5µm MIN MATTE TIN OVERALL OVER 1.25µm NICKEL OVERALL
 - OPTION 1 - 2.5µm MIN MATTE TIN OVERALL OVER 1.25µm NICKEL OVERALL
 - OPTION 2 - 1.25µm NICKEL OVERALL 2.5µm MIN SELECT MATTE TIN PC TAIL AREA 0.05-0.25µm SELECT GOLD CONTACT AREA
 - OPTION 3 - 1.25µm NICKEL OVERALL 2.5µm MIN SELECT MATTE TIN PC TAIL AREA 0.75µm SELECT GOLD CONTACT AREA
 4. HEADER ASSEMBLIES ARE TUBE PACKAGED PER PK-36518-352.
 5. ALL THE POSITIONAL TOLERANCES SHOULD BE MEASURED AT TIP OF THE TERMINALS.
 6. DATUM SHOULD BE CONSIDERED FROM THE EDGES OF THE HOUSING.
 7. POSITION TOLERANCES OF THE PIN AT MATING SIDE SHOULD BE MAINTAINED AT 0.3 MM IN THE FINAL MODULE BY CUSTOMER.
 8. [G] DENOTES DIMENSIONS THAT CAN BE QUALIFIED WITH A GAUGE.
 9. BLADE GEOMETRY DOES NOT CONFORM TO USCAR SPECIFICATIONS.

D	1 x 2	1	75900-0121	7.0	3.50 REF	3.05	75900-0122	7.0	3.50 REF	
		2	75900-0221				75900-0222			
		3	75900-0321				75900-0322			
		4	75900-0421				75900-0422			
C	1 x 3	1	75900-0131	10.5	7.00	3.05	75900-0132	10.5	7.00	
		2	75900-0231				75900-0232			
		3	75900-0331				75900-0332			
		4	75900-0431				75900-0432			
B	1 x 4	1	75900-0141	14.0	10.50	3.05	75900-0142	14.0	10.50	
		2	75900-0241				75900-0242			
		3	75900-0341				75900-0342			
		4	75900-0441				75900-0442			
A	1 x 6	1	75900-0161	21.0	17.50	3.05	75900-0162	21.0	17.50	
		2	75900-0261				75900-0262			
		3	75900-0361				75900-0362			
		4	75900-0461				75900-0462			
A	1 x 8	1	75900-0181	28.0	24.50	3.05	75900-0182	28.0	24.50	
		2	75900-0281				75900-0282			
		3	75900-0381				75900-0382			
		4	75900-0481				75900-0482			
A	1 x 10	1	75900-0101	35.0	31.50	3.05	75900-0102	35.0	31.50	
		2	75900-0201				75900-0202			
		3	75900-0301				75900-0302			
		4	75900-0401				75900-0402			
CKT SIZE		PLATING OPTION	MATERIAL NUMBER	"A" DIM	"B" DIM	"C" DIM	MATERIAL NUMBER	"A" DIM	"B" DIM	"C" DIM



QUALITY SYMBOLS	THIS DRAWING CONTAINS INFORMATION THAT IS PROPRIETARY TO MOLEX ELECTRONIC TECHNOLOGIES, LLC AND SHOULD NOT BE USED WITHOUT WRITTEN PERMISSION									
▽ = 0	EC NO: 119089 DRWN: RGV CHKD: DPOMPI APPR: DPOMPI REV: C3	2018/02/15 2018/03/15 2018/03/15	GENERAL TOLERANCES (UNLESS SPECIFIED)		DIMENSION UNITS		SCALE			
▽ = 0			ANGULAR TOL ± 0.5 °		mm		1:1			
▽ = 0			4 PLACES ±		DRAWN BY		DATE			
▽ = 0			3 PLACES ±		DROSCA		2010/10/12			
▽ = 0			2 PLACES ± 0.13		CHK'D BY		DATE			
▽ = 0			1 PLACE ± 0.25		JCOMERCI		2011/05/02			
▽ = 0	0 PLACES ±		APPR BY		DATE					
▽ = 0	DRAFT WHERE APPLICABLE MUST REMAIN WITHIN DIMENSIONS		JCOMERCI		2011/06/17		PRODUCT CUSTOMER DRAWING			
▽ = 0	A2		DRAWING SIZE		THIRD ANGLE PROJECTION		SERIES		MATERIAL NUMBER	
▽ = 0	C3		A2		THIRD ANGLE PROJECTION		75900		SEE CHART	
▽ = 0	C3		A2		THIRD ANGLE PROJECTION		DOCUMENT NUMBER		CUSTOMER	
▽ = 0	C3		A2		THIRD ANGLE PROJECTION		SD-75900-002		GENERAL MARKET	
▽ = 0	C3		A2		THIRD ANGLE PROJECTION		DOC TYPE		SHEET NUMBER	
▽ = 0	C3		A2		THIRD ANGLE PROJECTION		PSD		001 1 OF 1	