

Han K4/4-M 10-22mm²

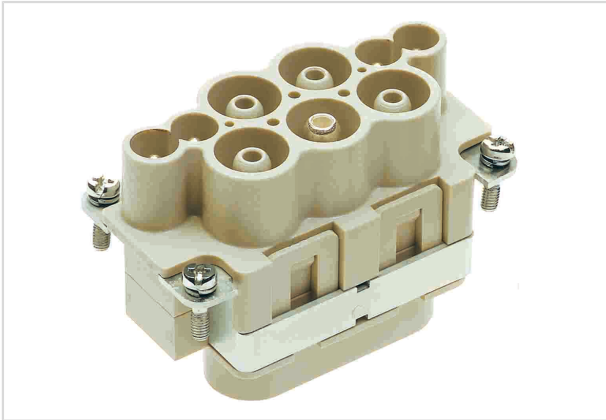


Image is for illustration purposes only. Please refer to product description.

| | |
|--------------------|---------------------------------------------------------------------------------------|
| Part number | 09 38 008 2612 |
| Specification | Han K4/4-M 10-22mm ² |
| HARTING eCatalogue | https://b2b.harting.com/09380082612 |

Identification

| | |
|----------------|------------------------|
| Category | Inserts |
| Series | Han-Com [®] |
| Identification | Han [®] K 4/4 |

Version

| | |
|--------------------|--------------------------------------------------|
| Termination method | Axial screw termination / cage-clamp termination |
| Gender | Male |
| Size | 10 B |
| Number of contacts | 4 |
| further contacts | + 4 additional signal contacts |
| PE contact | Yes |
| Details | Not finger safe |

Technical characteristics

| | |
|-------------------------|------------------------------------------------------------------|
| Conductor cross-section | 10 ... 22 mm ² 0.14 ... 2.5 mm ² Signal |
| Wire outer diameter | ≤8.9 mm ≤11 mm @ 22 mm ² |
| Rated current | 63 A |
| Rated voltage | 690 V |
| Rated impulse voltage | 8 kV |
| Pollution degree | 3 |
| Rated current (signal) | 16 A |



Pushing Performance

Technical characteristics

| | |
|------------------------------------|-----------------------------------|
| Rated voltage (signal) | 250 V |
| Rated impulse voltage (signal) | 4 kV |
| Pollution degree (signal) | 3 |
| Rated current acc. to UL | 63 A |
| Rated voltage acc. to UL | 600 V |
| Rated current acc. to UL (signal) | 16 A |
| Rated voltage acc. to UL (signal) | 230 V |
| Rated current acc. to CSA | 63 A |
| Rated voltage acc. to CSA | 600 V |
| Rated current acc. to CSA (signal) | 16 A |
| Rated voltage acc. to CSA (signal) | 230 V |
| Insulation resistance | >10 ¹⁰ Ω |
| Contact resistance | ≤0.5 mΩ |
| Contact resistance, signal area | ≤3 mΩ |
| Stripping length | 11 ... 12 mm |
| | 13 ... 14 mm @ 22 mm ² |
| | 7 ... 9 mm Signal |
| Tightening torque | 3 Nm @ 10 mm ² |
| | 4 Nm @ 16 mm ² |
| | 4 Nm @ 22 mm ² |
| Limiting temperature | -40 ... +125 °C |
| Mating cycles | ≥500 |

Material properties

| | |
|-------------------------------------------|---------------------------------------------------------------------------------------------------------------------------------------------------------------------------------------------------------------------------------------------------------------------------------------------------------------------------------------|
| Material (insert) | Polycarbonate (PC) |
| Colour (insert) | RAL 7032 (pebble grey) |
| Material (contacts) | Copper alloy |
| Surface (contacts) | Silver plated |
| Material flammability class acc. to UL 94 | V-0 |
| RoHS | compliant with exemption |
| RoHS exemptions | 6(a) / 6(a)-I: Lead as an alloying element in steel for machining purposes and in galvanised steel containing up to 0,35 % lead by weight / Lead as an alloying element in steel for machining purposes containing up to 0,35 % lead by weight and in batch hot dip galvanised steel components containing up to 0,2 % lead by weight |
| | 6(c): Copper alloy containing up to 4 % lead by weight |
| ELV status | compliant with exemption |



Pushing Performance

Material properties

| | |
|--------------------------------------|-------------------------------------------------------------------|
| China RoHS | 50 |
| REACH Annex XVII substances | No |
| REACH ANNEX XIV substances | No |
| REACH SVHC substances | Yes |
| REACH SVHC substances | Lead Potassium 1,1,2,2,3,3,4,4,4-nonafluorobutane-1-sulphonate |
| ECHA SCIP number | 1e38d35d-d1be-4585-8e03-95faccd739bf |
| California Proposition 65 substances | Yes |
| California Proposition 65 substances | Nickel Lead |

Specifications and approvals

| | |
|----------------|------------------------------------------------------------|
| Specifications | EN 60664-1 IEC 61984 |
| Approvals | DNV GL |
| UL / CSA | UL 1977 ECBT2.E235076 CSA-C22.2 No. 182.3 ECBT8.E235076 |

Commercial data

| | |
|--------------------------------|---------------------------------------------------|
| Packaging size | 1 |
| Net weight | 122.4 g |
| Country of origin | Germany |
| European customs tariff number | 85366990 |
| eCl@ss | 27440205 Contact insert for industrial connectors |