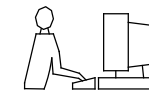


TOLERANCES UNLESS OTHERWISE SPECIFIED	
.X	±0.25
.XX	±0.15
.XXX	±0.10

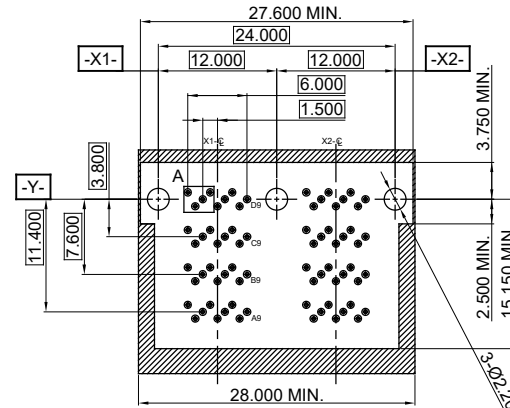
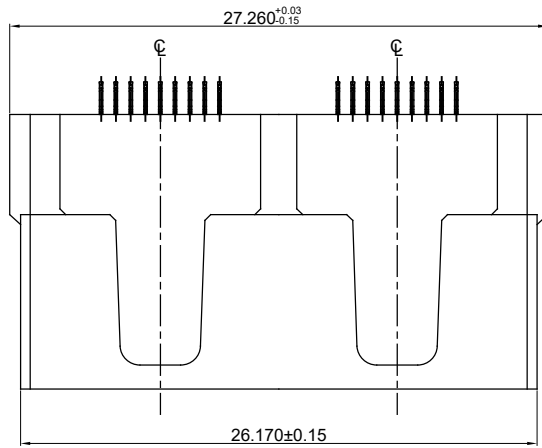
THIS IS A C.A.D. GENERATED DRAWING  
DO NOT MAKE MANUAL REVISIONS TO MASTER.



ISSUE NUMBER

ORIGINAL

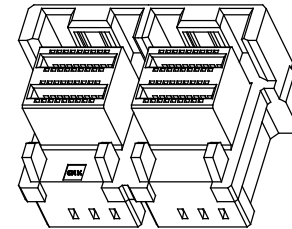
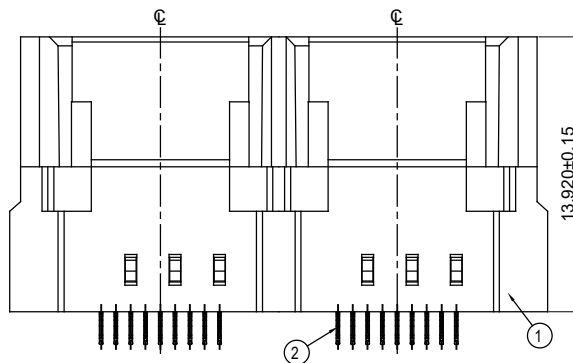
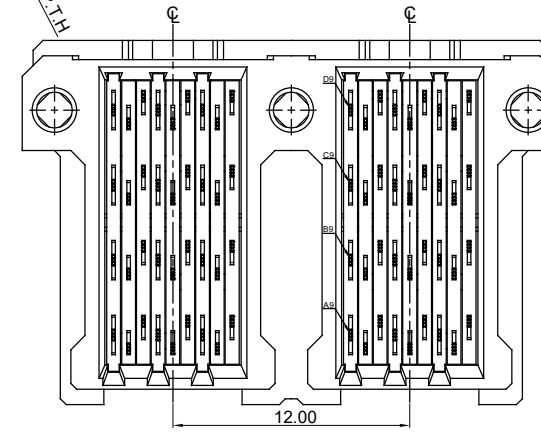
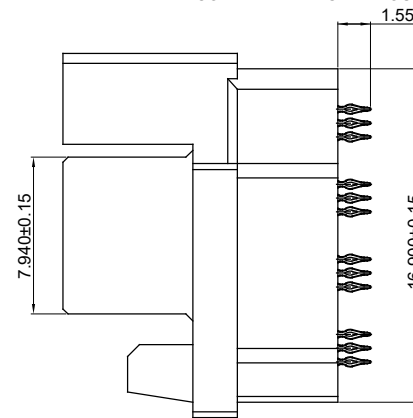
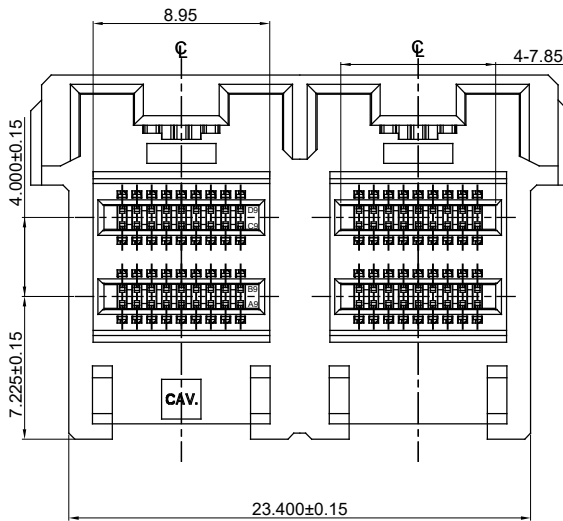
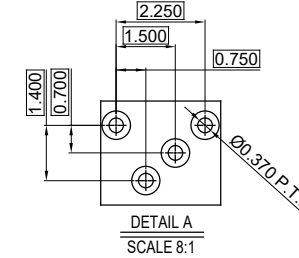
1



NOTES:

MATERIAL:  
HOUSING:  
CONTACT:

L.C.P GLASS REINFORCED, UL-94V-0  
COPPER ALLOY  
30 μ" GOLD PLATING ON CONTACT AREA  
MATTE TIN PLATING 20-120μ" ON SOLDER TAIL OVER  
NICKEL 50-150μ" UNDER PLATING.



NO.	DESCRIPTION	QTY.	MATERIAL	FINISH/COLOR
2	CONTACT	72	COPPER ALLOY	SEE NOTES
1	INSULATOR	1	L.C.P SERIES, UL94 V-0	-

### MINI SAS HD EXTERNAL, VERTICAL PRESS FIT, 72 CONTACTS, FEMALE

ACAD REFERENCE NO.: 903-072-231-002

DRAWN: W.T DATE: JULY.03 /2018

CHECKED: DATE:

SCALE: N.T.S SHEET 1 OF 1

DRAWING NUMBER: 903-072-231-002

ISSUE

PART NUMBER: 903-072-231-002

1



THIS SERIES FULLY CONFORMS TO  
THE EUROPEAN UNION DIRECTIVES  
2011/65/EU FOR RoHS COMPLIANCE.



YOUR CONNECTION TO QUALITY & SERVICE

EDAC INC  
TORONTO, ONTARIO  
CANADA

THESE DRAWINGS AND SPECIFICATIONS  
ARE THE PROPERTY OF EDAC INC., AND  
SHALL NOT BE REPRODUCED, OR COPIED  
OR USED AS THE BASIS FOR THE  
MANUFACTURE OR SALE OF APPARATUS  
WITHOUT WRITTEN PERMISSION.