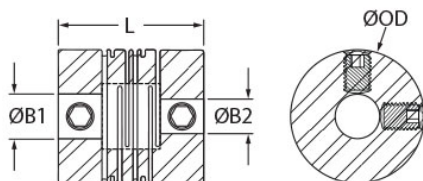




MRLS8-4-4-A

Ruland MRLS8-4-4-A, 4mm x 4mm Long Slit Coupling, Aluminum, Set Screw Style, 8.0mm OD, 14.5mm length



Description

Ruland MRLS8-4-4-A is a set screw style slit coupling with 4mm x 4mm bores, 8.0mm OD, and 14.5mm length. It is manufactured from a single piece of material and has two sets of intermittent slit cuts allowing for a maintenance-free coupling with high torsional stiffness in relation to comparable couplings, such as beam type. MRLS8-4-4-A has small dimensions and is designed to mate with micro motors, ball screws, and lead screws in high precision medical and scientific equipment. This long style slit coupling has added torque and misalignment capabilities compared to the short style. MRLS8-4-4-A is zero-backlash, has a balanced design for reduced vibration at speeds up to 24,000 RPM, and can accommodate all forms of misalignment with light bearing loads. It is manufactured by Reliance Precision Ltd. in their County Cork, Ireland factory from 7075 aluminum for lightweight and low inertia. MRLS8-4-4-A is inventoried by Ruland and RoHS3 and REACH compliant.

Product Specifications

Bore (B1)	4 mm	Small Bore (B2)	4 mm
B1 Max Shaft Penetration	5.2 mm	B2 Max Shaft Penetration	5.2 mm
Outer Diameter (OD)	8 mm	Bore Tolerance	+0.010 mm / -0.000 mm
Length (L)	14.5 mm	Forged Set Screw	M1.6
Screw Material	18-8 300 Series Stainless Steel	Hex Wrench Size	0.7 mm
Screw Finish	Bright	Number of Screws	4
Dynamic Torque Reversing	0.20 Nm	Angular Misalignment	2.0°
Dynamic Torque Non-Reversing	0.30 Nm	Parallel Misalignment	0.10 mm
Peak Torque	0.50 Nm	Axial Motion	0.10 mm
Torsional Stiffness	0.2 Nm/Deg	Moment of Inertia	0.00004676 lb-in ²
Maximum Speed	24,000 RPM	Full Bearing Support Required?	Yes
Zero-Backlash?	Yes	Balanced Design	Yes
Material Specification	7075-T651 Extruded and Drawn Aluminum Bar	Temperature	-110°F to 175°F (-80°C to 80°C)
Finish Specification	SurTec 650	Manufacturer	Reliance Precision Limited
Country of Origin	Ireland	Weight (lbs)	0.003000
UPC	634529296462	Tariff Code	8483.60.8000
UNSPC	31163003		
Note 1	Performance ratings are for guidance only. The user must determine suitability for a particular application.		

Prop 65

⚠ WARNING This product can expose you to the chemical Nickel (metallic), known to the State of California to cause cancer. For more information go to www.P65Warnings.ca.gov.