

NOTES:

- THIS LIGHT PIPE ASSEMBLY TO BE USED WITH THE FOLLOWING 1X5 SFP CAGE ASSEMBLIES:

747230001 - 1X5 SFP CAGE ASSEMBLY W/ PRESS FIT PINS (REFER TO DOCUMENT SD-74723-001)
- IT IS RECOMMENDED THAT THE CAGE ASSEMBLY BE PRESSED INTO THE PCB PRIOR TO ASSEMBLING THE LIGHT PIPE ASSEMBLY.
- LED'S TO HAVE A MAXIMUM HEIGHT OF 1.4mm AND A MINIMUM HEIGHT OF 0.7mm.
- RECOMMENDED LED'S INCLUDE THE FOLLOWING MANUFACTURERS:

DIALIGHT: 597-77x1-5xx SERIES

CHICAGO MINIATURE: 7016 SERIES

KINGBRIGHT: APBL3025 SERIES (BICOLOR)
APL3015 SERIES (SINGLE COLOR)

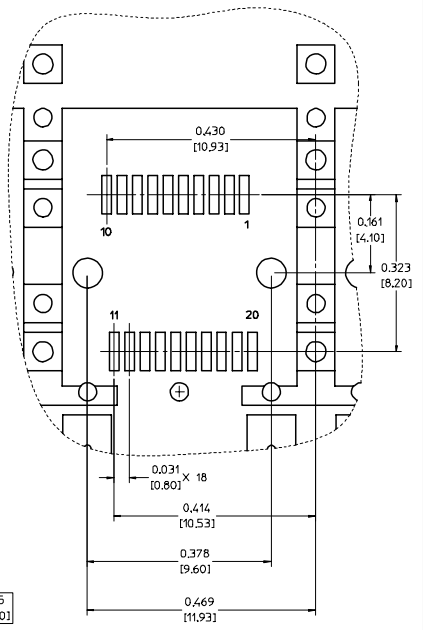
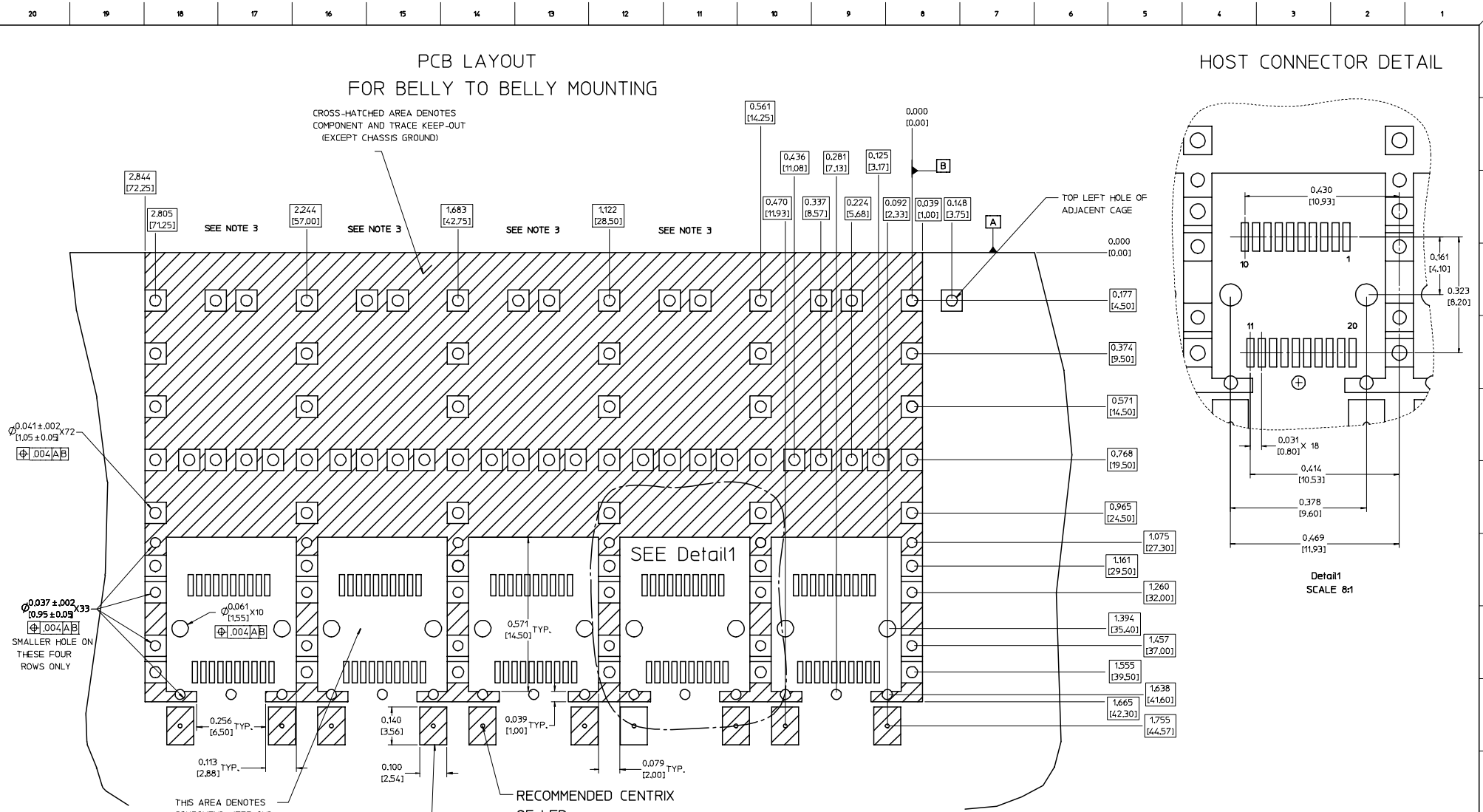
5. THIS PART MEETS THE RESTRICTION OF HAZARDOUS SUBSTANCES IN ELECTRICAL AND ELECTRONIC EQUIPMENT (ROHS) DIRECTIVE (2002/95/EC).

ENTER DESCRIPTION EC NO: UST2006-0008 DORWANKS MONSON 2005/07/15 CHFKBRUSSELL 2005/07/15 APPR:BRUSSELL 2005/07/25	QUALITY SYMBOLS	GENERAL TOLERANCES (UNLESS SPECIFIED)		DIMENSION STYLE		SCALE	DESIGN UNITS	THIRD ANGLE PROJECTION
	▽=0	mm	INCH	IN/MM		4:1	METRIC	
	▽=0	4 PLACES ± --- ± ---	3 PLACES ± --- ± .005	DRAWN BY	DATE	TITLE		
		2 PLACES ± 0.13 ± .01	1 PLACE ± 0.25 ± ---	CHECKED BY	DATE	1X5 SFP LIGHT PIPE ASSEMBLY, BACK-TOP		
	ANGULAR ± 1 °			APPROVED BY	DATE	MOLEX INCORPORATED		
		DRAFT WHERE APPLICABLE MUST REMAIN WITHIN DIMENSIONS		MATERIAL NO: 747290001		DOCUMENT NO: SD-74729-001		SHEET NO: 1 OF 5
				SIZE D		THIS DRAWING CONTAINS INFORMATION THAT IS PROPRIETARY TO MOLEX INCORPORATED AND SHOULD NOT BE USED WITHOUT WRITTEN PERMISSION		

PCB LAYOUT FOR BELLY TO BELLY MOUNTING

CROSS-HATCHED AREA DENOTES
COMPONENT AND TRACE KEEP-OUT
(EXCEPT CHASSIS GROUND)

HOST CONNECTOR DETAIL



Detail1
SCALE 8:1

$\phi 0.041 \pm 0.002$
 $[1.05 \pm 0.05]$
 $\phi 0.037 \pm 0.002$
 $[0.95 \pm 0.05]$
SMALLER HOLE ON
THESE FOUR
ROWS ONLY

THIS AREA DENOTES
COMPONENT KEEP-OUT
(TRACES ALLOWED)

AREA OF LIGHT
PIPE COVERAGE

RECOMMENDED CENTRIX
OF LED

- NOTES:
1. PADS AND VIAS GO TO CHASSIS GROUND.
 2. CAGE MOUNTING THRU HOLES (84 PLACES) TO BE PLATED.
 3. HOLE PATTERN REPEATS FOR EACH PORT, SPACING BETWEEN PORTS IS .561 [14.25].

ENTER DESCRIPTION EC NO: US72006-0008 DRINKS MONSON 2005/07/15 CHK:BRUSSELL 2005/07/15 APPR:BRUSSELL 2005/07/25 REV DESCRIPTION	QUALITY SYMBOLS $\nabla=0$ $\nabla=0$	GENERAL TOLERANCES (UNLESS SPECIFIED) <table border="1"> <tr> <th></th> <th>mm</th> <th>INCH</th> </tr> <tr> <td>4 PLACES ±</td> <td>± .10</td> <td>± .005</td> </tr> <tr> <td>3 PLACES ±</td> <td>± .05</td> <td>± .002</td> </tr> <tr> <td>2 PLACES ±</td> <td>± 0.13</td> <td>± .01</td> </tr> <tr> <td>1 PLACE ±</td> <td>± 0.25</td> <td>± .01</td> </tr> <tr> <td colspan="3">ANGULAR ± 1°</td> </tr> </table>		mm	INCH	4 PLACES ±	± .10	± .005	3 PLACES ±	± .05	± .002	2 PLACES ±	± 0.13	± .01	1 PLACE ±	± 0.25	± .01	ANGULAR ± 1°			DIMENSION STYLE IN/MM	SCALE 6:1	DESIGN UNITS METRIC	THIRD ANGLE PROJECTION
		mm	INCH																					
	4 PLACES ±	± .10	± .005																					
	3 PLACES ±	± .05	± .002																					
2 PLACES ±	± 0.13	± .01																						
1 PLACE ±	± 0.25	± .01																						
ANGULAR ± 1°																								
DRAWN BY KS IMONSO		DATE 2004/07/08		TITLE 1X5 SFP LIGHT PIPE ASSEMBLY, BACK-TOP																				
CHECKED BY BRUSSELL		DATE 2004/07/08		MOLEX INCORPORATED																				
APPROVED BY BRUSSELL		DATE 2004/07/08		MATERIAL NO: 747290001	DOCUMENT NO: SD-74729-001	SHEET NO: 2 OF 5																		

DRAFT WHERE APPLICABLE
MUST REMAIN
WITHIN DIMENSIONS

THIS DRAWING CONTAINS INFORMATION THAT IS PROPRIETARY TO MOLEX INCORPORATED AND SHOULD NOT BE USED WITHOUT WRITTEN PERMISSION

PCB LAYOUT FOR SINGLE SIDE MOUNTING

CROSS-HATCHED AREA DENOTES
COMPONENT AND TRACE KEEP-OUT
(EXCEPT CHASSIS GROUND)

THIS AREA DENOTES
COMPONENT KEEP-OUT
(TRACES ALLOWED)

SMALLER HOLE ON
THESE FOUR ROWS ONLY

NOTES:

1. PADS AND VIAS GO TO CHASSIS GROUND.
2. CAGE MOUNTING THRU HOLES (42 PLACES) TO BE PLATED.
3. HOLE PATTERN REPEATS FOR EACH PORT.
SPACING BETWEEN PORTS IS .561 (14.25).

2.844
[72.25]

2.805
[71.25]

SEE NOTE 3

2.244
[57.00]

SEE NOTE 3

1.683
[42.75]

SEE NOTE 3

1.122
[28.50]

SEE NOTE 3

0.470
[11.93]

0.338
[8.58]

0.224
[5.68]

0.000
[0.00]

0.092
[2.33]

0.039
[1.00]

0.348
[8.75]

0.000
[0.00]

0.177
[4.50]

0.374
[9.50]

0.571
[14.50]

0.768
[19.50]

0.965
[24.50]

1.075
[27.30]

1.161
[29.50]

1.260
[32.00]

1.394
[35.40]

1.457
[37.00]

1.555
[39.50]

1.638
[41.60]

1.665
[42.30]

0.256 TYP.
[6.50]

.113 TYP.
[2.88]

0.039 TYP.
[1.00]

0.079 TYP.
[2.00]

0.100 TYP.
[2.54]

0.140 TYP.
[3.56]

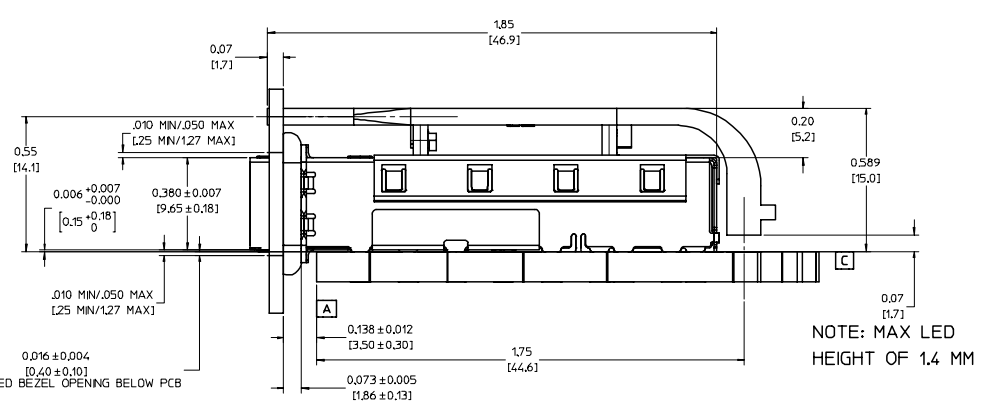
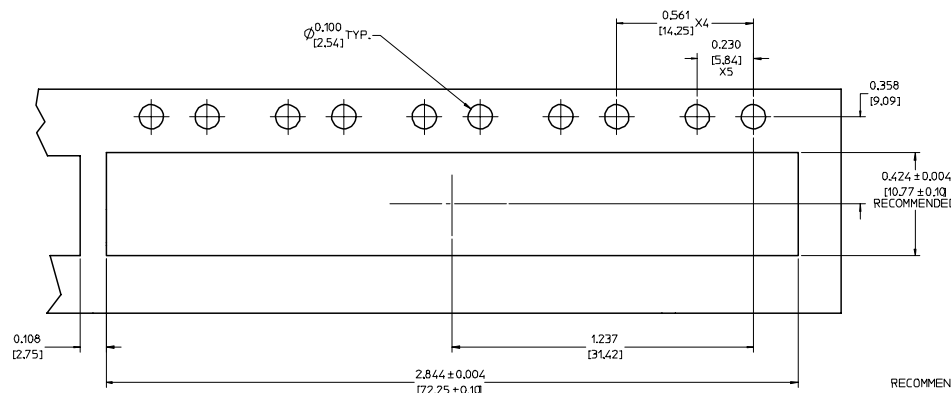
RECOMMENDED CENTRIX
OF LED

AREA OF LIGHT
PIPE COVERAGE

NOTES:

1. PADS AND VIAS GO TO CHASSIS GROUND.
2. CAGE MOUNTING THRU HOLES (42 PLACES) TO BE PLATED.
3. HOLE PATTERN REPEATS FOR EACH PORT.
SPACING BETWEEN PORTS IS .561 (14.25).

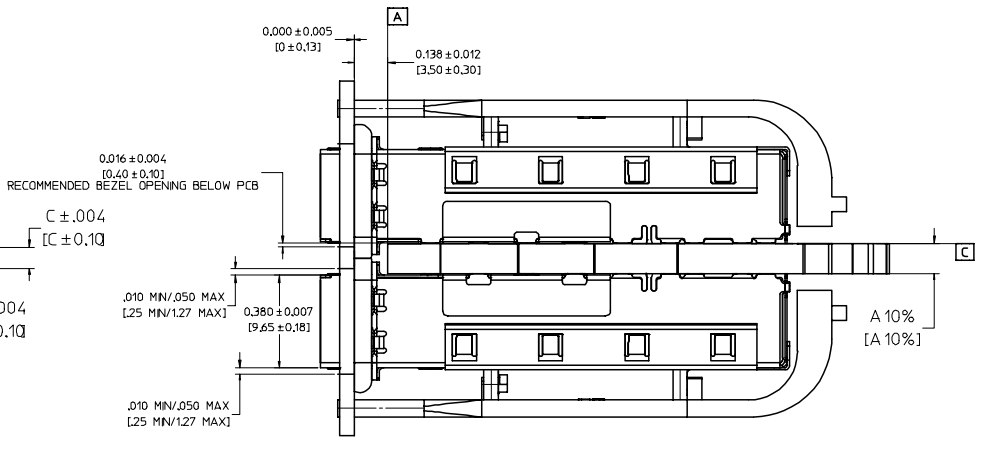
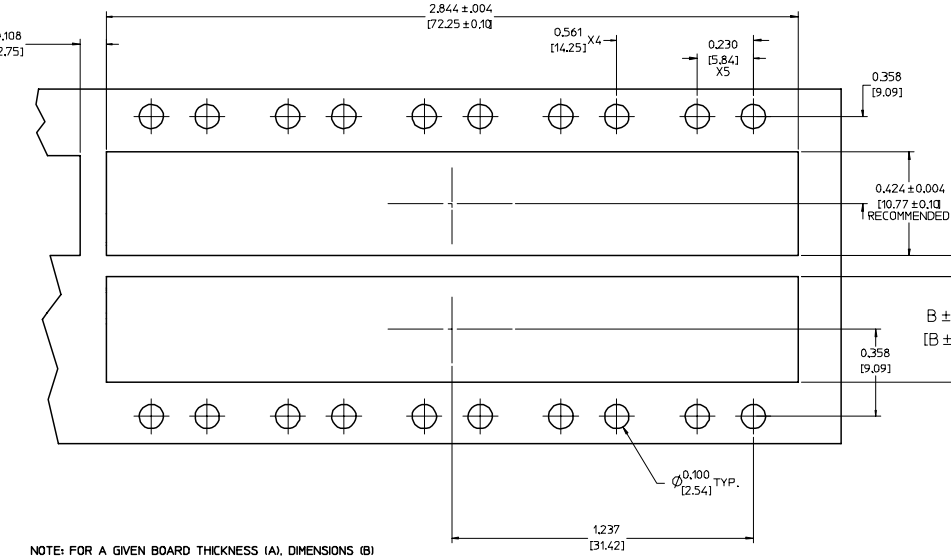
ENTER DESCRIPTION EC NO: UST2006-0008 DRINKINS/ROBINSON 2005/07/15 CH/KC/BRUSSELL 2005/07/15 APPR:BRUSSELL 2005/07/25	QUALITY SYMBOLS	GENERAL TOLERANCES (UNLESS SPECIFIED)	DIMENSION STYLE	SCALE	DESIGN UNITS	THIRD ANGLE PROJECTION
	▽=0 ▽=0	mm ± .13 INCH ± .005 2 PLACES ± 0.13 ± .01 1 PLACE ± 0.25 ± .01 ANGULAR ± 1°	IN/MM DATE 2004/07/08	6:1	METRIC	
	DRAWN BY: KS IMONSO CHECKED BY: BRUSSELL APPROVED BY: BRUSSELL	DATE: 2004/07/08 DATE: 2004/07/08 DATE: 2004/07/08	TITLE: 1X5 SFP LIGHT PIPE ASSEMBLY, BACK-TOP MOLEX INCORPORATED			
	DRAFT WHERE APPLICABLE MUST REMAIN WITHIN DIMENSIONS	MATERIAL NO: 747290001 DOCUMENT NO: SD-74729-001	SHEET NO: 3 OF 5			



NOTE: MAX LED HEIGHT OF 1.4 MM

BEZEL AND BOARD POSITION DIMENSIONS FOR SINGLE SIDE MOUNTING

BEZEL AND BOARD POSITION DIMENSIONS FOR BELLY TO BELLY MOUNTING



NOTE: FOR A GIVEN BOARD THICKNESS (A), DIMENSIONS (B) AND (C) ARE DIRECTLY AFFECTED.

USE RECOMMENDED DIMENSIONS AND TOLERANCES TO AID IN DEVELOPING BEZEL OPENING.

FOR EXAMPLE USING A BOARD THICKNESS OF .125" THE RECOMMENDED VALUES WOULD BE:

- A= .125/3.18 ± 10%
- B= .434/11.03 ± .004
- C= .088/2.23 ± .004

ENTER DESCRIPTION EC NO: UST2006-0008 DORWANS MONSON 2005/07/15 CHFKBRUSSELL 2005/07/15 APPR:BRUSSELL 2005/07/25	QUALITY SYMBOLS ▽=0 ▽=0	GENERAL TOLERANCES (UNLESS SPECIFIED)		DIMENSION STYLE IN/MM		SCALE 4:1	DESIGN UNITS METRIC	THIRD ANGLE PROJECTION		
		4 PLACES ± --- ± ---	3 PLACES ± --- ± .005	2 PLACES ± 0.13 ± .01	1 PLACE ± 0.25 ± ---	ANGULAR ± 1 °	DRAWN BY KS IMONSO		DATE 2004/07/08	TITLE 1X5 SFP LIGHT PIPE ASSEMBLY, BACK-TOP
		DRAWN BY KS IMONSO	DATE 2004/07/08	CHECKED BY BRUSSELL	DATE 2004/07/08	APPROVED BY BRUSSELL	DATE 2004/07/08		MATERIAL NO. 747290001	DOCUMENT NO. SD-74729-001
		DRAFT WHERE APPLICABLE MUST REMAIN WITHIN DIMENSIONS		SIZE D	THIS DRAWING CONTAINS INFORMATION THAT IS PROPRIETARY TO MOLEX INCORPORATED AND SHOULD NOT BE USED WITHOUT WRITTEN PERMISSION					

20 19 18 17 16 15 14 13 12 11 10 9 8 7 6 5 4 3 2 1

M

L

K

J

I

H

G

F

E

D

C

B

A

M

L

K

J

I

H

G

F

E

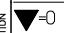
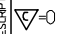


D

C

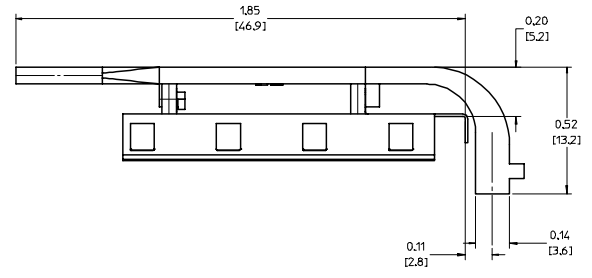
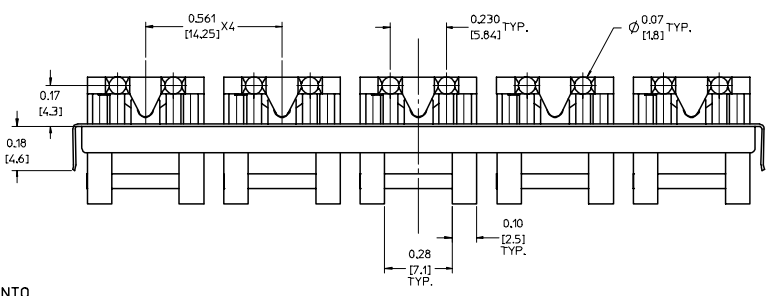
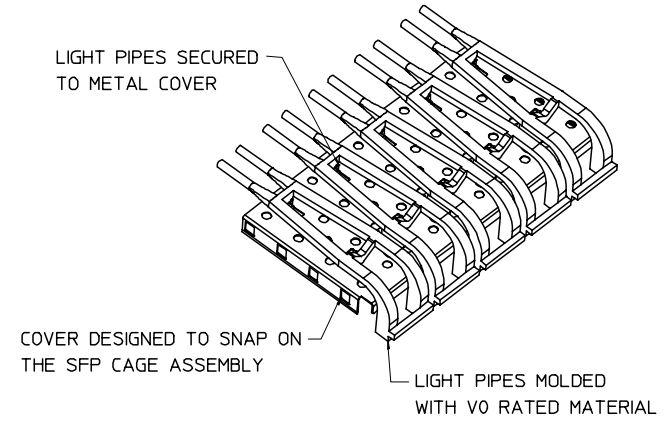
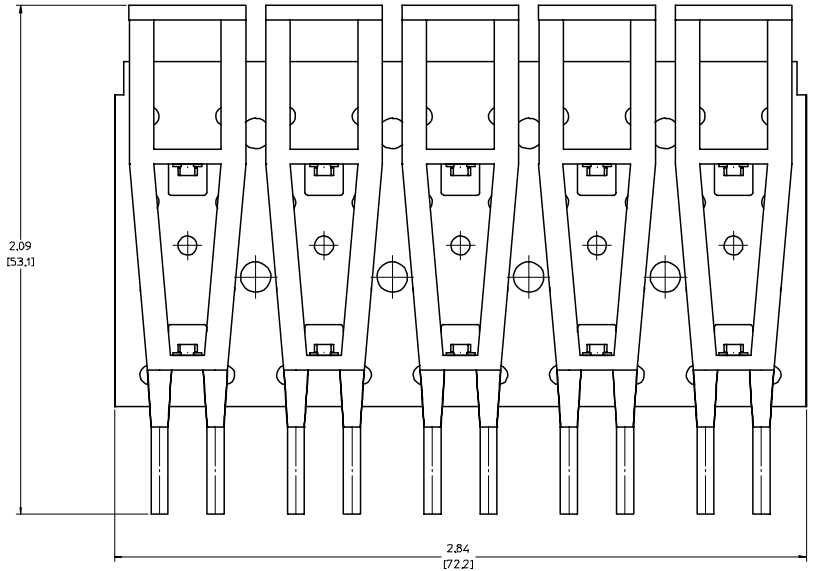
B

A

DATE	REV	CHANGES	COMMENTS
2004/07/08	A	INITIAL RELEASE	N/A
2005/06/03	B	CORRECTED P/N FOR DIALIGHT LED	DOCUMENT CHANGE ONLY
2005/06/10	C	UPDATED VIEWS TO SHOW CLEARANCE HOLES ADDED TO THE COVER	N/A

ENTER DESCRIPTION EC NO: UST2006-0008 DRAWN BY: JORWANKI MONSON 2005/07/15 CHECKED BY: CHUCK BRUSSELL 2005/07/15 APPROVED BY: BRUSSELL 2005/07/25	QUALITY SYMBOLS   	GENERAL TOLERANCES (UNLESS SPECIFIED)		DIMENSION STYLE IN/MM		SCALE 1:1	DESIGN UNITS METRIC	 THIRD ANGLE PROJECTION
		4 PLACES ± --- ± --- 3 PLACES ± --- ± .005 2 PLACES ± 0.13 ± .01 1 PLACE ± 0.25 ± ---	mm INCH	DRAWN BY KS IMONSO	DATE 2004/07/08	TITLE 1X5 SFP LIGHT PIPE ASSEMBLY, BACK-TOP		
		ANGULAR ± 1 °	APPROVED BY BRUSSELL	DATE 2004/07/08	Molex MOLEX INCORPORATED			
		DRAFT WHERE APPLICABLE MUST REMAIN WITHIN DIMENSIONS	MATERIAL NO. 747290001	DOCUMENT NO. SD-74729-001	SHEET NO. 5 OF 5			

19 18 17 16 15 14 13 12 11 10 9 8 7 6 5 4 3 2 1



NOTES:

- THIS LIGHT PIPE ASSEMBLY TO BE USED WITH THE FOLLOWING 1X5 SFP CAGE ASSEMBLIES:

747230001 - 1X5 SFP CAGE ASSEMBLY W/ PRESS FIT PINS (REFER TO DOCUMENT SD-74723-001)
- IT IS RECOMMENDED THAT THE CAGE ASSEMBLY BE PRESSED INTO THE PCB PRIOR TO ASSEMBLING THE LIGHT PIPE ASSEMBLY.
- LED'S TO HAVE A MAXIMUM HEIGHT OF 1.4mm AND A MINIMUM HEIGHT OF 0.7mm.
- RECOMMENDED LED'S INCLUDE THE FOLLOWING MANUFACTURERS:

DIALIGHT: 597-77x1-5xx SERIES

CHICAGO MINIATURE: 7016 SERIES

KINGBRIGHT: APBL3025 SERIES (BICOLOR)
APL3015 SERIES (SINGLE COLOR)

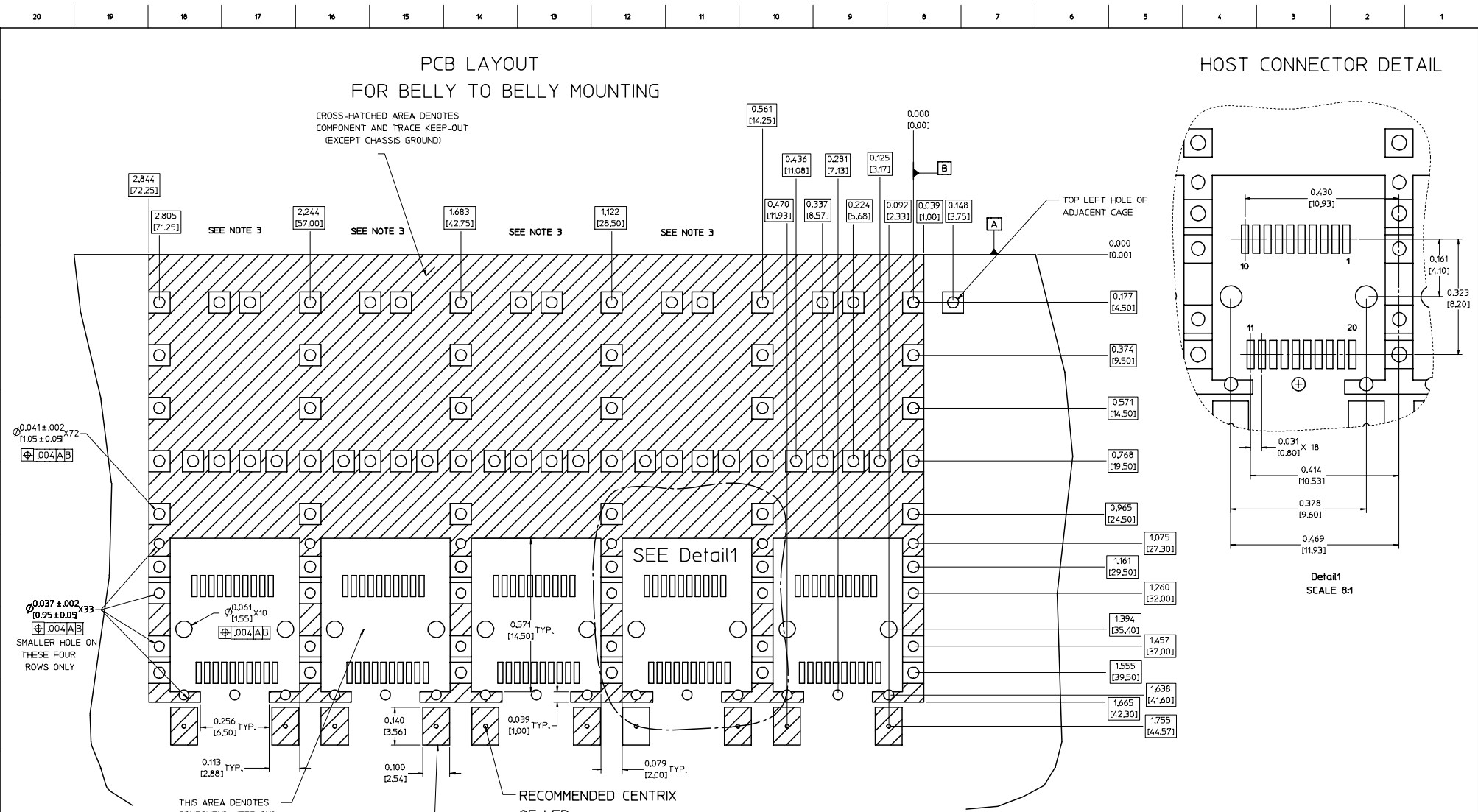
5. THIS PART MEETS THE RESTRICTION OF HAZARDOUS SUBSTANCES IN ELECTRICAL AND ELECTRONIC EQUIPMENT (ROHS) DIRECTIVE (2002/95/EC).

ENTER DESCRIPTION EC NO: UST2006-0008 DRAWN BY: JORWANKS MONSON 2005/07/15 CHECKED BY: CHUCK BRUSSELL 2005/07/15 APPR: BRUSSELL 2005/07/25	QUALITY SYMBOLS	GENERAL TOLERANCES (UNLESS SPECIFIED)		DIMENSION STYLE		SCALE	DESIGN UNITS	THIRD ANGLE PROJECTION
	▽=0	mm	INCH	IN/MM		4:1	METRIC	
	▽=0	4 PLACES ± --- ± ---	3 PLACES ± --- ± .005	DRAWN BY	DATE	TITLE		
		2 PLACES ± 0.13 ± .01	1 PLACE ± 0.25 ± ---	CHECKED BY	DATE	1X5 SFP LIGHT PIPE ASSEMBLY, BACK-TOP		
	ANGULAR ± 1 °			APPROVED BY	DATE	MOLEX INCORPORATED		
		DRAFT WHERE APPLICABLE MUST REMAIN WITHIN DIMENSIONS		MATERIAL NO:	747290001	DOCUMENT NO:	SD-74729-001	SHEET NO: 1 OF 5
		THIS DRAWING CONTAINS INFORMATION THAT IS PROPRIETARY TO MOLEX INCORPORATED AND SHOULD NOT BE USED WITHOUT WRITTEN PERMISSION						

PCB LAYOUT FOR BELLY TO BELLY MOUNTING

CROSS-HATCHED AREA DENOTES
COMPONENT AND TRACE KEEP-OUT
(EXCEPT CHASSIS GROUND)

HOST CONNECTOR DETAIL



NOTES:

1. PADS AND VIAS GO TO CHASSIS GROUND.
2. CAGE MOUNTING THRU HOLES (84 PLACES) TO BE PLATED.
3. HOLE PATTERN REPEATS FOR EACH PORT, SPACING BETWEEN PORTS IS .561 [14.25].

ENTER DESCRIPTION EC NO: US72006-0008 DRANKS MONSON 2005/07/15 CHK:BRUSSELL 2005/07/15 APPR:BRUSSELL 2005/07/25 REV DESCRIPTION	QUALITY SYMBOLS ▽=0 ▽=0	GENERAL TOLERANCES (UNLESS SPECIFIED) <table border="1"> <tr> <th></th> <th>mm</th> <th>INCH</th> </tr> <tr> <td>4 PLACES ±</td> <td>±.005</td> <td>±.001</td> </tr> <tr> <td>3 PLACES ±</td> <td>±.005</td> <td>±.001</td> </tr> <tr> <td>2 PLACES ±</td> <td>±0.13</td> <td>±.01</td> </tr> <tr> <td>1 PLACE ±</td> <td>±0.25</td> <td>±.01</td> </tr> <tr> <td colspan="3">ANGULAR ± 1°</td> </tr> </table>		mm	INCH	4 PLACES ±	±.005	±.001	3 PLACES ±	±.005	±.001	2 PLACES ±	±0.13	±.01	1 PLACE ±	±0.25	±.01	ANGULAR ± 1°			DIMENSION STYLE IN/MM	SCALE 6:1	DESIGN UNITS METRIC	THIRD ANGLE PROJECTION
		mm	INCH																					
	4 PLACES ±	±.005	±.001																					
	3 PLACES ±	±.005	±.001																					
2 PLACES ±	±0.13	±.01																						
1 PLACE ±	±0.25	±.01																						
ANGULAR ± 1°																								
DRAWN BY DATE KS IMONSO 2004/07/08		CHECKED BY DATE BRUSSELL 2004/07/08		APPROVED BY DATE BRUSSELL 2004/07/08		TITLE 1X5 SFP LIGHT PIPE ASSEMBLY, BACK-TOP																		
MATERIAL NO: 747290001		DOCUMENT NO: SD-74729-001		SHEET NO: 2 OF 5																				
DRAFT WHERE APPLICABLE MUST REMAIN WITHIN DIMENSIONS			THIS DRAWING CONTAINS INFORMATION THAT IS PROPRIETARY TO MOLEX INCORPORATED AND SHOULD NOT BE USED WITHOUT WRITTEN PERMISSION																					

PCB LAYOUT FOR SINGLE SIDE MOUNTING

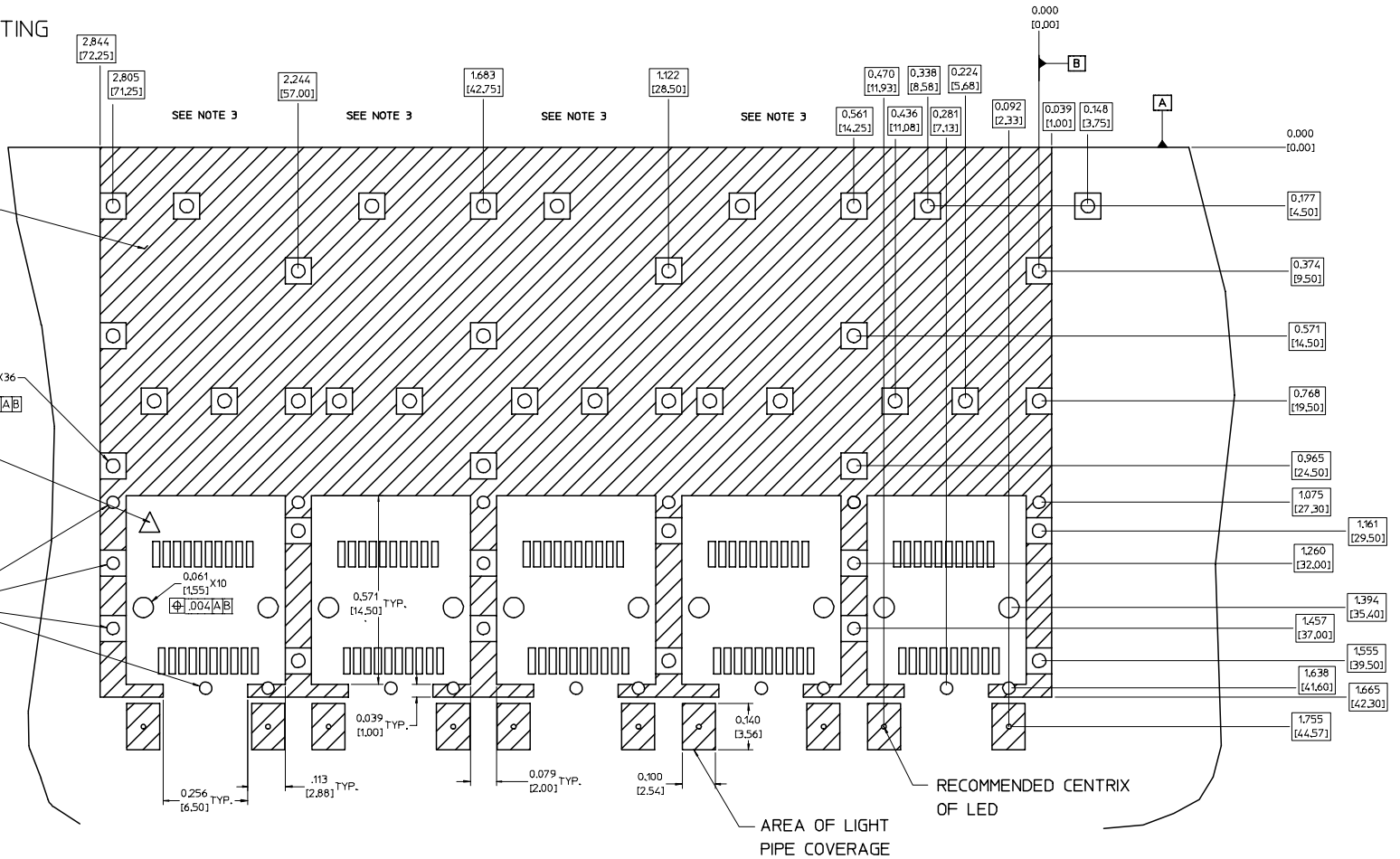
CROSS-HATCHED AREA DENOTES
COMPONENT AND TRACE KEEP-OUT
(EXCEPT CHASSIS GROUND)

THIS AREA DENOTES
COMPONENT KEEP-OUT
(TRACES ALLOWED)

SMALLER HOLE ON
THESE FOUR ROWS ONLY

NOTES:

1. PADS AND VIAS GO TO CHASSIS GROUND.
2. CAGE MOUNTING THRU HOLES (42 PLACES) TO BE PLATED.
3. HOLE PATTERN REPEATS FOR EACH PORT.
SPACING BETWEEN PORTS IS .561 (14.25).



ENTER DESCRIPTION EC NO: UST2006-0008 DRINKINS/ROBINSON 2005/07/15 CHKD:BRUSSELL 2005/07/15 APPR:BRUSSELL 2005/07/25	QUALITY SYMBOLS ▽=0 ▽=0	GENERAL TOLERANCES (UNLESS SPECIFIED) mm ± .13 INCH ± .01 ANGULAR ± 1°	DIMENSION STYLE IN/MM	SCALE 6:1	DESIGN UNITS METRIC	THIRD ANGLE PROJECTION
	DRAWN BY KS IMONSO	DATE 2004/07/08	CHECKED BY BRUSSELL	DATE 2004/07/08	TITLE 1X5 SFP LIGHT PIPE ASSEMBLY, BACK-TOP	
	APPROVED BY BRUSSELL	DATE 2004/07/08	MATERIAL NO. 747290001	DOCUMENT NO. SD-74729-001	MOLEX INCORPORATED	
	DRAFT WHERE APPLICABLE MUST REMAIN WITHIN DIMENSIONS	SIZE D	THIS DRAWING CONTAINS INFORMATION THAT IS PROPRIETARY TO MOLEX INCORPORATED AND SHOULD NOT BE USED WITHOUT WRITTEN PERMISSION			

SHEET NO.
3 OF 5

20 19 18 17 16 15 14 13 12 11 10 9 8 7 6 5 4 3 2 1

M

L

K

J

I

H

G

F

E

D

C

B

A

M

L

K

J

I

H

G

F

E

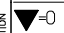
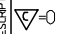


D

C

B

A

DATE	REV	CHANGES	COMMENTS
2004/07/08	A	INITIAL RELEASE	N/A
2005/06/03	B	CORRECTED P/N FOR DIALIGHT LED	DOCUMENT CHANGE ONLY
2005/06/10	C	UPDATED VIEWS TO SHOW CLEARANCE HOLES ADDED TO THE COVER	N/A

ENTER DESCRIPTION EC NO: UST2006-0008 DRAWN BY: JORWANKI MONSON 2005/07/15 CHECKED BY: CHFKBRUSSELL 2005/07/15 APPR: BRUSSELL 2005/07/25	QUALITY SYMBOLS  = 0  = 0	GENERAL TOLERANCES (UNLESS SPECIFIED)		DIMENSION STYLE IN/MM		SCALE 1:1	DESIGN UNITS METRIC	 THIRD ANGLE PROJECTION	
		4 PLACES ± --- ± --- 3 PLACES ± --- ± .005 2 PLACES ± 0.13 ± .01 1 PLACE ± 0.25 ± ---	mm INCH	DRAWN BY KS IMONSO	DATE 2004/07/08	TITLE 1X5 SFP LIGHT PIPE ASSEMBLY, BACK-TOP			
		ANGULAR ± 1 °		CHECKED BY BRUSSELL	DATE 2004/07/08	APPROVED BY BRUSSELL			DATE 2004/07/08
		DRAFT WHERE APPLICABLE MUST REMAIN WITHIN DIMENSIONS		MATERIAL NO. 747290001	DOCUMENT NO. SD-74729-001	 MOLEX INCORPORATED			SHEET NO. 5 OF 5

19 18 17 16 15 14 13 12 11 10 9 8 7 6 5 4 3 2 1