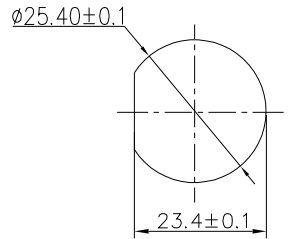
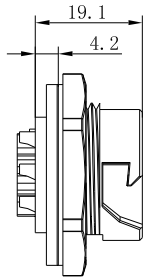


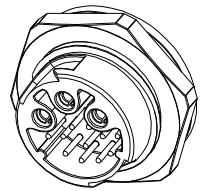
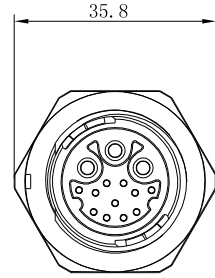
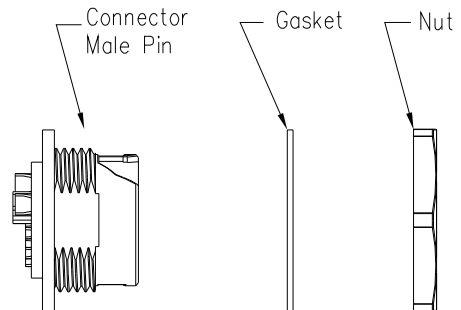
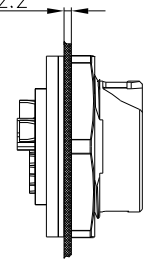
REV.	ECN NO.	DESCRIPTION	SIGN	DATE
C1	N/A	INITIAL DRAWING	Liu	2020/05/16



RECOMMENDED PANEL Cut-Out



Panel T: Max 2.2



- Specification:
- 1.Operation Temperature: -45°C~105°C.
 - 2.Insulation Resistance: 100MΩ at DC500V.
 - 3.Contact Resistance: <10mΩ.
 - 4.Withstand Voltage: 2000V AC
 - 5.Operating Current: 20+5A
 - 6.Operating Voltage: AC 300V
 - 7.Waterproof Rate: IP67 (Mated)
 - 8.Housing: Nylon, Black
 - 9.Male Pin: Copper Alloy, Gold Plated
 - 10.Female Pin: Copper Alloy, Gold Plated
 - 11.Gasket: Silicon Gray
 - 12.Panel Nut: Nylon, Blue
 - 13.Torque Rate: 0.8~1.0N • m
 - 14.RoHS Compliant.
 - 15.Mating Cap P/N: 806-00058-00

22XXX635-01

Pin Number

3+9 Pin	3+11 Pin
P/N: 24309635-01	P/N: 24311635-01
Pin Assignments Front View	

CHOGORI

UNIT:mm	DESCRIPTION	PART NO	DRAWN BY	DATE
TOLERANCE .X ±0.25 .XX ±0.15 .XXX ±0.05 ANGLES ±1°	Large Series Push Lock Female socket With Female Pin	24XXX635-01	Liu	2020/05/16
SCALE: 1:1	SHEET 1 OF 1	DWG NO	CHECKED BY	DATE
REV. C1	SIZE A4	CUSTOMER	Mo	2020/05/16
	* : Inspection Item		APPROVED BY	DATE
			Adley	2020/05/16

THIS INFORMATION IS CONFIDENTIAL AND IS DISCLOSED TO YOU ON CONDITION THAT NO FURTHER DISCLOSURE IS MADE BY YOU TO OTHER THAN CHOGORI PERSONNEL WITHOUT AUTHORIZATION FROM CHOGORI CORP.