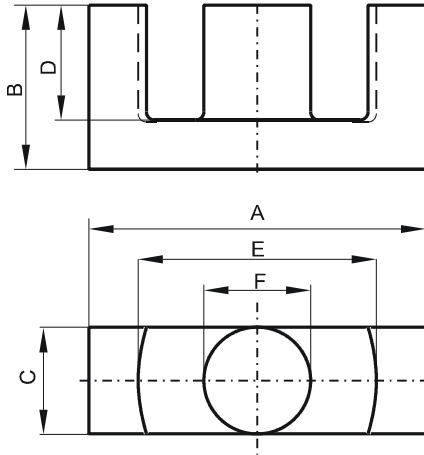


DIMENSIONS



(mm)	Nominal:	Tol. min.:	Tol. max.:
A	59.8	-1.3	+ 1.3
B	31.0	-0.2	+ 0.2
C	21.65	-0.45	+ 0.45
D	22.1 Min.		
E	44.7	-1.09	+ 1.09
F	21.65	-0.45	+ 0.45
Eff. Parameters			
Ae mm ²	Amin mm ²	le mm	Ve mm ³
368.0	360.0	139.0	51500

INDUCTANCE

AL value (nH/T ²)	Test conditions
7340 ± 25%	10 kHz, < 0.5 mT, 25 °C

MARKING

0T45959EC
PXXXXXXXXX

CORE LOSSES

P _i max	Test conditions
< 32.45 W/set (< 630 mW/cm ³)	100 kHz, 200 mT, 25 °C
< 30,0 W/set (< 600 mW/cm ³)	100 kHz, 200 mT, 100 °C

NOTE

Spec. modifications	Previous	Revised
2013-03-29		Issued
2013-07-22	Marking: 0T45959EC PXXXXX	Marking: 0T45959EC PXXXXXXXXX